

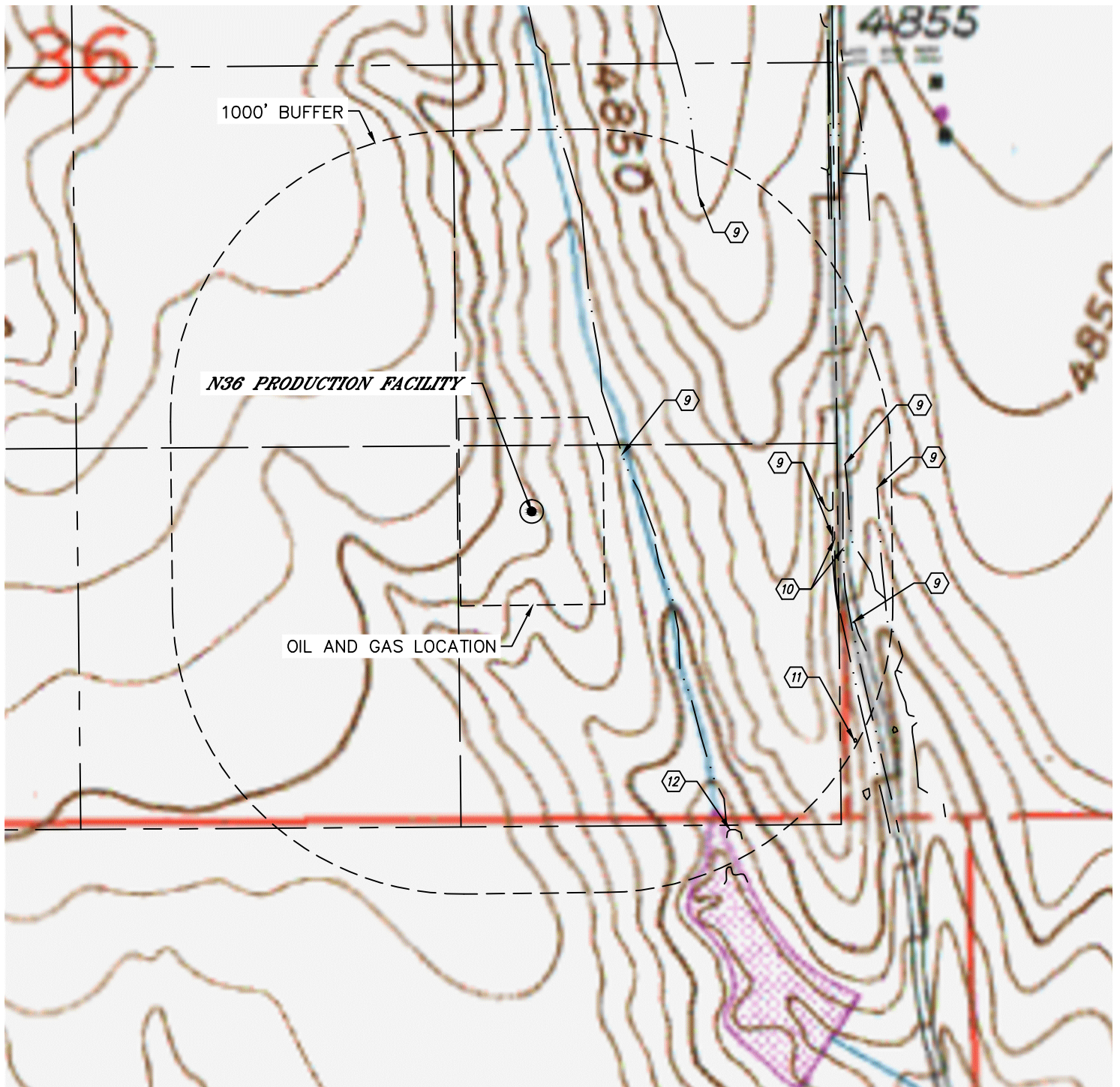


Lat40°, Inc. 6250 W. 10th Street, Unit 2, Greeley, CO 970-515-5294

# HYDROLOGY MAP

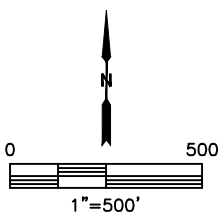
## N36 PRODUCTION FACILITY

SECTION: 36  
TOWNSHIP: 5N  
RANGE: 67W  
6TH. P.M.  
WELD COUNTY, CO



DISTANCES MEASURED FROM THE EDGE OF THE OIL AND GAS LOCATION.

- ⑨ DITCH 69' & 859' NE, 770', 793', 840' & 950' E, 864' SE
- ⑩ BORROW DITCH 800' & 829' E
- ⑪ LOW AREA 985' SE
- ⑫ POND 894' SE



DATE: 5/4/2016  
PROJECT#: 2016030