

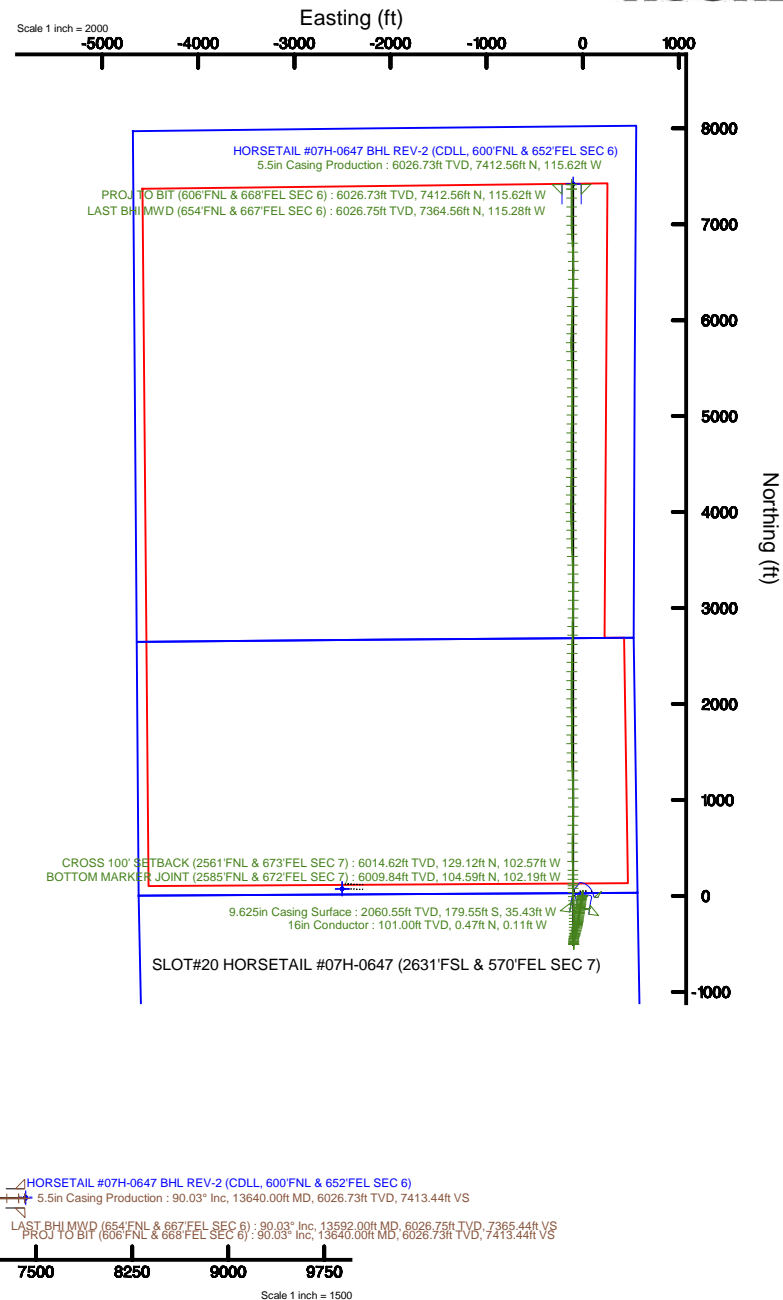
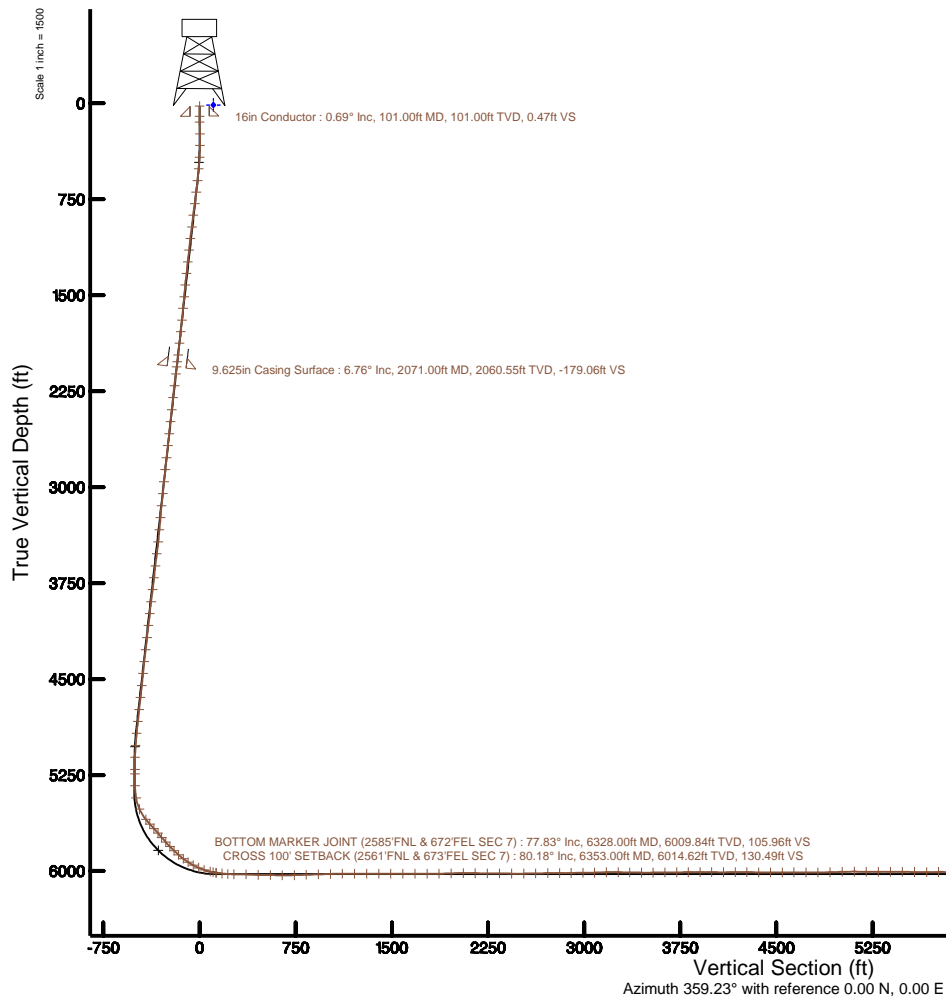
WHITING OIL & GAS CORPORATION

Location: COLORADO Slot: SLOT#20 HORSETAIL #07H-0647 (2631'FSL & 570'FEL SEC 7)
Field: WELD COUNTY Well: HORSETAIL #07H-0647
Facility: SEC.07-T10N-R57W Wellbore: HORSETAIL #07H-0647 PWB

Plot reference wellpath is HORSETAIL #07H-0647 REV-B.0 PWB	Grid System: NAD83 / Lambert Colorado SP, Northern Zone (501), US feet
True vertical depths are referenced to UNIT 406 (21) (RKB)	* - Wellpath was transformed from a different geodetic datum
Measured depths are referenced to UNIT 406 (21) (RKB)	North Reference: True north
UNIT 406 (21) (RKB) to Mean Sea Level: 4933 feet	Scale: True distance
Mean Sea Level to Mud line (At Slot: SLOT#20 HORSETAIL #07H-0647 (2631'FSL & 570'FEL SEC 7)): 0 feet	Depths are in feet
Coordinates are in feet referenced to Slot	Created by: wagnjam on 2016-07-18
	Database: WA_DEN_Denver_Defn

Location Information

Facility Name				Grid East (US ft)	Grid North (US ft)	Latitude	Longitude
SEC.07-T10N-R57W				3471270.155	1558347.593	40°51'13.010"N	103°47'46.990"W
Slot	Local N (ft)	Local E (ft)	Grid East (US ft)	Grid North (US ft)	Latitude	Longitude	
SLOT#20 HORSETAIL #07H-0647 (2631'FSL & 570'FEL SEC 7)	-73.75	2592.10	3473773.234	1558321.921	40°51'12.280"N	103°47'14.430"W	
UNIT 406 (21) (RKB) to Mud line (At Slot: SLOT#20 HORSETAIL #07H-0647 (2631'FSL & 570'FEL SEC 7))				4933ft			
Mean Sea Level to Mud line (At Slot: SLOT#20 HORSETAIL #07H-0647 (2631'FSL & 570'FEL SEC 7))				0ft			
UNIT 406 (21) (RKB) to Mean Sea Level				4933ft			





Actual Wellpath Report

HORSETAIL #07H-0647 AWP

Page 1 of 9



REFERENCE WELLPATH IDENTIFICATION

Operator	WHITING OIL & GAS CORPORATION	Slot	SLOT#20 HORSETAIL #07H-0647 (2631'FSL & 570'FEL SEC 7)
Area	COLORADO	Well	HORSETAIL #07H-0647
Field	WELD COUNTY	Wellbore	HORSETAIL #07H-0647 AWP
Facility	SEC.07-T10N-R57W		

REPORT SETUP INFORMATION

Projection System	NAD83 / Lambert Colorado SP, Northern Zone (501), US feet	Software System	WellArchitect® 5.0
North Reference	True	User	Wagnjam
Scale	1.000012	Report Generated	7/18/2016 at 10:55:28 AM
Convergence at slot	1.11° East	Database/Source file	WA_DEN_Denver_Defn/HORSETAIL_#07H-0647_AWP.xml

WELLPATH LOCATION

	Local coordinates		Grid coordinates		Geographic coordinates	
	North[ft]	East[ft]	Easting[US ft]	Northing[US ft]	Latitude	Longitude
Slot Location	-73.75	2502.10	3473773.23	1558321.92	40°51'12.280"N	103°47'14.430"W
Facility Reference Pt			3471270.16	1558347.59	40°51'13.010"N	103°47'46.990"W
Field Reference Pt			3471270.16	1558347.59	40°51'13.010"N	103°47'46.990"W

WELLPATH DATUM

Calculation method	Minimum curvature	UNIT 406 (21') (RKB) to Facility Vertical Datum	4933.00ft
Horizontal Reference Pt	Slot	UNIT 406 (21') (RKB) to Mean Sea Level	4933.00ft
Vertical Reference Pt	UNIT 406 (21') (RKB)	UNIT 406 (21') (RKB) to Mud Line at Slot (SLOT#20 HORSETAIL #07H-0647 (2631'FSL & 570'FEL SEC 7))	4933.00ft
MD Reference Pt	UNIT 406 (21') (RKB)	Section Origin	N 0.00, E 0.00 ft
Field Vertical Reference	Mean Sea Level	Section Azimuth	359.23°



Actual Wellpath Report

HORSETAIL #07H-0647 AWP
Page 2 of 9



REFERENCE WELLPATH IDENTIFICATION

Operator	WHITING OIL & GAS CORPORATION	Slot	SLOT#20 HORSETAIL #07H-0647 (2631'FSL & 570'FEL SEC 7)
Area	COLORADO	Well	HORSETAIL #07H-0647
Field	WELD COUNTY	Wellbore	HORSETAIL #07H-0647 AWB
Facility	SEC.07-T10N-R57W		

WELLPATH DATA (160 stations) † = interpolated/extrapolated station

MD [ft]	Inclination [°]	Azimuth [°]	TVD [ft]	Vert Sect [ft]	North [ft]	East [ft]	DLS [°/100ft]	Comments
0.00†	0.000	347.320	0.00	0.00	0.00	0.00	0.00	
21.00	0.000	347.320	21.00	0.00	0.00	0.00	0.00	
147.00	1.090	347.320	146.99	1.17	1.17	-0.26	0.87	
239.00	1.510	341.430	238.97	3.18	3.17	-0.84	0.48	
330.00	1.730	232.470	329.95	3.50	3.47	-2.31	2.90	
421.00	3.660	211.390	420.85	0.22	0.16	-4.92	2.35	
513.00	5.700	201.980	512.53	-6.48	-6.59	-8.15	2.36	
605.00	6.370	189.790	604.03	-15.71	-15.86	-10.73	1.57	
696.00	6.940	188.310	694.41	-26.10	-26.27	-12.39	0.65	
787.00	7.350	186.350	784.71	-37.31	-37.50	-13.82	0.52	
878.00	7.380	188.360	874.96	-48.85	-49.06	-15.32	0.29	
970.00	7.220	188.720	966.21	-60.39	-60.62	-17.05	0.18	
1061.00	6.740	188.920	1056.54	-71.29	-71.55	-18.75	0.53	
1152.00	6.540	187.720	1146.93	-81.68	-81.96	-20.27	0.27	
1244.00	6.430	186.430	1238.34	-91.97	-92.27	-21.55	0.20	
1335.00	6.200	187.770	1328.79	-101.89	-102.20	-22.79	0.30	
1427.00	5.790	186.790	1420.28	-111.40	-111.74	-24.01	0.46	
1519.00	5.290	189.730	1511.85	-120.17	-120.52	-25.27	0.62	
1610.00	5.220	189.550	1602.47	-128.37	-128.74	-26.67	0.08	
1702.00	6.060	191.640	1694.02	-137.23	-137.62	-28.34	0.94	
1794.00	6.120	192.530	1785.50	-146.75	-147.17	-30.39	0.12	
1885.00	6.640	189.830	1875.94	-156.64	-157.09	-32.34	0.66	
1976.00	7.320	187.950	1966.27	-167.54	-168.01	-34.04	0.79	
2031.00	6.970	186.170	2020.84	-174.32	-174.80	-34.88	0.75	
2125.00	6.490	188.300	2114.19	-185.22	-185.73	-36.26	0.58	
2219.00	6.700	188.210	2207.57	-195.89	-196.41	-37.81	0.22	
2313.00	6.490	189.040	2300.95	-206.54	-207.09	-39.43	0.25	
2407.00	6.580	188.250	2394.34	-217.09	-217.66	-41.04	0.14	
2502.00	6.130	186.940	2488.75	-227.49	-228.08	-42.43	0.50	
2596.00	6.290	187.730	2582.20	-237.56	-238.17	-43.73	0.19	



Actual Wellpath Report

HORSETAIL #07H-0647 AWP
Page 3 of 9



REFERENCE WELLPATH IDENTIFICATION

Operator	WHITING OIL & GAS CORPORATION	Slot	SLOT#20 HORSETAIL #07H-0647 (2631'FSL & 570'FEL SEC 7)
Area	COLORADO	Well	HORSETAIL #07H-0647
Field	WELD COUNTY	Wellbore	HORSETAIL #07H-0647 AWB
Facility	SEC.07-T10N-R57W		

WELLPATH DATA (160 stations)

MD [ft]	Inclination [°]	Azimuth [°]	TVD [ft]	Vert Sect [ft]	North [ft]	East [ft]	DLS [°/100ft]	Comments
2690.00	6.290	187.440	2675.64	-247.75	-248.38	-45.09	0.03	
2785.00	6.060	187.630	2770.08	-257.86	-258.51	-46.43	0.24	
2879.00	6.170	191.510	2863.55	-267.70	-268.38	-48.10	0.45	
2974.00	6.220	191.150	2957.99	-277.73	-278.43	-50.11	0.07	
3068.00	6.060	193.230	3051.46	-287.52	-288.25	-52.23	0.29	
3162.00	5.590	190.540	3144.97	-296.83	-297.58	-54.20	0.58	
3256.00	5.130	189.630	3238.56	-305.45	-306.23	-55.74	0.50	
3351.00	4.720	187.560	3333.21	-313.50	-314.29	-56.97	0.47	
3445.00	7.110	193.840	3426.70	-322.95	-323.78	-58.87	2.63	
3540.00	6.850	193.280	3521.00	-334.14	-335.00	-61.58	0.28	
3634.00	6.890	192.840	3614.32	-345.06	-345.95	-64.12	0.07	
3728.00	7.000	194.910	3707.63	-356.05	-356.98	-66.84	0.29	
3822.00	6.880	193.330	3800.94	-367.03	-368.00	-69.62	0.24	
3917.00	6.920	194.550	3895.26	-378.06	-379.07	-72.37	0.16	
4011.00	6.740	195.740	3988.59	-388.81	-389.86	-75.28	0.24	
4105.00	6.910	196.240	4081.92	-399.51	-400.60	-78.36	0.19	
4200.00	6.780	196.290	4176.25	-410.34	-411.47	-81.53	0.14	
4294.00	6.970	197.560	4269.57	-421.05	-422.23	-84.81	0.26	
4388.00	6.870	199.010	4362.89	-431.76	-432.99	-88.36	0.21	
4482.00	6.220	198.560	4456.27	-441.85	-443.13	-91.81	0.69	
4577.00	5.430	188.320	4550.78	-451.15	-452.46	-94.10	1.37	
4671.00	6.660	179.740	4644.26	-460.99	-462.31	-94.72	1.62	
4765.00	6.250	181.990	4737.67	-471.55	-472.87	-94.88	0.51	
4859.00	6.090	181.900	4831.12	-481.65	-482.97	-95.22	0.17	
4953.00	5.850	182.970	4924.61	-491.41	-492.74	-95.63	0.28	
5047.00	3.730	181.300	5018.28	-499.24	-500.58	-95.95	2.26	
5141.00	1.170	158.250	5112.18	-503.20	-504.53	-95.66	2.86	
5235.00	0.820	56.880	5206.18	-503.73	-505.05	-94.74	1.65	
5270.00	0.770	62.950	5241.17	-503.49	-504.81	-94.32	0.28	
5363.00	0.500	125.380	5334.17	-503.46	-504.76	-93.44	0.75	



Actual Wellpath Report

HORSETAIL #07H-0647 AWP

Page 4 of 9



REFERENCE WELLPATH IDENTIFICATION

Operator	WHITING OIL & GAS CORPORATION	Slot	SLOT#20 HORSETAIL #07H-0647 (2631'FSL & 570'FEL SEC 7)
Area	COLORADO	Well	HORSETAIL #07H-0647
Field	WELD COUNTY	Wellbore	HORSETAIL #07H-0647 AWB
Facility	SEC.07-T10N-R57W		

WELLPATH DATA (160 stations) † = interpolated/extrapolated station

MD [ft]	Inclination [°]	Azimuth [°]	TVD [ft]	Vert Sect [ft]	North [ft]	East [ft]	DLS [°/100ft]	Comments
5457.00	10.230	355.320	5427.68	-495.35	-496.66	-93.78	11.23	
5551.00	23.460	3.130	5517.46	-468.23	-469.53	-93.44	14.25	
5645.00	39.050	1.680	5597.57	-419.68	-420.95	-91.54	16.60	
5693.00	42.530	2.500	5633.91	-388.36	-389.62	-90.39	7.34	
5739.00	42.180	2.010	5667.90	-357.42	-358.65	-89.17	1.05	
5788.00	41.200	1.420	5704.49	-324.86	-326.07	-88.19	2.15	
5833.00	40.020	1.090	5738.65	-295.59	-296.79	-87.55	2.67	
5880.00	41.770	358.340	5774.18	-264.83	-266.03	-87.72	5.34	
5928.00	44.640	357.110	5809.17	-231.98	-233.20	-89.03	6.23	
5975.00	46.420	357.370	5842.09	-198.46	-199.70	-90.64	3.81	
6022.00	49.160	358.330	5873.67	-163.66	-164.92	-91.94	6.02	
6069.00	52.170	357.380	5903.45	-127.33	-128.59	-93.31	6.59	
6115.00	55.550	357.410	5930.58	-90.20	-91.49	-95.00	7.35	
6162.00	61.660	357.530	5955.05	-50.12	-51.43	-96.77	13.00	
6209.00	67.250	357.890	5975.31	-7.75	-9.07	-98.46	11.91	
6256.00	72.920	358.190	5991.31	36.41	35.07	-99.97	12.08	
6303.00	75.550	357.960	6004.08	81.63	80.27	-101.49	5.62	
6328.00†	77.831	358.726	6009.84	105.96	104.59	-102.19	9.60	BOTTOM MARKER JOINT (2585'FNL & 672'FEL SEC 7)
6350.00	79.840	359.390	6014.10	127.54	126.17	-102.54	9.60	
6353.00†	80.178	359.431	6014.62	130.49	129.12	-102.57	11.33	CROSS 100' SETBACK (2561'FNL & 673'FEL SEC 7)
6397.00	85.130	0.020	6020.24	174.12	172.75	-102.78	11.33	
6444.00	86.150	359.610	6023.81	220.98	219.61	-102.93	2.34	
6491.00	90.030	359.400	6025.38	267.94	266.58	-103.34	8.27	
6585.00	87.660	358.970	6027.27	361.92	360.54	-104.68	2.56	
6680.00	88.520	359.910	6030.44	456.86	455.48	-105.60	1.34	
6774.00	89.300	0.480	6032.23	550.83	549.46	-105.28	1.03	
6868.00	89.310	0.820	6033.37	644.79	643.45	-104.22	0.36	
6962.00	91.650	1.200	6032.58	738.74	737.42	-102.56	2.52	
7055.00	91.830	0.890	6029.76	831.65	830.37	-100.86	0.39	
7150.00	91.830	0.920	6026.72	926.56	925.31	-99.37	0.03	



Actual Wellpath Report

HORSETAIL #07H-0647 AWP

Page 5 of 9



REFERENCE WELLPATH IDENTIFICATION

Operator	WHITING OIL & GAS CORPORATION	Slot	SLOT#20 HORSETAIL #07H-0647 (2631'FSL & 570'FEL SEC 7)
Area	COLORADO	Well	HORSETAIL #07H-0647
Field	WELD COUNTY	Wellbore	HORSETAIL #07H-0647 AWB
Facility	SEC.07-T10N-R57W		

WELLPATH DATA (160 stations)

MD [ft]	Inclination [°]	Azimuth [°]	TVD [ft]	Vert Sect [ft]	North [ft]	East [ft]	DLS [°/100ft]	Comments
7244.00	92.480	359.060	6023.19	1020.48	1019.23	-99.38	2.09	
7338.00	90.070	358.840	6021.10	1114.45	1113.19	-101.10	2.57	
7432.00	89.850	357.870	6021.16	1208.44	1207.15	-103.80	1.06	
7527.00	89.910	357.720	6021.36	1303.41	1302.08	-107.46	0.17	
7621.00	90.350	357.600	6021.15	1397.37	1396.00	-111.29	0.49	
7715.00	89.610	359.520	6021.18	1491.36	1489.96	-113.66	2.19	
7810.00	90.440	359.390	6021.14	1586.36	1584.96	-114.56	0.88	
7903.00	89.240	0.570	6021.40	1679.35	1677.96	-114.59	1.81	
7998.00	89.940	359.890	6022.08	1774.33	1772.95	-114.21	1.03	
8092.00	91.120	359.990	6021.21	1868.31	1866.95	-114.31	1.26	
8186.00	92.360	359.150	6018.36	1962.27	1960.90	-115.02	1.59	
8280.00	89.800	359.380	6016.58	2056.24	2054.86	-116.22	2.73	
8374.00	89.150	0.380	6017.45	2150.23	2148.86	-116.42	1.27	
8469.00	90.040	0.690	6018.12	2245.20	2243.85	-115.53	0.99	
8563.00	89.120	0.800	6018.81	2339.17	2337.84	-114.31	0.99	
8658.00	89.090	0.840	6020.29	2434.12	2432.82	-112.95	0.05	
8752.00	90.840	1.410	6020.35	2528.06	2526.80	-111.10	1.96	
8846.00	91.030	1.260	6018.81	2621.99	2620.76	-108.91	0.26	
8941.00	91.150	1.120	6017.01	2716.91	2715.72	-106.94	0.19	
9032.00	90.100	0.770	6016.01	2807.87	2806.70	-105.44	1.22	
9123.00	90.530	1.870	6015.51	2898.80	2897.67	-103.34	1.30	
9215.00	90.750	1.250	6014.49	2990.72	2989.63	-100.84	0.72	
9306.00	91.490	0.890	6012.71	3081.65	3080.60	-99.14	0.90	
9398.00	91.650	0.280	6010.19	3173.59	3172.56	-98.20	0.69	
9489.00	88.620	358.960	6009.97	3264.58	3263.54	-98.81	3.63	
9580.00	89.050	358.060	6011.82	3355.55	3354.49	-101.17	1.10	
9672.00	89.760	358.230	6012.78	3447.53	3446.44	-104.15	0.79	
9762.00	90.320	357.340	6012.72	3537.50	3536.37	-107.63	1.17	
9854.00	91.370	357.440	6011.36	3629.44	3628.26	-111.82	1.15	
9946.00	89.980	359.170	6010.27	3721.42	3720.21	-114.54	2.41	



Actual Wellpath Report

HORSETAIL #07H-0647 AWP

Page 6 of 9



REFERENCE WELLPATH IDENTIFICATION

Operator	WHITING OIL & GAS CORPORATION	Slot	SLOT#20 HORSETAIL #07H-0647 (2631'FSL & 570'FEL SEC 7)
Area	COLORADO	Well	HORSETAIL #07H-0647
Field	WELD COUNTY	Wellbore	HORSETAIL #07H-0647 AWB
Facility	SEC.07-T10N-R57W		

WELLPATH DATA (160 stations)

MD [ft]	Inclination [°]	Azimuth [°]	TVD [ft]	Vert Sect [ft]	North [ft]	East [ft]	DLS [°/100ft]	Comments
10037.00	90.190	358.730	6010.14	3812.42	3811.20	-116.20	0.54	
10129.00	90.930	358.140	6009.24	3904.40	3903.16	-118.72	1.03	
10220.00	88.770	358.160	6009.48	3995.38	3994.10	-121.65	2.37	
10311.00	90.130	1.350	6010.35	4086.36	4085.09	-122.04	3.81	
10403.00	90.750	1.580	6009.65	4178.28	4177.05	-119.69	0.72	
10495.00	89.230	359.830	6009.66	4270.25	4269.04	-118.56	2.52	
10587.00	89.420	1.230	6010.75	4362.22	4361.03	-117.71	1.54	
10678.00	89.940	0.270	6011.25	4453.18	4452.02	-116.52	1.20	
10770.00	90.560	359.560	6010.85	4545.17	4544.01	-116.65	1.02	
10860.00	89.790	359.670	6010.58	4635.17	4634.01	-117.26	0.86	
10955.00	89.730	0.660	6010.98	4730.15	4729.01	-116.98	1.04	
11049.00	89.940	1.000	6011.25	4824.12	4823.00	-115.62	0.43	
11143.00	91.360	1.260	6010.18	4918.06	4916.97	-113.77	1.54	
11237.00	92.380	1.470	6007.11	5011.94	5010.89	-111.53	1.11	
11332.00	89.910	1.480	6005.21	5106.84	5105.83	-109.09	2.60	
11426.00	89.330	359.540	6005.84	5200.81	5199.82	-108.25	2.15	
11520.00	89.630	359.300	6006.69	5294.81	5293.82	-109.20	0.41	
11615.00	90.280	0.540	6006.77	5389.80	5388.81	-109.33	1.47	
11708.00	89.360	358.050	6007.06	5482.79	5481.80	-110.48	2.85	
11803.00	89.510	357.730	6007.99	5577.76	5576.73	-113.98	0.37	
11897.00	90.280	357.910	6008.17	5671.73	5670.66	-117.55	0.84	
11991.00	90.190	0.330	6007.78	5765.72	5764.64	-119.00	2.58	
12085.00	89.480	2.180	6008.05	5859.66	5858.61	-116.94	2.11	
12179.00	90.090	2.320	6008.40	5953.52	5952.54	-113.25	0.67	
12273.00	90.460	1.750	6007.95	6047.41	6046.48	-109.91	0.72	
12368.00	88.700	1.310	6008.65	6142.33	6141.44	-107.37	1.91	
12462.00	89.910	1.700	6009.79	6236.24	6235.40	-104.90	1.35	
12557.00	88.740	1.930	6010.91	6331.14	6330.34	-101.89	1.26	
12651.00	89.290	1.720	6012.53	6425.03	6424.28	-98.90	0.63	
12745.00	88.730	359.790	6014.15	6518.98	6518.25	-97.66	2.14	



Actual Wellpath Report

HORSETAIL #07H-0647 AWP
Page 7 of 9



REFERENCE WELLPATH IDENTIFICATION			
Operator	WHITING OIL & GAS CORPORATION	Slot	SLOT#20 HORSETAIL #07H-0647 (2631'FSL & 570'FEL SEC 7)
Area	COLORADO	Well	HORSETAIL #07H-0647
Field	WELD COUNTY	Wellbore	HORSETAIL #07H-0647 AWB
Facility	SEC.07-T10N-R57W		

WELLPATH DATA (160 stations)								
MD [ft]	Inclination [°]	Azimuth [°]	TVD [ft]	Vert Sect [ft]	North [ft]	East [ft]	DLS [°/100ft]	Comments
12840.00	89.320	358.710	6015.77	6613.96	6613.23	-98.91	1.30	
12935.00	90.060	357.890	6016.28	6708.94	6708.18	-101.72	1.16	
13029.00	90.890	356.180	6015.50	6802.87	6802.05	-106.59	2.02	
13123.00	89.500	356.720	6015.18	6896.75	6895.87	-112.41	1.59	
13217.00	88.080	358.190	6017.17	6990.68	6989.75	-116.58	2.17	
13311.00	87.320	0.930	6020.94	7084.60	7083.66	-117.30	3.02	
13405.00	88.330	0.470	6024.51	7178.50	7177.58	-116.15	1.18	
13498.00	89.440	0.510	6026.32	7271.45	7270.56	-115.36	1.19	
13592.00	90.030	359.590	6026.75	7365.44	7364.56	-115.28	1.16	LAST BHI MWD (654'FNL & 667'FEL SEC 6)
13640.00	90.030	359.590	6026.73	7413.44	7412.56	-115.62	0.00	PROJ TO BIT (606'FNL & 668'FEL SEC 6)

HOLE & CASING SECTIONS - Ref Wellbore: HORSETAIL #07H-0647 AWB Ref Wellpath: HORSETAIL #07H-0647 AWP									
String/Diameter	Start MD [ft]	End MD [ft]	Interval [ft]	Start TVD [ft]	End TVD [ft]	Start N/S [ft]	Start E/W [ft]	End N/S [ft]	End E/W [ft]
16in Conductor	21.00	101.00	80.00	21.00	101.00	0.00	0.00	0.47	-0.11
13.5in Open Hole	21.00	2085.00	2064.00	21.00	2074.46	0.00	0.00	-181.18	-35.64
9.625in Casing Surface	21.00	2071.00	2050.00	21.00	2060.55	0.00	0.00	-179.55	-35.43
8.5in Open Hole	2085.00	13640.00	11555.00	2074.46	6026.73	-181.18	-35.64	7412.56	-115.62
5.5in Casing Production	21.00	13640.00	13619.00	21.00	6026.73	0.00	0.00	7412.56	-115.62



Actual Wellpath Report

HORSETAIL #07H-0647 AWP

Page 8 of 9



REFERENCE WELLPATH IDENTIFICATION

Operator	WHITING OIL & GAS CORPORATION	Slot	SLOT#20 HORSETAIL #07H-0647 (2631'FSL & 570'FEL SEC 7)
Area	COLORADO	Well	HORSETAIL #07H-0647
Field	WELD COUNTY	Wellbore	HORSETAIL #07H-0647 AWB
Facility	SEC.07-T10N-R57W		

TARGETS

Name	TVD [ft]	North [ft]	East [ft]	Grid East [US ft]	Grid North [US ft]	Latitude	Longitude	Shape
SEC.06-T10N-R57W	13.00	74.01	-2502.09	3471270.16	1558347.59	40°51'13.010"N	103°47'46.990"W	polygon
SEC.07-T10N-R57W	13.00	74.01	-2502.09	3471270.16	1558347.59	40°51'13.010"N	103°47'46.990"W	polygon
HORSETAIL FED #07F NORTH HARDLINES 600'N, 100'S 1/2 SECTION, 300' E SEC 6, 100'W	5853.00	74.01	-2502.09	3471270.16	1558347.59	40°51'13.010"N	103°47'46.990"W	polygon
HORSETAIL #07H-0647 BHL REV-1 (CDLL, 600'FNL & 652'FEL SEC 6)	6017.00	7418.41	-99.87	3473530.11	1565737.09	40°52'25.580"N	103°47'15.730"W	point
HORSETAIL #07H-0647 BHL REV-2 (CDLL, 600'FNL & 652'FEL SEC 6)	6025.00	7418.41	-99.87	3473530.11	1565737.10	40°52'25.580"N	103°47'15.730"W	point

WELLPATH COMPOSITION - Ref Wellbore: HORSETAIL #07H-0647 AWB Ref Wellpath: HORSETAIL #07H-0647 AWP

Start MD [ft]	End MD [ft]	Positional Uncertainty Model	Log Name/Comment	Wellbore
21.00	2031.00	Custom BHI NaviTrak (IFR1, Standard Rotating, SAG) (Rockies 0.03Gt model)	BHI/INTEQ NAVITRAK MWD ROCKIES GT, SURCON IFR SAG 13 1/2"<147-2031>	HORSETAIL #07H-0647 AWB
2031.00	13592.00	Custom BHI NaviTrak (IFR1, Standard Rotating, SAG) (Rockies 0.03Gt model)	BHI/INTEQ NAVITRAK MWD ROCKIES GT, SURCON IFR SAG 8 1/2"<2125-13592>	HORSETAIL #07H-0647 AWB
13592.00	13640.00	Blind Drilling (std)	Projection to bit	HORSETAIL #07H-0647 AWB



Actual Wellpath Report
HORSETAIL #07H-0647 AWP
Page 9 of 9



REFERENCE WELLPATH IDENTIFICATION			
Operator	WHITING OIL & GAS CORPORATION	Slot	SLOT#20 HORSETAIL #07H-0647 (2631'FSL & 570'FEL SEC 7)
Area	COLORADO	Well	HORSETAIL #07H-0647
Field	WELD COUNTY	Wellbore	HORSETAIL #07H-0647 AWB
Facility	SEC.07-T10N-R57W		

WELLPATH COMMENTS				
MD [ft]	Inclination [°]	Azimuth [°]	TVD [ft]	Comment
6328.00	77.831	358.726	6009.84	BOTTOM MARKER JOINT (2585'FNL & 672'FEL SEC 7)
6353.00	80.178	359.431	6014.62	CROSS 100' SETBACK (2561'FNL & 673'FEL SEC 7)
13592.00	90.030	359.590	6026.75	LAST BHI MWD (654'FNL & 667'FEL SEC 6)
13640.00	90.030	359.590	6026.73	PROJ TO BIT (606'FNL & 668'FEL SEC 6)