

WHITING OIL & GAS CORPORATION

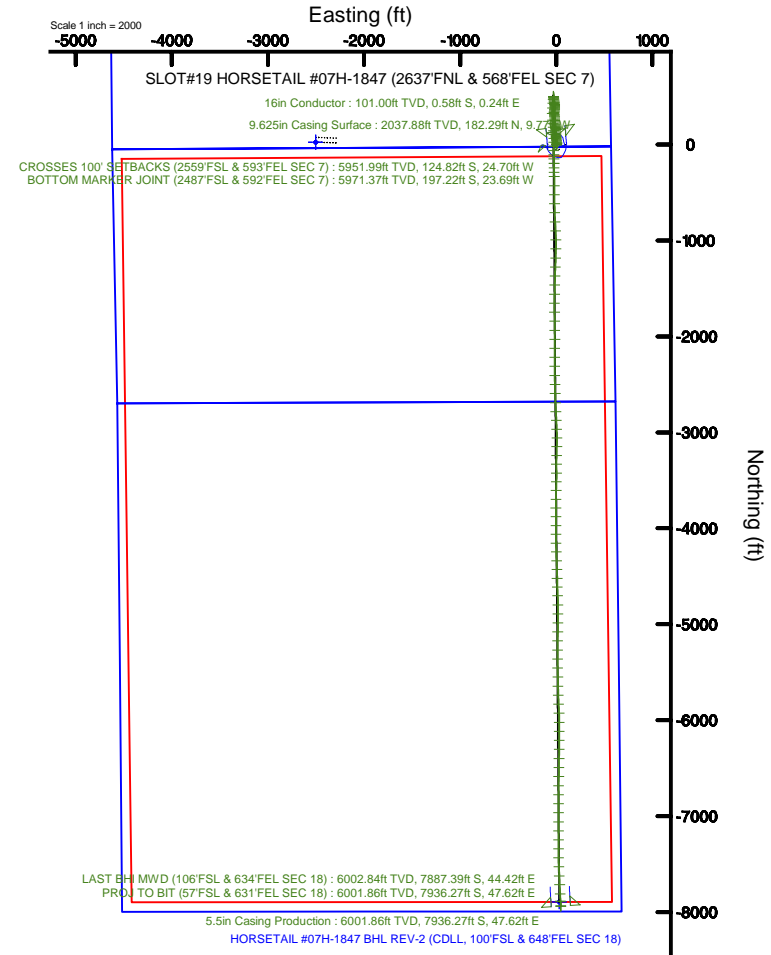
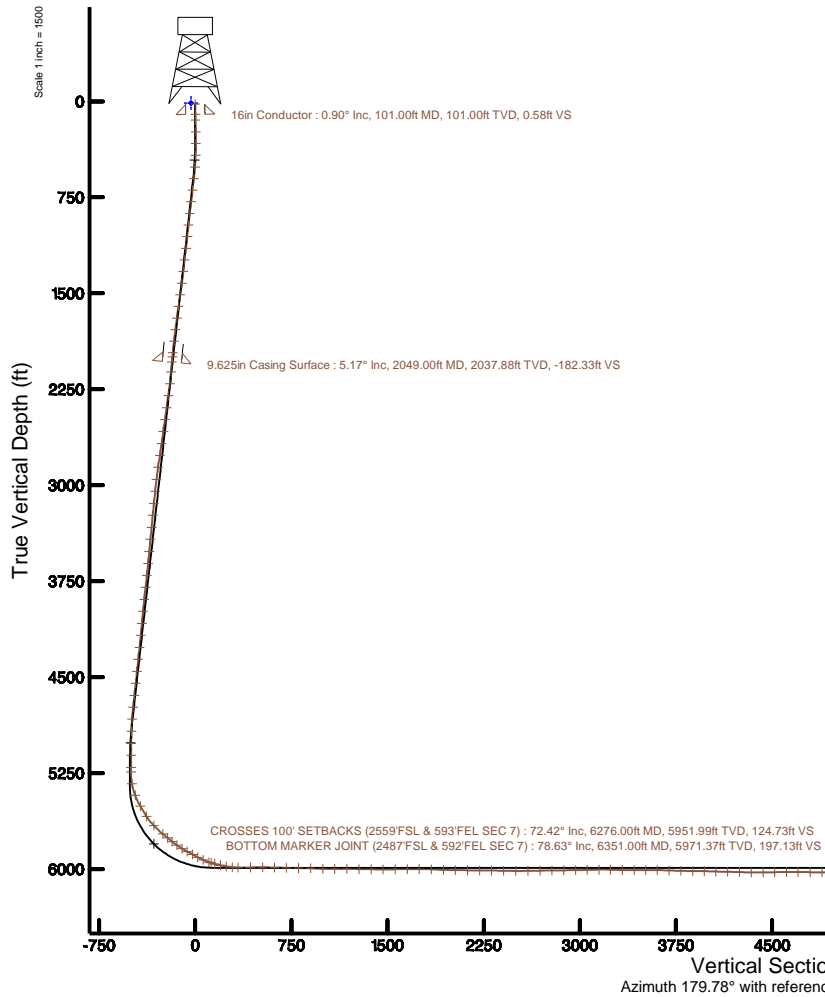
Location: COLORADO Slot: SLOT#19 HORSETAIL #07H-1847 (2637'FNL & 568'FEL SEC 7)
 Field: WELD COUNTY Well: HORSETAIL #07H-1847
 Facility: SEC.07-T10N-R57W Wellbore: HORSETAIL #07H-1847 PWB



Plot reference wellpath is HORSETAIL #07H-1847 REV-B.0 PWP	Grid System: NAD83 / Lambert Colorado SP, Northern Zone (501), US feet
True vertical depths are referenced to UNIT 406 (21) (RKB)	- Wellpath was transformed from a different geospatial datum
Measured depths are referenced to UNIT 406 (21) (RKB)	North Reference: True north
UNIT 406 (21) (RKB) to Mean Sea Level: 4933 feet	Scale: True distance
Mean Sea Level to Mud line (At Slot: SLOT#19 HORSETAIL #07H-1847 (2637'FNL & 568'FEL SEC 7)): 0 feet	Depths are in feet
Coordinates are in feet referenced to Slot	Created by: wagnjam on 2016-07-19
	Database: WA_DEN_Denver_Defn

Location Information

Facility Name		Grid East (US ft)	Grid North (US ft)	Latitude	Longitude		
SEC.07-T10N-R57W		3471270.155	1558347.593	40°5'13.010"N	103°47'46.990"W		
Slot		Local N (ft)	Local E (ft)	Grid East (US ft)	Grid North (US ft)	Latitude	Longitude
SLOT#19 HORSETAIL #07H-1847 (2637'FNL & 568'FEL SEC 7)		-23.15	2593.63	3473773.793	1558372.545	40°5'12.780"N	103°47'44.410"W
UNIT 406 (21) (RKB) to Mud line (At Slot: SLOT#19 HORSETAIL #07H-1847 (2637'FNL & 568'FEL SEC 7))						4933ft	
Mean Sea Level to Mud line (At Slot: SLOT#19 HORSETAIL #07H-1847 (2637'FNL & 568'FEL SEC 7))						0ft	
UNIT 406 (21) (RKB) to Mean Sea Level						4933ft	



HORSETAIL #07H-1847 BHL REV-2 (CDLL, 100'FSL & 648'FEL SEC 18)
 5.5in Casing Production: 91.14° Inc, 14095.00ft MD, 6001.86ft TVD, 7936.40ft VS
 LAST BHI MWD (106'FSL & 634'FEL SEC 18): 91.14° Inc, 14046.00ft MD, 6002.84ft TVD, 7887.50ft VS
 PROJ TO BIT (57'FSL & 631'FEL SEC 18): 91.14° Inc, 14095.00ft MD, 6001.86ft TVD, 7936.40ft VS

Scale 1 inch = 1500



Actual Wellpath Report

HORSETAIL #07H-1847 AWP

Page 1 of 9



REFERENCE WELLPATH IDENTIFICATION

Operator	WHITING OIL & GAS CORPORATION	Slot	SLOT#19 HORSETAIL #07H-1847 (2637'FNL & 568'FEL SEC 7)
Area	COLORADO	Well	HORSETAIL #07H-1847
Field	WELD COUNTY	Wellbore	HORSETAIL #07H-1847 AWB
Facility	SEC.07-T10N-R57W		

REPORT SETUP INFORMATION

Projection System	NAD83 / Lambert Colorado SP, Northern Zone (501), US feet	Software System	WellArchitect® 5.0
North Reference	True	User	Wagnjam
Scale	1.000012	Report Generated	7/19/2016 at 4:25:28 PM
Convergence at slot	1.11° East	Database/Source file	WA_DEN_Denver_Defn/HORSETAIL_#07H-1847_AWP.xml

WELLPATH LOCATION

	Local coordinates		Grid coordinates		Geographic coordinates	
	North[ft]	East[ft]	Easting[US ft]	Northing[US ft]	Latitude	Longitude
Slot Location	-23.15	2503.63	3473773.79	1558372.55	40°51'12.780"N	103°47'14.410"W
Facility Reference Pt			3471270.16	1558347.59	40°51'13.010"N	103°47'46.990"W
Field Reference Pt			3471270.16	1558347.59	40°51'13.010"N	103°47'46.990"W

WELLPATH DATUM

Calculation method	Minimum curvature	UNIT 406 (21') (RKB) to Facility Vertical Datum	4933.00ft
Horizontal Reference Pt	Slot	UNIT 406 (21') (RKB) to Mean Sea Level	4933.00ft
Vertical Reference Pt	UNIT 406 (21') (RKB)	UNIT 406 (21') (RKB) to Mud Line at Slot (SLOT#19 HORSETAIL #07H-1847 (2637'FNL & 568'FEL SEC 7))	4933.00ft
MD Reference Pt	UNIT 406 (21') (RKB)	Section Origin	N 0.00, E 0.00 ft
Field Vertical Reference	Mean Sea Level	Section Azimuth	179.78°



Actual Wellpath Report

HORSETAIL #07H-1847 AWP

Page 2 of 9



REFERENCE WELLPATH IDENTIFICATION

Operator	WHITING OIL & GAS CORPORATION	Slot	SLOT#19 HORSETAIL #07H-1847 (2637'FNL & 568'FEL SEC 7)
Area	COLORADO	Well	HORSETAIL #07H-1847
Field	WELD COUNTY	Wellbore	HORSETAIL #07H-1847 AWB
Facility	SEC.07-T10N-R57W		

WELLPATH DATA (163 stations) † = interpolated/extrapolated station

MD [ft]	Inclination [°]	Azimuth [°]	TVD [ft]	Vert Sect [ft]	North [ft]	East [ft]	DLS [°/100ft]	Comments
0.00†	0.000	157.850	0.00	0.00	0.00	0.00	0.00	
21.00	0.000	157.850	21.00	0.00	0.00	0.00	0.00	
147.00	1.420	157.850	146.99	1.45	-1.45	0.59	1.13	
239.00	1.720	159.540	238.95	3.80	-3.80	1.50	0.33	
330.00	0.920	73.460	329.93	4.88	-4.87	2.68	2.08	
421.00	2.360	23.360	420.90	2.95	-2.94	4.12	2.09	
513.00	4.330	7.470	512.74	-2.22	2.24	5.32	2.35	
605.00	6.450	356.530	604.33	-10.83	10.85	5.46	2.55	
696.00	6.920	355.960	694.71	-21.40	21.42	4.77	0.52	
787.00	6.660	350.970	785.07	-32.08	32.10	3.55	0.71	
878.00	6.520	352.940	875.47	-42.43	42.44	2.09	0.29	
970.00	6.230	352.830	966.90	-52.57	52.57	0.83	0.32	
1061.00	5.890	351.470	1057.39	-62.09	62.09	-0.48	0.41	
1152.00	6.770	353.280	1147.84	-72.04	72.03	-1.80	0.99	
1244.00	6.630	355.390	1239.21	-82.72	82.71	-2.87	0.31	
1335.00	6.180	356.260	1329.64	-92.85	92.84	-3.61	0.51	
1427.00	8.200	358.590	1420.91	-104.35	104.34	-4.09	2.22	
1519.00	8.140	358.810	1511.98	-117.43	117.41	-4.39	0.07	
1610.00	7.960	357.820	1602.08	-130.16	130.15	-4.76	0.25	
1702.00	8.010	356.260	1693.19	-142.93	142.91	-5.42	0.24	
1794.00	7.320	354.430	1784.37	-155.16	155.14	-6.41	0.80	
1885.00	6.610	352.770	1874.70	-166.13	166.10	-7.63	0.81	
1976.00	5.500	352.530	1965.19	-175.66	175.62	-8.86	1.22	
2007.00	5.270	352.290	1996.05	-178.54	178.51	-9.24	0.75	
2125.00	5.000	350.550	2113.58	-188.99	188.95	-10.81	0.26	
2219.00	6.880	347.590	2207.07	-198.54	198.49	-12.70	2.03	
2313.00	7.800	356.160	2300.30	-210.41	210.35	-14.33	1.52	
2407.00	7.830	356.800	2393.43	-223.17	223.11	-15.12	0.10	
2501.00	8.010	357.100	2486.53	-236.11	236.05	-15.81	0.20	
2596.00	8.110	357.990	2580.59	-249.42	249.35	-16.38	0.17	



Actual Wellpath Report

HORSETAIL #07H-1847 AWP

Page 3 of 9



REFERENCE WELLPATH IDENTIFICATION

Operator	WHITING OIL & GAS CORPORATION	Slot	SLOT#19 HORSETAIL #07H-1847 (2637'FNL & 568'FEL SEC 7)
Area	COLORADO	Well	HORSETAIL #07H-1847
Field	WELD COUNTY	Wellbore	HORSETAIL #07H-1847 AWB
Facility	SEC.07-T10N-R57W		

WELLPATH DATA (163 stations)

MD [ft]	Inclination [°]	Azimuth [°]	TVD [ft]	Vert Sect [ft]	North [ft]	East [ft]	DLS [°/100ft]	Comments
2690.00	8.230	358.930	2673.64	-262.77	262.71	-16.73	0.19	
2784.00	8.200	356.670	2766.67	-276.19	276.13	-17.25	0.34	
2879.00	8.240	356.770	2860.70	-289.75	289.69	-18.03	0.04	
2973.00	6.930	351.160	2953.87	-302.09	302.02	-19.28	1.60	
3067.00	5.870	351.370	3047.29	-312.45	312.37	-20.87	1.13	
3162.00	6.070	351.960	3141.77	-322.23	322.15	-22.30	0.22	
3256.00	5.580	4.520	3235.29	-331.71	331.63	-22.64	1.45	
3351.00	5.630	4.870	3329.84	-340.96	340.87	-21.88	0.06	
3445.00	5.490	7.570	3423.39	-350.00	349.92	-20.89	0.32	
3539.00	5.510	8.480	3516.96	-358.92	358.85	-19.63	0.10	
3634.00	5.730	9.640	3611.50	-368.10	368.03	-18.17	0.26	
3728.00	6.180	359.180	3705.00	-377.78	377.72	-17.45	1.25	
3822.00	6.180	359.740	3798.45	-387.90	387.84	-17.55	0.06	
3916.00	6.290	2.870	3891.90	-398.10	398.04	-17.32	0.38	
4011.00	5.250	353.280	3986.42	-407.62	407.55	-17.56	1.49	
4105.00	5.490	353.850	4080.01	-416.36	416.30	-18.55	0.26	
4199.00	5.710	354.130	4173.56	-425.49	425.42	-19.51	0.24	
4294.00	5.880	354.860	4268.07	-435.04	434.97	-20.43	0.20	
4388.00	5.930	354.160	4361.57	-444.67	444.59	-21.35	0.09	
4482.00	6.210	351.810	4455.05	-454.54	454.45	-22.57	0.40	
4576.00	6.310	352.180	4548.48	-464.69	464.60	-24.00	0.11	
4671.00	6.340	353.200	4642.91	-475.08	474.98	-25.33	0.12	
4764.00	6.050	354.670	4735.36	-485.06	484.96	-26.39	0.36	
4858.00	4.320	340.060	4828.98	-493.33	493.22	-28.06	2.30	
4952.00	1.190	352.960	4922.86	-497.63	497.52	-29.39	3.37	
5047.00	0.990	6.450	5017.84	-499.43	499.32	-29.42	0.34	
5141.00	0.520	16.950	5111.83	-500.64	500.53	-29.20	0.52	
5235.00	0.370	46.550	5205.83	-501.26	501.15	-28.86	0.29	
5269.00	0.170	151.010	5239.83	-501.29	501.18	-28.75	1.31	
5363.00	9.330	181.180	5333.41	-493.53	493.42	-28.84	9.77	



Actual Wellpath Report

HORSETAIL #07H-1847 AWP

Page 4 of 9



REFERENCE WELLPATH IDENTIFICATION

Operator	WHITING OIL & GAS CORPORATION	Slot	SLOT#19 HORSETAIL #07H-1847 (2637'FNL & 568'FEL SEC 7)
Area	COLORADO	Well	HORSETAIL #07H-1847
Field	WELD COUNTY	Wellbore	HORSETAIL #07H-1847 AWB
Facility	SEC.07-T10N-R57W		

WELLPATH DATA (163 stations) † = interpolated/extrapolated station

MD [ft]	Inclination [°]	Azimuth [°]	TVD [ft]	Vert Sect [ft]	North [ft]	East [ft]	DLS ["/100ft]	Comments
5457.00	21.530	186.480	5423.85	-468.69	468.57	-30.95	13.05	
5551.00	29.220	186.490	5508.72	-428.71	428.58	-35.50	8.18	
5645.00	33.310	184.520	5589.06	-380.18	380.03	-40.13	4.48	
5738.00	44.140	178.690	5661.53	-322.16	322.00	-41.41	12.28	
5833.00	50.350	175.800	5725.99	-252.53	252.38	-37.97	6.91	
5880.00	51.230	174.760	5755.71	-216.22	216.09	-34.97	2.54	
5927.00	51.120	174.120	5785.17	-179.77	179.65	-31.42	1.09	
5974.00	54.290	174.680	5813.65	-142.55	142.44	-27.78	6.81	
6022.00	58.630	177.960	5840.17	-102.63	102.53	-25.24	10.68	
6069.00	60.950	180.620	5863.82	-62.02	61.93	-24.75	6.95	
6115.00	60.990	180.740	5886.14	-21.81	21.71	-25.22	0.24	
6162.00	62.330	180.010	5908.45	19.56	-19.66	-25.49	3.16	
6209.00	66.180	179.500	5928.86	61.88	-61.98	-25.31	8.25	
6256.00	71.550	179.450	5945.80	105.71	-105.80	-24.91	11.43	
6276.00†	72.422	179.313	5951.99	124.73	-124.82	-24.70	4.41	CROSSES 100' SETBACKS (2559'FSL & 593'FEL SEC 7)
6303.00	73.600	179.130	5959.88	150.55	-150.64	-24.35	4.41	
6350.00	78.580	179.230	5971.17	196.15	-196.24	-23.70	10.60	
6351.00†	78.627	179.219	5971.37	197.13	-197.22	-23.69	4.85	BOTTOM MARKER JOINT (2487'FSL & 592'FEL SEC 7)
6397.00	80.810	178.740	5979.58	242.38	-242.48	-22.88	4.85	
6444.00	85.250	178.940	5985.28	289.02	-289.11	-21.94	9.46	
6490.00	88.640	179.120	5987.73	334.94	-335.03	-21.16	7.38	
6585.00	91.620	179.140	5987.52	429.93	-430.01	-19.72	3.14	
6680.00	89.590	179.750	5986.51	524.91	-524.99	-18.80	2.23	
6773.00	88.390	179.590	5988.15	617.90	-617.97	-18.26	1.30	
6867.00	88.610	178.080	5990.61	711.85	-711.92	-16.35	1.62	
6961.00	89.530	176.850	5992.14	805.76	-805.81	-12.19	1.63	
7055.00	87.650	177.590	5994.45	899.63	-899.67	-7.63	2.15	
7150.00	87.960	178.610	5998.09	994.52	-994.54	-4.49	1.12	
7244.00	90.300	181.300	5999.52	1088.49	-1088.52	-4.41	3.79	
7338.00	90.060	181.390	5999.22	1182.46	-1182.49	-6.62	0.27	



Actual Wellpath Report

HORSETAIL #07H-1847 AWP

Page 5 of 9



REFERENCE WELLPATH IDENTIFICATION

Operator	WHITING OIL & GAS CORPORATION	Slot	SLOT#19 HORSETAIL #07H-1847 (2637'FNL & 568'FEL SEC 7)
Area	COLORADO	Well	HORSETAIL #07H-1847
Field	WELD COUNTY	Wellbore	HORSETAIL #07H-1847 AWB
Facility	SEC.07-T10N-R57W		

WELLPATH DATA (163 stations)

MD [ft]	Inclination [°]	Azimuth [°]	TVD [ft]	Vert Sect [ft]	North [ft]	East [ft]	DLS [°/100ft]	Comments
7432.00	88.640	182.340	6000.29	1276.39	-1276.43	-9.68	1.82	
7527.00	89.170	181.850	6002.10	1371.29	-1371.35	-13.15	0.76	
7621.00	89.810	181.350	6002.94	1465.24	-1465.31	-15.78	0.86	
7715.00	91.050	181.400	6002.24	1559.20	-1559.28	-18.03	1.32	
7809.00	91.110	180.060	6000.46	1653.16	-1653.25	-19.23	1.43	
7903.00	89.290	179.130	6000.14	1747.16	-1747.24	-18.56	2.17	
7997.00	87.320	179.170	6002.92	1841.11	-1841.19	-17.17	2.10	
8092.00	88.670	179.050	6006.24	1936.04	-1936.12	-15.70	1.43	
8186.00	88.550	180.210	6008.52	2030.01	-2030.08	-15.09	1.24	
8280.00	89.750	180.780	6009.91	2123.99	-2124.07	-15.90	1.41	
8374.00	88.920	180.250	6011.01	2217.98	-2218.06	-16.75	1.05	
8468.00	89.790	179.950	6012.06	2311.97	-2312.05	-16.91	0.98	
8563.00	88.460	178.990	6013.51	2406.95	-2407.03	-16.03	1.73	
8658.00	89.820	178.810	6014.94	2501.93	-2502.00	-14.21	1.44	
8752.00	90.710	178.150	6014.51	2595.90	-2595.97	-11.72	1.18	
8846.00	91.600	177.810	6012.61	2689.83	-2689.89	-8.40	1.01	
8940.00	90.310	177.270	6011.04	2783.75	-2783.79	-4.37	1.49	
9032.00	90.800	177.170	6010.15	2875.65	-2875.67	0.09	0.54	
9123.00	90.770	177.350	6008.91	2966.55	-2966.56	4.44	0.20	
9214.00	91.760	180.100	6006.90	3057.51	-3057.51	6.47	3.21	
9306.00	91.050	181.570	6004.64	3149.46	-3149.47	5.13	1.77	
9397.00	88.460	181.520	6005.03	3240.41	-3240.42	2.67	2.85	
9489.00	88.250	179.910	6007.67	3332.36	-3332.38	1.53	1.76	
9580.00	89.510	179.200	6009.45	3423.34	-3423.35	2.23	1.59	
9671.00	91.270	181.940	6008.83	3514.31	-3514.33	1.33	3.58	
9762.00	89.080	181.700	6008.55	3605.25	-3605.28	-1.56	2.42	
9854.00	87.970	180.970	6010.92	3697.18	-3697.22	-3.70	1.44	
9945.00	88.430	179.820	6013.78	3788.13	-3788.18	-4.33	1.36	
10037.00	89.320	179.170	6015.59	3880.11	-3880.15	-3.52	1.20	
10129.00	88.800	180.760	6017.10	3972.09	-3972.14	-3.46	1.82	



Actual Wellpath Report

HORSETAIL #07H-1847 AWP

Page 6 of 9



REFERENCE WELLPATH IDENTIFICATION

Operator	WHITING OIL & GAS CORPORATION	Slot	SLOT#19 HORSETAIL #07H-1847 (2637'FNL & 568'FEL SEC 7)
Area	COLORADO	Well	HORSETAIL #07H-1847
Field	WELD COUNTY	Wellbore	HORSETAIL #07H-1847 AWB
Facility	SEC.07-T10N-R57W		

WELLPATH DATA (163 stations)

MD [ft]	Inclination [°]	Azimuth [°]	TVD [ft]	Vert Sect [ft]	North [ft]	East [ft]	DLS [°/100ft]	Comments
10219.00	87.940	179.590	6019.66	4062.05	-4062.10	-3.74	1.61	
10311.00	89.320	178.620	6021.85	4154.02	-4154.06	-2.30	1.83	
10403.00	88.250	178.570	6023.81	4245.97	-4246.01	-0.05	1.16	
10495.00	88.980	177.750	6026.03	4337.91	-4337.93	2.91	1.19	
10587.00	90.130	177.980	6026.74	4429.85	-4429.86	6.33	1.27	
10678.00	91.820	178.700	6025.20	4520.81	-4520.81	8.97	2.02	
10769.00	90.650	178.390	6023.23	4611.76	-4611.76	11.28	1.33	
10860.00	89.200	177.380	6023.35	4702.71	-4702.69	14.64	1.94	
10955.00	88.920	180.330	6024.91	4797.68	-4797.65	16.54	3.12	
11048.00	89.630	179.630	6026.09	4890.67	-4890.64	16.57	1.07	
11143.00	89.850	180.550	6026.52	4985.66	-4985.64	16.42	1.00	
11237.00	89.540	180.820	6027.02	5079.65	-5079.63	15.29	0.44	
11331.00	89.660	180.950	6027.68	5173.63	-5173.62	13.84	0.19	
11425.00	90.830	179.910	6027.27	5267.62	-5267.61	13.14	1.67	
11520.00	90.340	180.010	6026.30	5362.61	-5362.60	13.20	0.53	
11614.00	92.220	179.300	6024.20	5456.59	-5456.57	13.77	2.14	
11708.00	90.800	178.320	6021.73	5550.54	-5550.52	15.72	1.84	
11803.00	90.190	179.020	6020.91	5645.51	-5645.49	17.93	0.98	
11896.00	90.310	177.920	6020.50	5738.49	-5738.45	20.41	1.19	
11990.00	91.170	177.270	6019.29	5832.41	-5832.36	24.35	1.15	
12085.00	89.600	177.750	6018.65	5927.33	-5927.26	28.48	1.73	
12179.00	90.190	180.080	6018.82	6021.31	-6021.24	30.26	2.56	
12273.00	90.490	179.220	6018.26	6115.31	-6115.24	30.83	0.97	
12368.00	90.280	181.060	6017.63	6210.30	-6210.23	30.60	1.95	
12462.00	89.970	180.580	6017.42	6304.29	-6304.22	29.26	0.61	
12557.00	90.710	180.710	6016.86	6399.27	-6399.21	28.19	0.79	
12651.00	90.770	180.770	6015.64	6493.25	-6493.20	26.97	0.09	
12745.00	90.900	181.290	6014.27	6587.22	-6587.17	25.28	0.57	
12840.00	90.680	180.530	6012.96	6682.19	-6682.15	23.78	0.83	
12934.00	90.530	180.250	6011.97	6776.18	-6776.14	23.14	0.34	



Actual Wellpath Report

HORSETAIL #07H-1847 AWP

Page 7 of 9



REFERENCE WELLPATH IDENTIFICATION

Operator	WHITING OIL & GAS CORPORATION	Slot	SLOT#19 HORSETAIL #07H-1847 (2637'FNL & 568'FEL SEC 7)
Area	COLORADO	Well	HORSETAIL #07H-1847
Field	WELD COUNTY	Wellbore	HORSETAIL #07H-1847 AWB
Facility	SEC.07-T10N-R57W		

WELLPATH DATA (163 stations)

MD [ft]	Inclination [°]	Azimuth [°]	TVD [ft]	Vert Sect [ft]	North [ft]	East [ft]	DLS [°/100ft]	Comments
13028.00	90.310	179.550	6011.28	6870.18	-6870.14	23.30	0.78	
13122.00	90.890	180.610	6010.30	6964.17	-6964.13	23.17	1.29	
13217.00	92.340	179.960	6007.62	7059.12	-7059.09	22.70	1.67	
13311.00	91.540	179.850	6004.44	7153.07	-7153.03	22.85	0.86	
13405.00	90.460	180.070	6002.80	7247.05	-7247.02	22.92	1.17	
13499.00	88.710	180.340	6003.48	7341.04	-7341.01	22.58	1.88	
13592.00	87.780	178.500	6006.33	7433.99	-7433.96	23.52	2.22	
13686.00	90.220	177.630	6007.97	7527.93	-7527.88	26.69	2.76	
13780.00	91.730	177.450	6006.37	7621.84	-7621.78	30.73	1.62	
13873.00	90.220	177.550	6004.78	7714.75	-7714.67	34.78	1.63	
13967.00	90.650	176.650	6004.07	7808.64	-7808.55	39.54	1.06	
14046.00	91.140	176.260	6002.84	7887.50	-7887.39	44.42	0.79	LAST BHI MWD (106'FSL & 634'FEL SEC 18)
14095.00	91.140	176.260	6001.86	7936.40	-7936.27	47.62	0.00	PROJ TO BIT (57'FSL & 631'FEL SEC 18)

HOLE & CASING SECTIONS - Ref Wellbore: HORSETAIL #07H-1847 AWB Ref Wellpath: HORSETAIL #07H-1847 AWP

String/Diameter	Start MD [ft]	End MD [ft]	Interval [ft]	Start TVD [ft]	End TVD [ft]	Start N/S [ft]	Start E/W [ft]	End N/S [ft]	End E/W [ft]
16in Conductor	21.00	101.00	80.00	21.00	101.00	0.00	0.00	-0.58	0.24
13.5in Open Hole	21.00	2060.00	2039.00	21.00	2048.83	0.00	0.00	183.27	-9.92
9.625in Casing Surface	21.00	2049.00	2028.00	21.00	2037.88	0.00	0.00	182.29	-9.77
8.5in Open Hole	2060.00	14095.00	12035.00	2048.83	6001.86	183.27	-9.92	-7936.27	47.62
5.5in Casing Production	21.00	14095.00	14074.00	21.00	6001.86	0.00	0.00	-7936.27	47.62



Actual Wellpath Report

HORSETAIL #07H-1847 AWP

Page 8 of 9



REFERENCE WELLPATH IDENTIFICATION			
Operator	WHITING OIL & GAS CORPORATION	Slot	SLOT#19 HORSETAIL #07H-1847 (2637'FNL & 568'FEL SEC 7)
Area	COLORADO	Well	HORSETAIL #07H-1847
Field	WELD COUNTY	Wellbore	HORSETAIL #07H-1847 AWB
Facility	SEC.07-T10N-R57W		

TARGETS								
Name	TVD [ft]	North [ft]	East [ft]	Grid East [US ft]	Grid North [US ft]	Latitude	Longitude	Shape
SEC.07-T10N-R57W	13.00	23.41	-2503.63	3471270.16	1558347.59	40°51'13.010"N	103°47'46.990"W	polygon
SEC.18-T10N-R57W	13.00	23.41	-2503.63	3471270.16	1558347.59	40°51'13.010"N	103°47'46.990"W	polygon
HORSETAIL FED #07F SOUTH HARDLINES 100'N 1/2 SECTION, 100' S/E/W	5853.00	23.41	-2503.63	3471270.16	1558347.59	40°51'13.010"N	103°47'46.990"W	polygon
HORSETAIL #07H-1847 BHL REV-2 (CDLL, 100'FSL & 648'FEL SEC 18)	5990.00	-7893.01	30.75	3473956.97	1550481.52	40°49'54.790"N	103°47'14.010"W	point
HORSETAIL #07H-1847 BHL REV-1 (CDLL, 100'FSL & 648'FEL SEC 18)	6017.00	-7893.01	30.75	3473956.97	1550481.52	40°49'54.790"N	103°47'14.010"W	point

WELLPATH COMPOSITION - Ref Wellbore: HORSETAIL #07H-1847 AWB Ref Wellpath: HORSETAIL #07H-1847 AWP				
Start MD [ft]	End MD [ft]	Positional Uncertainty Model	Log Name/Comment	Wellbore
21.00	2007.00	Custom BHI NaviTrak (IFR1, Standard Rotating, SAG) (Rockies 0.03Gt model)	BHI/INTEQ NAVITRAK MWD ROCKIES GT, SURCON IFR SAG 13 1/2"<147-2007>	HORSETAIL #07H-1847 AWB
2007.00	14046.00	Custom BHI NaviTrak (IFR1, Standard Rotating, SAG) (Rockies 0.03Gt model)	BHI/INTEQ NAVITRAK MWD ROCKIES GT, SURCON IFR SAG 8 1/2"<2125-14046>	HORSETAIL #07H-1847 AWB
14046.00	14095.00	Blind Drilling (std)	Projection to bit	HORSETAIL #07H-1847 AWB



Actual Wellpath Report

HORSETAIL #07H-1847 AWP

Page 9 of 9



REFERENCE WELLPATH IDENTIFICATION			
Operator	WHITING OIL & GAS CORPORATION	Slot	SLOT#19 HORSETAIL #07H-1847 (2637'FNL & 568'FEL SEC 7)
Area	COLORADO	Well	HORSETAIL #07H-1847
Field	WELD COUNTY	Wellbore	HORSETAIL #07H-1847 AWB
Facility	SEC.07-T10N-R57W		

WELLPATH COMMENTS				
MD [ft]	Inclination [°]	Azimuth [°]	TVD [ft]	Comment
6276.00	72.422	179.313	5951.99	CROSSES 100' SETBACKS (2559'FSL & 593'FEL SEC 7)
6351.00	78.627	179.219	5971.37	BOTTOM MARKER JOINT (2487'FSL & 592'FEL SEC 7)
14046.00	91.140	176.260	6002.84	LAST BHI MWD (106'FSL & 634'FEL SEC 18)
14095.00	91.140	176.260	6001.86	PROJ TO BIT (57'FSL & 631'FEL SEC 18)