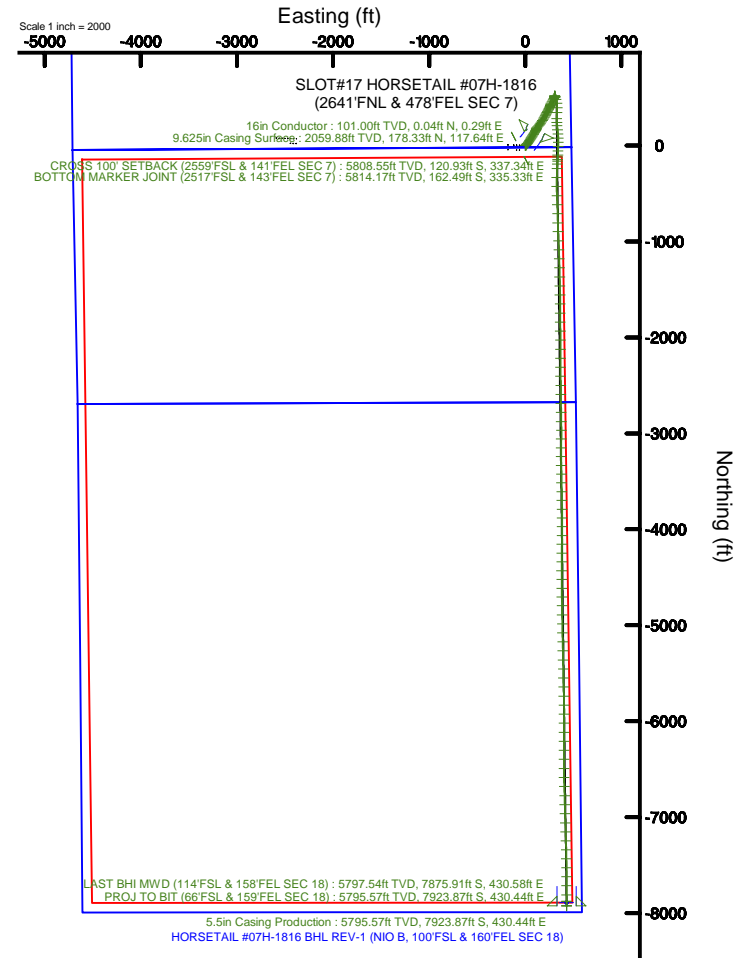
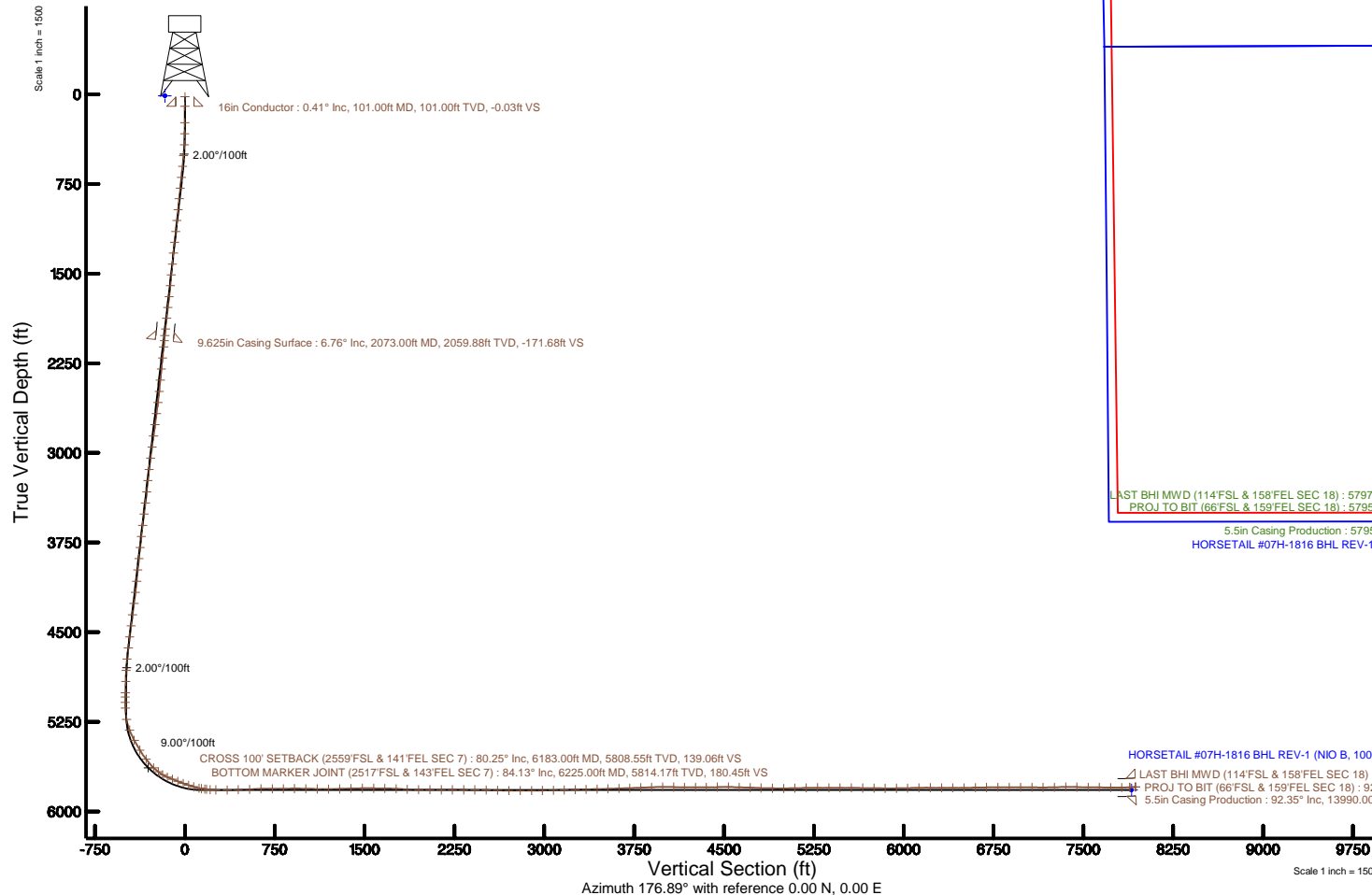


Location:	COLORADO	Slot:	SLOT#17 HORSETAIL #07H-1816 (2641'FNL & 478'FEL SEC 7)
Field:	WELD COUNTY	Well:	HORSETAIL #07H-1816
Facility:	SEC.07-T10N-R57W	Wellbore:	HORSETAIL #07H-1816 PWB




Location:	COLORADO	Slot:	SLOT#17 HORSETAIL #07H-1816 (2641'FNL & 478'FEL SEC 7)
Field:	WELD COUNTY	Well:	HORSETAIL #07H-1816
Facility:	SEC.07-T10N-R57W	Wellbore:	HORSETAIL #07H-1816 PWB

Plot reference wellpath is HORSETAIL 807H-1816 REV-A.0 PWP	Grid System: NAD83 / Lambert Colorado SD, Northern Zone (501), US feet
True vertical depths are referenced to UNIT 406 (21) (RKB)	* = Wellpath was transformed from a different geodetic datum
Measured depths are referenced to UNIT 406 (21) (RKB)	North Reference: True north
UNIT 406 (21) (RKB) to Mean Sea Level: 4933 feet	Scale: True distance
Mean Sea Level to Mud line (At Slot: 4933 ft)	Depths are in feet
Mean Sea Level to Mud line (At Slot: 4933 ft) HORSETAIL 807H-1816 (2641 FNL & 478 FSL SEC 7): 0 feet	Created by: wagnon on 2016-07-07
Coordinates are in feet referenced to Slot	Database: WA_DEN_Denver_Defn

Facility Name			Grid East (US Ft)	Grid North (US Ft)	Latitude	Longitude
SEC 07-10N-R27W			3471270.155	1568347.593	40°51'13.010"N	103°47'46.989"W
Site	Local N (ft)	Local E (ft)	Grid East (US Ft)	Grid North (US Ft)	Latitude	Longitude
SLOT#17 HORSETAIL #07H-1816 (2641FNL & 478FEL SEC 7)	-28.18	2593.54	3473863.745	1568371.246	40°51'12.750"N	103°47'13.249"W
UNIT 405 (21') (RKB) to Mud line (At Slot: SLOT#17 HORSETAIL #07H-1816 (2641 FNL & 478FEL SEC 7))						4933ft
Mean Sea Level to Mud line (At Slot: SLOT#17 HORSETAIL #07H-1816 (2641FNL & 478FEL SEC 7))						49ft
UNIT 405 (21') (RKB) to Mean Sea Level						4933ft



HORSETAIL #07H-1816 BHL REV-1 (NIO B, 100'FSL & 160'FEL SEC 18)

 LAST BHI MWD (114'FSL & 158'FEL SEC 18) : 92.35° Inc, 13942.00ft MD, 5797.54ft TVD, 7887.67ft VS
 PROJ TO BIT (66'FSL & 159'FEL SEC 18) : 92.35° Inc, 13990.00ft MD, 5795.57ft TVD, 7935.55ft VS
 5.5in Casing Production : 92.35° Inc, 13990.00ft MD, 5795.57ft TVD, 7935.55ft VS



Actual Wellpath Report

HORSETAIL #07H-1816 AWP

Page 1 of 9



REFERENCE WELLPATH IDENTIFICATION

Operator	WHITING OIL & GAS CORPORATION	Slot	SLOT#17 HORSETAIL #07H-1816 (2641'FNL & 478'FEL SEC 7)
Area	COLORADO	Well	HORSETAIL #07H-1816
Field	WELD COUNTY	Wellbore	HORSETAIL #07H-1816 AWP
Facility	SEC.07-T10N-R57W		

REPORT SETUP INFORMATION

Projection System	NAD83 / Lambert Colorado SP, Northern Zone (501), US feet	Software System	WellArchitect® 5.0
North Reference	True	User	Wagnjam
Scale	1.000012	Report Generated	7/7/2016 at 1:49:26 PM
Convergence at slot	1.11° East	Database/Source file	WA_DEN_Denver_Defn/HORSETAIL_#07H-1816_AWP.xml

WELLPATH LOCATION

	Local coordinates		Grid coordinates		Geographic coordinates	
	North[ft]	East[ft]	Easting[US ft]	Northing[US ft]	Latitude	Longitude
Slot Location	-26.18	2593.54	3473863.75	1558371.25	40°51'12.750"N	103°47'13.240"W
Facility Reference Pt			3471270.16	1558347.59	40°51'13.010"N	103°47'46.990"W
Field Reference Pt			3471270.16	1558347.59	40°51'13.010"N	103°47'46.990"W

WELLPATH DATUM

Calculation method	Minimum curvature	UNIT 406 (21') (RKB) to Facility Vertical Datum	4933.00ft
Horizontal Reference Pt	Slot	UNIT 406 (21') (RKB) to Mean Sea Level	4933.00ft
Vertical Reference Pt	UNIT 406 (21') (RKB)	UNIT 406 (21') (RKB) to Mud Line at Slot (SLOT#17 HORSETAIL #07H-1816 (2641'FNL & 478'FEL SEC 7))	4933.00ft
MD Reference Pt	UNIT 406 (21') (RKB)	Section Origin	N 0.00, E 0.00 ft
Field Vertical Reference	Mean Sea Level	Section Azimuth	176.89°



Actual Wellpath Report

HORSETAIL #07H-1816 AWP
Page 2 of 9



REFERENCE WELLPATH IDENTIFICATION

Operator	WHITING OIL & GAS CORPORATION	Slot	SLOT#17 HORSETAIL #07H-1816 (2641'FNL & 478'FEL SEC 7)
Area	COLORADO	Well	HORSETAIL #07H-1816
Field	WELD COUNTY	Wellbore	HORSETAIL #07H-1816 AWB
Facility	SEC.07-T10N-R57W		

WELLPATH DATA (161 stations) † = interpolated/extrapolated station

MD [ft]	Inclination [°]	Azimuth [°]	TVD [ft]	Vert Sect [ft]	North [ft]	East [ft]	DLS [°/100ft]	Comments
0.00†	0.000	81.420	0.00	0.00	0.00	0.00	0.00	
21.00	0.000	81.420	21.00	0.00	0.00	0.00	0.00	
239.00	1.130	81.420	238.99	-0.20	0.32	2.13	0.52	
331.00	2.640	59.810	330.93	-1.26	1.52	4.85	1.79	
422.00	4.440	45.700	421.76	-4.53	5.04	9.19	2.18	
514.00	6.290	37.350	513.35	-10.71	11.53	14.79	2.18	
605.00	7.830	36.610	603.66	-19.27	20.47	21.52	1.70	
697.00	7.840	36.680	694.80	-28.91	30.53	29.00	0.02	
788.00	7.780	36.640	784.96	-38.42	40.45	36.38	0.07	
878.00	7.290	35.340	874.18	-47.57	50.00	43.32	0.58	
970.00	6.590	35.010	965.51	-56.30	59.08	49.73	0.76	
1062.00	7.900	30.580	1056.77	-65.71	68.85	55.97	1.55	
1153.00	7.610	30.460	1146.94	-75.93	79.43	62.21	0.32	
1245.00	7.190	31.090	1238.17	-85.77	89.61	68.27	0.46	
1336.00	7.110	30.780	1328.46	-95.16	99.33	74.09	0.10	
1428.00	6.960	31.500	1419.77	-104.47	108.97	79.92	0.19	
1519.00	6.640	31.890	1510.13	-113.32	118.14	85.58	0.36	
1611.00	6.320	31.660	1601.54	-121.83	126.96	91.05	0.35	
1703.00	8.420	30.530	1692.78	-131.60	137.08	97.13	2.29	
1794.00	7.520	27.700	1782.90	-142.26	148.09	103.28	1.08	
1886.00	6.330	22.790	1874.23	-152.00	158.09	108.04	1.44	
1977.00	7.280	25.920	1964.58	-161.55	167.91	112.51	1.12	
2031.00	6.850	26.240	2018.17	-167.35	173.87	115.43	0.80	
2126.00	6.650	26.790	2112.52	-177.06	183.86	120.41	0.22	
2220.00	8.350	43.730	2205.72	-186.44	193.66	127.58	2.95	
2314.00	8.120	43.370	2298.75	-195.68	203.41	136.86	0.25	
2408.00	7.960	42.610	2391.83	-204.80	213.03	145.82	0.20	
2502.00	6.730	33.580	2485.06	-213.76	222.41	153.28	1.79	
2597.00	9.770	34.490	2579.06	-224.61	233.69	160.92	3.20	
2691.00	9.580	34.270	2671.72	-237.15	246.73	169.84	0.21	



Actual Wellpath Report

HORSETAIL #07H-1816 AWP

Page 3 of 9



REFERENCE WELLPATH IDENTIFICATION

Operator	WHITING OIL & GAS CORPORATION	Slot	SLOT#17 HORSETAIL #07H-1816 (2641'FNL & 478'FEL SEC 7)
Area	COLORADO	Well	HORSETAIL #07H-1816
Field	WELD COUNTY	Wellbore	HORSETAIL #07H-1816 AWB
Facility	SEC.07-T10N-R57W		

WELLPATH DATA (161 stations)

MD [ft]	Inclination [°]	Azimuth [°]	TVD [ft]	Vert Sect [ft]	North [ft]	East [ft]	DLS [°/100ft]	Comments
2785.00	9.460	33.410	2764.43	-249.57	259.64	178.50	0.20	
2880.00	9.180	31.470	2858.18	-262.08	272.62	186.76	0.44	
2974.00	8.720	30.950	2951.03	-274.16	285.13	194.34	0.50	
3068.00	8.450	29.090	3043.98	-285.91	297.28	201.36	0.41	
3163.00	8.150	27.660	3137.98	-297.60	309.34	207.88	0.38	
3257.00	7.290	25.020	3231.13	-308.58	320.65	213.49	0.99	
3352.00	6.750	23.580	3325.42	-318.89	331.22	218.28	0.60	
3446.00	8.250	28.530	3418.61	-329.57	342.21	223.71	1.74	
3540.00	7.880	28.510	3511.68	-340.79	353.80	230.00	0.39	
3635.00	8.030	27.660	3605.77	-352.04	365.40	236.19	0.20	
3729.00	7.690	27.430	3698.89	-363.10	376.80	242.14	0.36	
3823.00	7.290	26.570	3792.08	-373.70	387.71	247.70	0.44	
3917.00	6.680	25.040	3885.38	-383.70	398.00	252.68	0.68	
4012.00	6.060	20.860	3979.80	-393.15	407.69	256.81	0.81	
4106.00	5.690	5.420	4073.31	-402.29	416.97	259.02	1.72	
4200.00	7.970	22.890	4166.65	-412.76	427.62	261.99	3.26	
4295.00	8.810	31.050	4260.63	-424.70	439.92	268.31	1.53	
4389.00	8.670	30.700	4353.54	-436.55	452.17	275.64	0.16	
4483.00	8.500	30.110	4446.49	-448.24	464.28	282.74	0.20	
4577.00	8.620	30.340	4539.44	-459.93	476.37	289.78	0.13	
4671.00	8.780	27.650	4632.36	-471.98	488.80	296.67	0.47	
4765.00	7.420	40.560	4725.43	-482.53	499.77	303.95	2.41	
4859.00	3.510	10.360	4819.00	-489.72	507.21	308.41	5.03	
4953.00	1.610	341.660	4912.90	-493.80	511.30	308.52	2.38	
5048.00	1.980	328.190	5007.86	-496.52	513.96	307.23	0.59	
5082.00	2.350	324.330	5041.83	-497.63	515.03	306.51	1.17	
5127.00	1.660	214.830	5086.82	-497.89	515.24	305.60	7.33	
5176.00	1.710	212.160	5135.80	-496.73	514.04	304.81	0.19	
5270.00	11.610	151.900	5229.09	-486.99	504.48	308.53	11.56	
5364.00	21.950	158.590	5318.98	-461.66	479.71	319.43	11.17	



Actual Wellpath Report

HORSETAIL #07H-1816 AWP

Page 4 of 9



REFERENCE WELLPATH IDENTIFICATION

Operator	WHITING OIL & GAS CORPORATION	Slot	SLOT#17 HORSETAIL #07H-1816 (2641'FNL & 478'FEL SEC 7)
Area	COLORADO	Well	HORSETAIL #07H-1816
Field	WELD COUNTY	Wellbore	HORSETAIL #07H-1816 AWB
Facility	SEC.07-T10N-R57W		

WELLPATH DATA (161 stations) † = interpolated/extrapolated station

MD [ft]	Inclination [°]	Azimuth [°]	TVD [ft]	Vert Sect [ft]	North [ft]	East [ft]	DLS [°/100ft]	Comments
5459.00	28.600	171.900	5404.90	-422.08	440.59	329.13	9.17	
5553.00	31.150	183.070	5486.47	-375.45	394.00	331.00	6.50	
5646.00	37.470	182.240	5563.25	-323.32	341.66	328.61	6.81	
5741.00	45.150	180.760	5634.56	-260.85	279.02	327.03	8.15	
5793.00	52.950	177.200	5668.62	-221.64	239.79	327.80	15.86	
5835.00	59.910	174.370	5691.83	-186.68	204.92	330.40	17.49	
5882.00	66.320	173.630	5713.07	-144.84	163.25	334.79	13.71	
5928.00	68.050	173.060	5730.91	-102.52	121.14	339.70	3.93	
5976.00	69.500	176.430	5748.29	-57.82	76.59	343.79	7.21	
6023.00	70.580	182.520	5764.35	-13.71	32.44	344.19	12.39	
6070.00	70.550	182.470	5779.99	30.40	-11.84	342.26	0.12	
6116.00	74.580	182.570	5793.77	74.06	-55.67	340.33	8.76	
6163.00	78.230	182.640	5804.81	119.51	-101.30	338.26	7.77	
6183.00†	80.247	182.691	5808.55	139.06	-120.93	337.34	10.09	CROSS 100' SETBACK (2559'FSL & 141'FEL SEC 7)
6210.00	82.970	182.760	5812.49	165.63	-147.60	336.07	10.09	
6225.00†	84.125	182.946	5814.17	180.45	-162.49	335.33	7.80	BOTTOM MARKER JOINT (2517'FSL & 143'FEL SEC 7)
6257.00	86.590	183.340	5816.76	212.16	-194.33	333.58	7.80	
6304.00	88.100	182.930	5818.94	258.83	-241.21	331.01	3.33	
6398.00	90.500	180.760	5820.09	352.45	-335.14	327.99	3.44	
6491.00	91.510	180.140	5818.46	445.26	-428.12	327.26	1.27	
6586.00	92.850	177.510	5814.84	540.13	-523.03	329.20	3.11	
6681.00	91.980	177.520	5810.84	635.03	-617.85	333.32	0.92	
6775.00	89.300	178.600	5809.79	729.00	-711.78	336.50	3.07	
6869.00	90.960	179.160	5809.57	822.94	-805.76	338.34	1.86	
6962.00	90.130	177.600	5808.69	915.90	-898.71	340.97	1.90	
7056.00	88.560	177.210	5809.76	1009.89	-992.61	345.22	1.72	
7151.00	89.240	177.890	5811.59	1104.86	-1087.50	349.28	1.01	
7245.00	90.040	178.010	5812.18	1198.84	-1181.44	352.64	0.86	
7339.00	91.020	178.680	5811.31	1292.81	-1275.40	355.36	1.26	
7433.00	92.470	178.390	5808.45	1386.72	-1369.32	357.76	1.57	



Actual Wellpath Report

HORSETAIL #07H-1816 AWP

Page 5 of 9



REFERENCE WELLPATH IDENTIFICATION

Operator	WHITING OIL & GAS CORPORATION	Slot	SLOT#17 HORSETAIL #07H-1816 (2641'FNL & 478'FEL SEC 7)
Area	COLORADO	Well	HORSETAIL #07H-1816
Field	WELD COUNTY	Wellbore	HORSETAIL #07H-1816 AWB
Facility	SEC.07-T10N-R57W		

WELLPATH DATA (161 stations)

MD [ft]	Inclination [°]	Azimuth [°]	TVD [ft]	Vert Sect [ft]	North [ft]	East [ft]	DLS [°/100ft]	Comments
7528.00	90.410	178.940	5806.06	1481.64	-1464.26	359.97	2.24	
7622.00	89.390	179.300	5806.22	1575.57	-1558.24	361.42	1.15	
7716.00	89.270	178.970	5807.32	1669.49	-1652.23	362.84	0.37	
7811.00	86.680	179.920	5810.68	1764.32	-1747.15	363.76	2.90	
7904.00	87.510	179.660	5815.39	1857.09	-1840.03	364.10	0.94	
7999.00	89.000	179.110	5818.29	1951.95	-1934.98	365.12	1.67	
8093.00	90.750	179.570	5818.49	2045.86	-2028.97	366.20	1.92	
8187.00	89.240	180.150	5818.50	2139.73	-2122.97	366.43	1.72	
8281.00	90.720	180.500	5818.53	2233.56	-2216.96	365.90	1.62	
8375.00	89.240	179.860	5818.56	2327.40	-2310.96	365.60	1.72	
8469.00	90.040	178.460	5819.16	2421.32	-2404.94	366.98	1.72	
8564.00	88.290	179.530	5820.54	2516.24	-2499.91	368.64	2.16	
8659.00	88.650	179.500	5823.08	2611.11	-2594.88	369.45	0.38	
8753.00	89.150	178.960	5824.88	2705.01	-2688.85	370.71	0.78	
8847.00	89.510	178.480	5825.98	2798.96	-2782.82	372.81	0.64	
8942.00	90.900	179.660	5825.64	2893.88	-2877.80	374.35	1.92	
9033.00	91.000	179.290	5824.13	2984.78	-2968.79	375.19	0.42	
9124.00	91.450	181.060	5822.19	3075.60	-3059.76	374.91	2.01	
9215.00	91.360	180.650	5819.95	3166.36	-3150.72	373.55	0.46	
9307.00	91.670	179.640	5817.52	3258.17	-3242.69	373.32	1.15	
9399.00	91.420	179.460	5815.04	3350.04	-3334.65	374.04	0.33	
9490.00	90.930	178.960	5813.18	3440.95	-3425.63	375.30	0.77	
9581.00	91.920	179.140	5810.91	3531.85	-3516.58	376.80	1.11	
9673.00	91.980	178.630	5807.78	3623.74	-3608.51	378.59	0.56	
9763.00	91.580	179.380	5804.99	3713.64	-3698.45	380.16	0.94	
9855.00	92.870	178.380	5801.41	3805.51	-3790.36	381.95	1.77	
9946.00	92.380	180.000	5797.25	3896.34	-3881.26	383.24	1.86	
10038.00	90.440	179.580	5794.98	3988.19	-3973.22	383.57	2.16	
10130.00	88.190	180.910	5796.08	4080.02	-4065.21	383.18	2.84	
10221.00	89.270	181.280	5798.10	4170.75	-4156.17	381.44	1.25	



Actual Wellpath Report

HORSETAIL #07H-1816 AWP

Page 6 of 9



REFERENCE WELLPATH IDENTIFICATION

Operator	WHITING OIL & GAS CORPORATION	Slot	SLOT#17 HORSETAIL #07H-1816 (2641'FNL & 478'FEL SEC 7)
Area	COLORADO	Well	HORSETAIL #07H-1816
Field	WELD COUNTY	Wellbore	HORSETAIL #07H-1816 AWB
Facility	SEC.07-T10N-R57W		

WELLPATH DATA (161 stations)

MD [ft]	Inclination [°]	Azimuth [°]	TVD [ft]	Vert Sect [ft]	North [ft]	East [ft]	DLS [°/100ft]	Comments
10312.00	90.660	180.980	5798.16	4261.49	-4247.15	379.65	1.56	
10404.00	90.040	180.360	5797.59	4353.29	-4339.14	378.57	0.95	
10496.00	91.490	180.080	5796.37	4445.13	-4431.13	378.22	1.61	
10588.00	89.330	179.340	5795.71	4537.01	-4523.12	378.68	2.48	
10679.00	87.800	179.100	5797.99	4627.90	-4614.08	379.92	1.70	
10771.00	88.160	179.400	5801.23	4719.76	-4706.01	381.13	0.51	
10861.00	88.410	178.950	5803.92	4809.65	-4795.96	382.42	0.57	
10956.00	88.870	179.080	5806.18	4904.56	-4890.92	384.05	0.50	
11050.00	90.440	179.390	5806.74	4998.47	-4984.91	385.31	1.70	
11144.00	91.090	178.530	5805.49	5092.40	-5078.88	387.01	1.15	
11238.00	92.070	178.380	5802.90	5186.33	-5172.81	389.55	1.05	
11332.00	89.550	179.180	5801.57	5280.26	-5266.77	391.55	2.81	
11427.00	89.700	178.790	5802.19	5375.20	-5361.76	393.23	0.44	
11521.00	90.410	178.820	5802.10	5469.14	-5455.74	395.19	0.76	
11615.00	88.740	179.050	5802.80	5563.08	-5549.71	396.94	1.79	
11709.00	89.910	178.020	5803.90	5657.03	-5643.67	399.34	1.66	
11804.00	88.500	179.070	5805.22	5751.98	-5738.63	401.75	1.85	
11898.00	89.820	178.310	5806.60	5845.92	-5832.59	403.90	1.62	
11992.00	90.590	180.830	5806.26	5939.81	-5926.58	404.61	2.80	
12086.00	91.330	181.120	5804.69	6033.55	-6020.55	403.01	0.85	
12180.00	91.670	179.430	5802.23	6127.35	-6114.52	402.56	1.83	
12274.00	89.120	180.560	5801.58	6221.20	-6208.50	402.57	2.97	
12369.00	89.270	179.840	5802.91	6316.03	-6303.49	402.23	0.77	
12463.00	90.130	180.060	5803.41	6409.90	-6397.49	402.32	0.94	
12558.00	91.020	180.050	5802.45	6504.75	-6492.49	402.23	0.94	
12652.00	90.900	178.600	5800.88	6598.65	-6586.46	403.33	1.55	
12746.00	91.760	178.250	5798.70	6692.59	-6680.40	405.92	0.99	
12841.00	89.480	178.340	5797.67	6787.55	-6775.35	408.74	2.40	
12935.00	89.910	178.280	5798.17	6881.52	-6869.31	411.51	0.46	
13030.00	90.710	178.380	5797.65	6976.48	-6964.26	414.28	0.85	



Actual Wellpath Report

HORSETAIL #07H-1816 AWP
Page 7 of 9



REFERENCE WELLPATH IDENTIFICATION			
Operator	WHITING OIL & GAS CORPORATION	Slot	SLOT#17 HORSETAIL #07H-1816 (2641'FNL & 478'FEL SEC 7)
Area	COLORADO	Well	HORSETAIL #07H-1816
Field	WELD COUNTY	Wellbore	HORSETAIL #07H-1816 AWB
Facility	SEC.07-T10N-R57W		

WELLPATH DATA (161 stations)								
MD [ft]	Inclination [°]	Azimuth [°]	TVD [ft]	Vert Sect [ft]	North [ft]	East [ft]	DLS [°/100ft]	Comments
13124.00	88.740	178.400	5798.11	7070.45	-7058.22	416.92	2.10	
13218.00	90.100	178.240	5799.06	7164.41	-7152.17	419.68	1.46	
13312.00	91.820	178.040	5797.48	7258.37	-7246.11	422.73	1.84	
13406.00	90.530	178.350	5795.55	7352.32	-7340.04	425.69	1.41	
13500.00	88.590	179.220	5796.28	7446.26	-7434.01	427.68	2.26	
13594.00	90.440	179.010	5797.07	7540.19	-7527.99	429.13	1.98	
13687.00	88.220	179.640	5798.16	7633.09	-7620.97	430.23	2.48	
13781.00	89.420	179.940	5800.10	7726.95	-7714.95	430.57	1.32	
13875.00	91.180	179.960	5799.60	7820.81	-7808.94	430.66	1.87	
13942.00	92.350	180.170	5797.54	7887.67	-7875.91	430.58	1.77	LAST BHI MWD (114'FSL & 158'FEL SEC 18)
13990.00	92.350	180.170	5795.57	7935.55	-7923.87	430.44	0.00	PROJ TO BIT (66'FSL & 159'FEL SEC 18)

HOLE & CASING SECTIONS - Ref Wellbore: HORSETAIL #07H-1816 AWB Ref Wellpath: HORSETAIL #07H-1816 AWP										
String/Diameter	Start MD [ft]	End MD [ft]	Interval [ft]	Start TVD [ft]	End TVD [ft]	Start N/S [ft]	Start E/W [ft]	End N/S [ft]	End E/W [ft]	
16in Conductor	21.00	101.00	80.00	21.00	101.00	0.00	0.00	0.04	0.29	
13.5in Open Hole	21.00	2085.00	2064.00	21.00	2071.79	0.00	0.00	179.59	118.27	
9.625in Casing Surface	21.00	2073.00	2052.00	21.00	2059.88	0.00	0.00	178.33	117.64	
8.5in Open Hole	2085.00	13990.00	11905.00	2071.79	5795.57	179.59	118.27	-7923.87	430.44	
5.5in Casing Production	21.00	13990.00	13969.00	21.00	5795.57	0.00	0.00	-7923.87	430.44	



Actual Wellpath Report

HORSETAIL #07H-1816 AWP
Page 8 of 9



REFERENCE WELLPATH IDENTIFICATION			
Operator	WHITING OIL & GAS CORPORATION	Slot	SLOT#17 HORSETAIL #07H-1816 (2641'FNL & 478'FEL SEC 7)
Area	COLORADO	Well	HORSETAIL #07H-1816
Field	WELD COUNTY	Wellbore	HORSETAIL #07H-1816 AWB
Facility	SEC.07-T10N-R57W		

TARGETS								
Name	TVD [ft]	North [ft]	East [ft]	Grid East [US ft]	Grid North [US ft]	Latitude	Longitude	Shape
SEC.06-T10N-R57W	13.00	26.45	-2593.54	3471270.16	1558347.59	40°51'13.010"N	103°47'46.990"W	polygon
SEC.07-T10N-R57W	13.00	26.45	-2593.54	3471270.16	1558347.59	40°51'13.010"N	103°47'46.990"W	polygon
SEC.18-T10N-R57W	13.00	26.45	-2593.54	3471270.16	1558347.59	40°51'13.010"N	103°47'46.990"W	polygon
HORSETAIL #07H-1816 BHL REV-1 (NIO B, 100'FSL & 160'FEL SEC 18)	5821.00	-7889.97	428.94	3474445.01	1550490.96	40°49'54.790"N	103°47'07.660"W	point
HORSETAIL FED #07F SOUTH HARDLINES 100'N 1/2 SECTION, 100' S/E/W	5853.00	26.45	-2593.54	3471270.16	1558347.59	40°51'13.010"N	103°47'46.990"W	polygon

WELLPATH COMPOSITION - Ref Wellbore: HORSETAIL #07H-1816 AWB				Ref Wellpath: HORSETAIL #07H-1816 AWP	
Start MD [ft]	End MD [ft]	Positional Uncertainty Model	Log Name/Comment		Wellbore
21.00	2031.00	Custom BHI NaviTrak (IFR1, Standard Rotating, SAG) (Rockies 0.03Gt model)	BHI/INTEQ NAVITRAK MWD SURCON IFR SAG CORRECTION 13 1/2"<239-2031>		HORSETAIL #07H-1816 AWB
2031.00	13942.00	Custom BHI NaviTrak (IFR1, Standard Rotating, SAG) (Rockies 0.03Gt model)	BHI/INTEQ NAVITRAK MWD SURCON IFR SAG CORRECTED <2126-13942>		HORSETAIL #07H-1816 AWB
13942.00	13990.00	Blind Drilling (std)	Projection to bit		HORSETAIL #07H-1816 AWB



Actual Wellpath Report

HORSETAIL #07H-1816 AWP

Page 9 of 9



REFERENCE WELLPATH IDENTIFICATION			
Operator	WHITING OIL & GAS CORPORATION	Slot	SLOT#17 HORSETAIL #07H-1816 (2641'FNL & 478'FEL SEC 7)
Area	COLORADO	Well	HORSETAIL #07H-1816
Field	WELD COUNTY	Wellbore	HORSETAIL #07H-1816 AWB
Facility	SEC.07-T10N-R57W		

WELLPATH COMMENTS					
MD [ft]	Inclination [°]	Azimuth [°]	TVD [ft]	Comment	
6183.00	80.247	182.691	5808.55	CROSS 100' SETBACK (2559'FSL & 141'FEL SEC 7)	
6225.00	84.125	182.946	5814.17	BOTTOM MARKER JOINT (2517'FSL & 143'FEL SEC 7)	
13942.00	92.350	180.170	5797.54	LAST BHI MWD (114'FSL & 158'FEL SEC 18)	
13990.00	92.350	180.170	5795.57	PROJ TO BIT (66'FSL & 159'FEL SEC 18)	