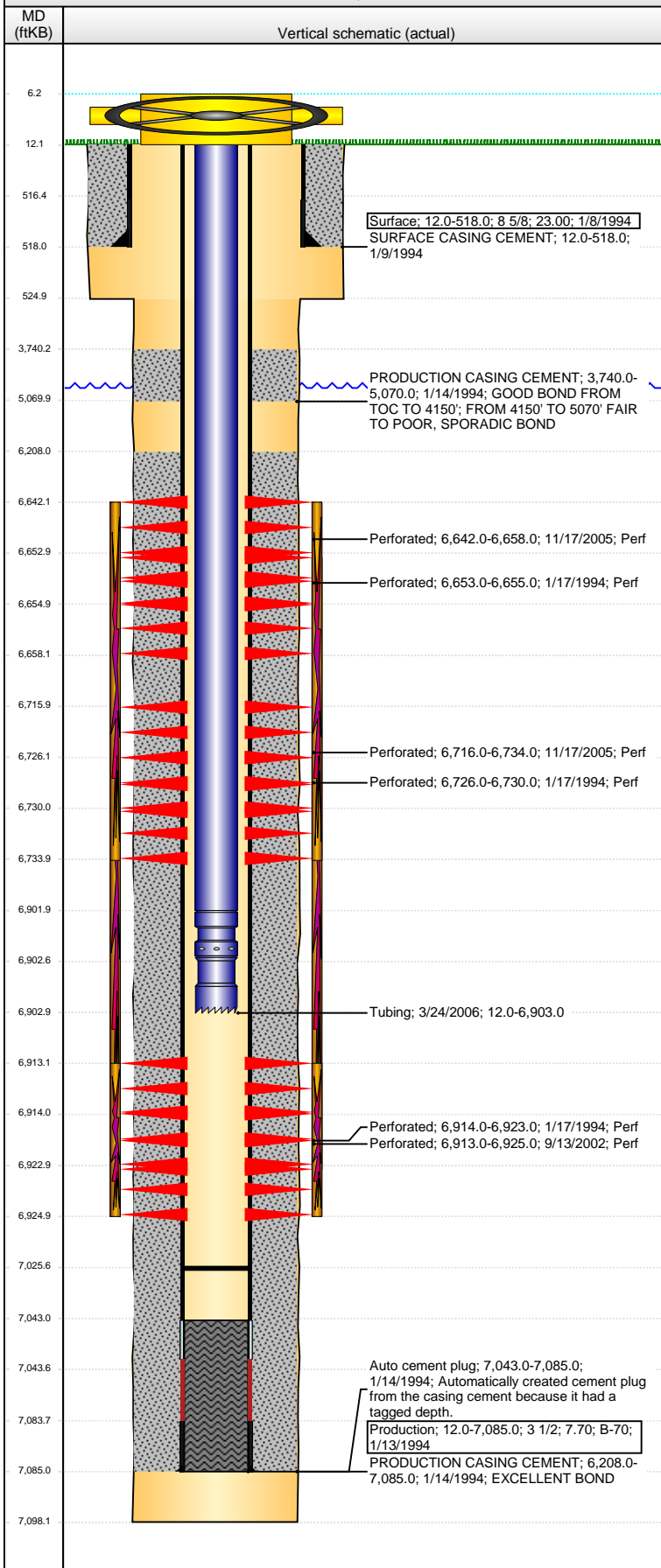


Well Name: LEONARD 21-0614

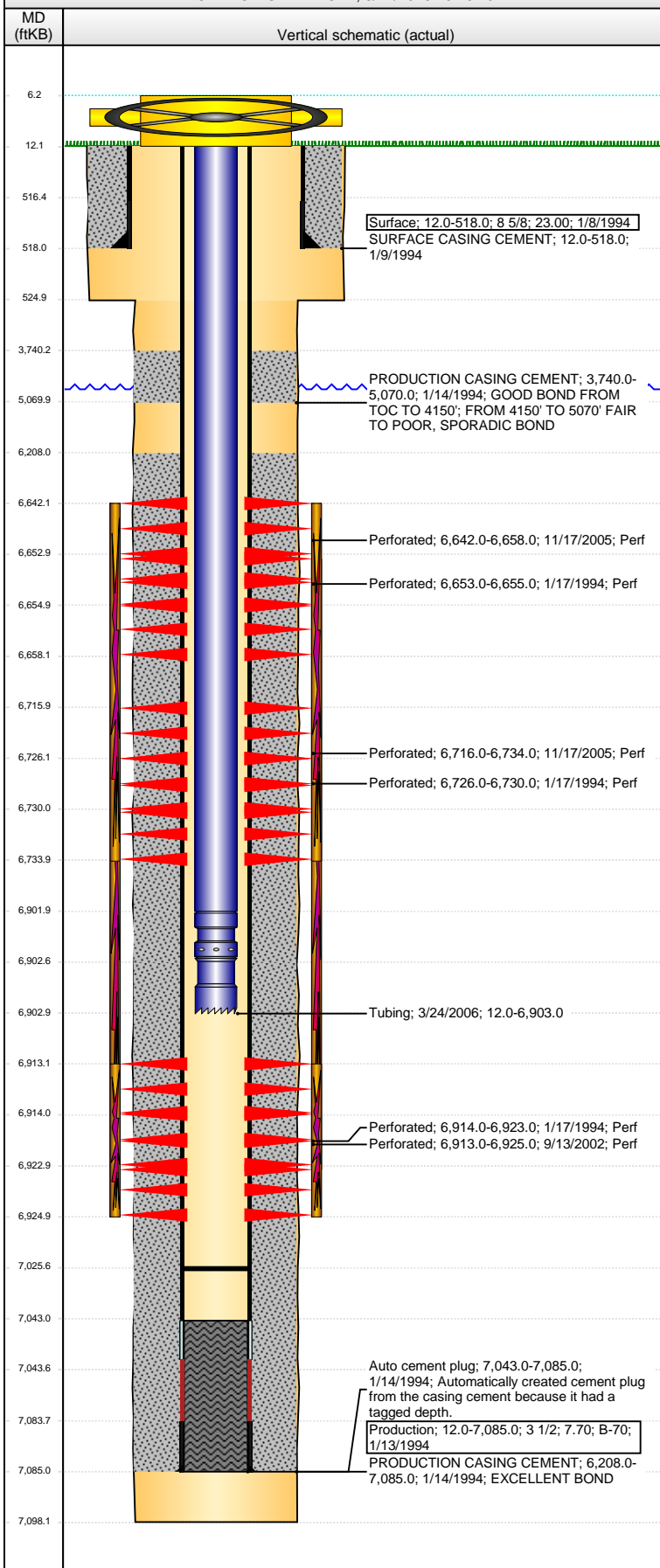
VERTICAL - ORIGINAL HOLE, 8/11/2016 10:16:11 AM



Well Header								
API 05-123-17903		Business Unit DJ BASIN		District 15		Well Config VERTICAL		
Original KB Elevation (ft) 4,736		KB - GL / MSL (ftKB) 12.00		Spud Date 1/8/1994		P & A Date		
Comment								
Directions To Well								
Congressional Location								
Quarter 3 SE	Quarter 4 NW	Section 21	Township 4	Twntshp N/S Dir N	Range 64	Range E/W Dir W		
Bottom Hole Location								
North-South Distance (ft)		From N or S Line		East-West Distance (ft)		From E or W Line		
Plug Back Total Depths								
Date	Depth (ftKB)	Method		Com				
1/14/1994	7,043.0	CASING TALLY		TOP OF FLOAT COLLAR				
1/17/1994	7,024.0	CASED HOLE LOG		CBL DEPTH LOGGER				
3/24/2006	7,025.7	TAG		MOST RECENT C/O				
Wellbore Sections								
Section Des		Size (in)		Act Top, MD (ftKB)		Act Btm, MD (ftKB)		
SURFACE		12 1/4		12		525		
PRODUCTION		7 7/8		525		7,098		
Zone Statuses								
Zone Name	Status Date	Status	Fluid Type	Job	Prod Method			
NIOBRARA	1/29/1994	PR		DRILLING/CO...				
NIOBRARA	3/25/2006	PR		RE-FRAC, 11/1...				
CODELL	1/29/1994	PR		DRILLING/CO...				
CODELL	12/7/2002	PR		RE-FRAC, 9/11...				
Casing Strings								
Surface, 518.0ftKB								
Casing Description Surface		Run Date 1/8/1994	OD (in) 8 5/8	Wt/Len (l... 23.00	Grade 12.0	Top, MD (ft... MD (ftKB) 518.0		
Production, 7,085.0ftKB								
Casing Description Production		Run Date 1/13/1994	OD (in) 3 1/2	Wt/Len (l... 7.70	Grade B-70	Top, MD (ft... MD (ftKB) 7,085.0		
Cement								
Description SURFACE CASING CEMENT				Top Depth (ftKB) 12.0		Bottom Depth (ftKB) 518.0		
Description PRODUCTION CASING CEMENT				Top Depth (ftKB) 3,740.0		Bottom Depth (ftKB) 5,070.0		
Description PRODUCTION CASING CEMENT				Top Depth (ftKB) 6,208.0		Bottom Depth (ftKB) 7,085.0		
Tubing Strings								
Tubing Description Tubing		Run Date 3/24/2006	String... 2 1/16	ID (in) 1.751	Wt (lb/ft) 3.25	Grade J-55	Len (ft) 6,891.00	Set De...
Tubing Components								
Item Des		OD (in)	Wt (lb/ft)	Grade	Jts	Len (ft)	Btm (ftKB)	Btm (TVD) (ftKB)
Tubing		2 1/16	3.25	J-55	212	6,889.90	6,901.9	
Seal Nipple		2 1/16			1	0.60	6,902.5	
Notched collar		2 1/16			1	0.50	6,903.0	
Perforation Data								
Zone		Bnch/St g	Entered Shot Total	Top (ftKB)		Btm (ftKB)		Date
NIOBRARA, ORIGINAL HOLE		B	96	6,642.00		6,658.00		11/17/2005
NIOBRARA, ORIGINAL HOLE		B	2	6,653.00		6,655.00		1/17/1994
NIOBRARA, ORIGINAL HOLE		C	108	6,716.00		6,734.00		11/17/2005
NIOBRARA, ORIGINAL HOLE		C	4	6,726.00		6,730.00		1/17/1994
CODELL, ORIGINAL HOLE			52	6,913.00		6,925.00		9/13/2002
CODELL, ORIGINAL HOLE			9	6,914.00		6,923.00		1/17/1994

Well Name: LEONARD 21-06I4

VERTICAL - ORIGINAL HOLE, 8/11/2016 10:16:13 AM



Stimulations & Treatments

Date	Zone	Primary Job Type
1/19/1994	NIOBRARA-CODELL, ORIGINAL HOLE	DRILLING/COMPLETION - ORIGINAL
Technical Result	Tech Result Details	Tech Result Note
Comment		
Date	Zone	Primary Job Type
11/20/2002	CODELL, ORIGINAL HOLE	RE-FRAC
Technical Result	Tech Result Details	Tech Result Note
Comment		
Date	Zone	Primary Job Type
1/10/2006	NIOBRARA, ORIGINAL HOLE	RE-FRAC
Technical Result	Tech Result Details	Tech Result Note
Comment		

Other In Hole

Run Date	Des	OD (in)	Top (ftKB)	Btm (ftKB)

Logs

Date	Type	Top, MD (ftKB)	Btm, MD (ftKB)
1/13/1994	COMPENSATED DENSITY	4,180.0	7,096.0
1/13/1994	INDUCTION	518.0	7,096.0
1/17/1994	CBL/CCL/GR	3,650.0	7,019.0