

WHITING OIL & GAS CORPORATION

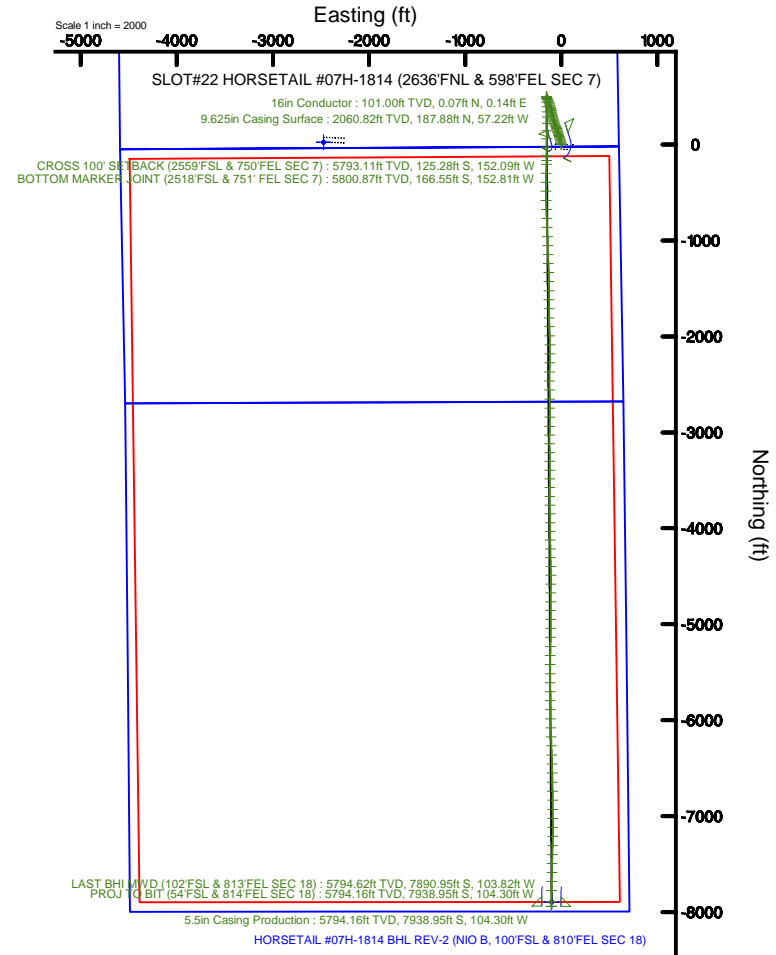
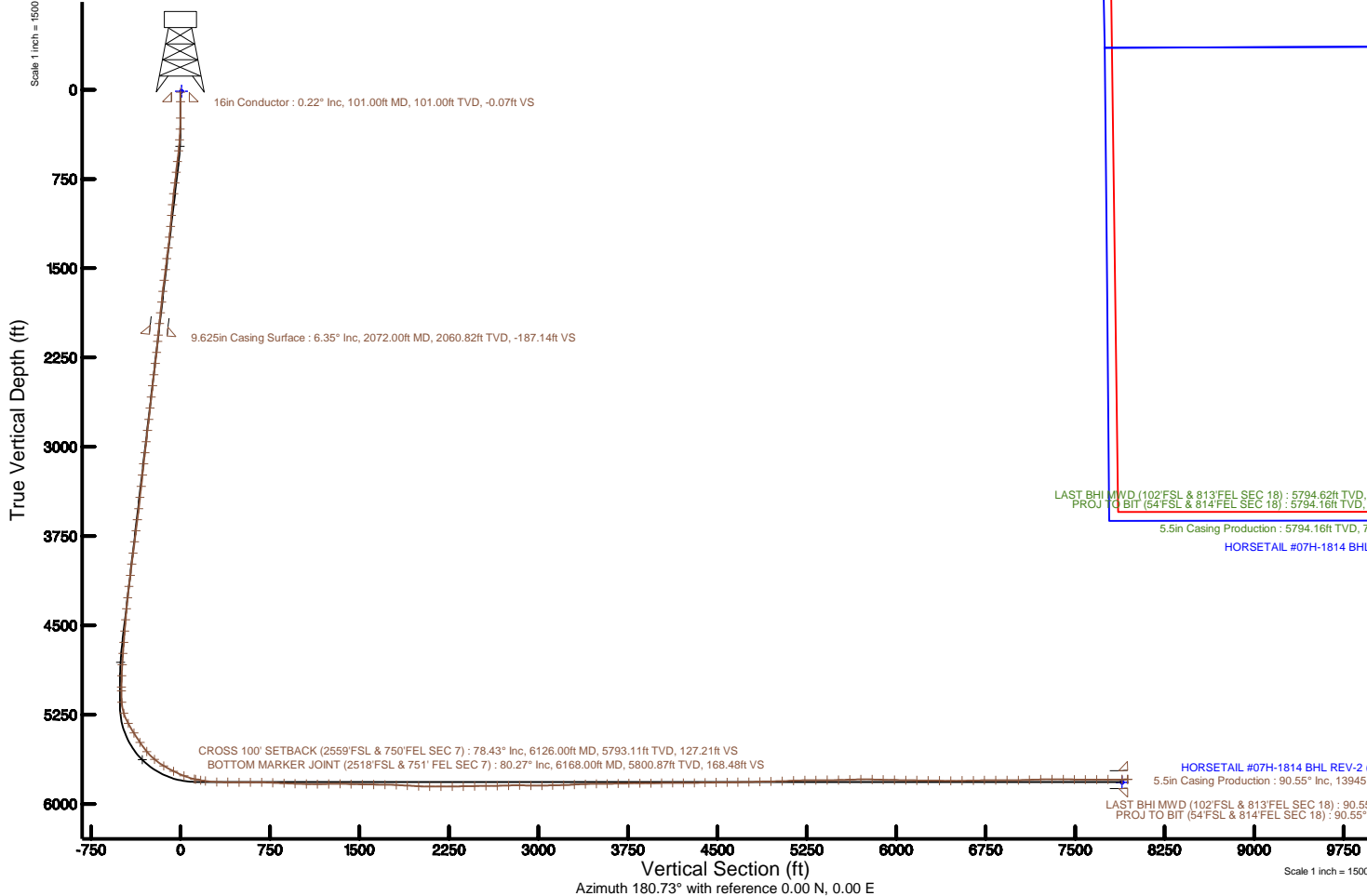
Location: COLORADO Slot: SLOT#22 HORSETAIL #07H-1814 (2636'FNL & 598'FEL SEC 7)
 Field: WELD COUNTY Well: HORSETAIL #07H-1814
 Facility: SEC.07-T10N-R57W Wellbore: HORSETAIL #07H-1814 PWB



Plot reference wellpath is HORSETAIL #07H-1814 REV-B.0 PWP	Grid System: NAD83 / Lambert Colorado SP, Northern Zone (501), US feet
True vertical depths are referenced to UNIT 406 (21) (RKB)	- Wellpath was transformed from a different geosidetic datum
Measured depths are referenced to UNIT 406 (21) (RKB)	North Reference: True north
UNIT 406 (21) (RKB) to Mean Sea Level: 4933 feet	Scale: True distance
Mean Sea Level to Mud line (At Slot: SLOT#22 HORSETAIL #07H-1814 (2636'FNL & 598'FEL SEC 7)): 0 feet	Depths are in feet
Coordinates are in feet referenced to Slot	Created by: wagnjam on 2016-07-18
	Database: WA_DEN_Denver_Defn

Location Information

Facility Name		Grid East (US ft)	Grid North (US ft)	Latitude	Longitude	
SEC.07-T10N-R57W		3471270.155	1558347.593	40°5'13.010"N	103°47'46.990"W	
Slot	Local N (ft)	Local E (ft)	Grid East (US ft)	Grid North (US ft)	Latitude	Longitude
SLOT#22 HORSETAIL #07H-1814 (2636'FNL & 598'FEL SEC 7)	-23.15	2473.66	3473743.828	1558371.866	40°5'12.780"N	103°47'14.800"W
UNIT 406 (21) (RKB) to Mud line (At Slot: SLOT#22 HORSETAIL #07H-1814 (2636'FNL & 598'FEL SEC 7))				4933ft		
Mean Sea Level to Mud line (At Slot: SLOT#22 HORSETAIL #07H-1814 (2636'FNL & 598'FEL SEC 7))				0ft		
UNIT 406 (21) (RKB) to Mean Sea Level				4933ft		



Scale 1 inch = 1500

Azimuth 180.73° with reference 0.00 N, 0.00 E



Actual Wellpath Report

HORSETAIL #07H-1814 AWP

Page 1 of 9



REFERENCE WELLPATH IDENTIFICATION

Operator	WHITING OIL & GAS CORPORATION	Slot	SLOT#22 HORSETAIL #07H-1814 (2636'FNL & 598'FEL SEC 7)
Area	COLORADO	Well	HORSETAIL #07H-1814
Field	WELD COUNTY	Wellbore	HORSETAIL #07H-1814 AWB
Facility	SEC.07-T10N-R57W		

REPORT SETUP INFORMATION

Projection System	NAD83 / Lambert Colorado SP, Northern Zone (501), US feet	Software System	WellArchitect® 5.0
North Reference	True	User	Wagnjam
Scale	1.000012	Report Generated	7/21/2016 at 9:13:20 AM
Convergence at slot	1.11° East	Database/Source file	WA_DEN_Denver_Defn/HORSETAIL_#07H-1814_AWP.xml

WELLPATH LOCATION

	Local coordinates		Grid coordinates		Geographic coordinates	
	North[ft]	East[ft]	Easting[US ft]	Northing[US ft]	Latitude	Longitude
Slot Location	-23.15	2473.66	3473743.83	1558371.97	40°51'12.780"N	103°47'14.800"W
Facility Reference Pt			3471270.16	1558347.59	40°51'13.010"N	103°47'46.990"W
Field Reference Pt			3471270.16	1558347.59	40°51'13.010"N	103°47'46.990"W

WELLPATH DATUM

Calculation method	Minimum curvature	UNIT 406 (21') (RKB) to Facility Vertical Datum	4933.00ft
Horizontal Reference Pt	Slot	UNIT 406 (21') (RKB) to Mean Sea Level	4933.00ft
Vertical Reference Pt	UNIT 406 (21') (RKB)	UNIT 406 (21') (RKB) to Mud Line at Slot (SLOT#22 HORSETAIL #07H-1814 (2636'FNL & 598'FEL SEC 7))	4933.00ft
MD Reference Pt	UNIT 406 (21') (RKB)	Section Origin	N 0.00, E 0.00 ft
Field Vertical Reference	Mean Sea Level	Section Azimuth	180.73°



Actual Wellpath Report

HORSETAIL #07H-1814 AWP
Page 2 of 9



REFERENCE WELLPATH IDENTIFICATION

Operator	WHITING OIL & GAS CORPORATION	Slot	SLOT#22 HORSETAIL #07H-1814 (2636'FNL & 598'FEL SEC 7)
Area	COLORADO	Well	HORSETAIL #07H-1814
Field	WELD COUNTY	Wellbore	HORSETAIL #07H-1814 AWP
Facility	SEC.07-T10N-R57W		

WELLPATH DATA (152 stations) † = interpolated/extrapolated station

MD (ft)	Inclination (°)	Azimuth (°)	TVD (ft)	Vert Sect (ft)	North (ft)	East (ft)	DLS (°/100ft)	Comments
0.00†	0.000	61.570	0.00	0.00	0.00	0.00	0.00	
21.00	0.000	61.570	21.00	0.00	0.00	0.00	0.00	
239.00	0.600	61.570	239.00	-0.56	0.54	1.00	0.28	
330.00	2.450	347.140	329.96	-2.68	2.67	0.99	2.59	
421.00	4.270	348.820	420.80	-7.89	7.89	-0.10	2.00	
513.00	6.180	345.140	512.42	-16.01	16.03	-2.03	2.11	
605.00	6.920	344.800	603.82	-26.11	26.17	-4.76	0.81	
696.00	7.010	346.090	694.15	-36.75	36.85	-7.53	0.20	
787.00	6.710	343.460	784.49	-47.20	47.34	-10.38	0.48	
878.00	6.740	342.340	874.87	-57.34	57.52	-13.51	0.15	
970.00	5.980	339.780	966.30	-66.94	67.16	-16.81	0.88	
1061.00	5.830	337.940	1056.82	-75.63	75.89	-20.18	0.27	
1153.00	5.420	336.120	1148.38	-83.89	84.20	-23.69	0.49	
1244.00	6.510	339.400	1238.88	-92.60	92.96	-27.25	1.25	
1334.00	7.760	347.360	1328.19	-103.27	103.66	-30.37	1.77	
1426.00	7.330	347.560	1419.39	-115.02	115.45	-33.00	0.47	
1518.00	7.120	343.810	1510.66	-126.19	126.66	-35.85	0.56	
1610.00	7.080	345.360	1601.95	-137.11	137.62	-38.87	0.21	
1702.00	7.160	344.030	1693.24	-148.07	148.62	-41.88	0.20	
1793.00	6.190	343.070	1783.63	-158.18	158.76	-44.87	1.07	
1884.00	6.240	339.240	1874.09	-167.46	168.08	-48.05	0.46	
1975.00	7.050	335.350	1964.48	-177.10	177.78	-52.14	1.02	
2125.00	5.980	328.220	2113.51	-192.01	192.79	-60.09	0.89	
2219.00	6.900	343.250	2206.92	-201.53	202.36	-64.30	2.03	
2313.00	6.980	342.970	2300.24	-212.35	213.23	-67.60	0.09	
2407.00	7.170	342.360	2393.52	-223.36	224.28	-71.05	0.22	
2502.00	6.910	342.680	2487.80	-234.42	235.39	-74.55	0.28	
2596.00	6.770	344.510	2581.13	-245.11	246.12	-77.71	0.28	
2690.00	6.880	343.330	2674.47	-255.81	256.86	-80.80	0.19	
2785.00	6.700	342.470	2768.80	-266.50	267.59	-84.11	0.22	



Actual Wellpath Report

HORSETAIL #07H-1814 AWP
Page 3 of 9



REFERENCE WELLPATH IDENTIFICATION			
Operator	WHITING OIL & GAS CORPORATION	Slot	SLOT#22 HORSETAIL #07H-1814 (2636'FNL & 598'FEL SEC 7)
Area	COLORADO	Well	HORSETAIL #07H-1814
Field	WELD COUNTY	Wellbore	HORSETAIL #07H-1814 AWB
Facility	SEC.07-T10N-R57W		

WELLPATH DATA (152 stations)								
MD [ft]	Inclination [°]	Azimuth [°]	TVD [ft]	Vert Sect [ft]	North [ft]	East [ft]	DLS [°/100ft]	Comments
2879.00	6.830	343.450	2862.15	-277.04	278.18	-87.35	0.18	
2974.00	6.870	345.250	2956.47	-287.91	289.09	-90.41	0.23	
3068.00	6.770	344.360	3049.80	-298.65	299.86	-93.33	0.15	
3162.00	6.680	346.170	3143.16	-309.25	310.51	-96.13	0.24	
3256.00	6.360	345.360	3236.55	-319.57	320.85	-98.75	0.35	
3351.00	6.000	348.740	3331.00	-329.50	330.81	-101.05	0.54	
3445.00	6.950	349.900	3424.40	-339.89	341.23	-103.01	1.02	
3540.00	6.780	351.340	3518.72	-351.07	352.43	-104.86	0.25	
3634.00	6.910	350.150	3612.05	-362.10	363.49	-106.67	0.20	
3728.00	7.940	344.420	3705.26	-373.89	375.31	-109.38	1.35	
3822.00	7.590	343.970	3798.40	-386.06	387.53	-112.83	0.38	
3917.00	7.350	343.470	3892.59	-397.87	399.39	-116.30	0.26	
4011.00	7.310	344.400	3985.82	-409.36	410.91	-119.61	0.13	
4105.00	7.550	343.700	4079.03	-421.00	422.60	-122.96	0.27	
4200.00	7.140	341.400	4173.25	-432.54	434.19	-126.59	0.53	
4294.00	6.630	335.910	4266.58	-442.98	444.68	-130.67	0.89	
4388.00	6.170	332.350	4359.99	-452.34	454.11	-135.23	0.65	
4482.00	5.530	333.660	4453.50	-460.82	462.64	-139.58	0.70	
4577.00	5.020	332.850	4548.10	-468.57	470.44	-143.51	0.54	
4671.00	4.810	332.610	4641.75	-475.68	477.60	-147.20	0.22	
4765.00	4.570	331.470	4735.44	-482.43	484.39	-150.80	0.27	
4859.00	4.110	337.430	4829.17	-488.79	490.79	-153.88	0.68	
4953.00	1.350	18.030	4923.06	-492.94	494.95	-154.83	3.41	
5047.00	1.090	24.870	5017.04	-494.81	496.82	-154.11	0.32	
5081.00	0.880	23.190	5051.03	-495.35	497.35	-153.88	0.62	
5175.00	3.910	158.080	5144.97	-493.06	495.04	-152.39	4.87	
5270.00	17.950	180.000	5238.03	-475.34	477.30	-151.18	15.15	
5363.00	28.340	180.830	5323.43	-438.83	440.80	-151.50	11.18	
5457.00	32.900	177.190	5404.31	-391.01	392.97	-150.57	5.23	
5551.00	33.690	177.310	5482.88	-339.51	341.42	-148.10	0.84	



Actual Wellpath Report

HORSETAIL #07H-1814 AWP
Page 4 of 9



REFERENCE WELLPATH IDENTIFICATION

Operator	WHITING OIL & GAS CORPORATION	Slot	SLOT#22 HORSETAIL #07H-1814 (2636'FNL & 598'FEL SEC 7)
Area	COLORADO	Well	HORSETAIL #07H-1814
Field	WELD COUNTY	Wellbore	HORSETAIL #07H-1814 AWP
Facility	SEC.07-T10N-R57W		

WELLPATH DATA (152 stations) † = interpolated/extrapolated station

MD [ft]	Inclination [°]	Azimuth [°]	TVD [ft]	Vert Sect [ft]	North [ft]	East [ft]	DLS [°/100ft]	Comments
5646.00	38.660	179.030	5559.54	-283.51	285.40	-146.36	5.34	
5739.00	50.880	180.700	5625.45	-218.15	220.03	-146.30	13.20	
5834.00	58.750	182.390	5680.15	-140.58	142.48	-148.45	8.41	
5928.00	64.210	182.060	5725.01	-58.04	59.98	-151.65	5.82	
6022.00	67.620	179.190	5763.37	27.75	-25.80	-152.56	4.57	
6115.00	77.950	180.110	5790.86	116.44	-114.51	-152.04	11.15	
6126.00†	78.431	180.417	5793.11	127.21	-125.28	-152.09	5.15	CROSS 100' SETBACK (2559'FSL & 750'FEL SEC 7)
6168.00†	80.271	181.578	5800.87	168.48	-166.55	-152.81	5.15	BOTTOM MARKER JOINT (2518'FSL & 751' FEL SEC 7)
6209.00	82.070	182.700	5807.17	208.98	-207.03	-154.32	5.15	
6303.00	87.610	181.470	5815.62	302.54	-300.55	-157.72	6.04	
6397.00	90.300	181.140	5817.33	396.51	-394.50	-159.86	2.88	
6491.00	89.540	179.180	5817.46	490.50	-488.50	-160.12	2.24	
6585.00	89.630	178.350	5818.14	584.44	-582.47	-158.10	0.89	
6680.00	89.410	177.770	5818.94	679.33	-677.41	-154.88	0.65	
6774.00	87.160	178.040	5821.75	773.17	-771.30	-151.44	2.41	
6868.00	87.500	178.180	5826.13	866.97	-865.15	-148.35	0.39	
6962.00	88.170	177.640	5829.68	960.79	-959.02	-144.92	0.92	
7056.00	88.790	177.540	5832.18	1054.61	-1052.90	-140.97	0.67	
7150.00	90.270	178.070	5832.95	1148.49	-1146.83	-137.37	1.67	
7244.00	91.190	178.200	5831.75	1242.38	-1240.77	-134.31	0.99	
7338.00	89.810	176.860	5830.93	1336.23	-1334.67	-130.26	2.05	
7432.00	88.370	179.920	5832.42	1430.12	-1428.61	-127.62	3.60	
7527.00	88.520	180.090	5835.00	1525.08	-1523.58	-127.63	0.24	
7622.00	89.170	180.120	5836.91	1620.05	-1618.56	-127.80	0.68	
7716.00	89.540	179.440	5837.97	1714.03	-1712.55	-127.44	0.82	
7810.00	86.890	178.940	5840.90	1807.95	-1806.48	-126.11	2.87	
7903.00	86.920	178.230	5845.92	1900.74	-1899.32	-123.82	0.76	
7998.00	86.680	177.460	5851.22	1995.48	-1994.10	-120.25	0.85	
8092.00	89.830	180.020	5854.09	2089.36	-2088.02	-118.19	4.32	
8186.00	90.380	181.030	5853.92	2183.35	-2182.01	-119.05	1.22	



Actual Wellpath Report

HORSETAIL #07H-1814 AWP
Page 5 of 9



REFERENCE WELLPATH IDENTIFICATION			
Operator	WHITING OIL & GAS CORPORATION	Slot	SLOT#22 HORSETAIL #07H-1814 (2636'FNL & 598'FEL SEC 7)
Area	COLORADO	Well	HORSETAIL #07H-1814
Field	WELD COUNTY	Wellbore	HORSETAIL #07H-1814 AWP
Facility	SEC.07-T10N-R57W		

WELLPATH DATA (152 stations)								
MD [ft]	Inclination [°]	Azimuth [°]	TVD [ft]	Vert Sect [ft]	North [ft]	East [ft]	DLS [°/100ft]	Comments
8280.00	90.750	180.810	5852.99	2277.35	-2276.00	-120.56	0.46	
8374.00	90.810	180.220	5851.71	2371.34	-2369.98	-121.41	0.63	
8469.00	91.700	180.210	5849.63	2466.31	-2464.96	-121.76	0.94	
8563.00	90.190	179.300	5848.08	2560.28	-2558.94	-121.36	1.88	
8658.00	90.710	178.640	5847.33	2655.23	-2653.92	-119.65	0.88	
8752.00	92.040	181.100	5845.08	2749.18	-2747.88	-119.44	2.97	
8846.00	89.330	180.360	5843.95	2843.17	-2841.86	-120.64	2.99	
8941.00	89.480	180.040	5844.94	2938.16	-2936.86	-120.97	0.37	
9032.00	90.340	180.410	5845.08	3029.15	-3027.85	-121.32	1.03	
9123.00	91.050	179.690	5843.98	3120.14	-3118.85	-121.40	1.11	
9215.00	92.040	179.560	5841.50	3212.09	-3210.81	-120.80	1.09	
9306.00	93.610	179.410	5837.01	3302.95	-3301.69	-119.99	1.73	
9398.00	91.910	180.240	5832.58	3394.83	-3393.58	-119.71	2.06	
9489.00	89.940	179.610	5831.11	3485.81	-3484.56	-119.59	2.27	
9580.00	91.110	179.630	5830.28	3576.78	-3575.56	-118.98	1.29	
9672.00	90.710	179.890	5828.82	3668.76	-3667.54	-118.60	0.52	
9762.00	92.190	179.810	5826.54	3758.72	-3757.51	-118.36	1.65	
9854.00	89.380	179.610	5825.28	3850.68	-3849.49	-117.90	3.06	
9946.00	90.120	179.200	5825.68	3942.66	-3941.49	-116.94	0.92	
10037.00	91.480	179.760	5824.41	4033.62	-4032.47	-116.11	1.62	
10128.00	90.000	179.150	5823.24	4124.59	-4123.46	-115.25	1.76	
10219.00	90.150	178.790	5823.12	4215.55	-4214.44	-113.61	0.43	
10311.00	90.710	178.940	5822.43	4307.50	-4306.42	-111.79	0.63	
10402.00	90.950	178.680	5821.11	4398.44	-4397.39	-109.90	0.39	
10494.00	91.260	178.590	5819.33	4490.36	-4489.35	-107.71	0.35	
10586.00	90.370	181.390	5818.03	4582.33	-4581.33	-107.69	3.19	
10677.00	90.770	180.720	5817.12	4673.32	-4672.31	-109.37	0.86	
10769.00	91.080	180.370	5815.63	4765.31	-4764.29	-110.25	0.51	
10860.00	92.430	180.140	5812.85	4856.26	-4855.25	-110.65	1.50	
10954.00	90.730	179.900	5810.26	4950.22	-4949.21	-110.68	1.83	



Actual Wellpath Report
HORSETAIL #07H-1814 AWP
 Page 6 of 9



REFERENCE WELLPATH IDENTIFICATION			
Operator	WHITING OIL & GAS CORPORATION	Slot	SLOT#22 HORSETAIL #07H-1814 (2636'FNL & 598'FEL SEC 7)
Area	COLORADO	Well	HORSETAIL #07H-1814
Field	WELD COUNTY	Wellbore	HORSETAIL #07H-1814 AWB
Facility	SEC.07-T10N-R57W		

WELLPATH DATA (152 stations)								
MD [ft]	Inclination [°]	Azimuth [°]	TVD [ft]	Vert Sect [ft]	North [ft]	East [ft]	DLS [°/100ft]	Comments
11048.00	91.660	180.130	5808.30	5044.19	-5043.18	-110.71	1.02	
11142.00	93.160	180.060	5804.34	5138.10	-5137.10	-110.86	1.60	
11237.00	90.060	181.800	5801.67	5233.04	-5232.03	-112.41	3.74	
11331.00	91.320	181.720	5800.54	5327.02	-5325.98	-115.29	1.34	
11425.00	89.560	179.810	5799.82	5421.01	-5419.96	-116.55	2.76	
11520.00	90.920	179.810	5799.42	5515.99	-5514.96	-116.23	1.43	
11614.00	92.740	180.110	5796.42	5609.93	-5608.91	-116.17	1.96	
11708.00	90.890	179.800	5793.44	5703.87	-5702.85	-116.09	2.00	
11802.00	87.990	179.360	5794.36	5797.84	-5796.84	-115.40	3.12	
11896.00	88.550	178.850	5797.20	5891.76	-5890.78	-113.94	0.81	
11990.00	89.010	178.950	5799.20	5985.69	-5984.74	-112.13	0.50	
12084.00	89.100	177.850	5800.75	6079.59	-6078.69	-109.51	1.17	
12178.00	89.160	178.010	5802.18	6173.47	-6172.62	-106.11	0.18	
12273.00	89.500	177.700	5803.29	6268.34	-6267.55	-102.56	0.48	
12367.00	89.160	177.700	5804.39	6362.21	-6361.46	-98.78	0.36	
12462.00	90.090	179.230	5805.01	6457.13	-6456.42	-96.24	1.88	
12556.00	90.180	178.620	5804.79	6551.08	-6550.41	-94.48	0.66	
12651.00	91.290	179.170	5803.57	6646.02	-6645.38	-92.64	1.30	
12745.00	91.750	179.110	5801.08	6739.95	-6739.34	-91.23	0.49	
12839.00	89.160	179.450	5800.33	6833.91	-6833.32	-90.05	2.78	
12934.00	90.150	179.170	5800.90	6928.88	-6928.31	-88.91	1.08	
13028.00	91.010	179.710	5799.95	7022.85	-7022.30	-87.99	1.08	
13122.00	92.090	179.510	5797.41	7116.79	-7116.26	-87.35	1.17	
13216.00	91.910	181.250	5794.13	7210.73	-7210.20	-87.97	1.86	
13311.00	89.260	181.890	5793.16	7305.71	-7305.15	-90.58	2.87	
13405.00	90.030	181.590	5793.74	7399.69	-7399.10	-93.43	0.88	
13498.00	88.550	180.890	5794.89	7492.68	-7492.07	-95.44	1.76	
13592.00	89.900	181.320	5796.16	7586.66	-7586.04	-97.26	1.51	
13686.00	91.230	181.090	5795.24	7680.65	-7680.01	-99.23	1.44	
13780.00	89.480	181.690	5794.66	7774.64	-7773.98	-101.51	1.97	



Actual Wellpath Report

HORSETAIL #07H-1814 AWP

Page 7 of 9



REFERENCE WELLPATH IDENTIFICATION			
Operator	WHITING OIL & GAS CORPORATION	Slot	SLOT#22 HORSETAIL #07H-1814 (2636'FNL & 598'FEL SEC 7)
Area	COLORADO	Well	HORSETAIL #07H-1814
Field	WELD COUNTY	Wellbore	HORSETAIL #07H-1814 AWB
Facility	SEC.07-T10N-R57W		

WELLPATH DATA (152 stations)									
MD [ft]	Inclination [°]	Azimuth [°]	TVD [ft]	Vert Sect [ft]	North [ft]	East [ft]	DLS [°/100ft]	Comments	
13897.00	90.550	180.570	5794.62	7891.63	-7890.95	-103.82	1.32	LAST BHI MWD (102'FSL & 813'FEL SEC 18)	
13945.00	90.550	180.570	5794.16	7939.63	-7938.95	-104.30	0.00	PROJ TO BIT (54'FSL & 814'FEL SEC 18)	

HOLE & CASING SECTIONS - Ref Wellbore: HORSETAIL #07H-1814 AWB Ref Wellpath: HORSETAIL #07H-1814 AWP											
String/Diameter	Start MD [ft]	End MD [ft]	Interval [ft]	Start TVD [ft]	End TVD [ft]	Start N/S [ft]	Start E/W [ft]	End N/S [ft]	End E/W [ft]		
16in Conductor	21.00	101.00	80.00	21.00	101.00	0.00	0.00	0.07	0.14		
13.5in Open Hole	21.00	2085.00	2064.00	21.00	2073.74	0.00	0.00	189.13	-57.92		
8.5in Open Hole	2085.00	13945.00	11860.00	2073.74	5794.16	189.13	-57.92	-7938.95	-104.30		
9.625in Casing Surface	21.00	2072.00	2051.00	21.00	2060.82	0.00	0.00	187.88	-57.22		
5.5in Casing Production	21.00	13945.00	13924.00	21.00	5794.16	0.00	0.00	-7938.95	-104.30		



Actual Wellpath Report

HORSETAIL #07H-1814 AWP
Page 8 of 9



REFERENCE WELLPATH IDENTIFICATION			
Operator	WHITING OIL & GAS CORPORATION	Slot	SLOT#22 HORSETAIL #07H-1814 (2636'FNL & 598'FEL SEC 7)
Area	COLORADO	Well	HORSETAIL #07H-1814
Field	WELD COUNTY	Wellbore	HORSETAIL #07H-1814 AWB
Facility	SEC.07-T10N-R57W		

TARGETS								
Name	TVD [ft]	North [ft]	East [ft]	Grid East [US ft]	Grid North [US ft]	Latitude	Longitude	Shape
SEC.07-T10N-R57W	13.00	23.40	-2473.66	3471270.16	1558347.59	40°51'13.010"N	103°47'46.990"W	polygon
SEC.18-T10N-R57W	13.00	23.40	-2473.66	3471270.16	1558347.59	40°51'13.010"N	103°47'46.990"W	polygon
HORSETAIL #07H-1814 BHL REV-2 (NIO B, 100'FSL & 810'FEL SEC 18)	5815.00	-7893.01	-100.70	3473795.57	1550478.41	40°49'54.790"N	103°47'16.110"W	point
HORSETAIL #07H-1814 BHL REV-1 (NIO B, 100'FSL & 810'FEL SEC 18)	5821.00	-7893.01	-100.70	3473795.57	1550478.41	40°49'54.790"N	103°47'16.110"W	point
HORSETAIL FED #07F SOUTH HARDLINES 100'N 1/2 SECTION, 100' S/E/W	5853.00	23.40	-2473.66	3471270.16	1558347.59	40°51'13.010"N	103°47'46.990"W	polygon

WELLPATH COMPOSITION - Ref Wellbore: HORSETAIL #07H-1814 AWB Ref Wellpath: HORSETAIL #07H-1814 AWP					
Start MD [ft]	End MD [ft]	Positional Uncertainty Model	Log Name/Comment	Wellbore	
21.00	1975.00	Custom BHI NaviTrak (IFR1, Standard Rotating, SAG) (Rockies 0.03Gt model)	BHI/INTEQ NAVITRAK MWD ROCKIES GT, SURCON IFR SAG 13 1/2"<239-1975>	HORSETAIL #07H-1814 AWB	
1975.00	13897.00	Custom BHI NaviTrak (IFR1, Standard Rotating, SAG) (Rockies 0.03Gt model)	BHI/INTEQ NAVITRAK MWD ROCKIES GT, SURCON IRF SAG 8 1/2" MONO <2125-13897>	HORSETAIL #07H-1814 AWB	
13897.00	13945.00	Blind Drilling (std)	Projection to bit	HORSETAIL #07H-1814 AWB	



Actual Wellpath Report

HORSETAIL #07H-1814 AWP

Page 9 of 9



REFERENCE WELLPATH IDENTIFICATION

Operator	WHITING OIL & GAS CORPORATION	Slot	SLOT#22 HORSETAIL #07H-1814 (2636'FNL & 598'FEL SEC 7)
Area	COLORADO	Well	HORSETAIL #07H-1814
Field	WELD COUNTY	Wellbore	HORSETAIL #07H-1814 AWB
Facility	SEC.07-T10N-R57W		

WELLPATH COMMENTS

MD [ft]	Inclination [°]	Azimuth [°]	TVD [ft]	Comment
6126.00	78.431	180.417	5793.11	CROSS 100' SETBACK (2559'FSL & 750'FEL SEC 7)
6168.00	80.271	181.578	5800.87	BOTTOM MARKER JOINT (2518'FSL & 751' FEL SEC 7)
13897.00	90.550	180.570	5794.62	LAST BHI MWD (102'FSL & 813'FEL SEC 18)
13945.00	90.550	180.570	5794.16	PROJ TO BIT (54'FSL & 814'FEL SEC 18)