

## Follow-up Interim Reclamation Inspection: Overview



**Photo 1.** Google Earth aerial imagery illustrating locations of three (3) 100-foot transect lines used to measure seedling germination density (green lines), red circles indicate approximate size and location of Canada thistle (*Cirsium arvense*) patches, and orange boxes indicate approximate locations with little to no plant growth. Field bindweed (*Convolvulus arvensis*) dominated throughout interim area.



## Follow-up Interim Reclamation Inspection



**Photo 2.** Photo taken from the eastern location, facing South. Field bindweed (white blooming flower) dominates vegetative plant cover throughout interim area, affecting desirable seedling germination. Sparse desirable seedling germination was observed throughout interim area.



## Follow-up Interim Reclamation Inspection



**Photo 3.** Photo taken from the eastern location, facing North. Field bindweed (white blooming flower) dominates vegetative plant cover throughout interim area. Sparse desirable seedling germination was observed throughout interim area.



## Follow-up Interim Reclamation Inspection



**Photo 4.** Photo taken from the southeastern location, facing South. Canada thistle (*Cirsium arvense*), List B Colorado perennial noxious weed species, outlined in the red circle needs to be controlled.



## Follow-up Interim Reclamation Inspection



**Photo 5.** Photo taken from the north central location, facing North. Field bindweed (white blooming flower) dominates vegetative plant cover throughout interim area. Little to no germination of desirable plant species.



## Follow-up Interim Reclamation Inspection



**Photo 6.** Photo taken from the northwestern location, facing North. Patch size of 12'x12' of desirable seedling germination but still lacks a sufficient seedling density.



## Follow-up Interim Reclamation Inspection



**COLORADO**  
Oil & Gas Conservation  
Commission  
Department of Natural Resources



**Photo 7.** Photo taken from the western location, facing South. Field bindweed (white blooming flower) dominates vegetative plant cover, affecting desirable seedling germination.



## Follow-up Interim Reclamation Inspection



**Photo 8.** Photo taken from the northwestern location, facing West. Canada thistle (*Cirsium arvense*), List B Colorado perennial noxious weed species, outlined in the red circle needs to be controlled.



## Follow-up Interim Reclamation Inspection



**Photo 9.** Photo taken from the western location, facing West. Little to no germination of desirable plant species of any kind.



## Follow-up Interim Reclamation Inspection



**Photo 10.** Photo taken from the northwestern location, facing North. Little to no germination of desirable plant species of any kind.



## Follow-up Interim Reclamation Inspection



**COLORADO**  
Oil & Gas Conservation  
Commission  
Department of Natural Resources



**Photo 11.** Photo taken from the northern location, facing West. Field bindweed (white blooming flower) dominates vegetative plant cover throughout interim area. Little to no germination of desirable plant species along the northern boundary.



## Follow-up Interim Reclamation Inspection



**Photo 12.** Photo taken from start of Transect #1, facing South. Field bindweed (white blooming flower) dominated vegetative plant cover throughout quadrat measurements.



## Follow-up Interim Reclamation Inspection



**Photo 13.** Photo taken from the 20-foot mark, right side of Transect #1, with no seedling germination observed. Field bindweed (white blooming flower) only observed plant inside quadrat.



## Follow-up Interim Reclamation Inspection



**COLORADO**  
Oil & Gas Conservation  
Commission  
Department of Natural Resources



**Photo 14.** Photo taken from the 20-foot mark, left side of Transect #1, with one (1) seedling germination observed with field bindweed inside the quadrat.



## Follow-up Interim Reclamation Inspection



**Photo 15.** Photo taken from the 70-foot mark, right side of Transect #1, with ten (10) seedling germinations observed inside quadrat.



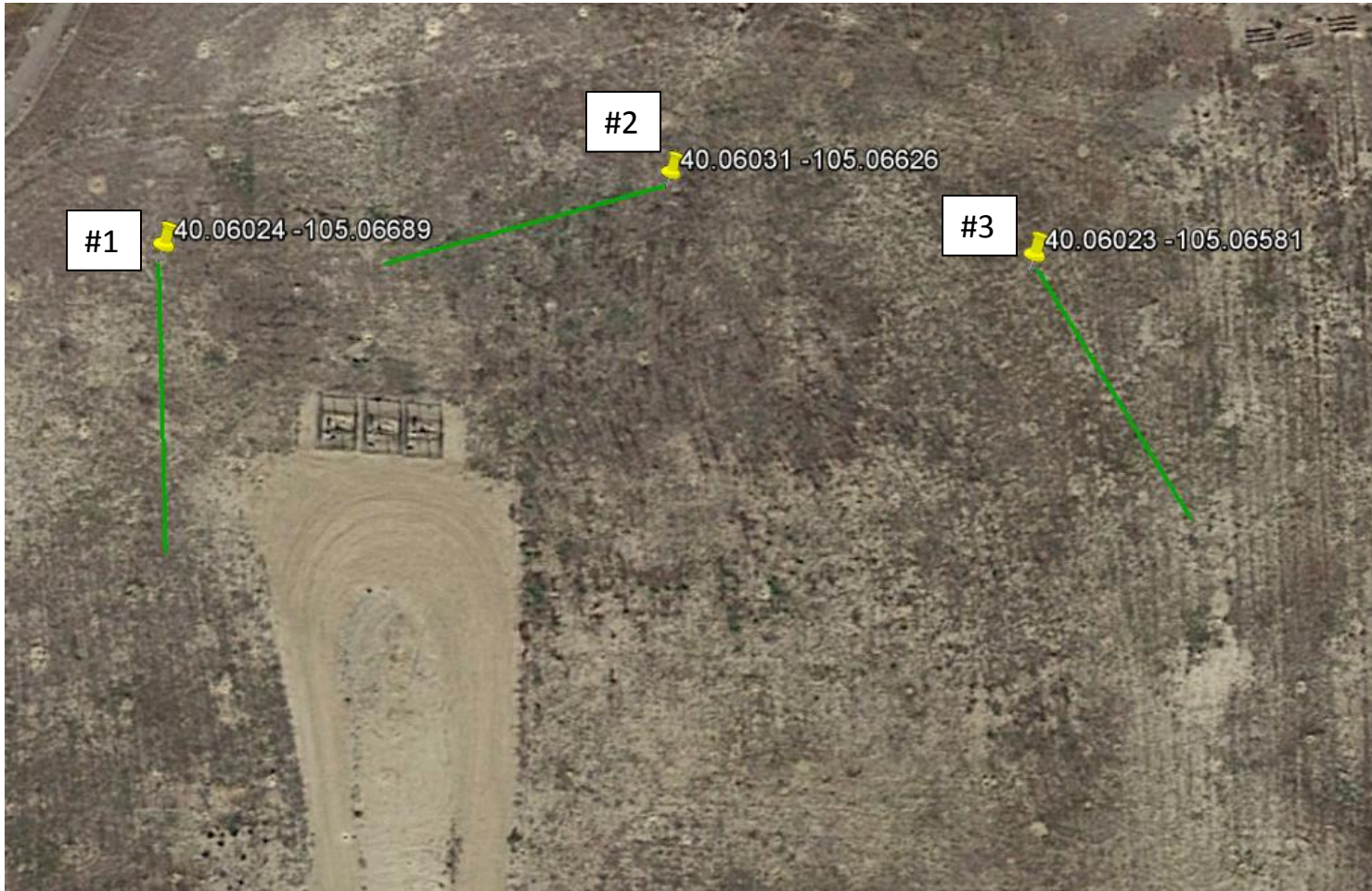
## Follow-up Interim Reclamation Inspection



**Photo 16.** Photo taken from the 70-foot mark, left side of Transect #1, with nine (9) seedling germinations observed and field bindweed inside quadrat.



## Follow-up Interim Reclamation Inspection: Monitoring Transects



**Photo 17.** Aerial overview of monitoring transect locations with compass bearing information, and total desirable seedling counts for each 100-foot transect.

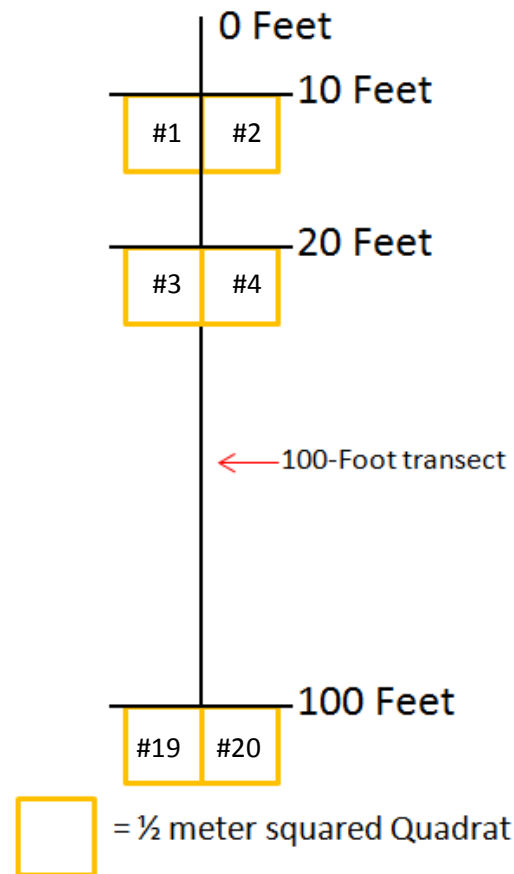
#1: 40.06024, -105.06689 @ 180°= 56 seedlings

#2: 40.06031, -105.06626 @ 250°= 4 seedlings

#3: 40.06023, -105.06581 @ 145°= 7 seedlings



## Diagram- Seedling Germination Sampling Methodology



**Photo 18.** Note- this is not to scale. Stretch 100-foot transect to the desired compass bearing. Lay 1/2 meter squared quadrat at the first 10-foot mark, either on the left or right side of the transect line (need to count seedling germination on both sides of the transect line). Conduct this measurement every 10 feet to the end of the 100-foot transect line, totaling 20 quadrat measurements. Refer to Photo 17 regarding the three transect locations and compass bearings.