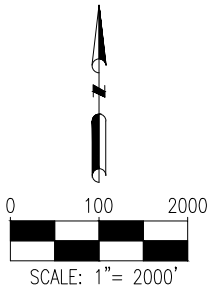
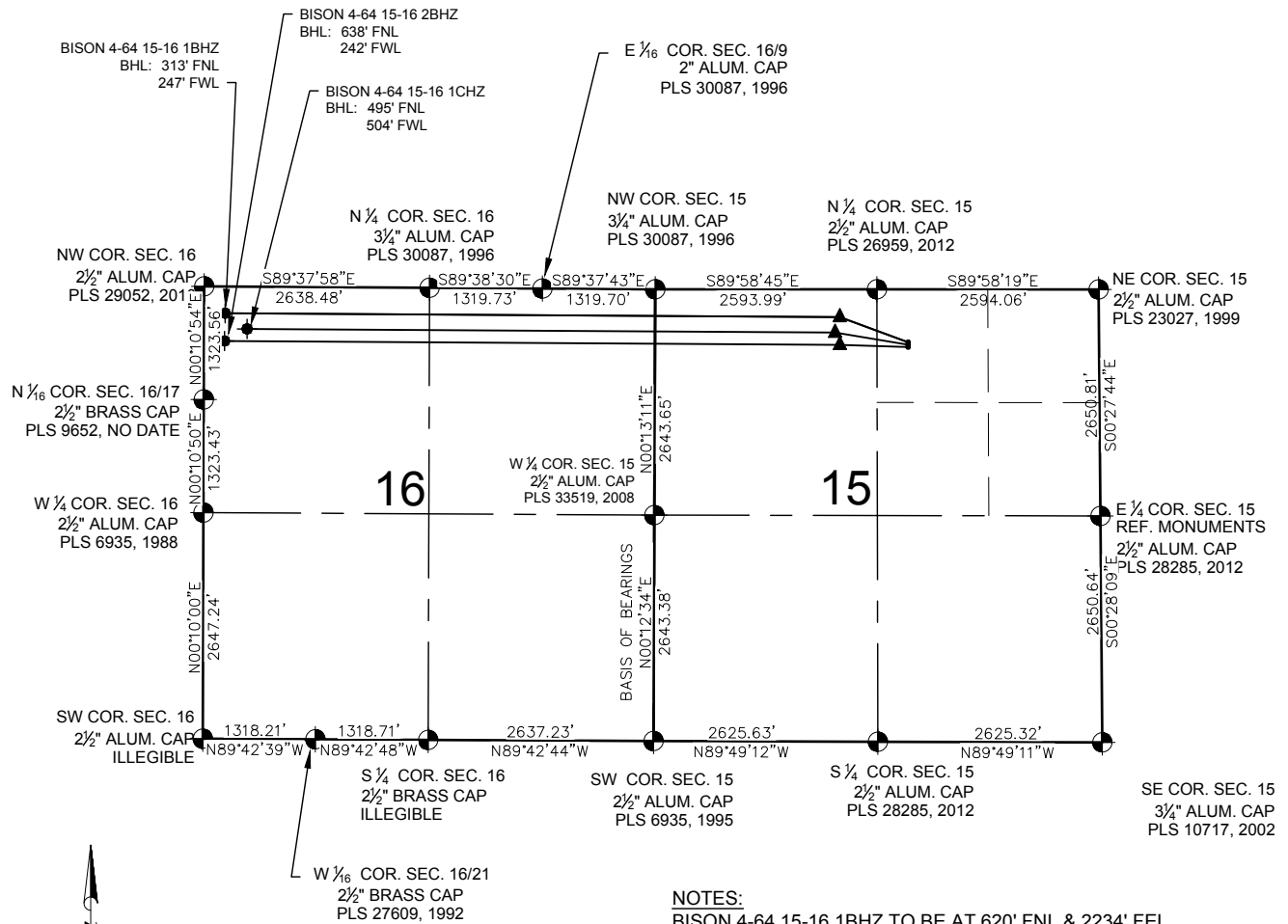


BISON 4-64 15-16 PAD MULTI-WELL PLAN



NOTES:

- BISON 4-64 15-16 1BHZ TO BE AT 620' FNL & 2234' FEL.
BOTTOM HOLE AT 313' FNL & 247' FWL, SEC. 16.
- BISON 4-64 15-16 1CHZ TO BE AT 648' FNL & 2234' FEL.
BOTTOM HOLE AT 495' FNL & 504' FWL, SEC. 16.
- BISON 4-64 15-16 2BHZ TO BE AT 676' FNL & 2235' FEL.
BOTTOM HOLE AT 638' FNL & 242' FWL, SEC. 16.

LEGEND

- = EXISTING MONUMENT
- = CALCULATED POSITION
- = PROPOSED WELL
- ◆ = EXISTING WELL
- ▲ = LANDING POINT
- LP = LANDING POINT
- BHL = BOTTOM HOLE LOCATION

NOTES:

1. THIS FIELD SURVEY CONFORMS TO THE MINIMUM STANDARDS SET BY THE C.O.G.C.C., RULE NO. 215
2. BEARINGS ARE BASED ON THE ASSUMPTION THAT THE WEST LINE OF THE SOUTHWEST QUARTER OF SECTION 15, BEARS N00°12'34"E BETWEEN THE MONUMENTS SHOWN HEREON.
3. GRID DISTANCES ARE SHOWN, AS GPS MEASURED IN THE FIELD, WITH TIES TO WELLS MEASURED PERPENDICULAR TO SECTION LINES. TO GET GROUND DISTANCES MULTIPLY THE SHOWN DISTANCE BY 1.000275824.
4. FIELD VERIFICATION OF MONUMENTS COMPLETED WITHIN 1 YEAR OF SIGNATURE DATE.

PREPARED BY:



FIELD DATE:
07-14-16

DRAWING DATE:
08-01-16

BY:
MLP

CHECKED BY:
CSG

SITE NAME:

BISON 4-64 15-16 PAD

SURFACE LOCATION:

NW 1/4 NE 1/4 SEC. 15, T4S, R64W, 6TH P.M.
ARAPAHOE COUNTY, COLORADO

PREPARED FOR:

