

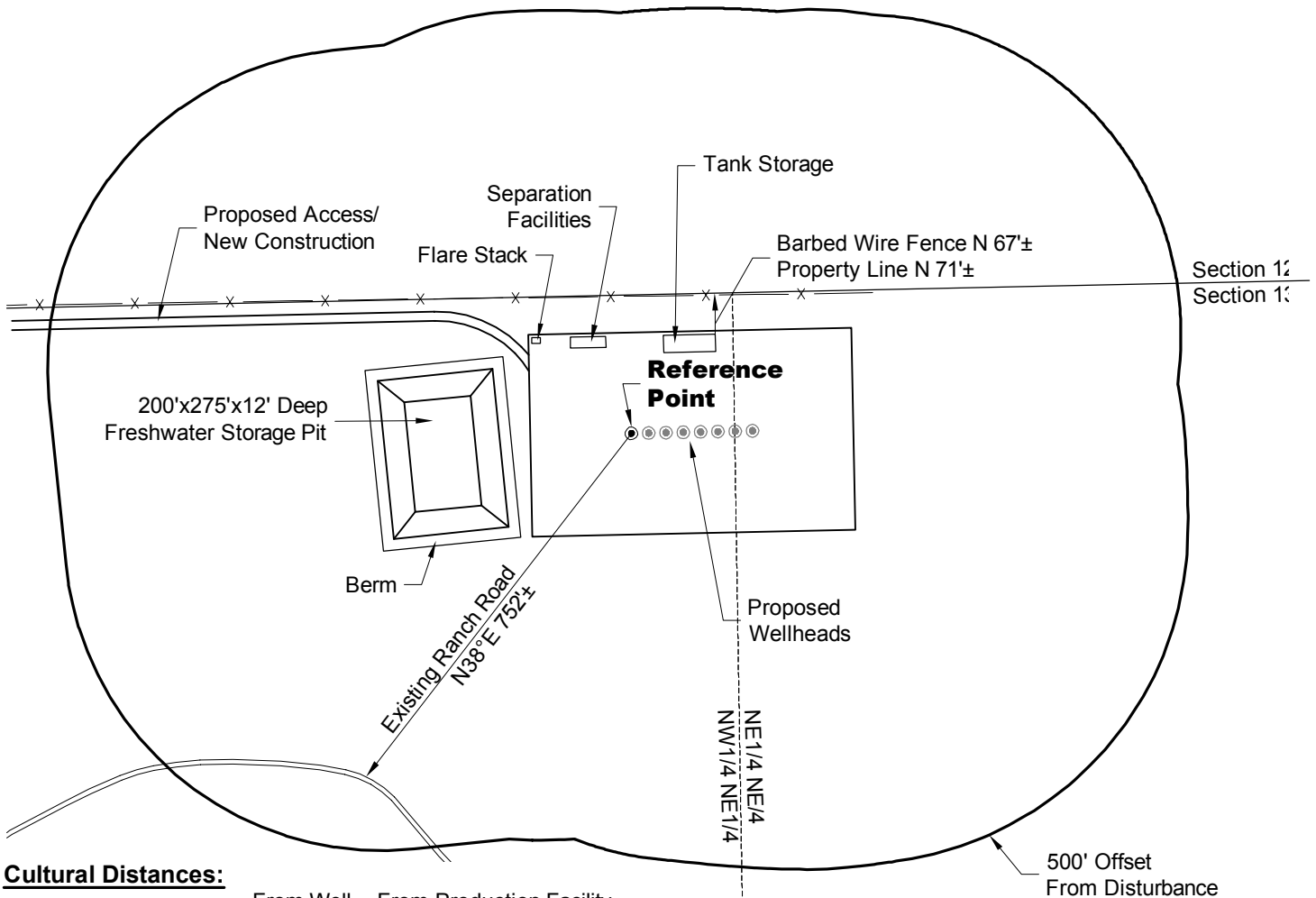
PLANT COMMUNITY:
DISTURBED GRASSLAND

SURFACE USE:
RANGELAND

LOCATION DRAWING

REFERENCE POINT

LATITUDE: 40.14494
LONGITUDE: -104.49577
FOOTAGE: 240 FNL 1498 FEL
GROUND ELEVATION: 4870.3
PDOP: 1.4 DATE: 9/30/2014
INSTRUMENT OPERATOR:
MARC WOODARD



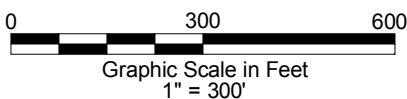
Cultural Distances:

	From Well	From Production Facility
Property Line	240'±	71'±
Public Road - WCR 59	3780'±	3617'±
Building	4059'±	3933'±
Railroad	1.9± Miles	1.9± Miles
Above Ground Utility	3309±	3158±

NOTE:
ALL PRODUCTION FACILITIES WILL BE ON PAD.

DISTURBANCE ACREAGE:
DRILLING PAD 7.1±
FRESHWATER STORAGE PIT 2.5±

12/23/14



LAND SURVEYING AND MAPPING
LAFAYETTE - WINTER PARK
Ph 303 666 0379 Fx 303 665 6320

RED HAWK PETROLEUM LLC
L.E. GERKIN 9H PAD

NW1/4 NE1/4 SECTION 13 T2N R64W
6th PM WELD COUNTY COLORADO