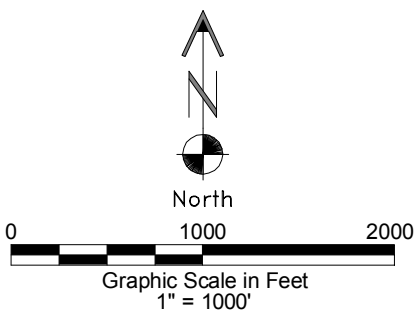
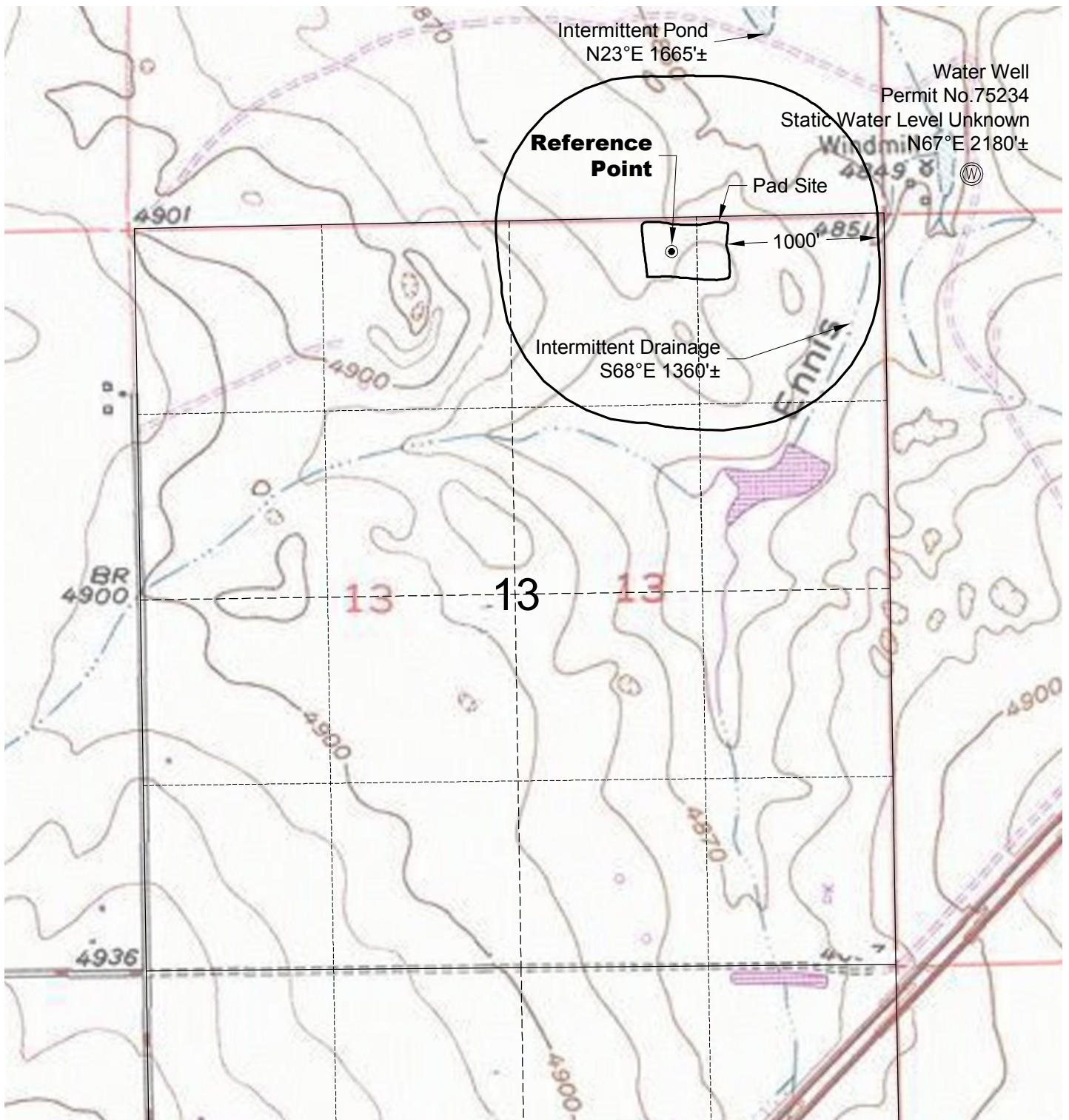


## HYDROLOGY MAP



2/11/15



**LAND SURVEYING AND MAPPING**  
**LAFAYETTE - WINTER PARK**  
**Ph 303 666 0379 Fx 303 665 6320**

**RED HAWK PETROLEUM LLC**  
**L.E. GERKIN 9H PAD**

NW1/4 NE1/4 SECTION 13 T2N R64W  
6th PM WELD COUNTY COLORADO