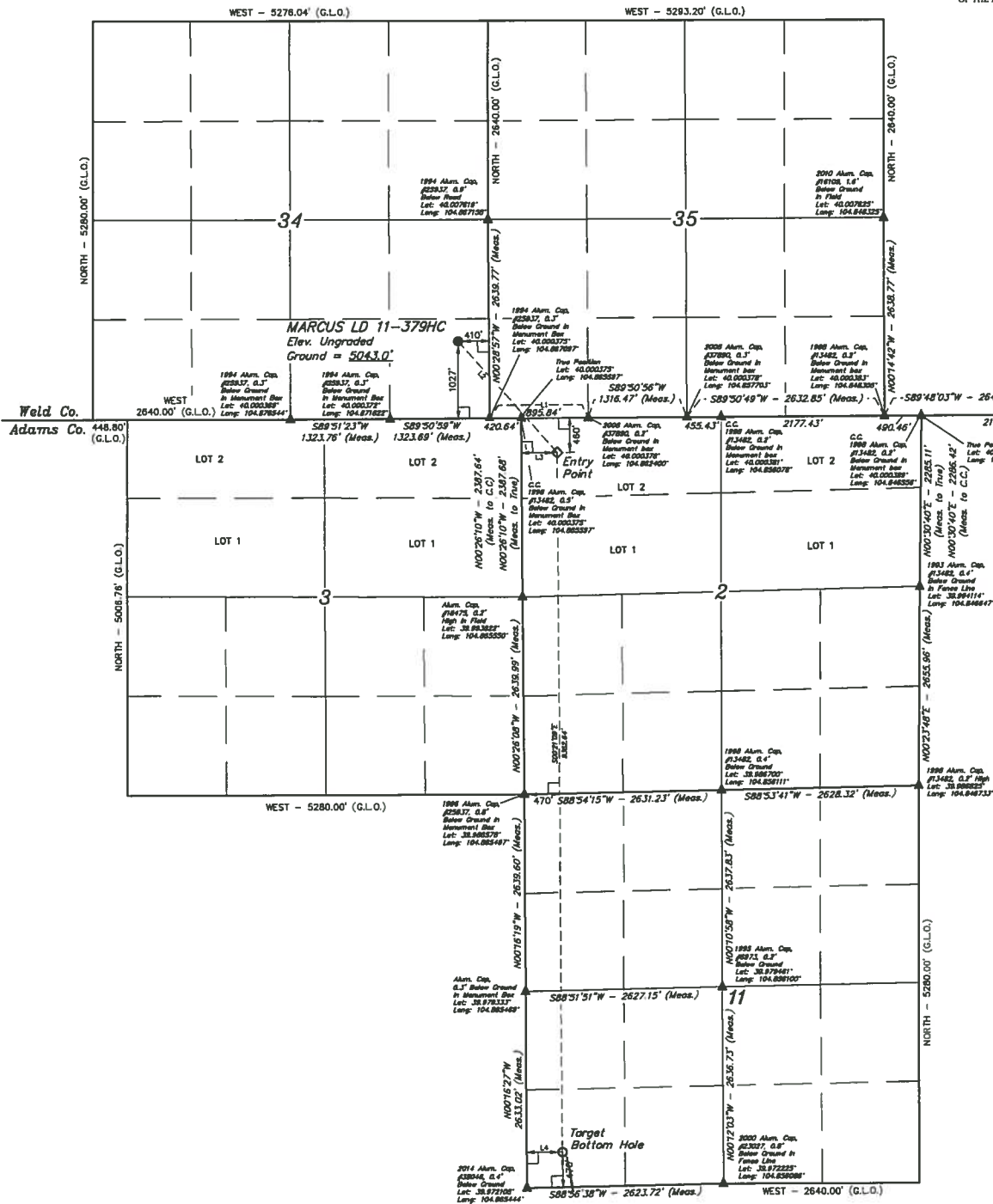


- LEGEND:
- 8" STABOL
 - PROPOSED WELLHEAD
 - EXIST. POINT
 - TARGET BOTTOM HOLE
 - ▲ SECTION CORNERS LOCATED

T1N, R67W, 6th P.M.



BASIS OF BEARINGS
BASIS OF ELEVATION
BENCHMARK JR. 53 5026 LOCATED IN THE SW 1/4 SE 1/4
OF SECTION 18, T1N, R68W, 6th P.M., TAKEN FROM 1988
PUBLISHED DATUM BY THE UNITED STATES DEPARTMENT
OF THE INTERIOR, GEOLOGICAL SURVEY AS BEING 5028 FEET



SECTION LINE TABLE		
LINE	DIRECTION	LENGTH
L1	S89°31'31\"	1318.48' (MEAS.)

LINE TABLE		
LINE	DIRECTION	LENGTH
L2	S41°38'29\"	1986.38'
L3	S89°33'30\"	478.64'
L4	S89°43'33\"	478.64'

370' FSL

CERTIFICATE OF REGISTRATION
NOTES OF ACTUAL SURVEYS MADE BY THE SURVEYOR
AND THAT THE SAME ARE TRUE AND CORRECT TO THE BEST
KNOWLEDGE AND BELIEF

GREAT WESTERN OIL & GAS COMPANY
MARCUS LD 11-379HC
SE 1/4 SE 1/4, SECTION 34, T1N, R67W, 6th P.M.
WELD COUNTY, COLORADO

UWEL, LLC
Corporate Office: 83 South 280 East
Vernal, UT 84078 • (435) 789-1817

SURVEYED BY: JARED CHRISTOPHER, J.C. DATE: 11-20-14
DRAWN BY: J.W. DATE DRAWN: 12-01-14
SCALE: 1" = 100'
WELL LOCATION PLAN

NAD 83 (TARGET BOTTOM HOLE)	NAD 83 (ENTRY POINT)	NAD 83 (SURFACE LOCATION)
LATITUDE = 39°52'23.31\"	LATITUDE = 39°52'23.31\"	LATITUDE = 39°52'23.31\"
LONGITUDE = 104°51'49.98\"	LONGITUDE = 104°51'49.98\"	LONGITUDE = 104°51'49.98\"
NAD 83 (TARGET BOTTOM HOLE)	NAD 83 (ENTRY POINT)	NAD 83 (SURFACE LOCATION)
LATITUDE = 39°52'23.31\"	LATITUDE = 39°52'23.31\"	LATITUDE = 39°52'23.31\"
LONGITUDE = 104°51'49.98\"	LONGITUDE = 104°51'49.98\"	LONGITUDE = 104°51'49.98\"