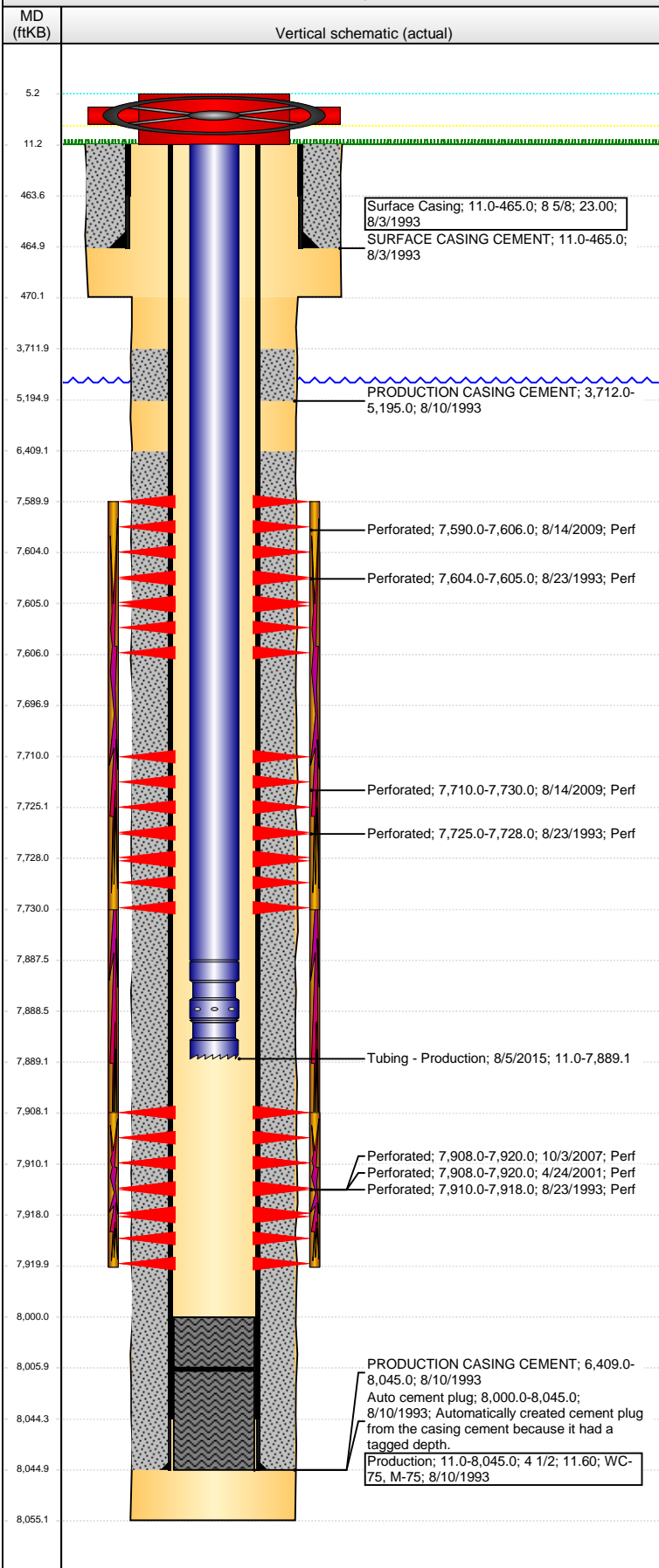


**Well Name: LOWER LATHAM 02-12G**

DEVIATED - ORIGINAL HOLE, 8/9/2016 7:52:52 AM



Well Header			
API	Business Unit	District	Well Config
05-123-17176	DJ BASIN	15	DEVIATED
Original KB Elevation (ft)	KB - GL / MSL (ftKB)	Spud Date	P & A Date
4,682	11.00	8/3/1993	

Comment

Directions To Well  
WCR 48 & WCR 47: NORTH 2/10, WEST INTO

Congressional Location					
Quarter 3	Quarter 4	Section	Township	TwNS Dir	Range
NW	SE	2	4	N	65
Range E/W Dir					
W					

Bottom Hole Location			
North-South Distance (ft)	From N or S Line	East-West Distance (ft)	From E or W Line
1,939.0	FSL	656.0	FWL

Plug Back Total Depths			
Date	Depth (ftKB)	Method	Com
8/11/1993	8,001.0	TAG	
1/18/1994	7,810.0	TAG	CO TO 7990
4/24/2001	7,666.0	TAG	
5/7/2001	7,945.0	TAG	
10/2/2007	7,916.0	TAG	CO TO 7990
11/6/2007	7,909.0	TAG	CO TO 7990
9/15/2009	8,000.0	TAG	CO TO 8000
8/25/2014	7,988.0	TAG	68' OF RAT HOLE
8/5/2015	8,006.0	TAG	PUSH CBP T/BOTTOM

Wellbore Sections			
Section Des	Size (in)	Act Top, MD (ftKB)	Act Btm, MD (ftKB)
SURFACE	12 1/4	11	470
PRODUCTION	7 7/8	470	8,055

Zone Statuses					
Zone Name	Status Date	Status	Fluid Type	Job	Prod Method
NIOBRARA	9/5/1993	PR	Gas	DRILLING/CO...	
NIOBRARA	9/11/2009	PR	Gas	RE-FRAC, 8/12...	
NIOBRARA	9/17/2009	PR	Gas	RE-FRAC, 8/12...	
NIOBRARA	8/26/2014	TA		HORIZONTAL...	
NIOBRARA	8/5/2015	PR		HORIZONTAL...	
CODELL	9/5/1993	PR	Gas	DRILLING/CO...	
CODELL	5/9/2001	PR	Gas	RE-FRAC, 5/3/...	
CODELL	12/8/2007	PR	Gas	TRI-FRAC, 10/...	
CODELL	8/13/2009	SI	Gas	RE-FRAC, 8/12...	
CODELL	9/17/2009	PR	Gas	RE-FRAC, 8/12...	
CODELL	8/26/2014	TA		HORIZONTAL...	
CODELL	8/5/2015	PR		HORIZONTAL...	
NIOBRARA-C...	8/26/2014	TA		HORIZONTAL...	

Casing Strings						
Surface Casing, 465.0ftKB						
Casing Description	Run Date	OD (in)	Wt/Len (l...)	Grade	Top, MD (ft...)	MD (ftKB)
Surface Casing	8/3/1993	8 5/8	23.00		11.0	465.0

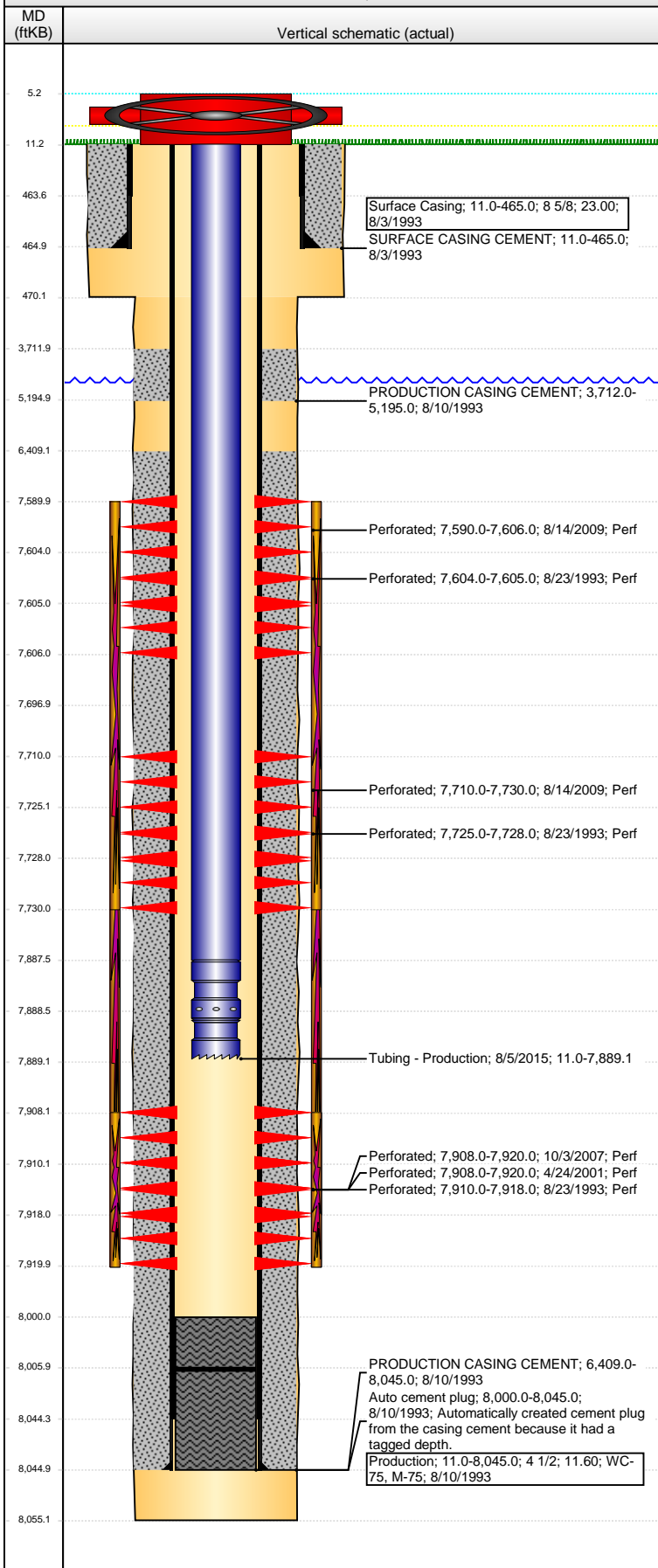
Production, 8,045.0ftKB						
Casing Description	Run Date	OD (in)	Wt/Len (l...)	Grade	Top, MD (ft...)	MD (ftKB)
Production	8/10/1993	4 1/2	11.60	M-75	11.0	8,045.0

Cement			
Description	Top Depth (ftKB)	Bottom Depth (ftKB)	
SURFACE CASING CEMENT	11.0	465.0	
PRODUCTION CASING CEMENT	3,712.0	5,195.0	
PRODUCTION CASING CEMENT	6,409.0	8,045.0	

Tubing Strings							
Tubing Description	Run Date	String...	ID (in)	Wt (lb/ft)	Grade	Len (ft)	Set De...
Tubing - Production	11/6/2007	2 3/8	1.995	4.70	J-55	7,883.00	
Tubing - Production	9/15/2009	2 3/8	1.995	4.70	J-55	7,885.56	

**Well Name: LOWER LATHAM 02-12G**

DEVIATED - ORIGINAL HOLE, 8/9/2016 7:52:55 AM



Tubing Strings							
Tubing Description	Run Date	String...	ID (in)	Wt (lb/ft)	Grade	Len (ft)	Set De...
Tubing	8/27/2014	2 3/8	1.995	4.70	J-55	6,964.91	
Tubing - Production	8/5/2015	2 3/8	1.995	4.70	J-55	7,878.06	

Tubing Components							
Item Des	OD (in)	Wt (lb/ft)	Grade	Jts	Len (ft)	Btm (ftKB)	Btm (TVD) (ftKB)
EUE 8rd Tubing	2 3/8	4.70	J-55	255	7,876.46	7,887.5	
Pump Seating Nipple	2 3/8	1.10		1	1.10	7,888.6	
Notched collar	2 3/8			1	0.50	7,889.1	

Perforation Data						
Zone	Bnch/St g	Entered Shot Total	Top (ftKB)	Btm (ftKB)	Date	
NIOBRARA, ORIGINAL HOLE	A	64	7,590.00	7,606.00	8/14/2009	
NIOBRARA, ORIGINAL HOLE	A	2	7,604.00	7,605.00	8/23/1993	
NIOBRARA, ORIGINAL HOLE	B	80	7,710.00	7,730.00	8/14/2009	
NIOBRARA, ORIGINAL HOLE	B	4	7,725.00	7,728.00	8/23/1993	
CODELL, ORIGINAL HOLE		48	7,908.00	7,920.00	4/24/2001	
CODELL, ORIGINAL HOLE		48	7,908.00	7,920.00	10/3/2007	
CODELL, ORIGINAL HOLE		9	7,910.00	7,918.00	8/23/1993	

Stimulations & Treatments		
Date	Zone	Primary Job Type
8/25/1993	NIOBRARA-CODELL, ORIGINAL HOLE	DRILLING/COMPLETION - ORIGINAL

Technical Result	Tech Result Details	Tech Result Note

Comment  
CDL/NIO LIMITED ENTRY FRAC

Date	Zone	Primary Job Type
5/3/2001	CODELL, ORIGINAL HOLE	RE-FRAC

Technical Result	Tech Result Details	Tech Result Note

Comment

Date	Zone	Primary Job Type
11/2/2007	CODELL, ORIGINAL HOLE	TRI-FRAC

Technical Result	Tech Result Details	Tech Result Note

Comment

Date	Zone	Primary Job Type
8/27/2009	NIOBRARA, ORIGINAL HOLE	RE-FRAC

Technical Result	Tech Result Details	Tech Result Note
Success	According to Plan	

Comment  
NIOBRARA RE-FRAC: 15% HCL BREAKDOWN PRE-ISIP (160 BBL) = 3372 PSI, 5-MIN = 2577 PSI. SLICKWATER PAD ISIP = 3867 PSI, 5-MIN = 3245 PSI. THE TREATMENT EXHIBITED A RELATIVELY FLAT PRESSURE RESPONSE. POST- ISIP = 3929 PSI, 5-MIN = 3672 PSI.

Other In Hole				
Run Date	Des	OD (in)	Top (ftKB)	Btm (ftKB)

Logs			
Date	Type	Top, MD (ftKB)	Btm, MD (ftKB)
8/10/1993	COMPENSATED GAMMA RAY	460.0	7,997.0
8/20/1993	CEMENT BOND	3,500.0	7,985.0
9/23/2013	GYRO	10.0	7,850.0