

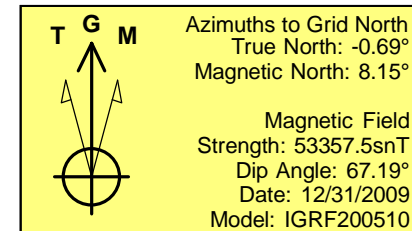
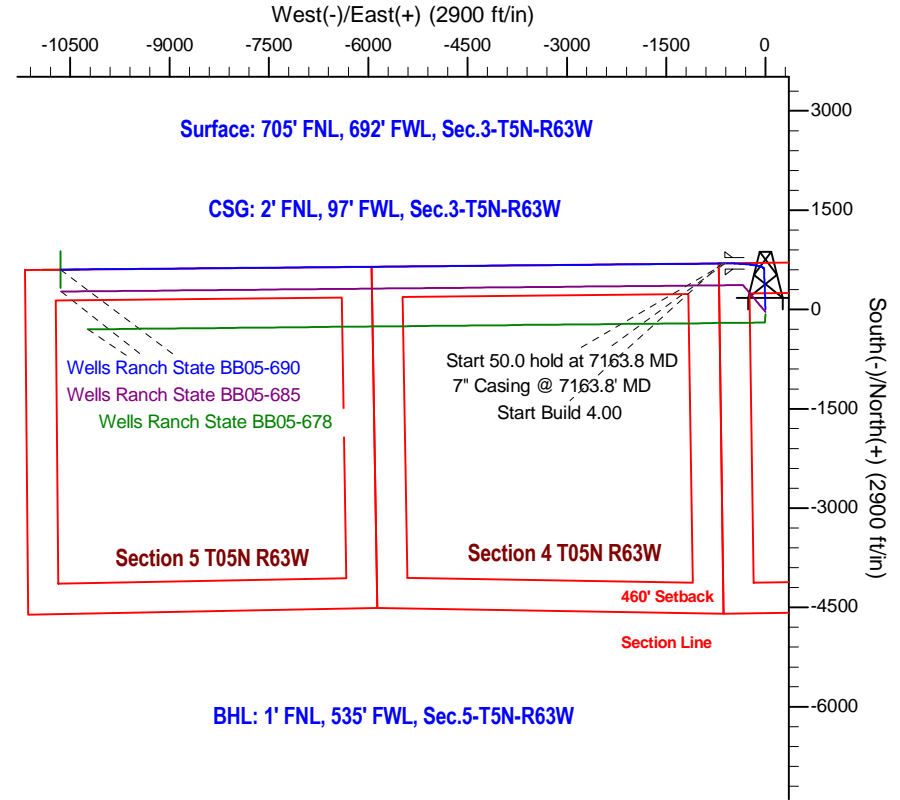
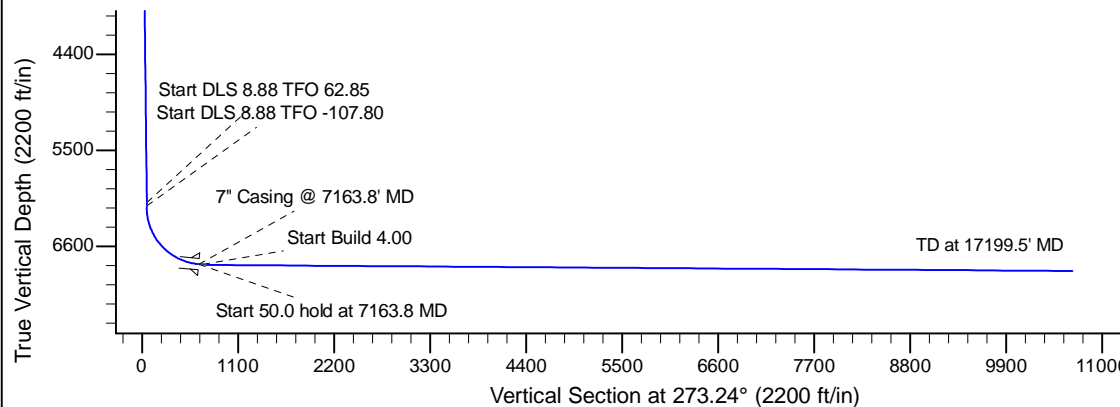
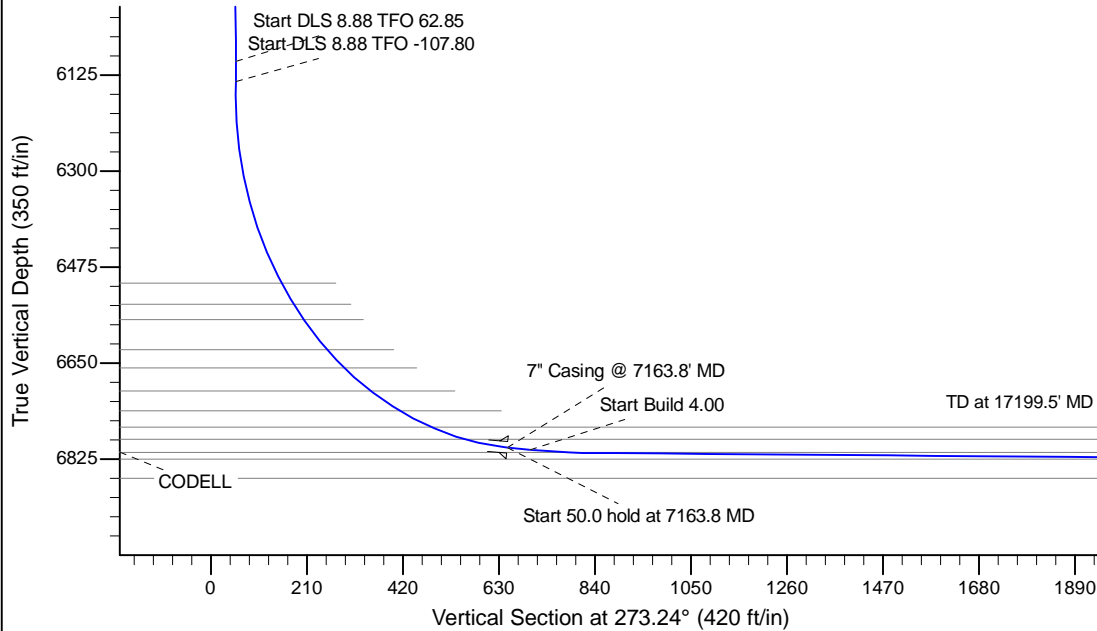
Project: Wattenberg Field
 Site: BB (Sec.3-T05N-R63W) Weld County, CO
 Well: Wells Ranch State BB05-690
 Wellbore: Original Drilling
 Design: APD - Rev 0

Northern Region Drilling - Working

Geodetic System: US State Plane 1983
 Datum: North American Datum 1983
 Ellipsoid: GRS 1980
 Zone: Colorado Northern Zone
 System Datum: Mean Sea Level

SECTION DETAILS

Sec	MD	Inc	Azi	TVD	+N/-S	+E/-W	Dleg	TFace	VSec	Target
1	0.0	0.00	0.00	0.0	0.0	0.0	0.00	0.00	0.0	
2	1200.0	0.00	0.00	1200.0	0.0	0.0	0.00	0.00	0.0	
3	1562.5	7.25	358.00	1561.5	22.9	-0.8	2.00	358.00	2.1	
4	6137.5	7.25	358.00	6100.0	599.9	-20.9	0.00	0.00	54.8	
5	6175.0	9.25	16.71	6137.0	605.1	-20.2	8.88	62.85	54.3	
6	7163.8	85.00	269.47	6804.0	695.0	-610.0	8.88	-107.80	648.3	
7	7213.8	85.00	269.47	6808.4	694.5	-659.8	0.00	0.00	698.0	
8	7328.8	89.60	269.47	6813.8	693.5	-774.6	4.00	0.00	812.6	
9	17199.5	89.60	269.47	6882.5	602.5	-10644.7	0.00	63.25	10661.8	Wells Ranch State BB05-690 BHL 1'FNL, 535'FWL



WELL DETAILS: Wells Ranch State BB05-690					
Ground Level: 4780.0					
	0.0	1402641.32	3297831.14	40.433720	-104.430070
	Northing		Easting		Latitude
					Longitude
Plan: APD - Rev 0 (Wells Ranch State BB05-690/Original Drilling)					
Created By: Shailey Jewell			Date: 8:34, November 18 2015		
OK to submit with 2A as per Noble Drilling 11/18/2015 8:43					