

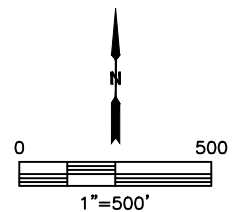
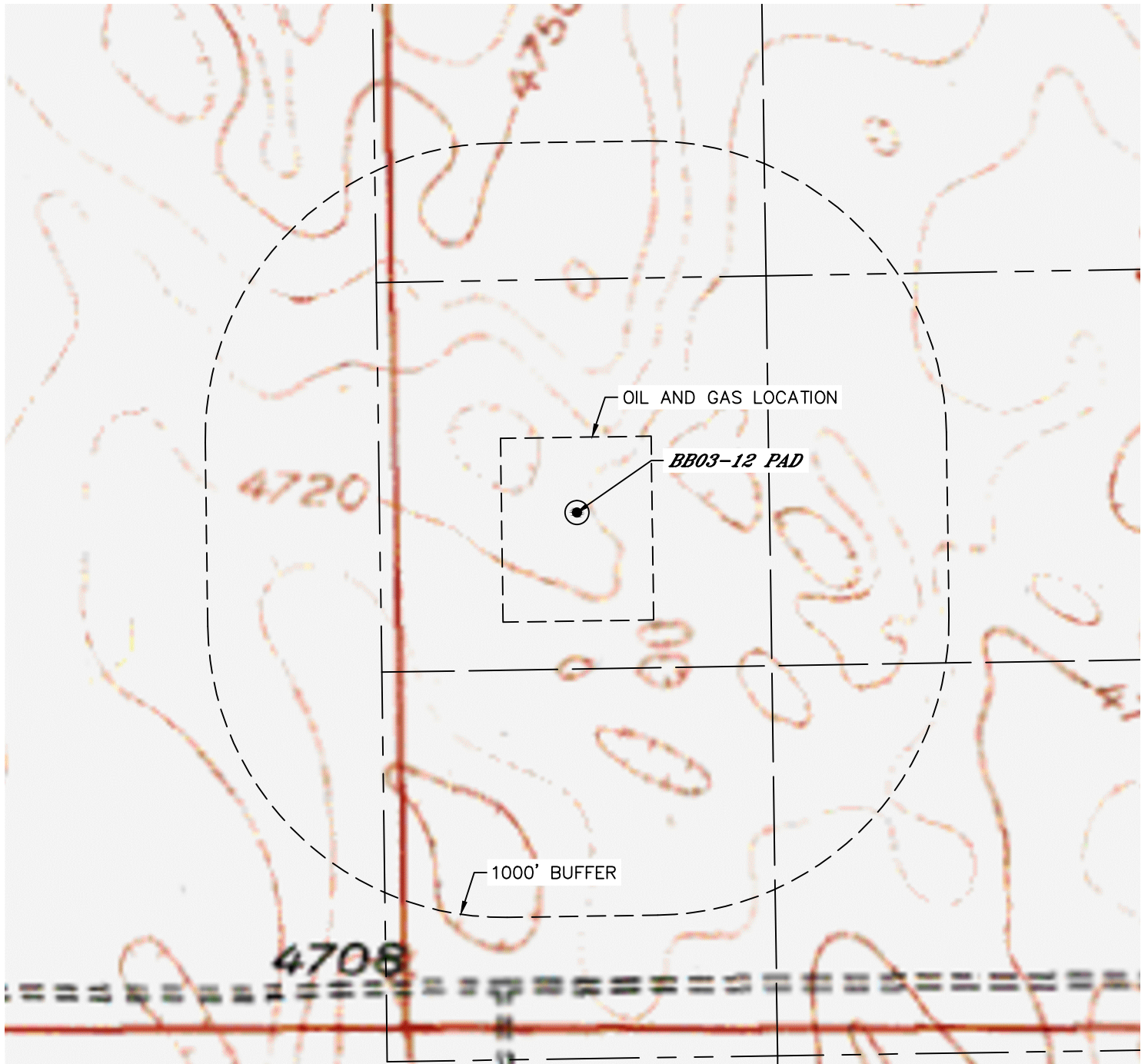


Lat40°, Inc. 6250 W. 10th Street, Unit 2, Greeley, CO 970-515-5294

HYDROLOGY MAP

BB03-12 PAD

SECTION: 3
TOWNSHIP: 5N
RANGE: 63W
6TH. P.M.
WELD COUNTY, CO



NO VISIBLE SURFACE WATER WITHIN 1000'

DATE: 10/6/2015
PROJECT#: 2015126