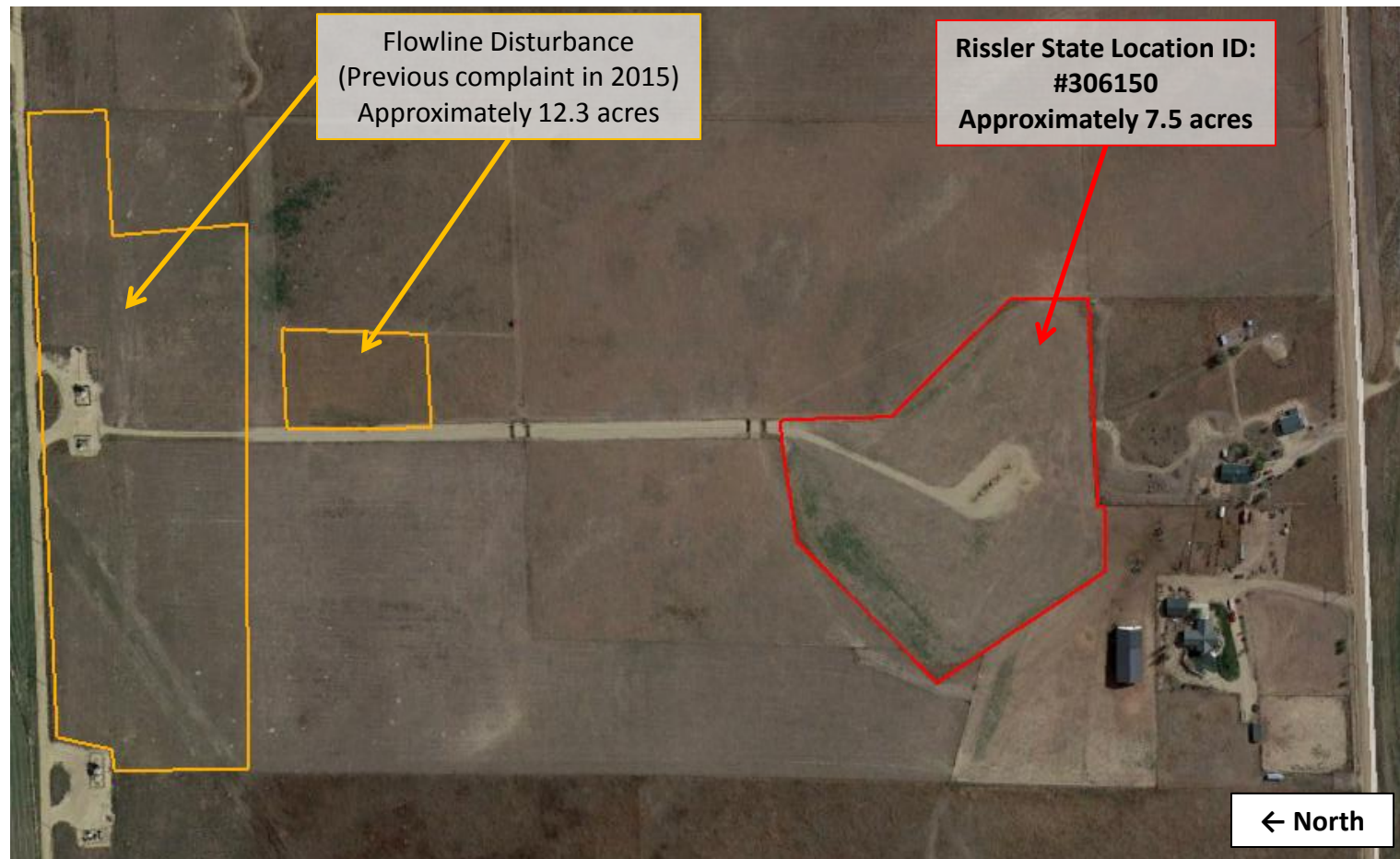


Complaint #200440029
Rissler State Location ID: #306150



Google Earth aerial imagery taken 10/09/15 illustrating areas of interest. Rissler State Location ID: #306150 is the area of concern highlighted in red regarding failed interim reclamation on approximately 7.5 acres of cropland. Interim area is dominated by undesirable species- *Cenchrus longispinus*, *Elymus sp.*, *Kochia scoparia*, *Salsola sp.*, and *Tribulus terrestris*. Very little to no desirable plant species have established affecting the land owners ability to graze the area with livestock.

Previous complaint filed on 11/17/15 regarding an undesirable species- *Cenchrus longispinus*- that dominated the flowline disturbance area totaled approximately 12.3 acres. Reclamation is currently IN PROCESS. Approximately 20.0 acres of the 80.0 acres owned by the land owner is currently unavailable to graze due to undesirable plant species establishment from oil and gas disturbance.

Complaint #200440029



Photo 1. Photo taken from the south central location, facing East. Wildrye (*Elymus* sp.) and Kochia (*Kochia scoparia*) dominate interim area.

Complaint #200440029



Photo 2. Photo taken from the south central location, facing North. Wildrye (*Elymus* sp.) and Kochia (*Kochia scoparia*) dominate interim area.

Complaint #200440029



Photo 3. Photo taken from the south central location, facing West. Wildrye (*Elymus* sp.) and Kochia (*Kochia scoparia*) dominate interim area.

Complaint #200440029



Photo 4. Close-up photo of puncturevine (*Tribulus terrestris*) that has established in many areas throughout the interim area.

Complaint #200440029



Photo 5. Close-up photo of Russian thistle (*Salsola sp.*).

Complaint #200440029



Photo 6. Close-up photo of longspine sandbur (*Cenchrus longispinus*).

Complaint #200440029



Photo 7. Photo taken from the eastern location, facing West. Notice the puncturevine and Kochia dominating the interim area.