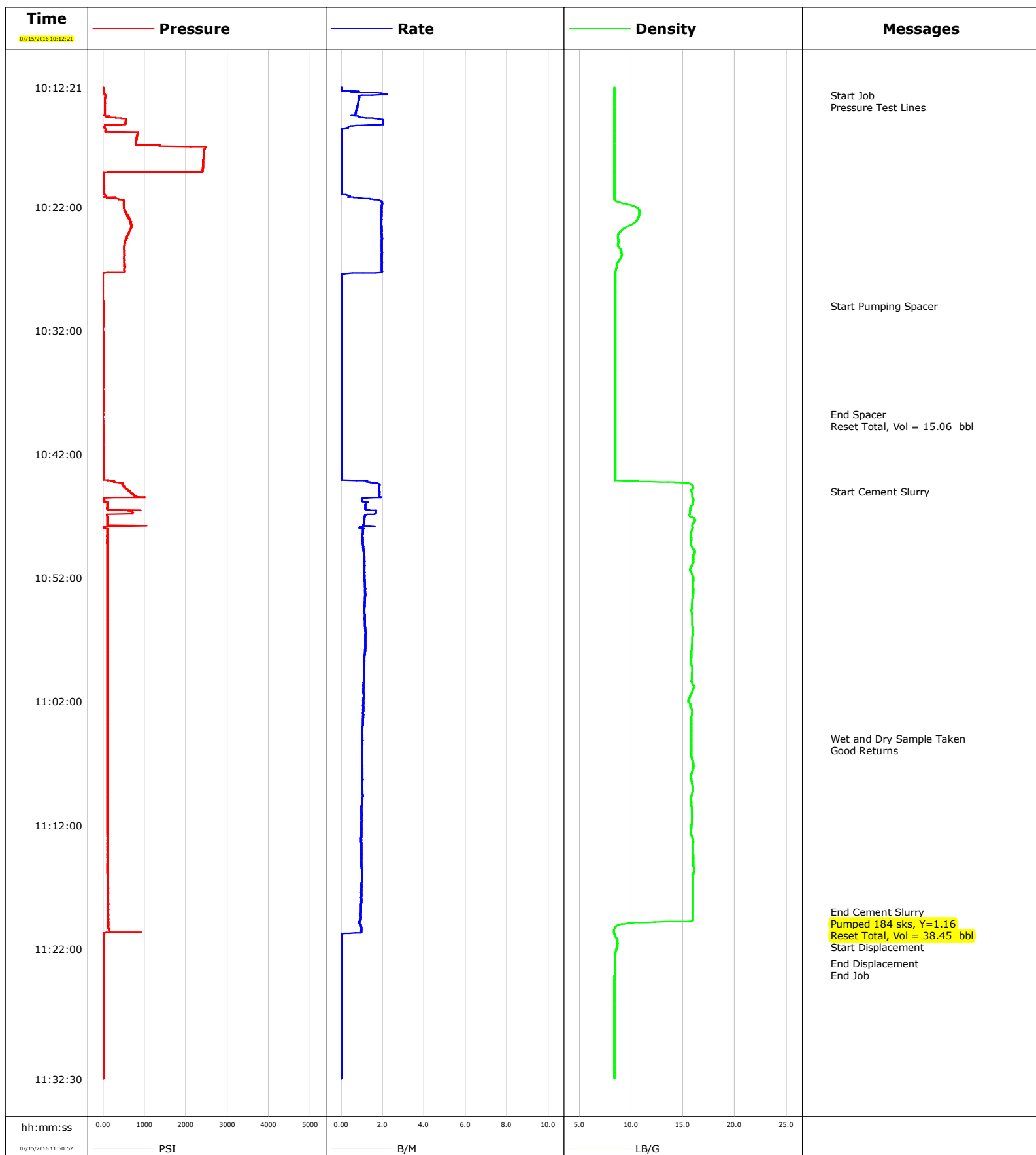


**Well** State 32-16  
**Field** Wattenberg  
**Engineer** Glenn Mendez  
**Country** United States

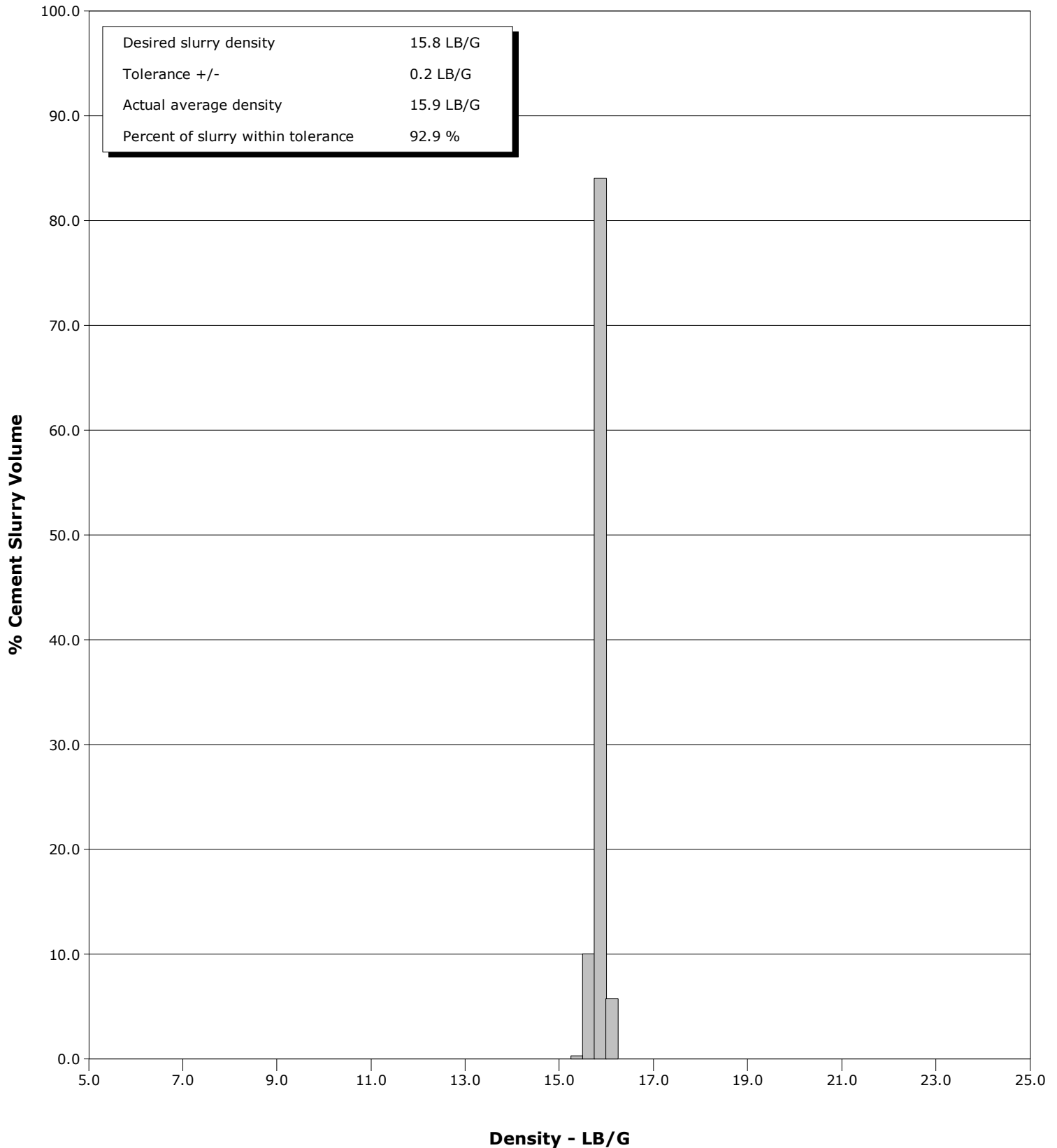
**Client** Anadarko  
**SIR No.** D5VO-01314  
**Job Type** Annular Fill  
**Job Date** 07/16/2016 07/15/2016



**Well** State 32-16  
**Field** Wattenberg  
**Engineer** Glenn Mendez  
**Country** United States

**Client** Anadarko  
**SIR No.** D5VO-01314  
**Job Type** Annular Fill  
**Job Date** 07/16/2016

Cement Slurry - 07/15/2016 10:45:00 to 07/15/2016 11:19:00



# Cementing Service Report

					Customer Anadarko		Job Number D5VO-01314	
Well State 32-16			Location (legal) 2173		Schlumberger Location Jeff Eulberg		Job Start Jul/15/2016	
Field Wattenberg		Formation Name/Type Shale		Deviation 0 deg	Bit Size 8.5 in	Well MD 1395.0 ft		Well TVD 1394.0 ft
County Weld		State/Province Colorado		BHP psi	BHST 95 degF	BHCT 85 degF	Pore Press. Gradient lb/gal	
Well Master 0631063714		API/UWI						
Rig Name Basic 1542	Drilled For Oil & Gas		Service Via Land	Casing/ Liner				
	Depth, ft	Size, in	Weight, lb/ft	Grade	Thread			
Offshore Zone	Well Class New		Well Type Development					
Drilling Fluid Type LT OBM		Max. Density lb/gal	Plastic Viscosity cP	Tubing/Drill Pipe				
	T/D	Depth, ft	Size, in	Weight, lb/ft	Grade	Thread		
Service Line Cementing	Job Type Annular Fill			D		1.3	2.3	J-55
						0.0	0.0	
Max. Allowed Tub. Press psi	Max. Allowed Ann. Press psi		WH Connection 2 3/8" 4.7# T/S	Perforations/Open Hole				
	Top, ft	Bottom, ft	shot/ft	No. of Shots	Total Interval ft			
	ft	ft						
	ft	ft						
	Treat Down Drill Pipe		Displacement bbl		Packer Type		Packer Depth ft	
	Tubing Vol. bbl		Casing Vol. bbl		Annular Vol. bbl		Openhole Vol. bbl	
Casing/Tubing Secured <input checked="" type="checkbox"/>		1 Hole Vol. Circulated prior to Cement <input checked="" type="checkbox"/>		Casing Tools		Squeeze Job		
Lift Pressure psi				Shoe Type		Squeeze Type		
Pipe Rotated <input type="checkbox"/>		Pipe Reciprocated <input type="checkbox"/>		Shoe Depth ft		Tool Type		
No. Centralizers		Top Plugs	Bottom Plugs	Stage Tool Type		Tool Depth ft		
Cement Head Type				Stage Tool Depth ft		Tail Pipe Size in		
Job Scheduled For Jul/15/2016		Arrived on Location Jul/15/2016		Leave Location Jul/15/2016		Collar Type		Tail Pipe Depth ft
						Collar Depth ft		Sqz. Total Vol. bbl
Date	Time 24-hr clock	Treating Pressure PSI	Flow Rate B/M	Density LB/G	Volume BBL	Solid Fraction NULL	Message	
07/15/2016	10:12:21	0.0	0.0	0.0	0.0	0	Started Acquisition	
07/15/2016	10:13:00	0.0	0.0	0.0	0.0	0	Start Job	
07/15/2016	10:13:21	0.0	0.0	0.0	0.0	0		
07/15/2016	10:13:30	0.0	0.0	0.0	0.0	0	Pressure Test Lines	
07/15/2016	10:14:21	0.0	0.0	0.0	0.0	0		
07/15/2016	10:15:21	0.0	0.0	0.0	0.0	0		
07/15/2016	10:16:21	0.0	0.0	0.0	0.0	0		
07/15/2016	10:17:21	0.0	0.0	0.0	0.0	0		
07/15/2016	10:18:21	0.0	0.0	0.0	0.0	0		
07/15/2016	10:19:21	0.0	0.0	0.0	0.0	0		
07/15/2016	10:20:21	0.0	0.0	0.0	0.0	0		
07/15/2016	10:21:21	0.0	0.0	0.0	0.0	0		
07/15/2016	10:22:21	0.0	0.0	0.0	0.0	0		
07/15/2016	10:23:21	0.0	0.0	0.0	0.0	0		
07/15/2016	10:24:21	0.0	0.0	0.0	0.0	0		
07/15/2016	10:25:21	0.0	0.0	0.0	0.0	0		
07/15/2016	10:26:21	0.0	0.0	0.0	0.0	0		
07/15/2016	10:27:21	0.0	0.0	0.0	0.0	0		
07/15/2016	10:28:21	0.0	0.0	0.0	0.0	0		
07/15/2016	10:29:21	0.0	0.0	0.0	0.0	0		
07/15/2016	10:30:00	0.0	0.0	0.0	0.0	0	Start Pumping Spacer	

Well			Field		Job Start		Customer		Job Number	
State 32-16			Wattenberg		Jul/15/2016		Anadarko		D5VO-01314	
Date	Time 24-hr clock	Treating Pressure PSI	Flow Rate B/M	Density LB/G	Volume BBL	Solid Fraction NULL	Message			
07/15/2016	10:31:21	0.0	0.0	0.0	0.0	0				
07/15/2016	10:32:21	0.0	0.0	0.0	0.0	0				
07/15/2016	10:33:21	0.0	0.0	0.0	0.0	0				
07/15/2016	10:34:21	0.0	0.0	0.0	0.0	0				
07/15/2016	10:35:21	0.0	0.0	0.0	0.0	0				
07/15/2016	10:36:21	0.0	0.0	0.0	0.0	0				
07/15/2016	10:37:21	0.0	0.0	0.0	0.0	0				
07/15/2016	10:38:21	0.0	0.0	0.0	0.0	0				
07/15/2016	10:38:45	0.0	0.0	0.0	0.0	0	End Spacer			
07/15/2016	10:38:55	0.0	0.0	0.0	0.0	0	Reset Total, Vol = 15.06 bbl			
07/15/2016	10:39:21	0.0	0.0	0.0	0.0	0				
07/15/2016	10:40:21	0.0	0.0	0.0	0.0	0				
07/15/2016	10:41:21	0.0	0.0	0.0	0.0	0				
07/15/2016	10:42:21	0.0	0.0	0.0	0.0	0				
07/15/2016	10:43:21	0.0	0.0	0.0	0.0	0				
07/15/2016	10:44:21	0.0	0.0	0.0	0.0	0				
07/15/2016	10:45:00	0.0	0.0	0.0	0.0	12	Start Cement Slurry			
07/15/2016	10:45:21	0.0	0.0	0.0	0.0	17				
07/15/2016	10:46:21	0.0	0.0	0.0	0.0	13				
07/15/2016	10:47:21	0.0	0.0	0.0	0.0	22				
07/15/2016	10:48:21	0.0	0.0	0.0	0.0	26				
07/15/2016	10:49:21	0.0	0.0	0.0	0.0	29				
07/15/2016	10:50:21	0.0	0.0	0.0	0.0	35				
07/15/2016	10:51:21	0.0	0.0	0.0	0.0	33				
07/15/2016	10:52:21	0.0	0.0	0.0	0.0	40				
07/15/2016	10:53:21	0.0	0.0	0.0	0.0	39				
07/15/2016	10:54:21	0.0	0.0	0.0	0.0	39				
07/15/2016	10:55:21	0.0	0.0	0.0	0.0	47				
07/15/2016	10:56:21	0.0	0.0	0.0	0.0	47				
07/15/2016	10:57:21	0.0	0.0	0.0	0.0	45				
07/15/2016	10:58:21	0.0	0.0	0.0	0.0	43				
07/15/2016	10:59:21	0.0	0.0	0.0	0.0	46				
07/15/2016	11:00:21	0.0	0.0	0.0	0.0	36				
07/15/2016	11:01:21	0.0	0.0	0.0	0.0	37				
07/15/2016	11:02:21	0.0	0.0	0.0	0.0	38				
07/15/2016	11:03:21	0.0	0.0	0.0	0.0	38				
07/15/2016	11:04:21	0.0	0.0	0.0	0.0	46				
07/15/2016	11:05:00	0.0	0.0	0.0	0.0	45	Wet and Dry Sample Taken			
07/15/2016	11:05:21	0.0	0.0	0.0	0.0	44				
07/15/2016	11:06:21	0.0	0.0	0.0	0.0	45				
07/15/2016	11:07:21	0.0	0.0	0.0	0.0	44				
07/15/2016	11:08:21	0.0	0.0	0.0	0.0	43				
07/15/2016	11:09:21	0.0	0.0	0.0	0.0	35				
07/15/2016	11:10:21	0.0	0.0	0.0	0.0	37				
07/15/2016	11:11:21	0.0	0.0	0.0	0.0	37				
07/15/2016	11:12:21	0.0	0.0	0.0	0.0	38				
07/15/2016	11:13:21	0.0	0.0	0.0	0.0	39				
07/15/2016	11:14:21	0.0	0.0	0.0	0.0	41				
07/15/2016	11:15:21	0.0	0.0	0.0	0.0	43				
07/15/2016	11:16:21	0.0	0.0	0.0	0.0	57				
07/15/2016	11:17:21	0.0	0.0	0.0	0.0	60				
07/15/2016	11:18:21	0.0	0.0	0.0	0.0	60				
07/15/2016	11:19:00	0.0	0.0	0.0	0.0	60	End Cement Slurry			
07/15/2016	11:19:21	0.0	0.0	0.0	0.0	60				

Well State 32-16			Field Wattenberg		Job Start Jul/15/2016	Customer Anadarko	Job Number D5VO-01314
Date	Time 24-hr clock	Treating Pressure PSI	Flow Rate B/M	Density LB/G	Volume BBL	Solid Fraction NULL	Message
07/15/2016	11:19:41	0.0	0.0	0.0	0.0	60	Reset Total, Vol = 38.45 bbl
07/15/2016	11:20:21	0.0	0.0	0.0	0.0	0	
07/15/2016	11:21:21	0.0	0.0	0.0	0.0	0	
07/15/2016	11:21:50	0.0	0.0	0.0	0.0	0	Start Displacement
07/15/2016	11:22:21	0.0	0.0	0.0	0.0	0	
07/15/2016	11:23:10	0.0	0.0	0.0	0.0	0	End Displacement
07/15/2016	11:23:20	0.0	0.0	0.0	0.0	0	End Job
07/15/2016	11:23:21	0.0	0.0	0.0	0.0	0	
07/15/2016	11:24:21	0.0	0.0	0.0	0.0	0	
07/15/2016	11:25:21	0.0	0.0	0.0	0.0	0	
07/15/2016	11:26:21	0.0	0.0	0.0	0.0	0	
07/15/2016	11:27:21	0.0	0.0	0.0	0.0	0	
07/15/2016	11:28:21	0.0	0.0	0.0	0.0	0	
07/15/2016	11:29:21	0.0	0.0	0.0	0.0	0	
07/15/2016	11:30:21	0.0	0.0	0.0	0.0	0	
07/15/2016	11:31:21	0.0	0.0	0.0	0.0	0	
07/15/2016	11:32:21	0.0	0.0	0.0	0.0	0	
07/15/2016	11:33:21	0.0	0.0	0.0	0.0	0	
07/15/2016	11:34:21	0.0	0.0	0.0	0.0	60	
07/15/2016	11:35:21	0.0	0.0	0.0	0.0	64	
07/15/2016	11:36:21	0.0	0.0	0.0	0.0	64	
07/15/2016	11:37:21	0.0	0.0	0.0	0.0	64	
07/15/2016	11:38:21	0.0	0.0	0.0	0.0	64	
07/15/2016	11:39:21	0.0	0.0	0.0	0.0	0	
07/15/2016	11:40:21	0.0	0.0	0.0	0.0	0	
07/15/2016	11:41:21	0.0	0.0	0.0	0.0	0	
07/15/2016	11:42:21	0.0	0.0	0.0	0.0	0	
07/15/2016	11:43:21	0.0	0.0	0.0	0.0	0	
07/15/2016	11:44:21	0.0	0.0	0.0	0.0	0	
07/15/2016	11:45:21	0.0	0.0	0.0	0.0	0	
07/15/2016	11:46:21	0.0	0.0	0.0	0.0	0	
07/15/2016	11:47:21	0.0	0.0	0.0	0.0	0	
07/15/2016	11:48:21	0.0	0.0	0.0	0.0	0	
07/15/2016	11:49:21	0.0	0.0	0.0	0.0	0	

### Post Job Summary

Average Pump Rates, bbl/min					Volume of Fluid Injected, bbl			
Slurry	N2	Mud	Maximum Rate		Total Slurry	Mud	Spacer	N2
Treating Pressure Summary, psi					Breakdown Fluid			
Maximum	Final 0	Average	Bump Plug to	Breakdown	Type	Volume bbl	Density lb/gal	
Avg. N2 Percent %		Designed Slurry Volume 0.0 bbl	Displacement bbl	Mix Water Temp 65 degF	Cement Circulated to Surface? <input type="checkbox"/>		Volume bbl	
					Washed Thru Perfs <input type="checkbox"/>		To ft	
Customer or Authorized Representative			Schlumberger Supervisor			Circulation Lost <input type="checkbox"/>	Job Completed	<input type="checkbox"/>
Nick Lang			Glenn Mendez			-	-	