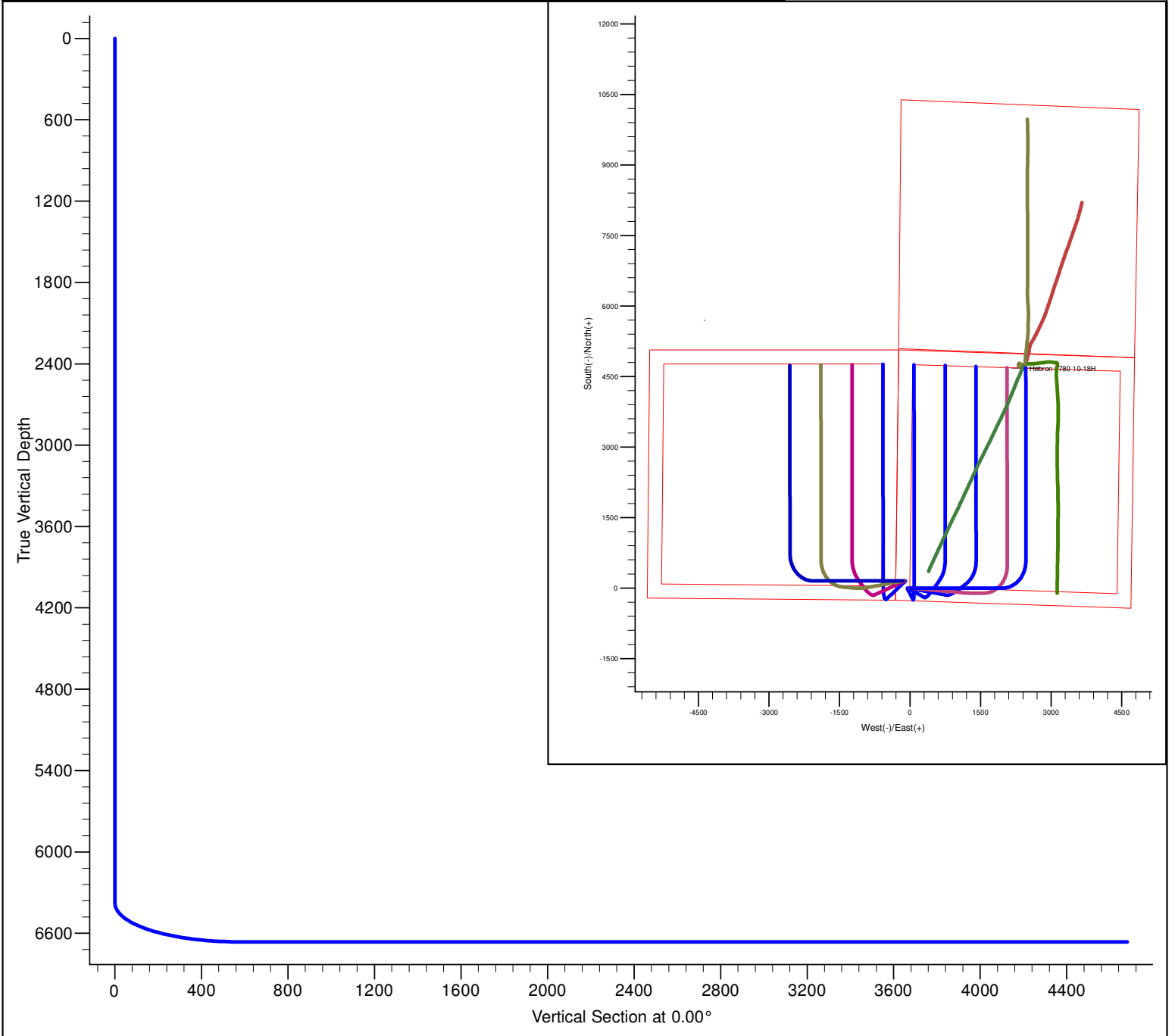


PROJECT DETAILS: North Park Basin										<div><div><div><div></div><div>G</div></div><div><div></div><div>T</div></div><div><div></div><div>M</div></div></div><div><div></div></div></div> <div><div>Azimuths to Grid North</div><div>True North: 0.60°</div><div>Magnetic North: 10.50°</div><div>Magnetic Field</div><div>Strength: 53179.3snT</div><div>Dip Angle: 66.96°</div><div>Date: 12/31/2009</div><div>Model: IGRF200510</div></div>			
Geodetic System: US State Plane 1983 Datum: North American Datum 1983 Ellipsoid: GRS 1980 Zone: Colorado Northern Zone System Datum: Mean Sea Level													
FORMATION TOP DETAILS												CASING DETAILS	
TVDPPath		MDPath		Formation		DipAngle		DipDir		No casing data is available			
6348.2		6887.6		Niobrara		0.00							
DESIGN DETAILS: Design #1												Project: North Park Basin Site: T7N-R80W-S18 Well: Hebron 0780 10-18H Wellbore: Wellbore #1 Design: Design #1	
0' Vertical Section coordinates													
Type	Target	Azimuth	Origin	Type	N/S	E/W	From	TVD					
Target		0.00	Slot		0.0	0.0		0.0					



SECTION DETAILS											
Sec	MD	Inc	Azi	TVD	+N/-S	+E/-W	Dleg	TFace	VSect	Target	
1	0.0	0.00	0.00	0.0	0.0	0.0	0.00	0.00	0.0		
2	2500.0	0.00	0.00	2500.0	0.0	0.0	0.00	0.00	0.0		
3	3972.6	29.45	90.00	3908.6	0.0	370.2	2.00	90.00	0.0		
4	6412.7	29.45	90.00	6033.4	0.0	1570.0	0.00	0.00	0.0		
5	6794.6	60.00	90.00	6301.5	0.0	1835.5	8.00	0.00	0.0		
6	6944.6	60.00	90.00	6376.5	0.0	1965.5	0.00	0.00	0.0		
7	7844.7	90.00	359.98	6663.0	573.1	2461.6	10.00	-90.01	573.1	Hebron 0780 10-18H PBHL	
8	11950.9	90.00	359.98	6663.0	4679.3	2460.2	0.00	0.00	4679.3	Hebron 0780 10-18H PBHL	