

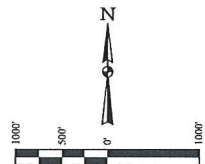
T7N, R80W, 6th P.M.

SandRidge Exploration & Production, LLC

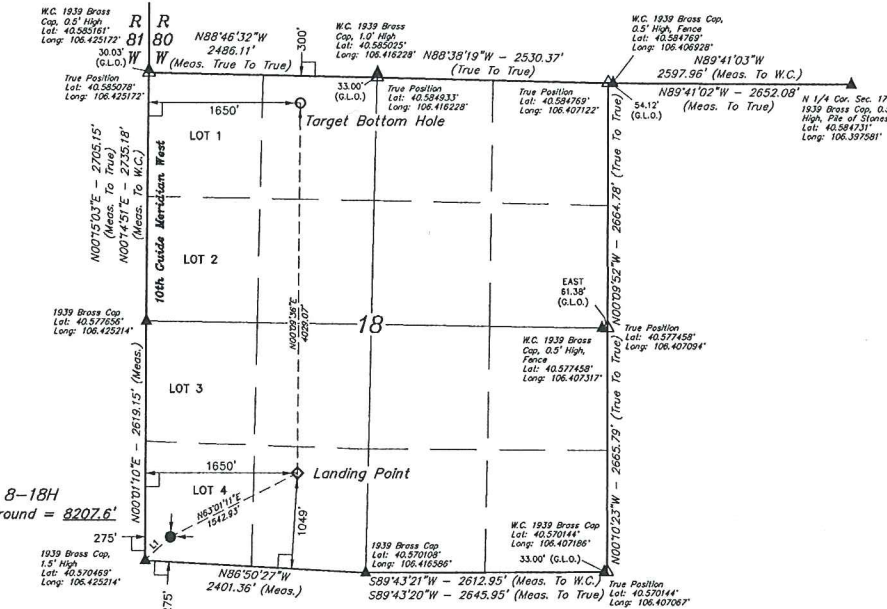
HEBRON 0780 8-18H
LOT 4, SECTION 18, T7N, R80W, 6th P.M.
JACKSON COUNTY, COLORADO

BASIS OF BEARINGS
BASIS OF ELEVATION

SPOT ELEVATION AT THE SOUTHEAST CORNER OF SECTION 29,
T7N, R80W, 6th P.M., TAKEN FROM THE COALMONT QUADRANGLE,
COLORADO, JACKSON COUNTY 7.5 MINUTE QUAD,
(TOPOGRAPHIC MAP) PUBLISHED BY THE UNITED STATES
DEPARTMENT OF THE INTERIOR, GEOLOGICAL SURVEY. SAID
ELEVATION IS MARKED AS BEING 8136 FEET



HEBRON 0780 8-18H
Elev. Ungraded Ground = 8207.6'



LINE TABLE		
LINE	DIRECTION	LENGTH
L1	N46°37'09"E	378.42'

LEGEND:

- = 90° SYMBOL
- = PROPOSED WELLHEAD
- = LANDING POINT
- = TARGET BOTTOM HOLE
- ▲ = SECTION CORNERS LOCATED. (NAD 83)
- △ = SECTION CORNERS RE-ESTABLISHED. (Not Set on Grounds) (NAD 83)

PDOP = 1.4

REV: 2 07-06-16 C.D.L. (BOTTOM HOLE CHANGE)

NAD 83 (SURFACE LOCATION)	NAD 83 (LANDING POINT)	NAD 83 (TARGET BOTTOM HOLE)
LATITUDE = 40°34'16.30" (40.571183)	LATITUDE = 40°34'23.18" (40.573106)	LATITUDE = 40°35'02.97" (40.584158)
LONGITUDE = 106°25'27.21" (106.424225)	LONGITUDE = 106°25'09.40" (106.419278)	LONGITUDE = 106°25'09.36" (106.419239)
NAD 27 (SURFACE LOCATION)	NAD 27 (LANDING POINT)	NAD 27 (TARGET BOTTOM HOLE)
LATITUDE = 40°34'16.33" (40.571203)	LATITUDE = 40°34'23.25" (40.573125)	LATITUDE = 40°35'03.05" (40.584181)
LONGITUDE = 106°25'25.09" (106.423636)	LONGITUDE = 106°25'07.28" (106.418689)	LONGITUDE = 106°25'07.15" (106.418653)
STATE PLANE NAD 83 (CO. NORTH)	STATE PLANE NAD 83 (CO. NORTH)	STATE PLANE NAD 83 (CO. NORTH)
N: 143261.29 E: 274328.66	N: 145296.93 E: 274405.13	N: 145697.61 E: 274482.34
STATE PLANE NAD 27 (CO. NORTH)	STATE PLANE NAD 27 (CO. NORTH)	STATE PLANE NAD 27 (CO. NORTH)
N: 452239.09 E: 1743405.00	N: 452944.79 E: 1744786.46	N: 456971.87 E: 1744838.62



UELS, LLC
Corporate Office • 85 South 200 East
Vernal, UT 84078 • (435) 789-1017

SURVEYED BY	DARREN SHANKS, G.W.	06-10-16	SCALE
DRAWN BY	T.B.	06-16-16	1" = 1000'

WELL LOCATION PLAT