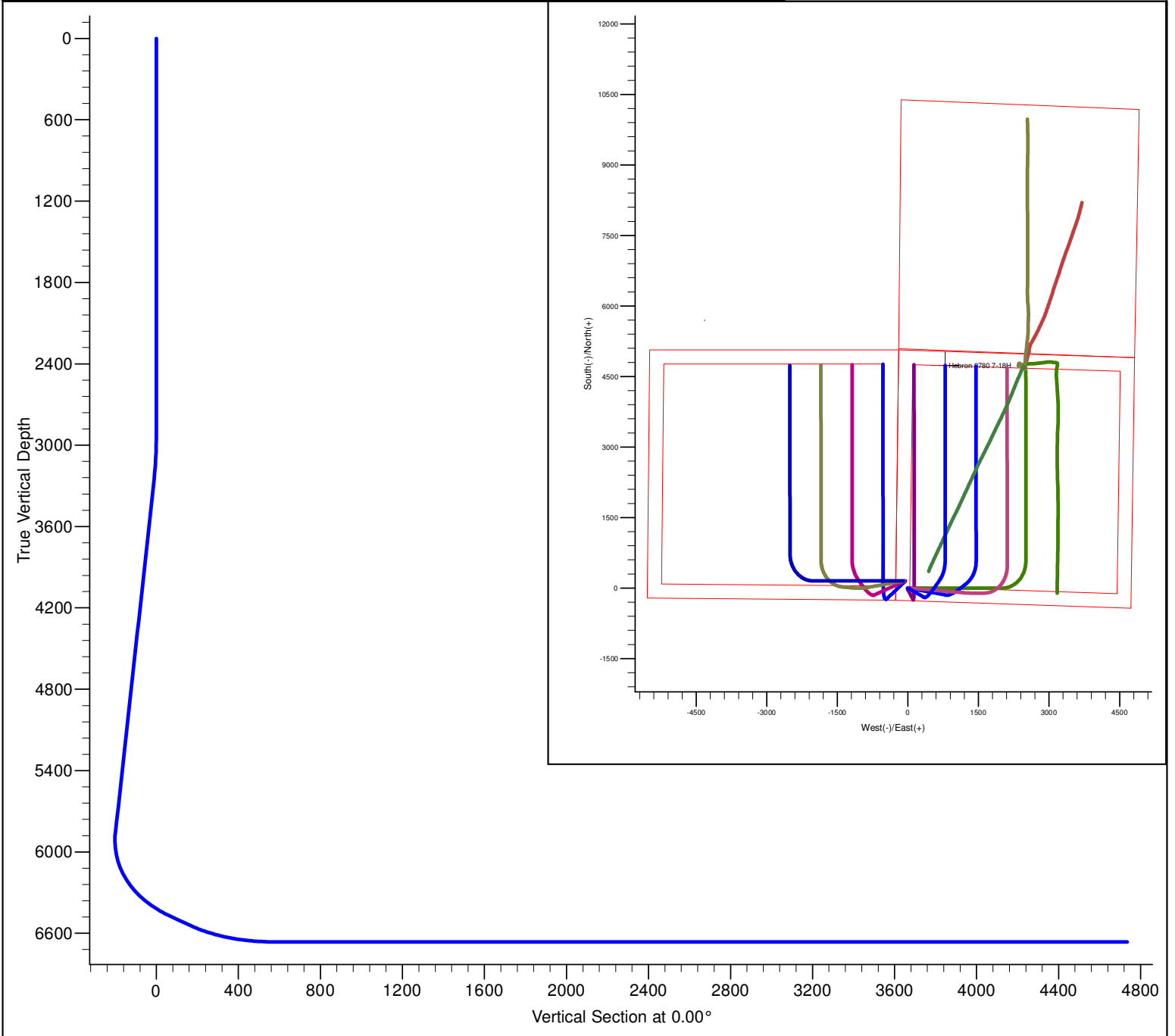


|   |        |                  |        |                       |     |                  |      |        |  |  |  |
|---|--------|------------------|--------|-----------------------|-----|------------------|------|--------|--|--|--|
| PROJECT DETAILS: North Park Basin   |        |                  |        |                       |     |                  |      |        |  | <div><div><div><div></div><div>G</div></div><div><div></div><div>T</div></div><div><div></div><div>M</div></div></div><div><div></div><div></div></div></div> <div><div>Azimuths to Grid North</div><div>True North: 0.60°</div><div>Magnetic North: 10.50°</div><div>Magnetic Field</div><div>Strength: 53179.2snT</div><div>Dip Angle: 66.96°</div><div>Date: 12/31/2009</div><div>Model: IGRF200510</div></div> |  |
| Geodetic System: US State Plane 1983<br>Datum: North American Datum 1983<br>Ellipsoid: GRS 1980<br>Zone: Colorado Northern Zone<br><br>System Datum: Mean Sea Level |        |                  |        |                       |     |                  |      |        |  |  |  |
| FORMATION TOP DETAILS   |        |                  |        |                       |     |                  |      |        |  | CASING DETAILS   |  |
| TVDPPath<br>6348.0  |        | MDPath<br>6432.8 |        | Formation<br>Niobrara |     | DipAngle<br>0.00 |      | DipDir |  | No casing data is available  |  |
|   |        |                  |        |                       |     |                  |      |        |  |  |  |
| DESIGN DETAILS: Design #1   |        |                  |        |                       |     |                  |      |        |  | Project: North Park Basin<br>Site: T7N-R80W-S18<br>Well: Hebron 0780 7-18H<br>Wellbore: Wellbore #1<br>Design: Design #1   |  |
| 0' Vertical Section coordinates   |        |                  |        |                       |     |                  |      |        |  |  |  |
| Type  | Target | Azimuth          | Origin | Type                  | N/S | E/W              | From | TVD    |  |  |  |
| Target  |        | 0.00             | Slot   |                       | 0.0 | 0.0              |      | 0.0    |  |  |  |



|                 |         |       |        |        |        |       |       |        |        |                        |  |
|-----------------|---------|-------|--------|--------|--------|-------|-------|--------|--------|------------------------|--|
| SECTION DETAILS |         |       |        |        |        |       |       |        |        |                        |  |
| Sec             | MD      | Inc   | Azi    | TVD    | +N/-S  | +E/-W | Dleg  | TFace  | VSect  | Target                 |  |
| 1               | 0.0     | 0.00  | 0.00   | 0.0    | 0.0    | 0.0   | 0.00  | 0.00   | 0.0    |                        |  |
| 2               | 2900.0  | 0.00  | 0.00   | 2900.0 | 0.0    | 0.0   | 0.00  | 0.00   | 0.0    |                        |  |
| 3               | 3316.9  | 8.34  | 119.74 | 3315.4 | -15.0  | 26.3  | 2.00  | 119.74 | -15.0  |                        |  |
| 4               | 5887.9  | 8.34  | 119.74 | 5859.3 | -200.0 | 350.0 | 0.00  | 0.00   | -200.0 |                        |  |
| 5               | 6634.0  | 60.00 | 34.35  | 6471.2 | 64.2   | 602.5 | 8.00  | -90.25 | 64.2   |                        |  |
| 6               | 6784.0  | 60.00 | 34.35  | 6546.2 | 171.4  | 675.8 | 0.00  | 0.00   | 171.4  |                        |  |
| 7               | 7227.6  | 90.00 | 359.99 | 6663.0 | 572.1  | 789.9 | 10.00 | -53.82 | 572.1  | Hebron 0780 7-18H PBHL |  |
| 8               | 11388.9 | 90.00 | 359.99 | 6663.0 | 4733.3 | 789.1 | 0.00  | 0.00   | 4733.3 | Hebron 0780 7-18H PBHL |  |