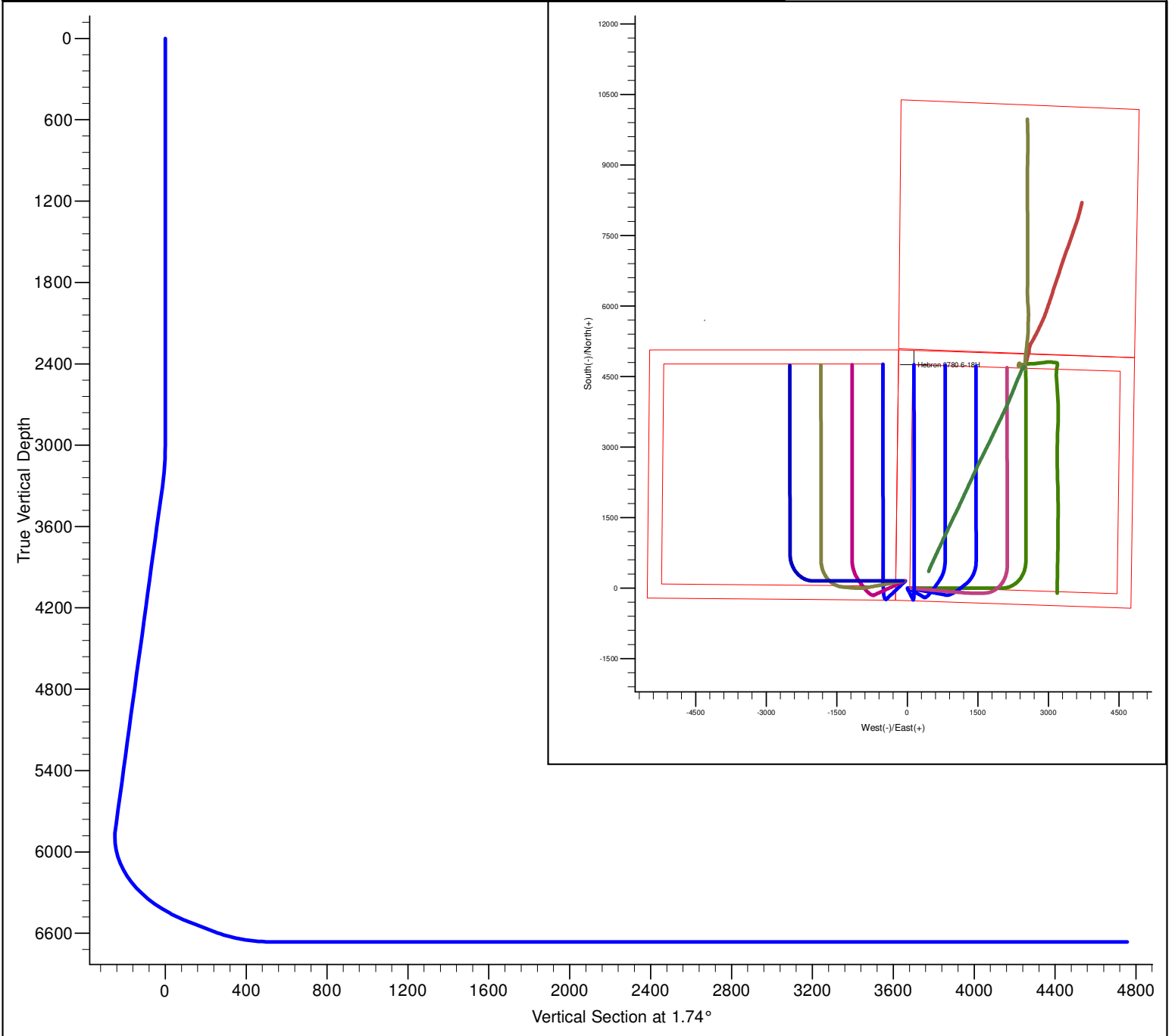


PROJECT DETAILS: North Park Basin										<div><div><div><div></div><div>G</div></div><div><div></div><div>T</div></div><div><div></div><div>M</div></div></div><div><div></div><div></div><div></div></div></div> <div><div>Azimuths to Grid North</div><div>True North: 0.60°</div><div>Magnetic North: 10.50°</div><div>Magnetic Field</div><div>Strength: 53179.2snT</div><div>Dip Angle: 66.96°</div><div>Date: 12/31/2009</div><div>Model: IGRF200510</div></div>			
Geodetic System: US State Plane 1983 Datum: North American Datum 1983 Ellipsoid: GRS 1980 Zone: Colorado Northern Zone System Datum: Mean Sea Level													
FORMATION TOP DETAILS												CASING DETAILS	
TVDPPath 6348.0		MDPath 6401.4		Formation Niobrara		DipAngle 0.00		DipDir		No casing data is available			
DESIGN DETAILS: Design #1												Project: North Park Basin Site: T7N-R80W-S18 Well: Hebron 0780 6-18H Wellbore: Wellbore #1 Design: Design #1	
0' Vertical Section coordinates													
Type TD	Target	Azimuth 1.74	Origin Slot	Type	N/S 0.0	E/W 0.0	From	TVD 0.0					



SECTION DETAILS											
Sec	MD	Inc	Azi	TVD	+N/-S	+E/-W	Dleg	TFace	VSect	Target	
1	0.0	0.00	0.00	0.0	0.0	0.0	0.00	0.00	0.0		
2	3000.0	0.00	0.00	3000.0	0.0	0.0	0.00	0.00	0.0		
3	3298.5	5.97	153.34	3297.9	-13.9	7.0	2.00	153.34	-13.7		
4	5838.8	5.97	153.34	5824.5	-250.0	125.5	0.00	0.00	-246.1		
5	6655.9	60.00	359.97	6511.3	105.2	146.7	8.00	-154.72	109.6	Hebron 0780 6-18H PBHL	
6	6805.9	60.00	359.97	6586.3	235.1	146.7	0.00	0.00	239.5		
7	7105.9	90.00	359.97	6663.0	521.6	146.5	10.00	0.00	525.8	Hebron 0780 6-18H PBHL	
8	11338.5	90.00	359.97	6663.0	4754.2	144.4	0.00	0.00	4756.4	Hebron 0780 6-18H PBHL	