

Final Reclamation Inspection

06/28/2016

Operator: Petro-Canada

Location ID: 311664

Adams County, CO

SWNW Section 24 T3S R59W

Aaron Trujillo

Reclamation Specialist

COGCC

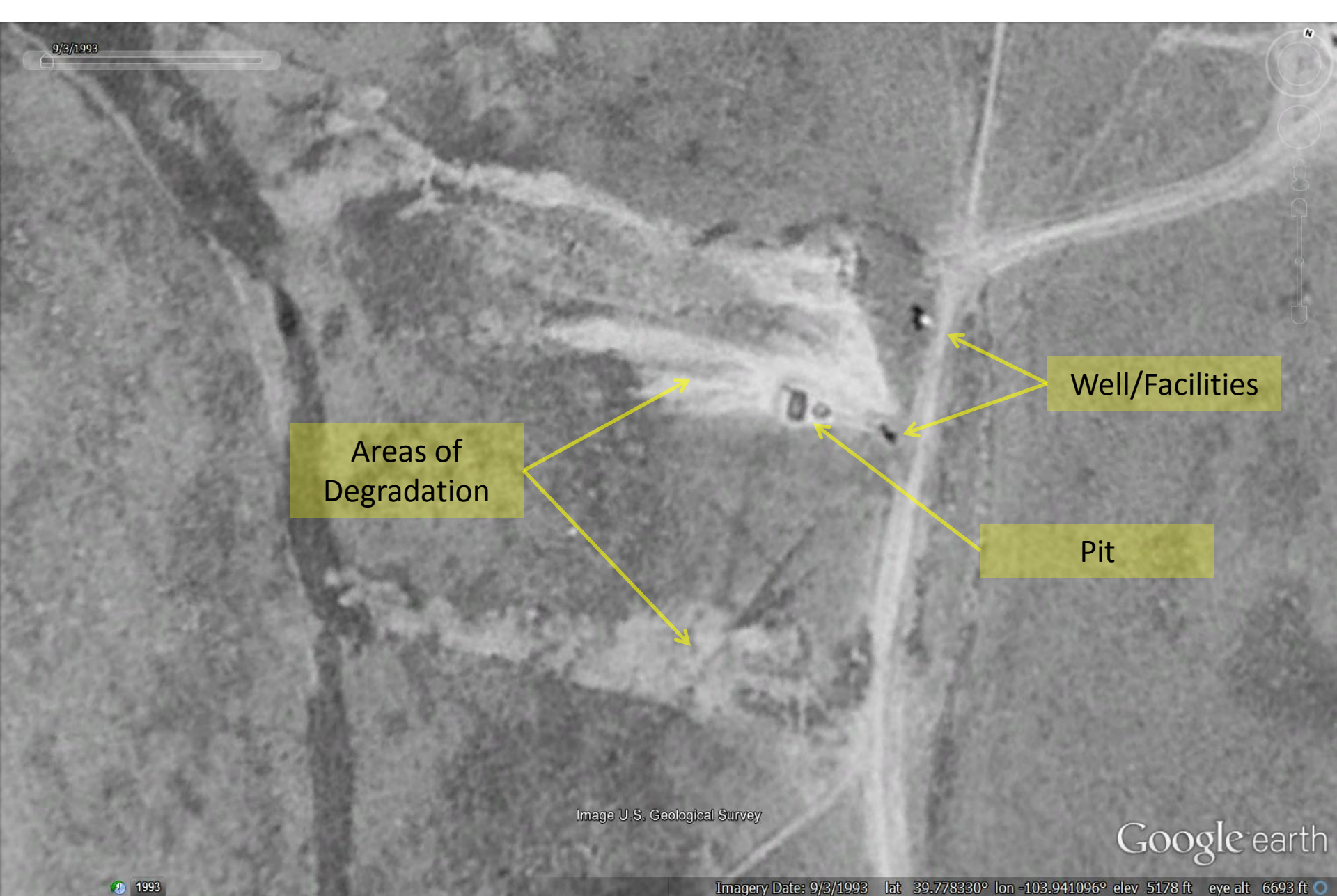


Image U.S. Geological Survey

Google earth

1993

Imagery Date: 9/3/1993 lat 39.778330° lon -103.941096° elev 5178 ft eye alt 6693 ft

Figure 1: 1933 Aerial imagery showing location of Pit, facilities and well. Note the two large areas of degradation

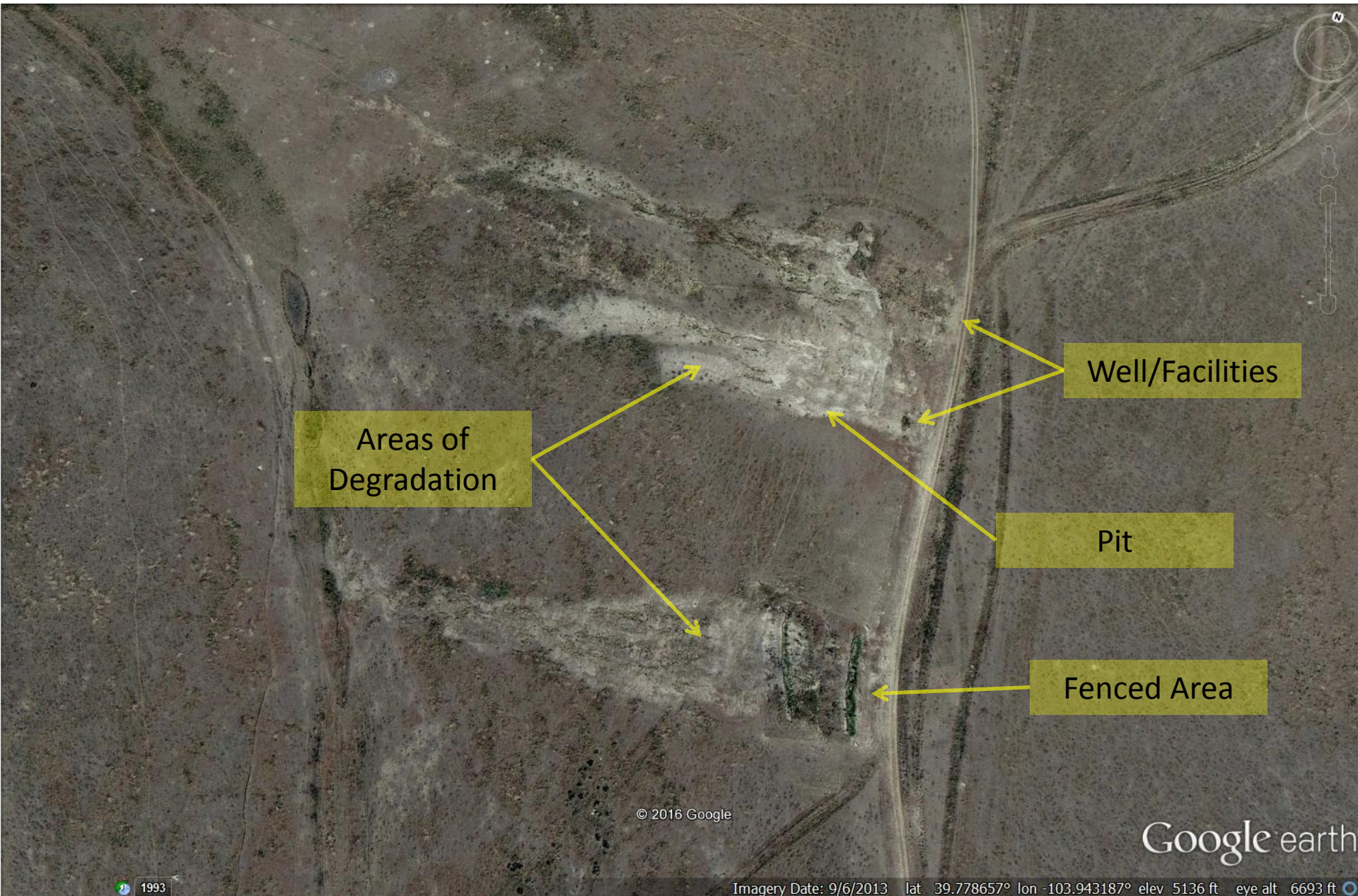


Figure 2: 9/6/2013 aerial imagery of location. Note areas of degradation (southern and northern), and an area that has been fenced off



Figure 3: Photo taken between the two areas of degradation, facing south towards a portion southern degradation area (DA) that has been fenced off. Note vegetation predominantly cheat grass.



06.28.2016 12:45

Figure 4: Photo taken between the two areas of degradation, facing southwest towards a portion southern DA that has been fenced off. Note vegetation predominantly cheat grass.



Figure 5: Photo taken from the fenced off, southern DA. Note vegetation has not achieved uniform cover, and is predominantly cheat grass.



Figure 6: Photo taken from the fenced off, southern DA, facing southwest. Note vegetation has not achieved uniform cover, and is predominantly cheat grass.



Figure 7: Photo taken from the southern DA, facing east towards the fenced area. Photo shows large unvegetated areas, and vegetation predominantly cheat grass.



Figure 8: Photo taken from the southern DA, facing east towards the fenced area. Photo shows large unvegetated areas, and vegetation predominantly cheat grass



Figure 9: Photo taken from the southern DA, facing east towards the fenced area. Photo shows large unvegetated areas, and vegetation predominantly cheat grass



Figure 10: Photo taken from the southern DA, facing east towards the fenced area. Photo shows large unvegetated areas, and vegetation predominantly cheat grass



Figure 11: Photo taken from the southern DA, facing east towards the fenced area. Photo shows large unvegetated areas, and vegetation predominantly cheat grass



Figure 12: Photo taken from the NORTHERN DA, facing east towards the access road. Photo shows large unvegetated areas, and degradation due to erosion.



Figure 13: Photo taken from the NORTHERN DA, facing east towards the access road. Photo shows large unvegetated areas, and degradation due to erosion.



Figure 14: Photo taken from the NORTHERN DA, facing east towards the access road. Photo shows large unvegetated areas, and degradation due to erosion. 6' measuring stick for reference.



Figure 15: Photo taken from the NORTHERN DA, facing east towards the access road. Photo shows large unvegetated areas, and degradation due to erosion. 6' measuring stick for reference.



Figure 16: Photo taken from the NORTHERN DA, facing south. Photo shows large unvegetated areas. Striations in soil suggestion reseeding had been attempted in this area.



Figure 17: Photo taken from the Northern DA, facing east towards the access road. Photo shows stormwater control wattles in disrepair.



Figure 18: Photo taken from the Northern DA, facing north. Photo shows stormwater control wattles in disrepair.



06.28.2016 12:55

Figure 19: Photo taken from the NORTHERN DA, facing northwest. Photo shows large unvegetated areas, and degradation due to erosion.



Figure 20: Photo taken from the NORTHERN DA, facing northwest. Photo shows large unvegetated areas, and degradation due to erosion.



Figure 21: Photo taken from the Northern DA, facing northwest. Photo shows stormwater control wattles in disrepair.



Figure 22: Photo taken from the Northern DA, facing northwest. Photo shows stormwater control wattles in disrepair.



Figure 23: Photo taken from the NORTHERN DA, facing northwest. Photo shows large unvegetated areas, and degradation due to erosion.



Figure 24: Photo taken from the Northern DA, facing southeast. Photo shows degradation and stormwater control wattles in disrepair.