

1801 Broadway
Suite 500
Denver, Colorado 80202



Callie Fiddes
Regulatory Compliance Specialist
Tel: 303.398.0550
E-mail: cfiddes@gwogco.com

8/1/2016

Colorado Oil and Gas Conservation Commission
1120 Lincoln Street, Suite 801
Denver, Colorado 80203

RE: **Proposed Wellbore Spacing Unit**
Schneider HD 11-339HN
Niobrara New Drill

SWSW Section 7
Township 4N, Range 66W, 6th P.M.
Weld County, Colorado

Dear Director:

Great Western Operating Company, LLC is planning to drill the above captioned well in accordance with the provisions of COGCC Rule 318A.e.

Great Western proposed wellbore spacing unit consists of:

- **S2 Sec 11, S2 Sec 12**
- **640 acres**

The 30 day notification time period has passed and we have not received any objections to such well locations or proposed spacing unit, therefore Great Western hereby requests the Director to approve the above mentioned well. Great Western Operating Company, LLC respectfully requests that the COGCC review the enclosed map illustrating the proposed wellbore spacing unit.

Respectfully,

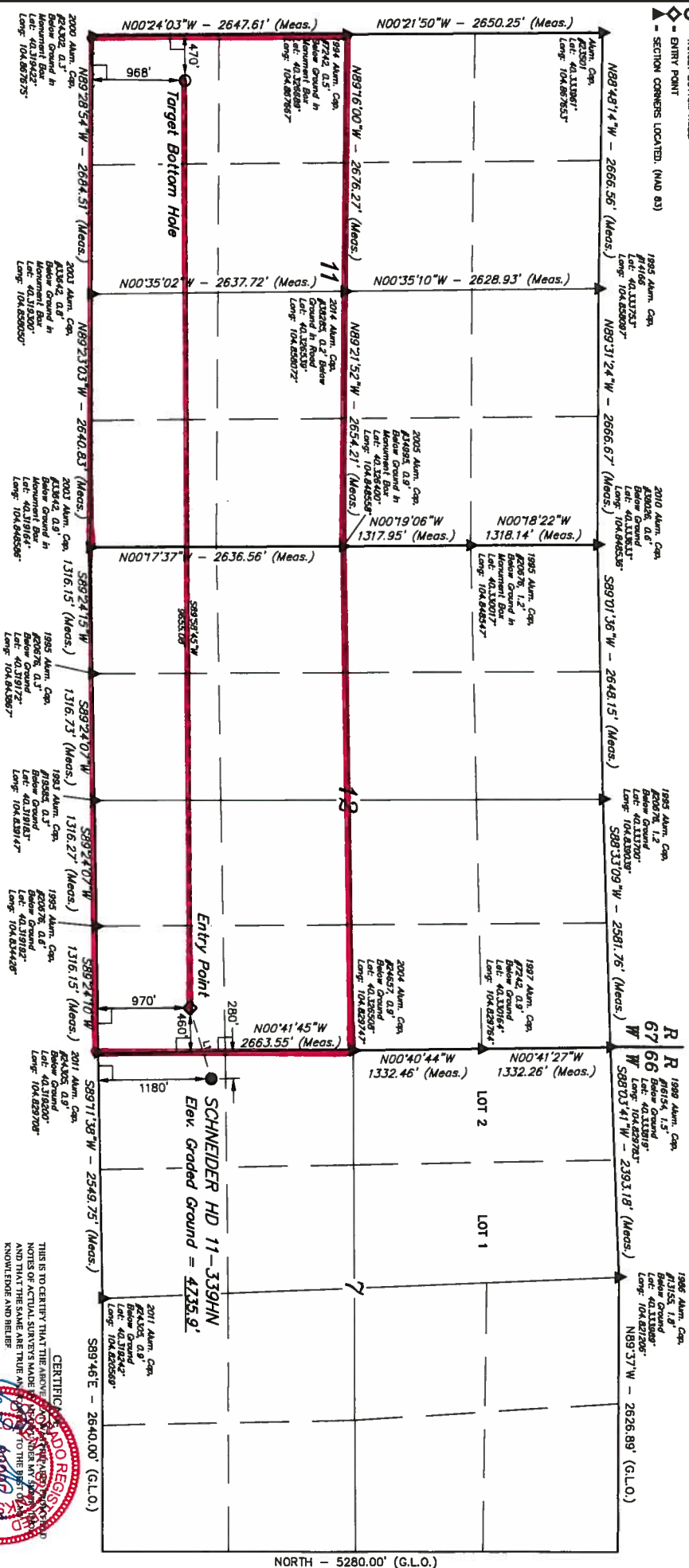
Callie Fiddes

Callie Fiddes
Regulatory Compliance Specialist
Great Western Operating Company, LLC

LEGEND:

- 9" SYMBOL
- PROPOSED WELLHEAD
- TARGET BOTTOM HOLE
- ENTRY POINT
- SECTION CORNERS LOCATED (NAD 83)

T4N, R66W, 6th P.M.

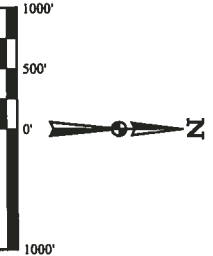


BASIS OF BEARINGS
BASIS OF ELEVATION

USGS COOPERATIVE BASE NETWORK CONTROL STATION,
DESIGNATION "VERNAL YEA", NGS DATA SHEET LISTS THE
NAVD 88 ELEVATION AS BEING 5026 FEET.



UEIS, LLC
Corporate Office: 85 South 200 East
Vernal, UT 84078 • (435) 785-1017



LINE TABLE		
LINE	DIRECTION	LENGTH
L1	S73°27'40"W	786.18'

NAD 83 (SURFACE LOCATION)	NAD 83 (ENTRY POINT)	NAD 83 (TARGET BOTTOM HOLE)
LATITUDE = 40°19'20.79" (40.323442)	LATITUDE = 40°19'18.68" (40.321858)	LATITUDE = 40°19'14.61" (40.320588)
LONGITUDE = 104°49'43.40" (104.828722)	LONGITUDE = 104°49'52.94" (104.831372)	LONGITUDE = 104°50'05.95" (104.835986)
NAD 83 (SURFACE LOCATION)	NAD 83 (ENTRY POINT)	NAD 83 (TARGET BOTTOM HOLE)
LATITUDE = 40°19'20.86" (40.323461)	LATITUDE = 40°19'18.75" (40.321875)	LATITUDE = 40°19'14.47" (40.320725)
LONGITUDE = 104°49'41.57" (104.828194)	LONGITUDE = 104°49'51.04" (104.830644)	LONGITUDE = 104°50'05.65" (104.835458)

PDOP = 1.3

GREAT WESTERN OPERATING COMPANY
SCHNEIDER HD 11-339HN
SW 1/4 SW 1/4 SECTION 7, T4N, R66W, 6th P.M.
WELD COUNTY, COLORADO
SURVEYED BY GREG WEMER, J.S. 05-27-16 SCALE
DRAWN BY K.B. 05-31-16 1" = 1000'
WELL LOCATION PLAT



THIS IS TO CERTIFY THAT THE ABOVE
SURVEY WAS MADE BY THE ABOVE
SURVEYOR AND THAT THE SAME ARE TRUE AND
KNOWLEDGE AND BELIEF.

NORTH - 5280.00' (G.L.O.)