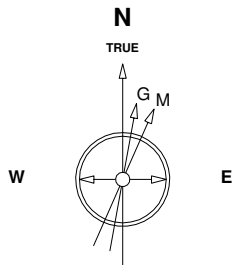


# Great Western Operating Company, LLC

**Location** Colorado  
**Field** Wattenburg  
**Installation** Schneider - South  
**Slot** Slot 09 - Schneider HD 11-339HN  
**Well** Schneider HD 11-339HN  
**Wellbore** Schneider HD 11-339HN (PWB)

Created by admin  
Date plotted 25-Jul-2016  
Plot reference is Schneider HD 11-339HN (PWB).  
Ref wellpath is Schneider HD 11-329HN (PWP#1).  
Coordinates are in Feet reference Slot 09 - Schneider HD 11-339HN.  
True Vertical Depths are reference Rig Datum.  
Measured Depths are reference Rig Datum.  
Rig Datum: Planned Datum #1  
Rig Datum to Mean Sea Level: 4751.30 ft.  
Plot North is aligned to TRUE North.



Scale 1 cm = 400 ft

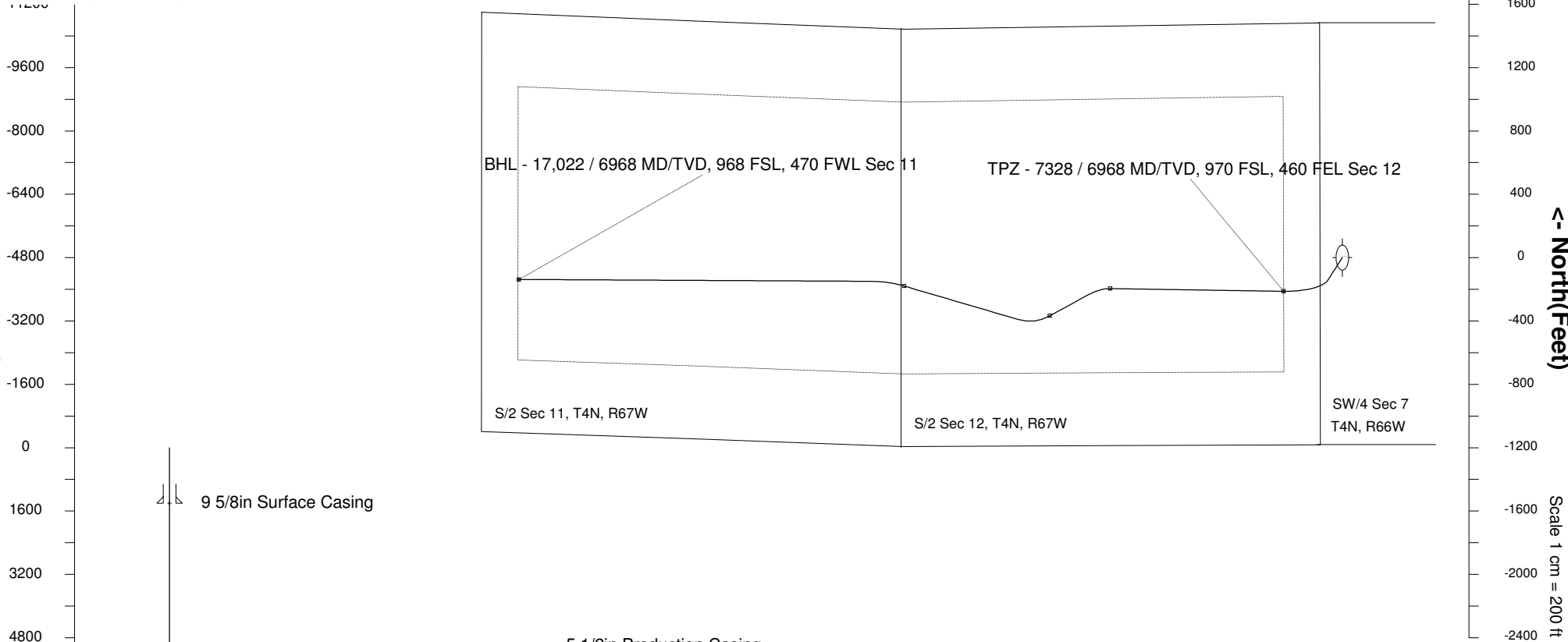
East (Feet) ->

-13600 -12800 -12000 -11200 -10400 -9600 -8800 -8000 -7200 -6400 -5600 -4800 -4000 -3200 -2400 -1600 -800 0 800 1600

22-Jul-2014  
IGRF Model [1900.0-2020.0] Dip: 66.86 deg Field: 52682.2 nT  
Lat: N40 19 21.9792 Long: W104 49 43.4100 Elev: 4735.10 ft  
Magnetic North is 8.55 deg East of TRUE North  
To correct azimuth from Magnetic to TRUE add 8.55 deg

Scale 1 cm = 800 ft

<- True Vertical Depth (Feet)



9 5/8in Surface Casing

5 1/2in Production Casing

TPZ - 7328 / 6968 MD/TVD, 970 FSL, 460 FEL Sec 12

BHL - 17,022 / 6968 MD/TVD, 968 FSL, 470 FWL Sec 11

Scale 1 cm = 800 ft

Vertical Section (Feet) ->

Azimuth 269.24 with reference 0.00 N, 0.00 E from Slot 09 - Schneider HD 11-339HN

## WELL PROFILE DATA

Point	MD	Inc	Azi	TVD	North	East	deg/100ft	V. Sect
Tie on	16.20	0.00	0.00	16.20	S 0.00	W 0.00		-0.00
KOP	5435.00	0.00	231.85	5435.00	S 0.00	W 0.00	0.00	-0.00
End of Build	5946.78	15.35	231.85	5940.68	S 42.11	W 53.60	9.84	54.15
End of Hold	6547.68	15.35	231.85	6520.13	S 140.39	W 178.71	0.00	180.55
Target TPZ - ...Sec 12	7328.25	90.00	270.45	6968.00	S 212.75	W 739.85	32.81	742.60
Target KOP	9516.20	90.00	270.45	6968.00	S 195.75	W 2927.73	0.00	2930.07
End of Turn	9779.01	90.00	254.68	6968.00	S 229.67	W 3187.51	19.69	3190.27
Target Noble ... South	10301.36	90.00	254.68	6968.00	S 367.71	W 3691.29	0.00	3695.84
End of Turn	10695.71	90.00	278.34	6968.00	S 391.57	W 4082.11	19.69	4086.94
Target Post KOP	12156.71	90.00	278.34	6968.00	S 179.72	W 5527.67	0.00	5529.57
End of Turn	12566.03	90.00	270.15	6968.00	S 149.45	W 5935.52	6.56	5936.98
T.D. & Target BHL... 11	17022.24	90.00	270.15	6968.00	S 137.72	W 10391.71	0.00	10392.63