




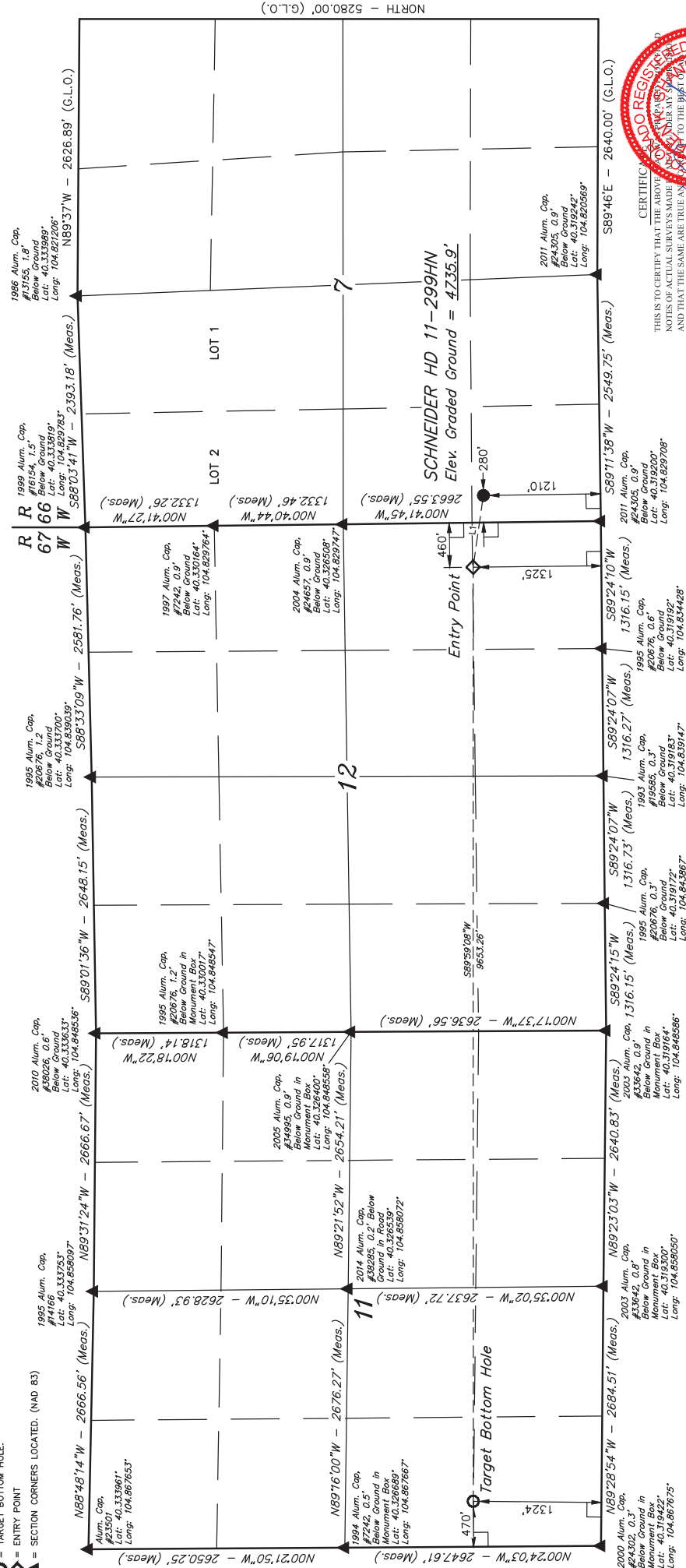


LEGEND:

-  = 90° SYMBOL
-  = PROPOSED WELLHEAD.
-  = TARGET BOTTOM HOLE.
-  = ENTRY POINT
-  = SECTION CORNERS LOC.



CERTIFICATE OF REGISTRATION

THIS IS TO CERTIFY THAT THE ABOVE NAMED PARTY HAS TAKEN THE NOTES OF ACTUAL SURVEYS MADE BY HIMSELF OR HERSELF, AND THAT THE SAME ARE TRUE AND CORRECT TO THE BEST OF HIS OR HER KNOWLEDGE AND BELIEF.

06-09-16
STATE OF COLORADO
REGISTRATION NO. 28285
REGISTERED LAND SURVEYOR
OFFICE

LINE TABLE		
LINE	DIRECTION	LENGTH
L1	N81°51'43"W	748.88'

BASIS OF BEARINGS

USGS COOPERATIVE BASE NETWORK CONTROL STATION,
DESIGNATION "VERMILYEA". NGS DATA SHEET LISTS THE
NAVD 88 ELEVATION AS BEING 5026 FEET.

UELS, LLC
Corporate Office * 85 South 200 East
Vernal, UT 84078 * (435) 789-1017



PDOP = 1.2

NAD 83 (SURFACE LOCATION)	NAD 83 (ENTRY POINT)	NAD 83 (TARGET BOTTOM HOLE)
LATITUDE = 40°19'21.09" (40.32525)	LATITUDE = 40°19'22.20" (40.32283)	LATITUDE = 40°19'22.93" (40.32306)
LONGITUDE = 104°49'43.40" (104.82872)	LONGITUDE = 104°49'22.496" (104.831378)	LONGITUDE = 104°51'15.55" (104.865986)
NAD 27 (SURFACE LOCATION)	NAD 27 (ENTRY POINT)	NAD 27 (TARGET BOTTOM HOLE)
LATITUDE = 40°19'21.15" (40.32524)	LATITUDE = 40°19'22.26" (40.322850)	LATITUDE = 40°19'22.99" (40.32305)
LONGITUDE = 104°49'41.51" (104.828194)	LONGITUDE = 104°49'51.06" (104.830650)	LONGITUDE = 104°51'15.65" (104.865458)

GREAT WESTERN OPERATING COMPANY

SCHNEIDER HD 11-299HN
SW 1/4 SW 1/4, SECTION 7, T4N, R66W, 6th P.M.
WELD COUNTY, COLORADO

SURVEYED BY	GREG WEINER, J.S.	05-27-16	SCALE
DRAWN BY	K.B.	05-31-16	1" = 1000'

WELL LOCATION PLAT