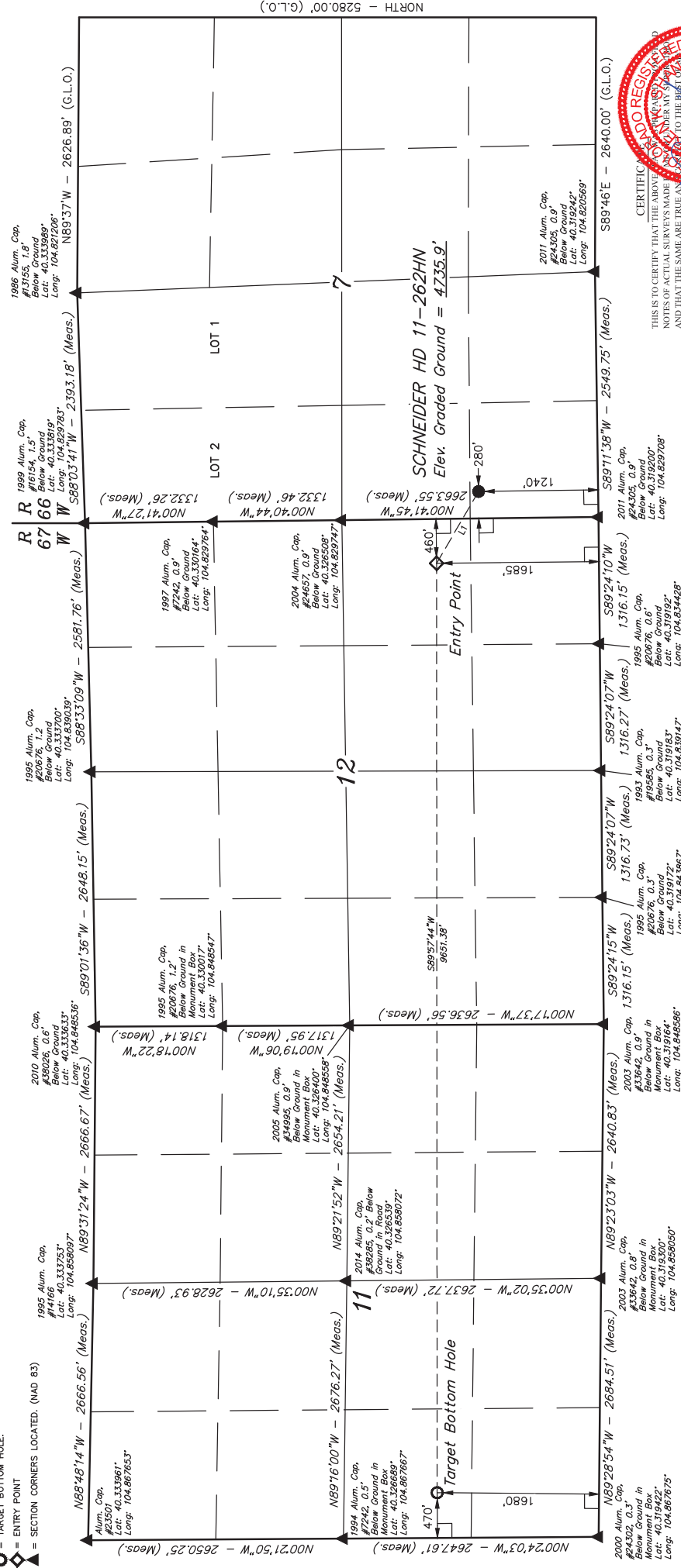


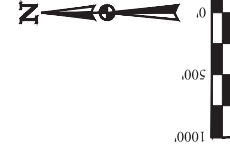
T4N, R66W, 6th P.M.

LEGEND:

- 90° SYMBOL
- PROPOSED WELLHEAD.
- TARGET BOTTOM HOLE.
- ENTRY POINT
- SECTION CORNERS LOCATED. (NAD 83)



LINE TABLE		
LINE	DIRECTION	LENGTH
L1	N59°40'19\"W	863.58'



BASIS OF BEARINGS
BASIS OF ELEVATION

USGS COOPERATIVE BASE NETWORK CONTROL STATION,
DESIGNATION "VERMILYEA", NGS DATA SHEET LISTS THE
NAVD 88 ELEVATION AS BEING 5026 FEET.

UJINTAH
SURVEYING & LAND SERVICES, INC.
Corporate Office: 85 South 200 East
Vernal, UT 84078 * (435) 789-1017

PDOP = 1.2

NAD 83 (SURFACE LOCATION)		NAD 83 (ENTRY POINT)		NAD 83 (TARGET BOTTOM HOLE)	
LATITUDE = 40°19'21.38\"		LATITUDE = 40°19'25.75\"		LATITUDE = 40°19'26.44\"	
LONGITUDE = 104°49'43.40\"		LONGITUDE = 104°49'52.98\"		LONGITUDE = 104°51'57.54\"	
NAD 27 (SURFACE LOCATION)		NAD 27 (ENTRY POINT)		NAD 27 (TARGET BOTTOM HOLE)	
LATITUDE = 40°19'21.45\"		LATITUDE = 40°19'25.82\"		LATITUDE = 40°19'26.31\"	
LONGITUDE = 104°49'41.51\"		LONGITUDE = 104°49'51.08\"		LONGITUDE = 104°51'55.64\"	

GREAT WESTERN OPERATING COMPANY

SCNEIDER HD 11-262HN
SW 1/4 SW 1/4, SECTION 7, T4N, R66W, 6th P.M.

SURVEYED BY	GREG WEIMER, J.S.	SCALE	1\" = 1000'
DRAWN BY	K.B.	DATE	05-27-16

WELL LOCATION PLAT