

1801 Broadway
Suite 500
Denver, Colorado 80202



Callie Fiddes
Regulatory Compliance Specialist
Tel: 303.398.0550
E-mail: cfiddes@gwogco.com

8/1/2016

Colorado Oil and Gas Conservation Commission
1120 Lincoln Street, Suite 801
Denver, Colorado 80203

RE: **Proposed Wellbore Spacing Unit**
Schneider HD 11-222HN
Niobrara New Drill

SWSW Section 7
Township 4N, Range 66W, 6th P.M.
Weld County, Colorado

Dear Director:

Great Western Operating Company, LLC is planning to drill the above captioned well in accordance with the provisions of COGCC Rule 318A.e.

Great Western proposed wellbore spacing unit consists of:

- **S2N2, N2S2 Sec 11**
- **S2N2, N2S2 Sec 12**
- **640 acres**

The 30 day notification time period has passed and we have not received any objections to such well locations or proposed spacing unit, therefore Great Western hereby requests the Director to approve the above mentioned well. Great Western Operating Company, LLC respectfully requests that the COGCC review the enclosed map illustrating the proposed wellbore spacing unit.

Respectfully,

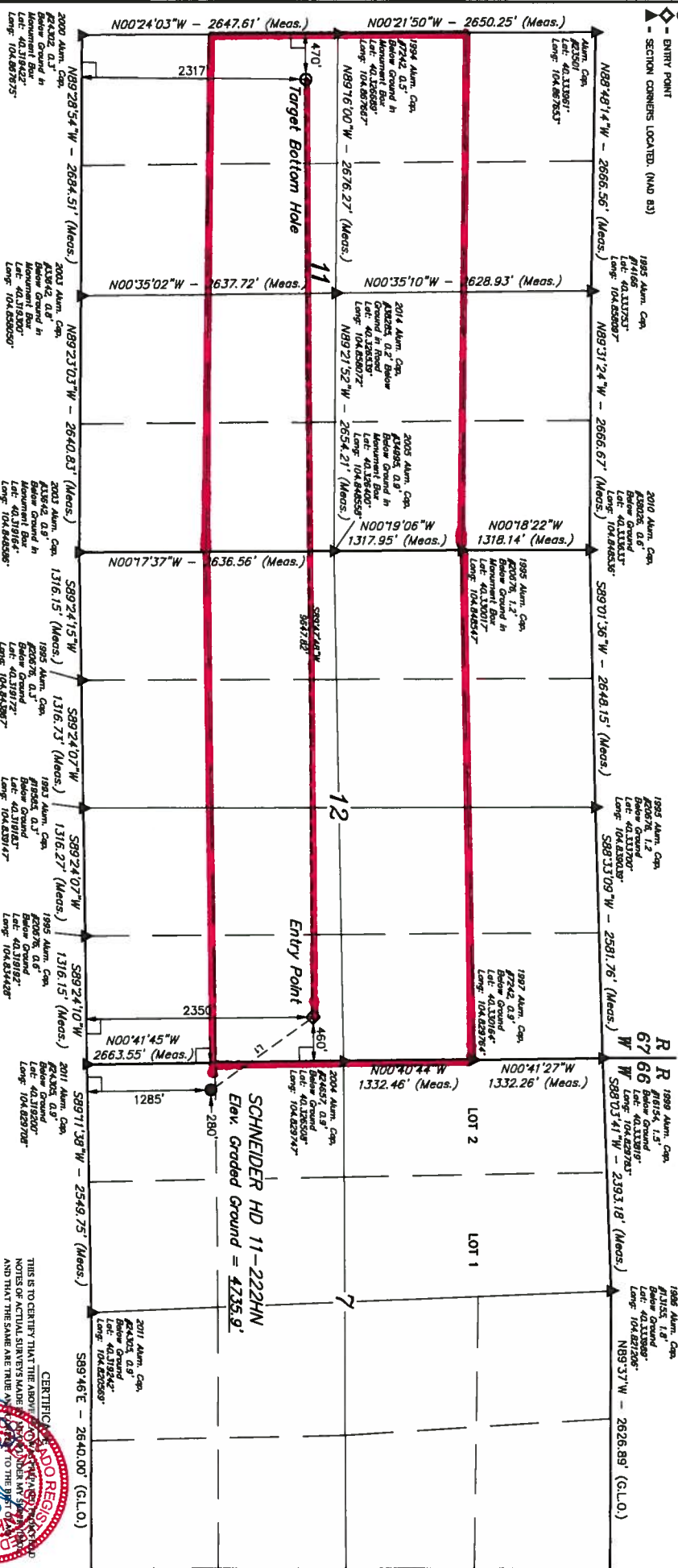
Callie Fiddes

Callie Fiddes
Regulatory Compliance Specialist
Great Western Operating Company, LLC

T4N, R66W, 6th P.M.

LEGEND:

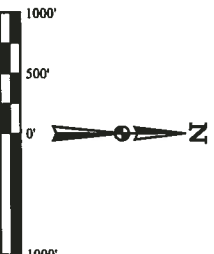
- 80' SYMBOL
- PROPOSED WELLHEAD
- TARGET BOTTOM HOLE
- ENTRY POINT
- SECTION CORNERS LOCATED (NAD 83)



BASIS OF BEARINGS
BASIS OF ELEVATION

USGS COOPERATIVE BASE NETWORK CONTROL STATION,
DESIGNATION "VERMILYEA", NGS DATA SHEET LISTS THE
NAD 83 ELEVATION AS BEING 5026 FEET.

UTAH
Corporate Office: 85 South 200 East
Vernal, UT 84078 • (435) 785-1017



LINE TABLE		
LINE	DIRECTION	LENGTH
L1	N45°28'23"W	1286.85'

NAD 83 (SURFACE LOCATION)			
LATITUDE = 40°19'21.83"	LONGITUDE = 104°49'43.40"	LATITUDE = 40°19'21.83"	LONGITUDE = 104°49'43.40"
NAD 83 (ENTRY POINT)			
LATITUDE = 40°19'21.83"	LONGITUDE = 104°49'43.40"	LATITUDE = 40°19'21.83"	LONGITUDE = 104°49'43.40"
NAD 83 (TARGET BOTTOM HOLE)			
LATITUDE = 40°19'21.83"	LONGITUDE = 104°49'43.40"	LATITUDE = 40°19'21.83"	LONGITUDE = 104°49'43.40"

PDOP = 1.2

GREAT WESTERN OPERATING COMPANY
SCHNEIDER HD 11-222HN
SW 1/4 SW 1/4 SECTION 7 T4N, R66W, 6th P.M.
WELD COUNTY, COLORADO
SURVEYED BY: GREG WEINER, J.S.
DRAWN BY: K.B.
SCALE: 1" = 1000'

CERTIFICATE
NOTES TO CERTIFY THAT THE ABOVE
IS A TRUE AND CORRECT COPY OF THE
ORIGINAL SURVEY RECORD AS
FILED IN THE PUBLIC RECORDS OF
WELD COUNTY, COLORADO
STATE OF COLORADO
RECORDED IN BOOK NO. 2835
PAGE 16
DATE 05-31-16

NORTH - 5280.00' (G.L.O.)