

1801 Broadway
Suite 500
Denver, Colorado 80202



Callie Fiddes
Regulatory Compliance Specialist
Tel: 303.398.0550
E-mail: cfiddes@gwogco.com

8/1/2016

Colorado Oil and Gas Conservation Commission
1120 Lincoln Street, Suite 801
Denver, Colorado 80203

RE: **Proposed Wellbore Spacing Unit**
Schneider HD 11-222HC
Codell New Drill

SWSW Section 7
Township 4N, Range 66W, 6th P.M.
Weld County, Colorado

Dear Director:

Great Western Operating Company, LLC is planning to drill the above captioned well in accordance with the provisions of COGCC Rule 318A.e.

Great Western proposed wellbore spacing unit consists of:

- **S2 Sec 11, S2 Sec 12**
- **640 acres**

The 30 day notification time period has passed and we have not received any objections to such well locations or proposed spacing unit, therefore Great Western hereby requests the Director to approve the above mentioned well. Great Western Operating Company, LLC respectfully requests that the COGCC review the enclosed map illustrating the proposed wellbore spacing unit.

Respectfully,

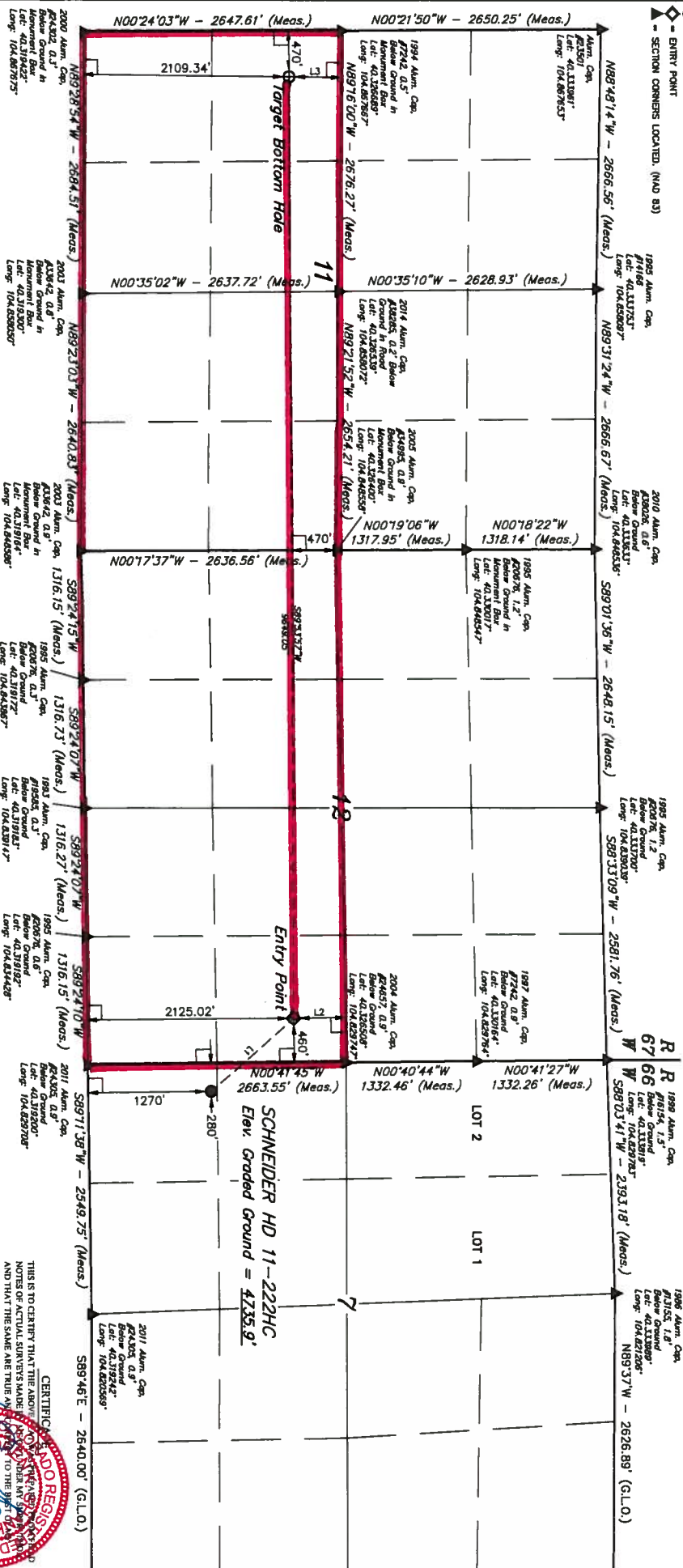
Callie Fiddes

Callie Fiddes
Regulatory Compliance Specialist
Great Western Operating Company, LLC

LEGEND.

- 90° SYMBOL
- PROPOSED WELLHEAD.
- TARGET BOTTOM HOLE.
- ENTRY POINT
- SECTION CORNERS LOCATED. (NAD 83)

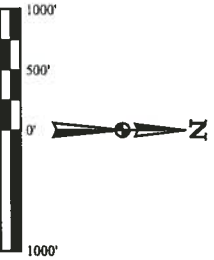
T4N, R66W, 6th P.M.



LINE TABLE	
LINE	DIRECTION LENGTH
L1	N44°34'18"W 1130.81'
L2	N00°32'58"W 536.15'
L3	N00°44'00"E 536.14'

BASIS OF BEARINGS IS A G.P.S. OBSERVATION
BASIS OF ELEVATION
USGS COOPERATIVE BASE NETWORK CONTROL STATION,
DESIGNATION "VERMILYEA" - NGDS DATA SHEET LISTS THE
NAVD 88 ELEVATION AS BEING 5026 FEET.

UTEL, LLC
Corporate Office: 25 South 200 East
Vernal, UT 84078 (435) 785-1017



NAD 83 (SURFACE LOCATION)	
LATITUDE = 40°19'11.88" (40.312688)	LATITUDE = 40°19'10.10" (40.312628)
LONGITUDE = 104°49'41.40" (104.828722)	LONGITUDE = 104°49'53.00" (104.831389)
NAD 83 (ENTRY POINT)	
LATITUDE = 40°19'11.75" (40.312708)	LATITUDE = 40°19'10.16" (40.312644)
LONGITUDE = 104°49'41.51" (104.828719)	LONGITUDE = 104°49'51.10" (104.830861)
NAD 83 (TARGET BOTTOM HOLE)	
LATITUDE = 40°19'10.69" (40.312192)	LATITUDE = 40°19'10.75" (40.312388)
LONGITUDE = 104°49'51.54" (104.865983)	LONGITUDE = 104°49'50.75" (104.865388)
NAD 83 (TARGET BOTTOM HOLE)	
LATITUDE = 40°19'10.75" (40.312388)	LATITUDE = 40°19'10.75" (40.312388)
LONGITUDE = 104°49'51.54" (104.865983)	LONGITUDE = 104°49'51.54" (104.865983)

PDOP = 1.2

GREAT WESTERN OPERATING COMPANY
SCHNEIDER HD 11-22ZHC
SW 1/4 SW 1/4, SECTION 7, T4N, R66W, 6th P.M.
WELD COUNTY, COLORADO
SURVEYED BY: GREG WEIMER, J.S.
DRAWN BY: K.B.
SCALE: 1" = 1000'

CERTIFICATE AND RECORD
NOTES TO CERTIFY THAT THE ABOVE
NOTES OF ACTUAL SURVEY MADE
AND THAT THE SAME ARE TRUE &
KNOWLEDGE AND BELIEF
STATE OF COLORADO
COUNTY OF WELD
RECORDED IN BOOK NO. 2028
PAGE 16
JAN 16 2016

NORTH - 5280.00' (G.L.O.)