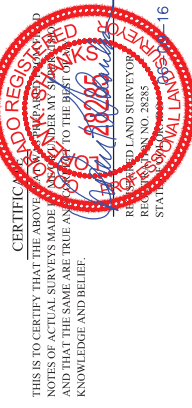
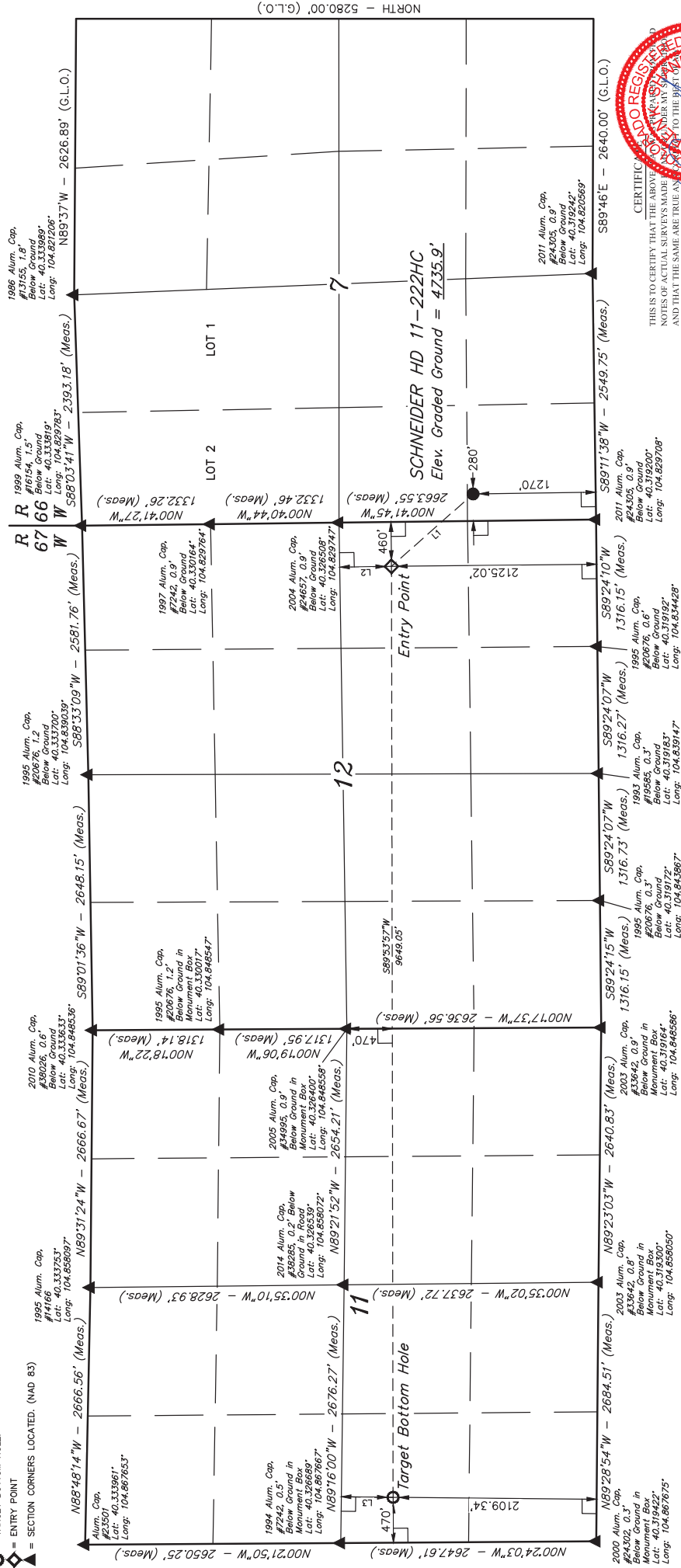


T4N, R66W, 6th P.M.

LEGEND:

- 90° SYMBOL
- PROPOSED WELLHEAD.
- TARGET BOTTOM HOLE.
- ENTRY POINT
- SECTION CORNERS LOCATED. (NAD 83)



LINE TABLE	
LINE	DIRECTION LENGTH
L1	N41°34'18\"W 1130.81'
L2	N00°52'58\"W 536.15'
L3	N00°44'00\"E 536.14'



BASIS OF BEARINGS  
BASIS OF ELEVATION

USGS COOPERATIVE BASE NETWORK CONTROL STATION,  
DESIGNATION "VERMILYEA", NGS DATA SHEET LISTS THE  
NAVD 88 ELEVATION AS BEING 5026 FEET.



UELS, LLC  
Corporate Office: 85 South 200 East  
Vernal, UT 84078 • (435) 789-1017

PDOP = 1.2

NAD 83 (SURFACE LOCATION)	NAD 83 (ENTRY POINT)	NAD 83 (TARGET BOTTOM HOLE)
LATITUDE = 40°19'21.68\"N (40.322689)	LATITUDE = 40°19'30.10\"N (40.325038)	LATITUDE = 40°19'30.69\"N (40.325192)
LONGITUDE = 104°49'43.40\"W (104.828722)	LONGITUDE = 104°49'53.00\"W (104.831389)	LONGITUDE = 104°51'57.54\"W (104.865983)
NAD 27 (SURFACE LOCATION)	NAD 27 (ENTRY POINT)	NAD 27 (TARGET BOTTOM HOLE)
LATITUDE = 40°19'21.75\"N (40.322708)	LATITUDE = 40°19'30.16\"N (40.325044)	LATITUDE = 40°19'30.75\"N (40.325208)
LONGITUDE = 104°49'41.51\"W (104.828197)	LONGITUDE = 104°49'51.10\"W (104.830861)	LONGITUDE = 104°51'55.64\"W (104.865456)

GREAT WESTERN OPERATING COMPANY

SCNEIDER HD 11-222HC  
SW 1/4 SW 1/4, SECTION 7, T4N, R66W, 6th P.M.

SURVEYED BY GREG WEIMER, J.S.  
DRAWN BY K.B.  
SCALE 1\"= 1000'

WELL LOCATION PLAT