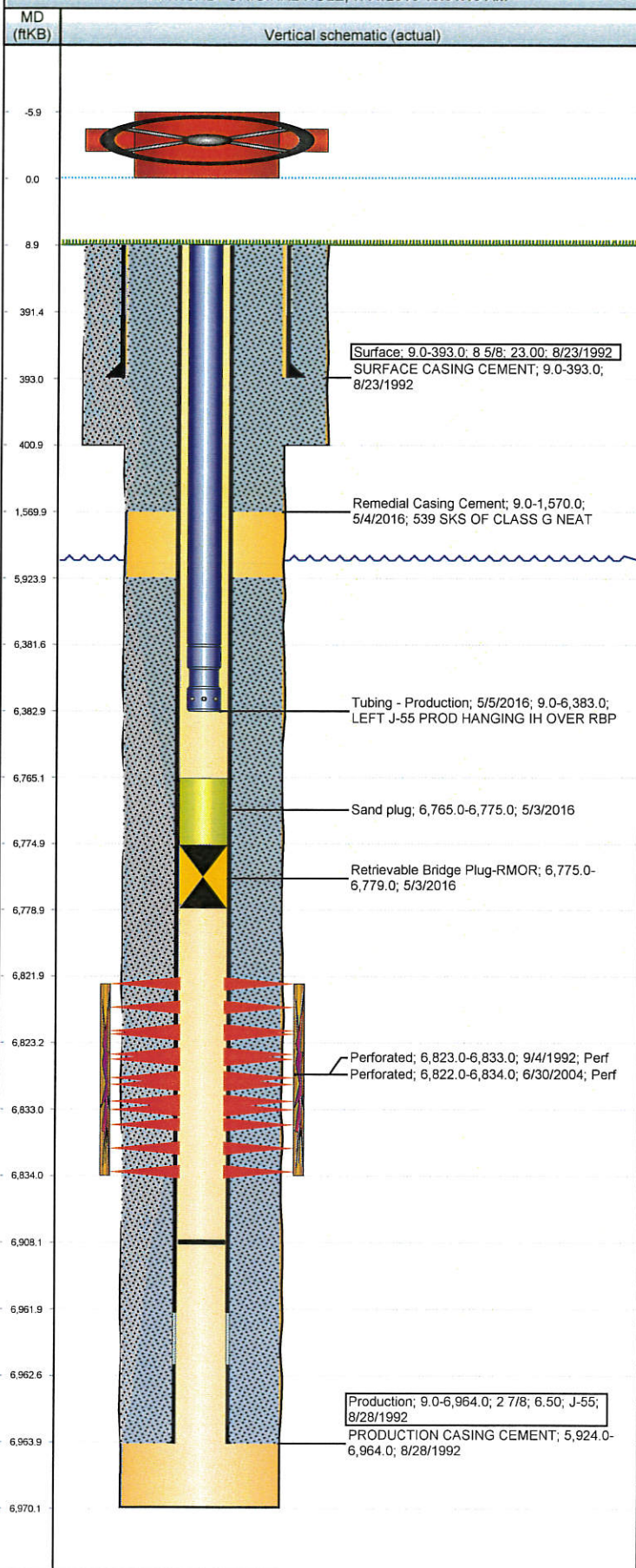


Well Name: SPIKE ST GWS C24-16

VERTICAL - ORIGINAL HOLE, 7/11/2016 10:51:19 AM



Well Header

API 05-123-15816	Business Unit DJ BASIN	District 15	Well Config VERTICAL
Original KB Elevation (ft) 4,747	KB - GL / MSL (ftKB) 9.00	Spud Date 8/22/1992	P & A Date
Comment			

Directions To Well

WCR 61 & 46, SOUTH 1.1 MILES SOUTHWEST 8/10 TO WINDMILL, EAST 3/10 INTO.

Current PBTD (ftKB)

ORIGINAL HOLE - 6,908.0

Surface Location (Congressional)

Quarter 1	Quarter 2	Quarter 3	Quarter 4	Section	Township	Twnshp N/...	Range	Rng E/W Dir
		SE	SE	24	4	N	64	W

Bottom Hole Location

North-South Distance (ft)	From N or S Line	East-West Distance (ft)	From E or W Line

Plug Back Total Depths

Date	Depth (ftKB)	Method	Com
8/28/1992	6,960.0	CASING TALLY	FLOAT SHOE W/ BAFFLE
9/4/1992	6,885.0	CASED HOLE LOG	DEPTH LOGGER ON CBL
7/17/2004	6,912.0	TAG	CLEAN OUT TO LAND TUBING
5/24/2011	6,911.0	TAG	WIRELINE MEASUREMENT.
5/2/2016	6,908.0	TAG	75' OF RATHOLE

Wellbore Sections

Section Des	Size (in)	Act Top, MD (ftKB)	Act Btm, MD (ftKB)
SURFACE	12 1/4	9	401
PRODUCTION	7 7/8	401	6,970

Zone Statuses

Zone Name	Status Date	Status	Fluid Type	Job	Prod Method
CODELL	10/9/1992	PR		DRILLING/COMPLETION - ORIGINAL, 8/22/1992...	
CODELL	7/7/2004	PR		RE-FRAC, 6/28/2004 00:00	

Casing Strings

Csg Des	Run Date	OD (in)	Wt/Len (lb/ft)	Grade	Top, MD (ftKB)	MD (ftKB)
Surface	8/23/1992	8 5/8	23.00		9.0	393.0
Production	8/28/1992	2 7/8	6.50	J-55	9.0	6,964.0

Cement

Des	Top (ftKB)	Btm (ftKB)
SURFACE CASING CEMENT	9.0	393.0
PRODUCTION CASING CEMENT	5,924.0	6,964.0
Remedial Casing Cement	9.0	1,570.0

Tubing Components

Item Des	OD (in)	Wt (lb/ft)	Grade	Jts	Len (ft)
Tubing	1.66	2.33	J-55	194	6,372.50
Notch Seat Nipple	1.66	2.33	N-80	1	1.50

Perforation Data

Zone	Bnch/Stg	Entered Shot Total	Top (ftKB)	Btm (ftKB)	Date
CODELL, ORIGINAL HOLE		48	6,822.00	6,834.00	6/30/2004
CODELL, ORIGINAL HOLE		40	6,823.00	6,833.00	9/4/1992

Stimulations & Treatments

Bnch/Stg	Date	Zone	Primary Job Type
	9/5/1992	CODELL, ORIGINAL HOLE	DRILLING/COMPLETION - ORIGINAL
Comment			

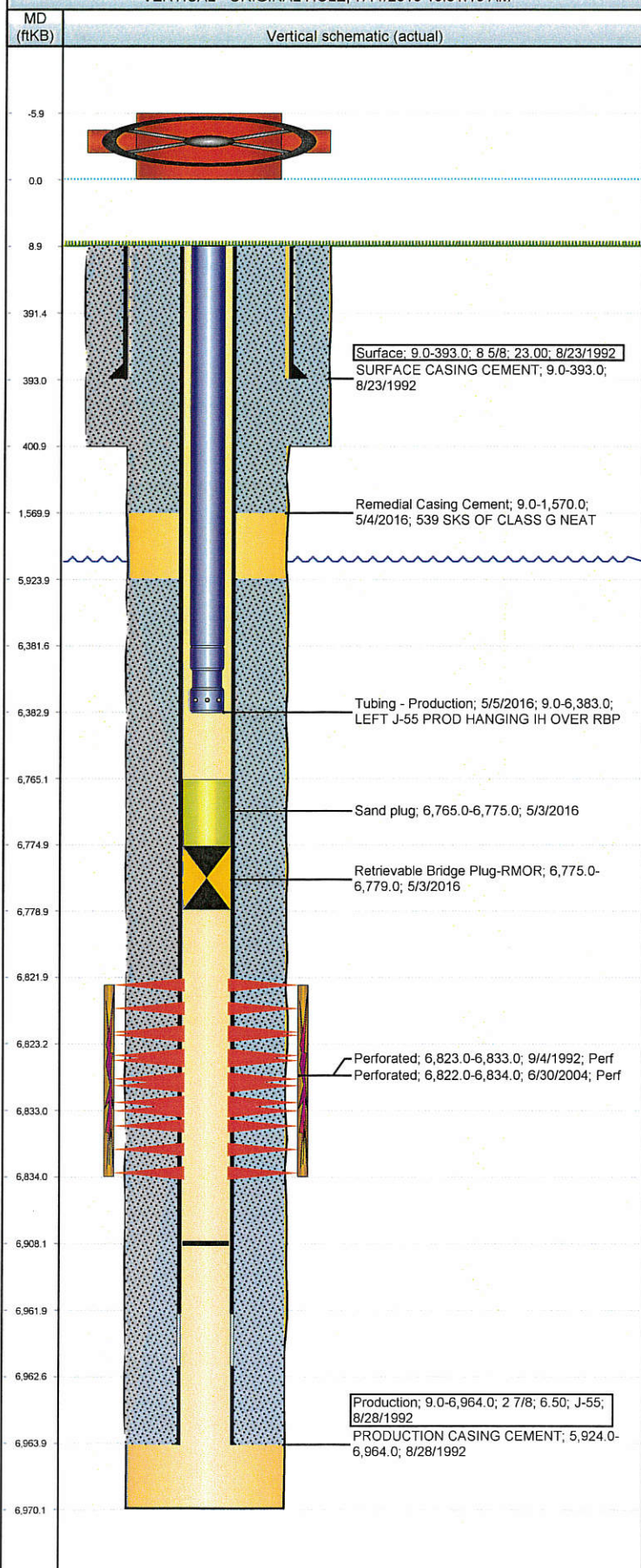
Total Add Amount Proppant 81000 lb	Total Clean Volume...	Vol Slurry Tot (gal) 43512.00	Vol Gas Tot (MCF)
Avg Treat Pressure (psi) 5,400.0	Max Treat Pressure (psi) 5,500.0	Avg Treat Rate (bbl/min) 15.00	Max Treat Rate (bbl/min) 15.90

Bnch/Stg	Date	Zone	Primary Job Type
	7/6/2004	CODELL, ORIGINAL HOLE	RE-FRAC
Comment			

Total Add Amount Proppant Ottawa 245440 lb	Total Clean Volume...	Vol Slurry Tot (gal) 130494.00	Vol Gas Tot (MCF)
Avg Treat Pressure (psi) 4,899.0	Max Treat Pressure (psi) 5,200.0	Avg Treat Rate (bbl/min) 13.60	Max Treat Rate (bbl/min) 14.00

Well Name: SPIKE ST GWS C24-16

VERTICAL - ORIGINAL HOLE, 7/11/2016 10:51:19 AM



Other In Hole

Run Date	Des	OD (in)	Top (ftKB)	Btm (ftKB)
5/3/2016	Retrievable Bridge Plug-RMOR	2.41	6,775.0	6,779.0
5/3/2016	Sand plug	2.41	6,765.0	6,775.0

Logs

Date	Type	Top, MD (ftKB)	Btm, MD (ftKB)
8/28/1992	COMPENSATED DENSITY	6,988.0	6,000.0
9/4/1992	CEMENT BOND	5,840.0	6,880.0
5/24/2011	GYRO	12.0	6,911.0
5/5/2016	CBL/CCL/GR	12.0	2,000.0