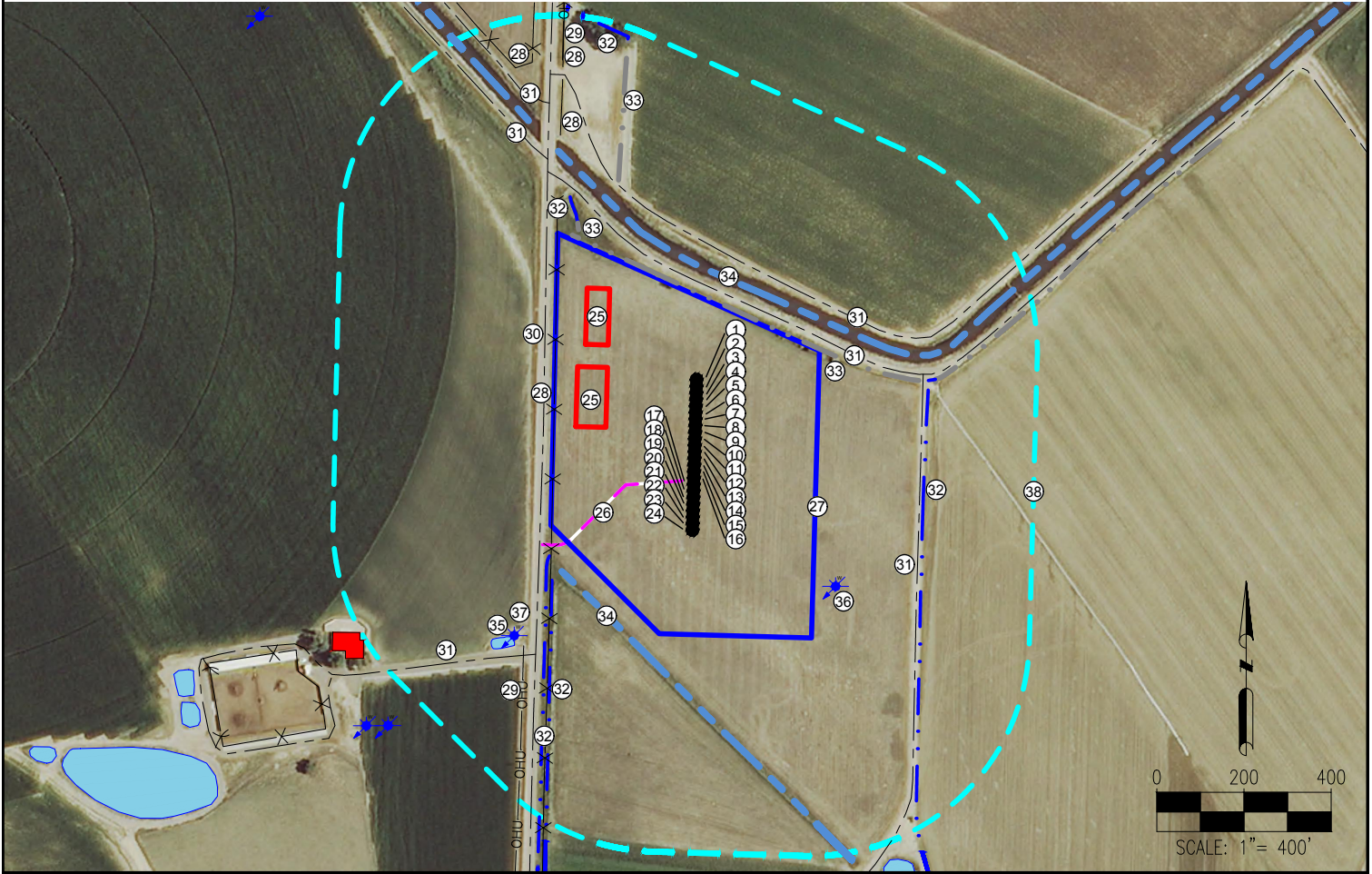


# THORNTON 28-H PAD LOCATION DRAWING



- |                        |  |  |
|------------------------|--|--|
| 1. THORNTON A-29-30HN  | 15. THORNTON O-29-30HN                               | 29. OVERHEAD UTILITIES ARE ±594' SW, ±947' NW  |
| 2. THORNTON B-29-30HC  | 16. THORNTON P-29-30HN                               | 30. COUNTY ROAD 29 IS ±336' W  |
| 3. THORNTON C-29-30HN  | 17. THORNTON Q-29-30HC                               | 31. PRIVATE ROADS ARE ±358' NE, ±436' NE, 519' E, 591' SW, ±750' NW, ±866' NW                    |
| 4. THORNTON D-29-30HN  | 18. THORNTON R-29-30HN                               | 32. DITCHES ARE ±410' SW, ±441' SW, ±528' E, ±588' NW, ±958' NW                                  |
| 5. THORNTON E-29-30HC  | 19. THORNTON S-29-30HN                               | 33. CONCRETE DITCHES ARE ±333' NE, ±547' NW, ±646' NE  |
| 6. THORNTON F-29-30HN  | 20. THORNTON T-29-30HC                               | 34. CANALS ARE ±394' NE, ±409' SW  |
| 7. THORNTON G-29-30HN  | 21. THORNTON U-29-30HN                               | 35. POND IS ±595' SW   |
| 8. THORNTON H-29-30HC  | 22. THORNTON V-29-30HN                               | 36. WATER WELL (PERMIT #79) IS ±448' SE (DOES NOT EXIST AT THIS LOCATION PER FIELD VERIFICATION) |
| 9. THORNTON I-29-30HN  | 23. THORNTON W-29-30HC                               | 37. WATER WELL (FIELD VERIFIED) IS ±591' SW  |
| 10. THORNTON J-29-30HN | 24. THORNTON X-29-30HN                               | 38. 500' RADIUS  |
| 11. THORNTON K-29-30HC | 25. PROPOSED FACILITY                                |  |
| 12. THORNTON L-29-30HN | 26. PROPOSED ACCESS ROAD                             |  |
| 13. THORNTON M-29-30HN | 27. DISTURBANCE AREA                                 |  |
| 14. THORNTON N-29-30HC | 28. FENCES ARE ±324' W, ±788' NW, ±933' NW, ±967' NW |  |

## LEGEND:

- = PROPOSED WELL
- = WATER WELL
- = EXISTING ROAD
- = PROPOSED ROAD
- = DITCH
- = CONCRETE DITCH
- = CANAL
- = FENCE
- = OVERHEAD UTILITY

- = DISTURBANCE AREA
- = 500' RADIUS
- = PROPOSED FACILITY BERM
- = POND
- = BUILDING UNIT

## MEASURED FROM NEAREST WELL OR FACILITY:

- BUILDING ±701' SW
- BUILDING UNIT ±701' SW
- PUBLIC ROAD (COUNTY ROAD 29) ±43' W
- PROPERTY LINE (HIRSCH, JACOB W III) ±59' W
- UTILITY (POWERLINE) ±470' SW
- RAILROAD ±5280' E

## MEASURED FROM NEAREST EDGE OF DISTURBANCE:

- SURFACE WATER (CONCRETE DITCH) ±4' N

## MEASURED FROM NEAREST WELL:

- |                              |                   |
|------------------------------|-------------------|
| WATER WELL ±475' SW          | SWL = N/A         |
| PERMIT: N/A (FIELD VERIFIED) | RECEIPT: N/A      |
| WATER WELL ±830' SW          | SWL = 1'          |
| PERMIT: 251927               | RECEIPT: 0512271B |

## REFERENCE LOCATION

### THORNTON L-29-30HN

- LAT: 40.548418°
- LONG: 104.791539°
- ELEVATION: 4905'
- 1719' FNL & 355' FWL
- PDOP: 1.8
- GPS OPERATOR: ALEC SHULL

## DISTURBANCE ACREAGE:

- 10.21 ACRES DRILLING OPERATIONS
- 5.11 ACRES INTERIM RECLAIM

## CURRENT SURFACE USE:

HAY MEADOW

## FUTURE SURFACE USE:

HAY MEADOW

PREPARED BY:



FIELD DATE:

01-06-16

DRAWING DATE:

02-19-16

BY:

KAD

CHECKED BY:

TJN

SITE NAME:

THORNTON 28-H PAD

SURFACE LOCATION:

SW 1/4 NW 1/4 SEC. 28, T7N, R66W, 6TH P.M.  
WELD COUNTY, COLORADO

PREPARED FOR:

