

NOTES:

1. DISTANCES ARE MEASURED PERPENDICULAR TO NEAREST SECTION LINE AND ARE SHOWN ON THE SAME SIDE OF THE SECTION LINE WHERE THE WELL IS LOCATED.
2. THIS MAP DOES NOT REPRESENT A MONUMENTED BOUNDARY SURVEY. SIXTEENTH CORNER LOCATIONS ARE COMPUTED, UNLESS OTHERWISE NOTED.
3. BOTTOM HOLE LOCATIONS AND HORIZONTAL COMPLETION ZONE PROVIDED BY OTHERS.

BASIS OF BEARING:

THE NORTH LINE OF THE NORTHEAST QUARTER OF SECTION 8-T5N-R66W BEARS N89°02'43"E BETWEEN THE NORTH QUARTER CORNER OF SECTION 8 MONUMENTED WITH 3 1/4" A.C. IN R.B. STAMPED "PLS 25381" AND THE NORTHEAST CORNER OF SECTION 8 MONUMENTED WITH A 3 1/4" A.C. IN R.B. "LS 22098" BASED ON THE COLORADO NORTH 0501 STATE PLANE COORDINATE SYSTEM.

ELEVATIONS ARE BASED ON NAVD 88, AS OBSERVED FROM GPS OBSERVATIONS

LEGEND

- ALIQUOT CORNER A.C. ALUMINUM CAP
- ⊙ BOTTOM HOLE R.B. RANGE BOX
- PROPOSED WELL

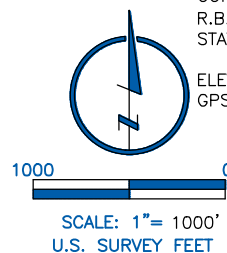
LAND SURVEYOR'S CERTIFICATION

LAMP, RYNEARSON & ASSOCIATES, INC., OF FT. COLLINS, COLORADO HAS, IN ACCORDANCE WITH A REQUEST FROM DUSTIN DYK AT EXTRACTION OIL & GAS, DETERMINED THE SURFACE LOCATION OF THE WELL DESIGNATED AS TC-AIMS C5-9-11 TO BE 2606' FROM THE NORTH LINE AND 1192' FROM THE EAST LINE OF SECTION 8, TOWNSHIP 5 NORTH, RANGE 66 WEST OF THE 6TH P.M., WELD COUNTY, COLORADO.



FRANK A. KOHL
COLORADO PLS 37067

DATE OF SURVEY: 9/18/2013 AND 12/10/13 (SECTION CONTROL)
DATE OF SURVEY: 7/30/14 (WELL LOCATION)

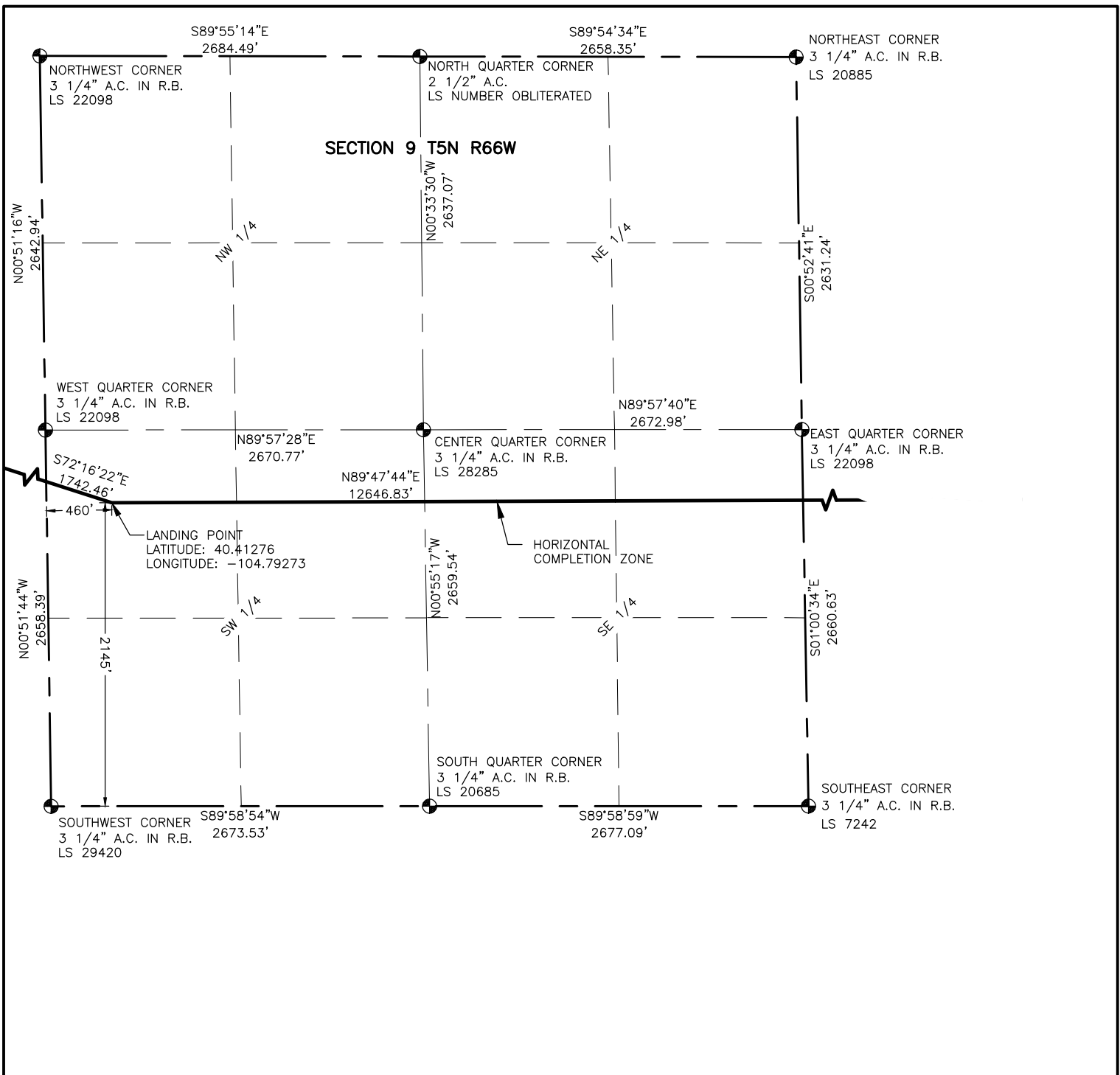


LAMP RYNEARSON
& ASSOCIATES




4715 Innovation Drive 970.226.0342 | P
Fort Collins, CO 80525 970.226.0879 | F
www.LRA-Inc.com

Proposed Well Location Exhibit
TC-Aims C5-9-11
1 of 4

drawn by	date	cogcc id	project - task number	book and page	surface - location
KJW	07/02/15	436824	0213054.01		SE/4, NE/4, SEC 8 T5N R66W
path\filename P:_Engineering\0213054.01\DRAWINGS\EXHIBITS\0213054-01EXWPC19.dwg					

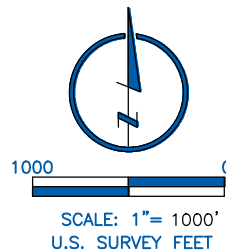


LEGEND

-  ALIQUOT CORNER
-  BOTTOM HOLE
-  PROPOSED WELL
- A.C. ALUMINUM CAP
- R.B. RANGE BOX

NOTES:

1. DISTANCES ARE MEASURED PERPENDICULAR TO NEAREST SECTION LINE AND ARE SHOWN ON THE SAME SIDE OF THE SECTION LINE WHERE THE WELL IS LOCATED.
2. THIS MAP DOES NOT REPRESENT A MONUMENTED BOUNDARY SURVEY. SIXTEENTH CORNER LOCATIONS ARE COMPUTED, UNLESS OTHERWISE NOTED.
3. BOTTOM HOLE LOCATIONS AND HORIZONTAL COMPLETION ZONE PROVIDED BY OTHERS.

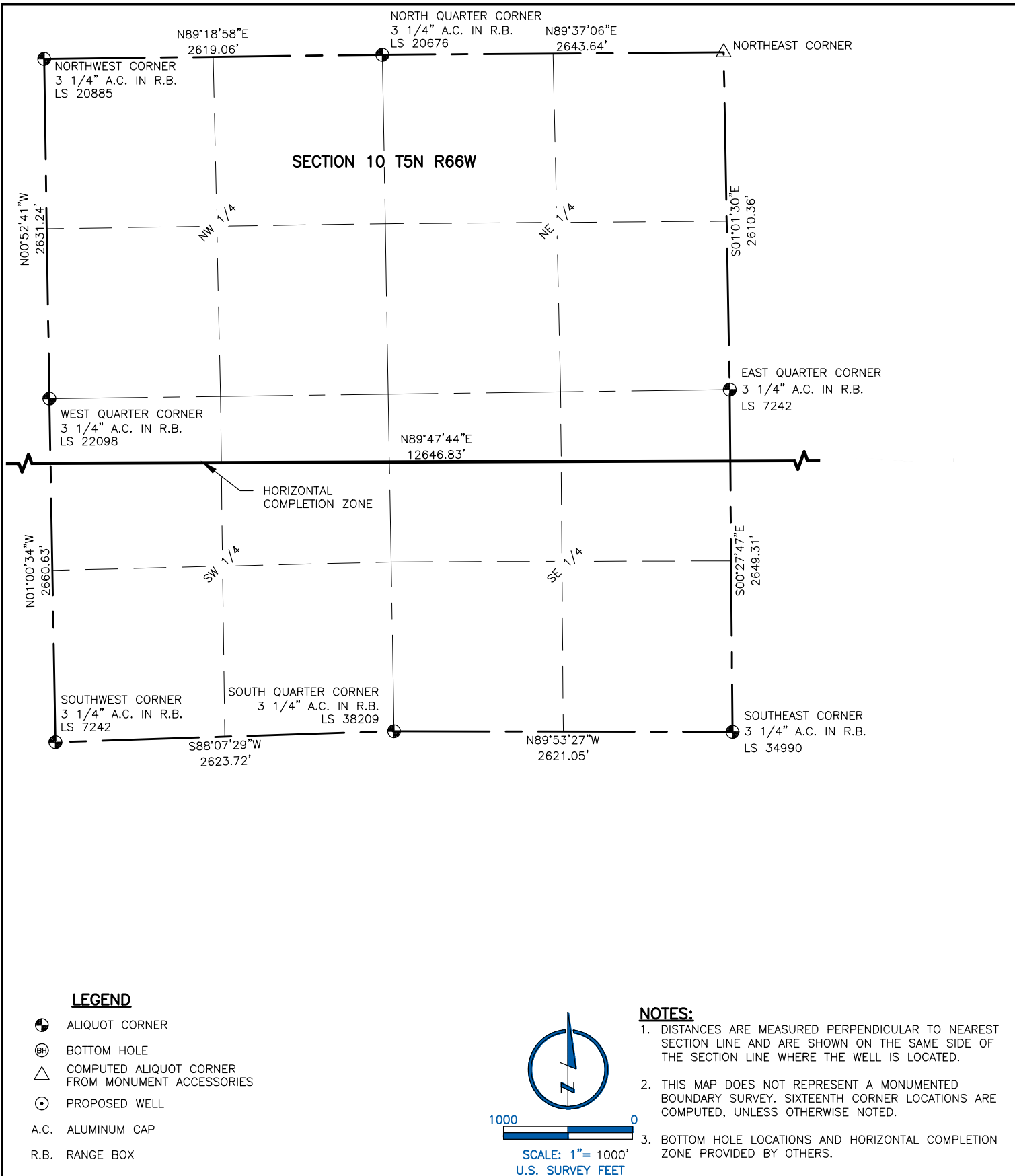


LAMP RYNEARSON
& ASSOCIATES

4715 Innovation Drive 970.226.0342 | P
Fort Collins, CO 80525 970.226.0879 | F
www.LRA-Inc.com

Proposed Well Location Exhibit
TC-Aims C5-9-11
2 of 4

drawn by	date	cogcc id	project - task number	book and page	surface - location
KJW	07/02/15	436824	0213054.01		SE/4, NE/4, SEC 8 T5N R66W
path\filename P:_Engineering\0213054.01\DRAWINGS\EXHIBITS\0213054-01EXWPC20.dwg					



LAMP RYNEARSON
& ASSOCIATES

4715 Innovation Drive 970.226.0342 | P
Fort Collins, CO 80525 970.226.0879 | F
www.LRA-Inc.com

Proposed Well Location Exhibit
TC-Aims C5-9-11
3 of 4

drawn by

KJW

date

07/02/15

cogcc id

436824

project - task number

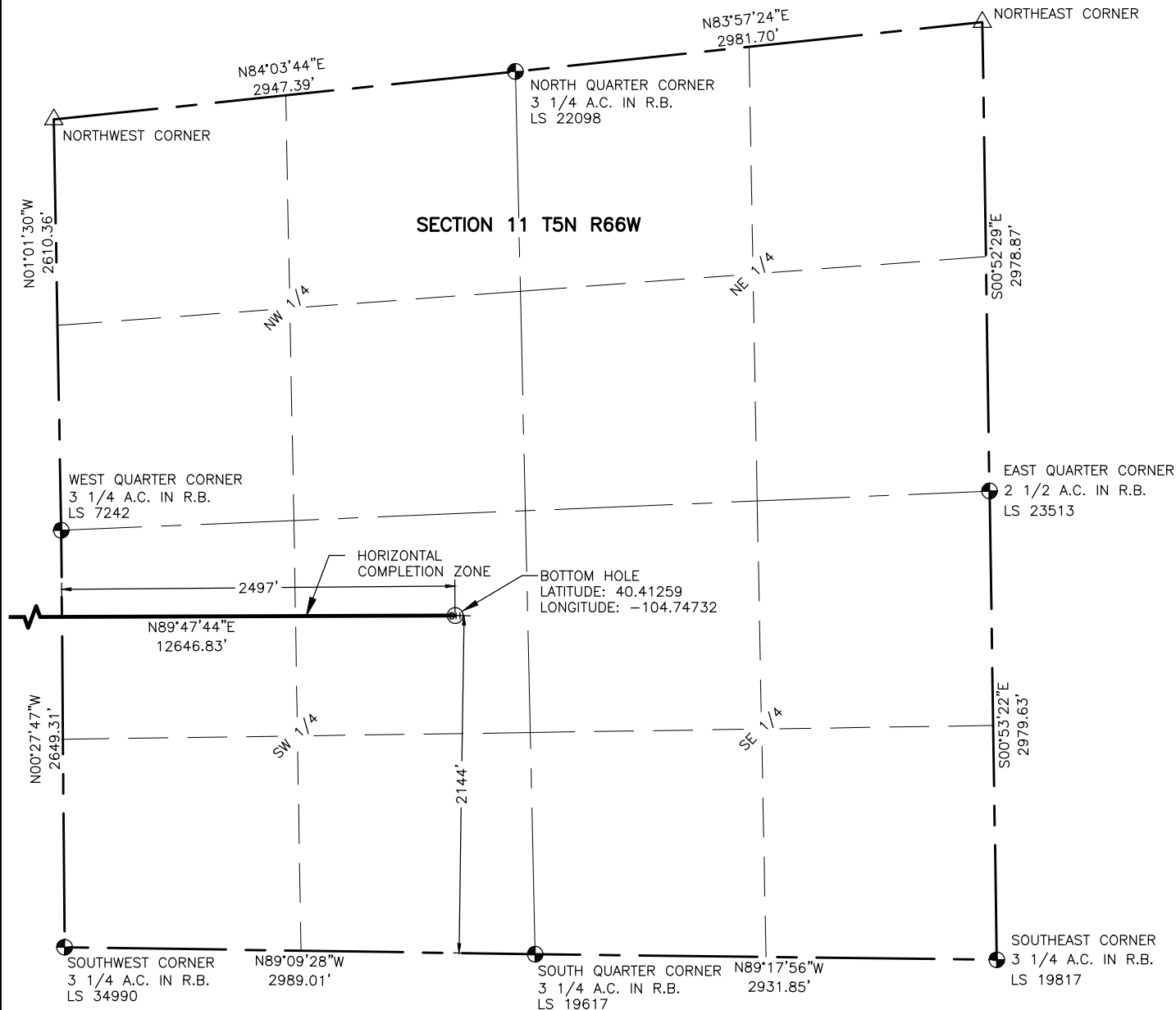
0213054.01

book and page

path\filename P:_Engineering\0213054.01\DRAWINGS\EXHIBITS\0213054-01EXWPC21.dwg

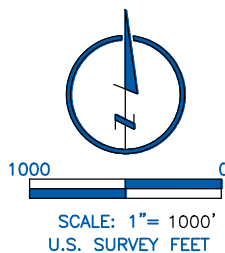
surface - location

SE/4, NE/4, SEC 8 T5N R66W



LEGEND

- ALIQUOT CORNER
- ⊙ BOTTOM HOLE
- △ COMPUTED ALIQUOT CORNER FROM MONUMENT ACCESSORIES
- PROPOSED WELL
- A.C. ALUMINUM CAP
- R.B. RANGE BOX



NOTES:

1. DISTANCES ARE MEASURED PERPENDICULAR TO NEAREST SECTION LINE AND ARE SHOWN ON THE SAME SIDE OF THE SECTION LINE WHERE THE WELL IS LOCATED.
2. THIS MAP DOES NOT REPRESENT A MONUMENTED BOUNDARY SURVEY. SIXTEENTH CORNER LOCATIONS ARE COMPUTED, UNLESS OTHERWISE NOTED.
3. BOTTOM HOLE LOCATIONS AND HORIZONTAL COMPLETION ZONE PROVIDED BY OTHERS.



LAMP RYNEARSON
& ASSOCIATES

4715 Innovation Drive 970.226.0342 | P
Fort Collins, CO 80525 970.226.0879 | F
www.LRA-Inc.com

Proposed Well Location Exhibit
TC-Aims C5-9-11
4 of 4

drawn by

KJW

date

07/02/15

cogcc id

436824

project - task number

0213054.01

book and page

surface - location

SE/4, NE/4, SEC 8 T5N R66W

path\filename P:_Engineering\0213054.01\DRAWINGS\EXHIBITS\0213054-01EXWPC21A.dwg