



July 8, 2016

Mr. Matthew Lepore, Director  
Colorado Oil & Gas Conservation Commission  
1120 Lincoln Street, Ste. 801  
Denver, Colorado 80203

**RE: Rule 318.A.e.:**

TC-Aims 1-9-11  
TC-Aims C4-9-11  
TC-Aims 2-9-11  
TC-Aims 3-9-11  
TC-Aims C5-9-11  
TC-Aims 4-9-11

Surface Location: SE/4 NE/4, Section 8, Township 5 North, Range 66 West, Weld County, CO

Dear Mr. Lepore,

Extraction Oil and Gas is planning to drill the captioned horizontal wells in accordance with the provision of COGCC Rule 318A.e.

The proposed wellbore spacing unit consists of:

Section 9-5N-66W: N/2S/2 & S/2N/2  
Section 10-5N-66W: N/2S/2 & S/2N/2  
Section 11-5N-66W: S/2NW/4 & N/2SW/4

The spacing unit is an 800-acre wellbore spacing unit for the Niobrara and Codell formations.

Extraction Oil and Gas hereby certifies to the Director that all Owners within the proposed spacing unit above were notified and 30 days have passed without objection.

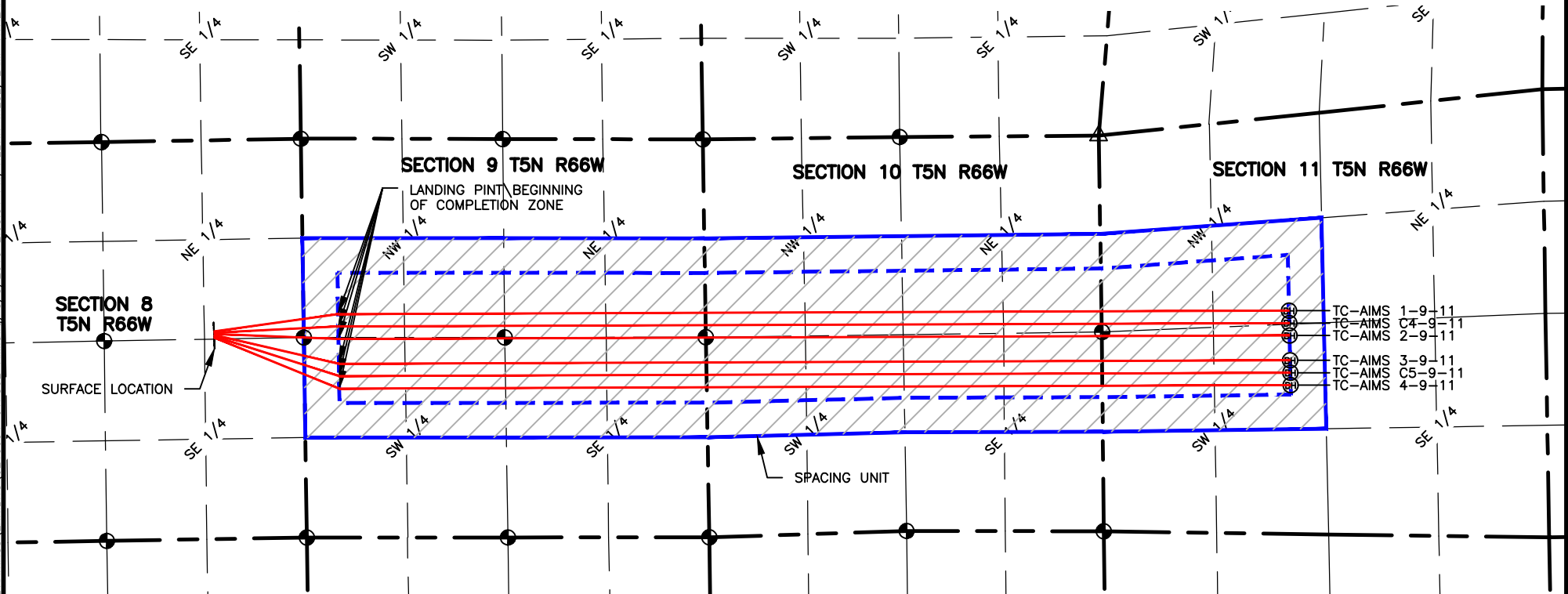
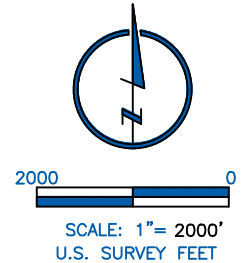
If you have any questions or issues regarding this permit, please contact Alyssa Andrews at (720) 481-2379.

Sincerely,

Alyssa Andrews  
Regulatory Analyst  
Extraction Oil & Gas, LLC

NAME: AIMS  
 SPACING UNIT: S/2 NW/4, S/2 NE/4, N/2 SW/4, N/2 SE/4, SEC 9; S/2 NW/4, S/2 NE/4, N/2 SW/4, N/2 SE/4 SEC 10;  
 S/2 NW/4, N/2 SW/4 SEC 11; T5N, R66W;  
 UNIT ACREAGE: 800

| WELL NAME       | SURFACE LOCATION |      |       |      | LANDING POINT\BEGIN HORIZONTAL COMPLETION ZONE |      |       |      | BOTTOM HOLE\END HORIZONTAL COMPLETION ZONE |      |       |      | COMPLETION ZONE BEARING | COMPLETION ZONE LENGTH |
|-----------------|------------------|------|-------|------|--|------|-------|------|--|------|-------|------|-------------------------|------------------------|
|                 | DIST.            | DIR. | DIST. | DIR. | DIST.  | DIR. | DIST. | DIR. | DIST.                                      | DIR. | DIST. | DIR. |                         |                        |
| TC-AIMS 1-9-11  | 2542'            | FNL  | 1193' | FEL  | 2330'  | FNL  | 460'  | FWL  | 2576'                                      | FNL  | 2488' | FWL  | N89°47'44"E             | 12640.78'              |
| TC-AIMS C4-9-11 | 2558'            | FNL  | 1193' | FEL  | 2495'  | FNL  | 460'  | FWL  | 2740'                                      | FNL  | 2489' | FWL  | N89°47'44"E             | 12642.00'              |
| TC-AIMS 2-9-11  | 2574'            | FNL  | 1192' | FEL  | 2640'  | FSL  | 460'  | FWL  | 2639'                                      | FNL  | 2490' | FWL  | N89°47'44"E             | 12643.22'              |
| TC-AIMS 3-9-11  | 2590'            | FNL  | 1192' | FEL  | 2310'  | FSL  | 460'  | FWL  | 2309'                                      | FSL  | 2495' | FWL  | N89°47'44"E             | 12645.63'              |
| TC-AIMS C5-9-11 | 2606'            | FNL  | 1192' | FEL  | 2145'  | FSL  | 460'  | FWL  | 2144'                                      | FSL  | 2497' | FWL  | N89°47'44"E             | 12646.83'              |
| TC-AIMS 4-9-11  | 2622'            | FNL  | 1191' | FEL  | 1980'  | FSL  | 460'  | FWL  | 1979'                                      | FSL  | 2500' | FWL  | N89°47'44"E             | 12648.03'              |



**LAMP RYNEARSON**  
 & ASSOCIATES

4715 Innovation Drive 970.226.0342 | P  
 Fort Collins, CO 80525 970.226.0879 | F  
[www.LRA-Inc.com](http://www.LRA-Inc.com)

Proposed Spacing Unit Exhibit  
 Triple Creek Directional  
 Aims

**LEGEND**

- ALIQUOT CORNER
- BOTTOM HOLE
- COMPUTED ALIQUOT CORNER
- SECTION LINE
- QUARTER SECTION LINE
- SIXTEENTH LINE

drawn by KJW date 8/5/15 cogcc id 436824 project - task number 0213054.01 book and page surface - location SE/4, NE/4, SEC 8 T5N R66W