

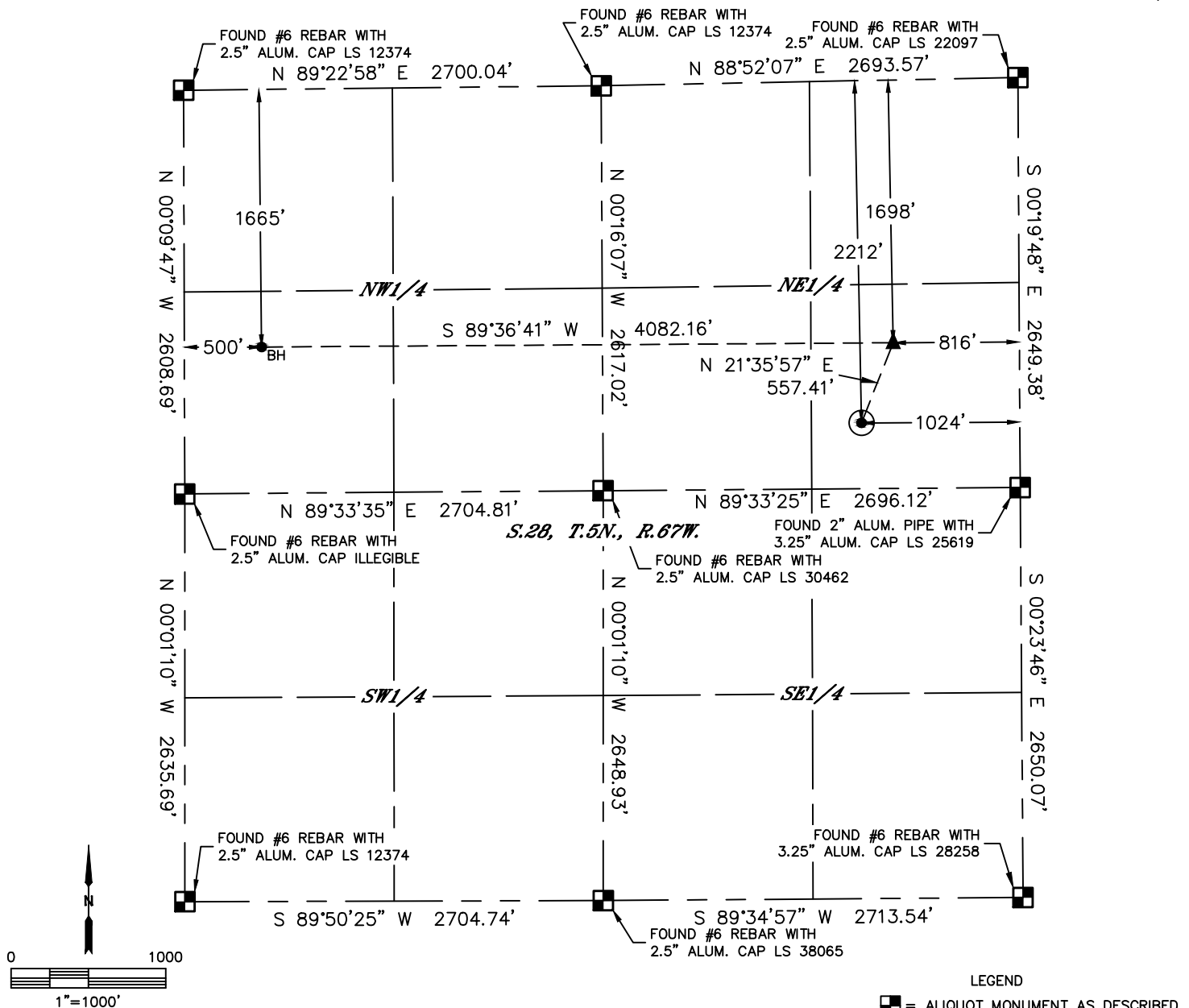


Lat40°, Inc. 6250 W. 10th Street, Unit 2, Greeley, CO 970-515-5294

WELL LOCATION CERTIFICATE

WILLIAMS 28V-234

SECTION: 28
TOWNSHIP: 5N
RANGE: 67W
6TH. P.M.
WELD COUNTY, CO



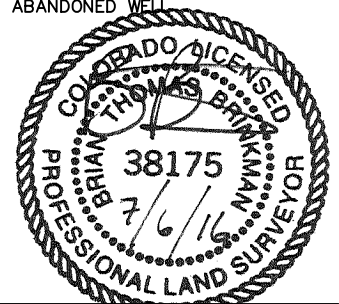
CLIENT: PDC ENERGY, INC.				LANDMAN: JEFF HINDMARSH			
INSTRUMENT OPERATOR: CHASE MILLER				SURVEY DATE: 10/20/2015		SURFACE USE: CROP LAND	
SHL FOOTAGE	SHL LAT°	SHL LONG°	SHL PDOP	SHL ELEV	SHL 1/4/1/4	SHL S-T-R	
2212 FNL 1024 FEL	40.37185	-104.89184	1.9	4905	SENE	28-5-67	

BHL FOOTAGE	BHL LAT°	BHL LONG°	BHL S-T-R	EP LAT°	EP LONG°	EP S-T-R
1665 FNL 500 FWL	40.37326	-104.90574	28-5-67	40.37326	-104.89109	28-5-67

NEAREST CULTURAL ITEMS	
BUILDING	±1273' NE
BUILDING UNIT	±1364' NE
HIGH OCCUPANCY BUILDING UNIT	5280'+
DESIGNATED OUTSIDE ACTIVITY AREA	5280'+
PUBLIC ROAD (COUNTY ROAD 17.5)	±1659' W
ABOVE GROUND UTILITY	±1018' E
RAILROAD	±3250' SW
PROPERTY LINE	±277' E

NOTE:
1) Bearings shown are Grid Bearings of the Colorado State Plane Coordinate System, North Zone, North American Datum 1983. The lineal dimensions as contained herein are based upon the "U.S. Survey Foot."
2) Distances to section lines measured at 90 degrees from said section lines.
3) Ground elevations are based on an observed GPS elevation (NAVD 1988 DATUM).
4) Latitude and Longitude shown are (NAD 83 DATUM).
5) IMPROVEMENTS: See LOCATION DRAWING for all visible improvements within 500' of oil and gas location.
6) This map does not represent a boundary survey.

- LEGEND
- = ALIQUOT MONUMENT AS DESCRIBED
 - = CALCULATED POSITION
 - = SURFACE HOLE LOCATION (SHL)
 - ▲ = ENTRY POINT LOCATION (EP)
 - BH = BOTTOM HOLE LOCATION (BHL)
 - ⊙ = EXISTING WELL
 - ⊙ = ABANDONED WELL



Brian T. Brinkman—On behalf of Lat40°, Inc.
Colorado Licensed Professional Land Surveyor No. 38175
DATE: 7/6/2016
PROJECT#: 2015141