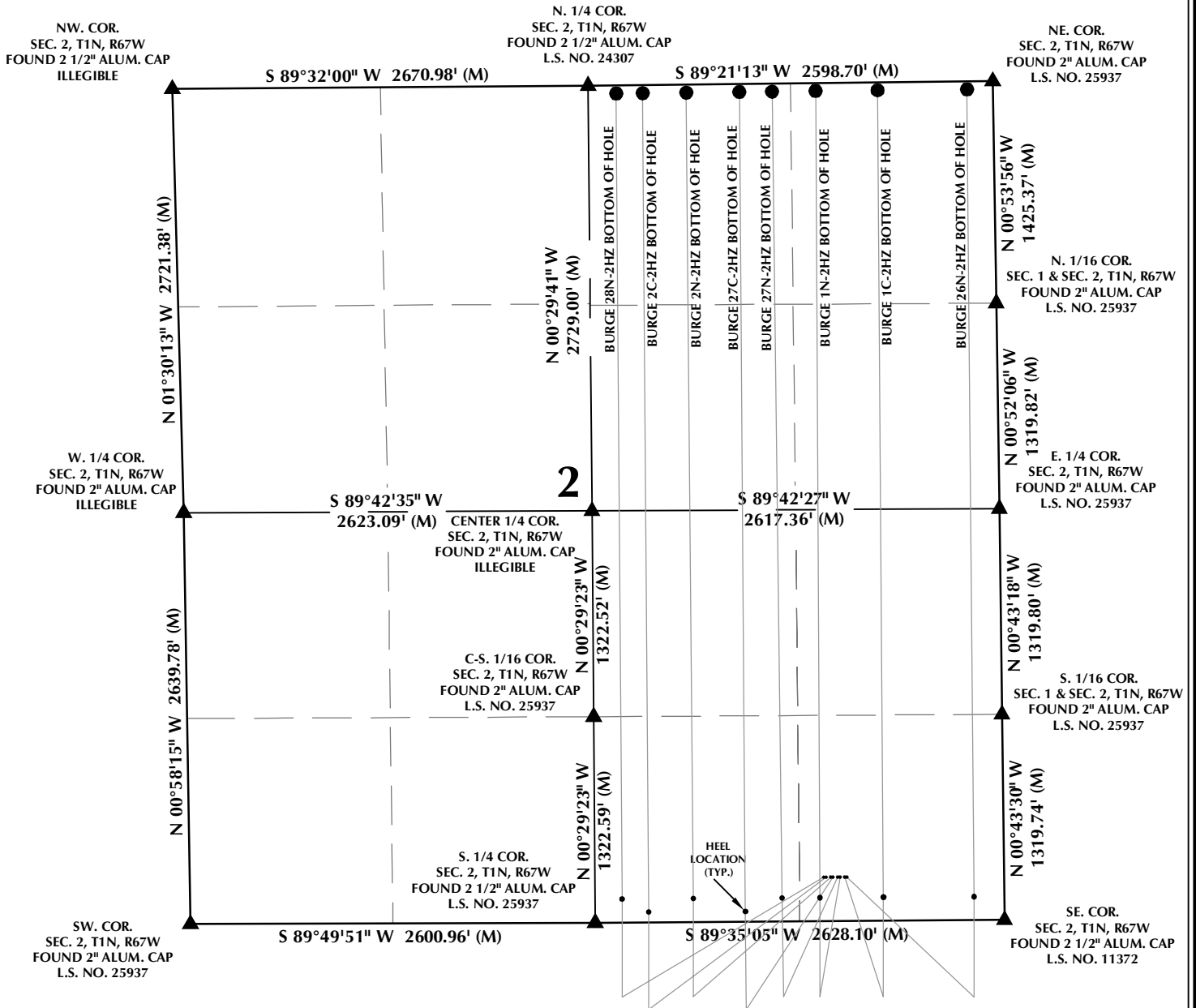


# MULTI-WELL PLAN SECTION 2, T1N, R67W



## WELL NOTES:

### BURGE 28N-2HZ

SURFACE: 281' FSL, 1158' FEL  
BOTTOM HOLE: 51' FNL, 2420' FEL

### BURGE 2C-2HZ

SURFACE: 281' FSL, 1143' FEL  
BOTTOM HOLE: 50' FNL, 2249' FEL

### BURGE 2N-2HZ

SURFACE: 281' FSL, 1113' FEL  
BOTTOM HOLE: 50' FNL, 1969' FEL

### BURGE 27C-2HZ

SURFACE: 281' FSL, 1098' FEL  
BOTTOM HOLE: 50' FNL, 1628' FEL

### BURGE 27N-2HZ

SURFACE: 281' FSL, 1068' FEL  
BOTTOM HOLE: 50' FNL, 1418' FEL

### BURGE 1N-2HZ

SURFACE: 281' FSL, 1053' FEL  
BOTTOM HOLE: 49' FNL, 1138' FEL

### BURGE 1C-2HZ

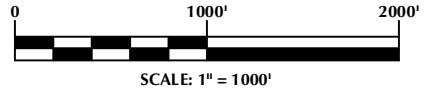
SURFACE: 281' FSL, 1023' FEL  
BOTTOM HOLE: 49' FNL, 740' FEL

### BURGE 26N-2HZ

SURFACE: 281' FSL, 1008' FEL  
BOTTOM HOLE: 50' FNL, 165' FEL

## NOTES:

1. ▲ INDICATES SECTION CORNER
2. ● INDICATES CALCULATED CORNER
3. BASIS OF BEARING DERIVED FROM COLORADO COORDINATE SYSTEM OF 1983 NORTH ZONE.
4. ALL MEASURED DISTANCES ARE GRID.
5. COMBINED SCALE FACTOR: .99972422 CALCULATED FROM THE SW. CORNER OF SECTION 2, T1N, R67W
6. WELL FOOTAGES ARE MEASURED AT RIGHT ANGLES TO THE SECTION LINES.



## WELL PAD - BURGE 27C-2HZ

MULTI-WELL PLAN  
BURGE 28N-2HZ, BURGE 2C-2HZ,  
BURGE 2N-2HZ, BURGE 27C-2HZ,  
BURGE 27N-2HZ, BURGE 1N-2HZ,  
BURGE 1C-2HZ & BURGE 26N-2HZ  
LOCATED IN SECTION 2  
T1N, R67W, 6TH P.M.  
WELD COUNTY, COLORADO

**Kerr-McGee Oil &  
Gas Onshore L.P.**

1099 18th Street  
Denver, Colorado 80202



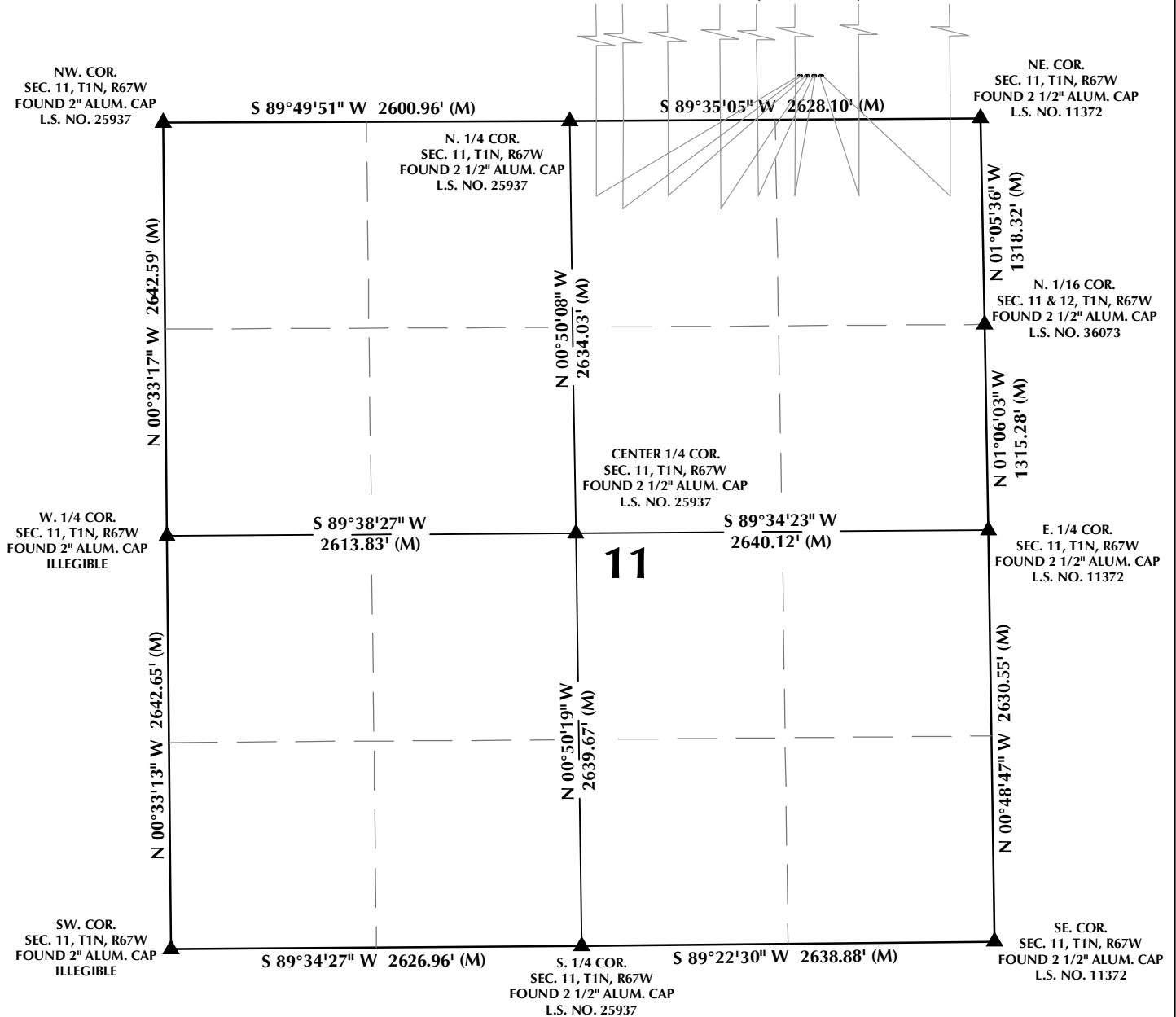
## CONSULTING, LLC

SHERIDAN OFFICE  
1095 Saberton Avenue  
Sheridan, Wyoming 82801  
Phone 307-674-0609

LOVELAND OFFICE  
1635 Foxtrail Drive, Suite 204  
Loveland, Colorado 80538  
Phone 970-776-4331

DRAFTED BY:	LMO	CHECKED BY:	RKF	SHEET NO:
DATE DRAFTED:	4/20/16	DATE SURVEYED:	3/22/16	1A
REVISED:	5/3/16	FILE NAME:	15-72	1A OF 1

# MULTI-WELL PLAN SECTION 11, T1N, R67W



## WELL NOTES:

### BURGE 28N-2HZ

SURFACE: 281' FSL, 1158' FEL  
BOTTOM HOLE: 51' FNL, 2420' FEL

### BURGE 2C-2HZ

SURFACE: 281' FSL, 1143' FEL  
BOTTOM HOLE: 50' FNL, 2249' FEL

### BURGE 2N-2HZ

SURFACE: 281' FSL, 1113' FEL  
BOTTOM HOLE: 50' FNL, 1969' FEL

### BURGE 27C-2HZ

SURFACE: 281' FSL, 1098' FEL  
BOTTOM HOLE: 50' FNL, 1628' FEL

### BURGE 27N-2HZ

SURFACE: 281' FSL, 1068' FEL  
BOTTOM HOLE: 50' FNL, 1418' FEL

### BURGE 1N-2HZ

SURFACE: 281' FSL, 1053' FEL  
BOTTOM HOLE: 49' FNL, 1138' FEL

### BURGE 1C-2HZ

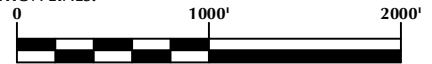
SURFACE: 281' FSL, 1023' FEL  
BOTTOM HOLE: 49' FNL, 740' FEL

### BURGE 26N-2HZ

SURFACE: 281' FSL, 1008' FEL  
BOTTOM HOLE: 50' FNL, 165' FEL

## NOTES:

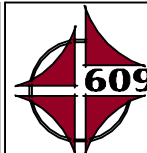
- ▲ INDICATES SECTION CORNER
- INDICATES CALCULATED CORNER
- BASIS OF BEARING DERIVED FROM COLORADO COORDINATE SYSTEM OF 1983 NORTH ZONE.
- ALL MEASURED DISTANCES ARE GRID.
- COMBINED SCALE FACTOR: .99972422 CALCULATED FROM THE SW. CORNER OF SECTION 2, T1N, R67W
- WELL FOOTAGES ARE MEASURED AT RIGHT ANGLES TO THE SECTION LINES.



## WELL PAD - BURGE 27C-2HZ

MULTI-WELL PLAN  
BURGE 28N-2HZ, BURGE 2C-2HZ,  
BURGE 2N-2HZ, BURGE 27C-2HZ,  
BURGE 27N-2HZ, BURGE 1N-2HZ,  
BURGE 1C-2HZ & BURGE 26N-2HZ  
LOCATED IN SECTION 2  
T1N, R67W, 6TH P.M.  
WELD COUNTY, COLORADO

**Kerr-McGee Oil &  
Gas Onshore L.P.**  
1099 18th Street  
Denver, Colorado 80202



## CONSULTING, LLC

SHERIDAN OFFICE  
1095 Saberton Avenue  
Sheridan, Wyoming 82801  
Phone 307-674-0609

LOVELAND OFFICE  
1635 Foxtrail Drive, Suite 204  
Loveland, Colorado 80538  
Phone 970-776-4331

DRAFTED BY:	LMO	CHECKED BY:	RKF	SHEET NO:
DATE DRAFTED:	4/20/16	DATE SURVEYED:	3/22/16	<b>1B</b>
REVISED:	5/3/16	FILE NAME:	15-72	1B OF 1