

July 18, 2016



410 17th Street, Suite 1400
Denver, CO 80202
(720) 440-6100 phone
(720) 305-0804 fax

Bonanza creek.com

Colorado Oil and Gas Conservation Commission
The Chancery Building
1120 Lincoln Street, Suite 801
Denver, CO 80203
Matthew Lepore, Director

Re: Notice of 318A.a.(4)D. Proposed Niobrara Horizontal Wellbore Spacing Unit

Latham P41-T44-12HNB

SHL: NESE (1834' FSL, 709' FEL) Sec.1-T4N-R63W, Weld County, CO

Top of Production: (10' FNL, 1130' FEL) Sec. 12-T4N-R63W, Weld County, CO

Bottom of Production: (470' FSL, 1130' FEL) Sec. 12-T4N-R63W, Weld County, CO

Director Lepore:

Bonanza Creek Energy Operating Company LLC ("Bonanza") intends to permit, drill and operate the referenced Niobrara Horizontal Well. As defined by Colorado Oil and Gas Conservation Commission (COGCC) Rule 318A.a.(4)D., Bonanza proposes the following wellbore spacing unit:

E/2 Section 12, Township 4N, Range 63W and the SWSE, SESE of Section 1, Township 4N, Range 63W, Weld County, CO – containing 400 acres more or less

A map depicting the proposed wellbore spacing unit is attached, for your reference. Bonanza has notified the other owners in the unit and no objections were received. Copies of the notifications are maintained in Bonanza's files.

Bonanza respectfully requests that you review the enclosed wellbore spacing unit documentation and approve the Application for Permit to Drill.

Sincerely,

A handwritten signature in blue ink that reads 'Julie L. Vigil'.

Julie L. Vigil

Sr. Regulatory Specialist

BONANZA CREEK ENERGY OPERATING COMPANY LLC

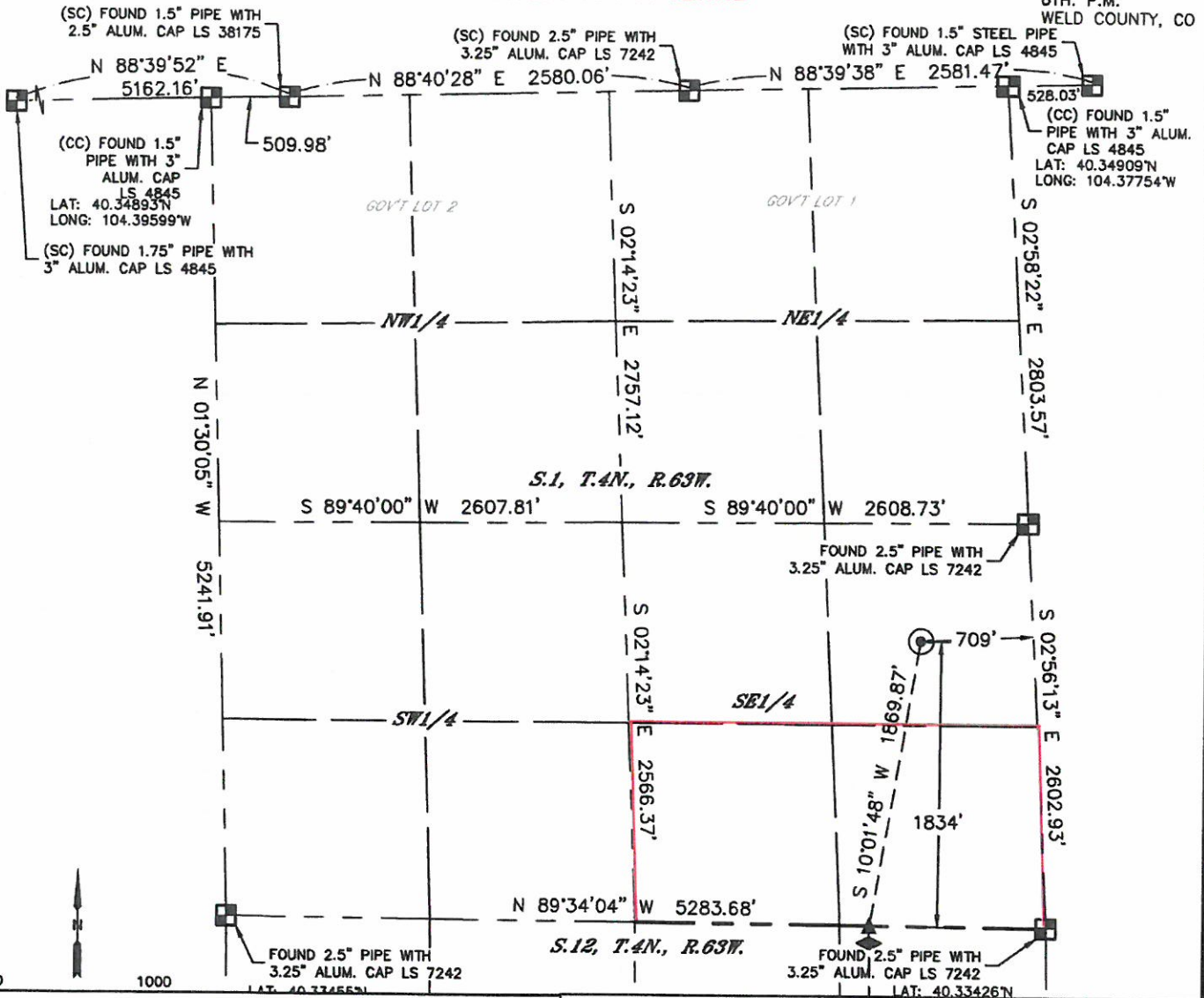


Lat40°, Inc. 6250 W. 10th Street, Unit 2, Greeley, CO 970-515-5294

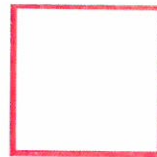
WELL LOCATION CERTIFICATE

LATHAM P41-T44-12HNB

SECTION: 1
TOWNSHIP: 4N
RANGE: 63W
6TH. P.M.
WELD COUNTY, CO



BONANZA CREEK



Wellbore Spacing Unit Outline



Proposed Spacing Unit Map

November 9, 2015 KK

Latham P41-T44-12HNB
E/2 Section 12, T4N-R63W
SWSE, SESE, Section 1, T4N-R63W
Weld County, Colorado

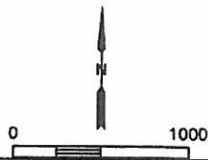
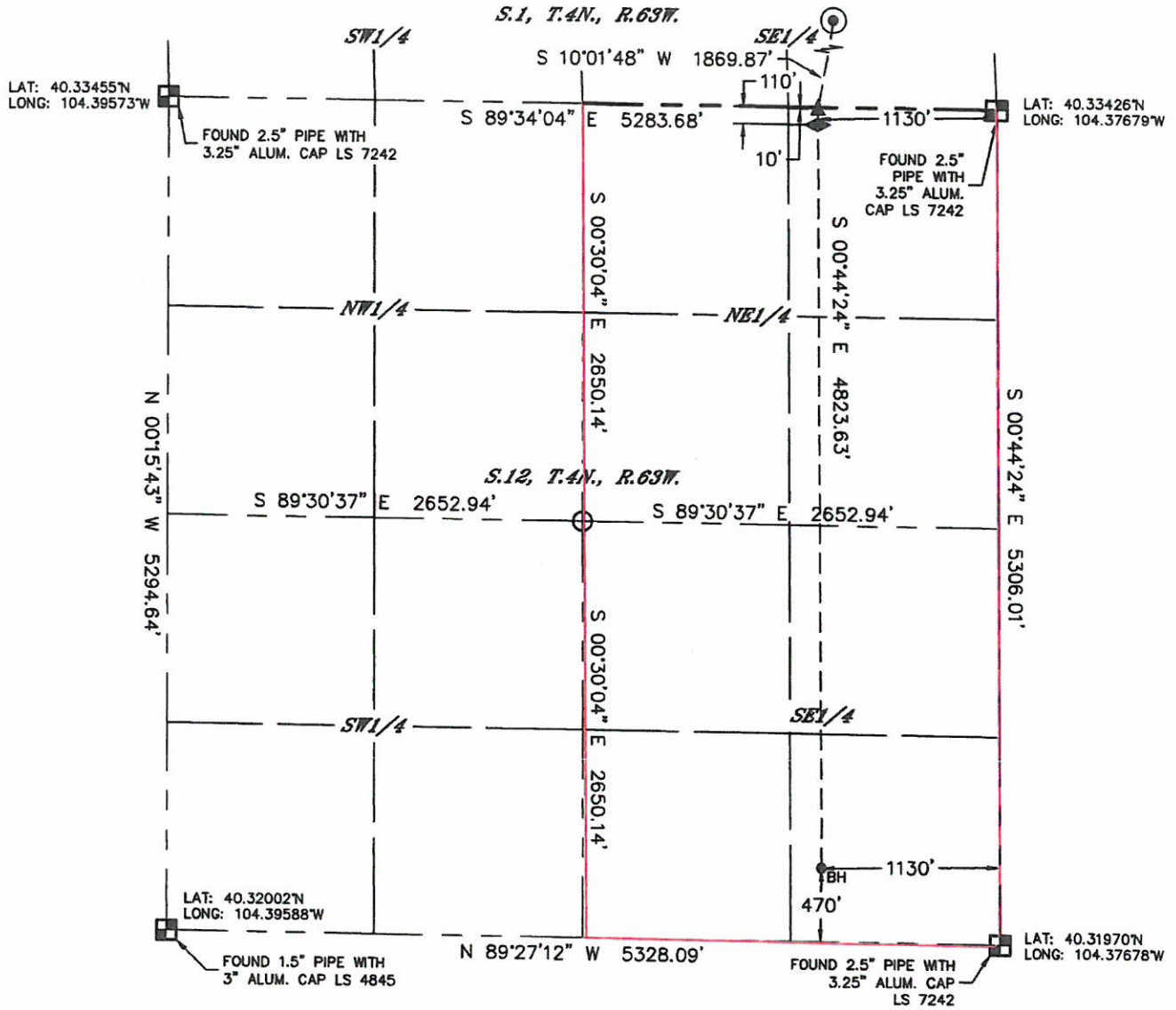


Lat40°, Inc. 6250 W. 10th Street, Unit 2, Greeley, CO 970-515-5294

WELL LOCATION CERTIFICATE

LATHAM P41-T44-12HNB

SECTION: 1
TOWNSHIP: 4N
RANGE: 63W
6TH. P.M.
WELD COUNTY, CO



Proposed Spacing Unit Map

November 9, 2015

Page 2