

Bayswater Exploration & Production, LLC

Well Name: **Thornton L-29-30HN**

Surface Location: Thornton 28-H Pad Sec.28-T7N-R66W

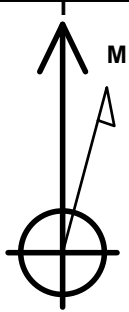
North American Datum 1983 , US State Plane 1983, Colorado Northern Zone

Ground Elevation: 4905.0

+N/-S	+E/-W	Northing	Easting	Latitude	Longitude	Slot
0.0	0.0	1443416.02	3196879.65	40.548418	-104.791539	
RKB - 23' WELL @ 4928.0ft (RKB - 23')						

WELLBORE TARGET DETAILS

Name	TVD	+N/-S	+E/-W	Shape
SHL 1719'FNL, 355'FWL, SEC.28	1.0	0.0	0.0	Point
BHL 2470'FNL, 470'FWL, SEC.30	7208.0	-967.5	-10775.5	Point
LPL 2470'FNL, 470'FEL, SEC.29	7268.0	-761.1	-852.7	Point



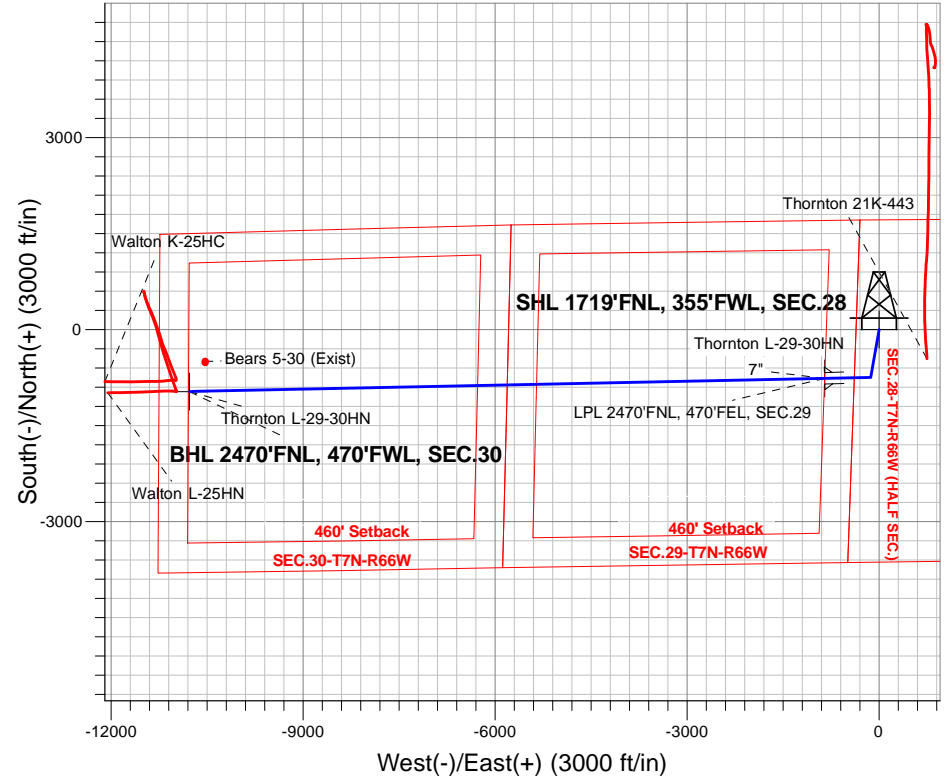
Azimuths to True North
Magnetic North: 8.26°

Magnetic Field
Strength: 52711.2nT
Dip Angle: 67.00°
Date: 2/22/2016
Model: IGRF2010

Thornton 28-H Pad Sec.28-T7N-R66W
Thornton L-29-30HN
Plan #3 (6-17-16)
11:13, June 21 2016

ANNOTATIONS

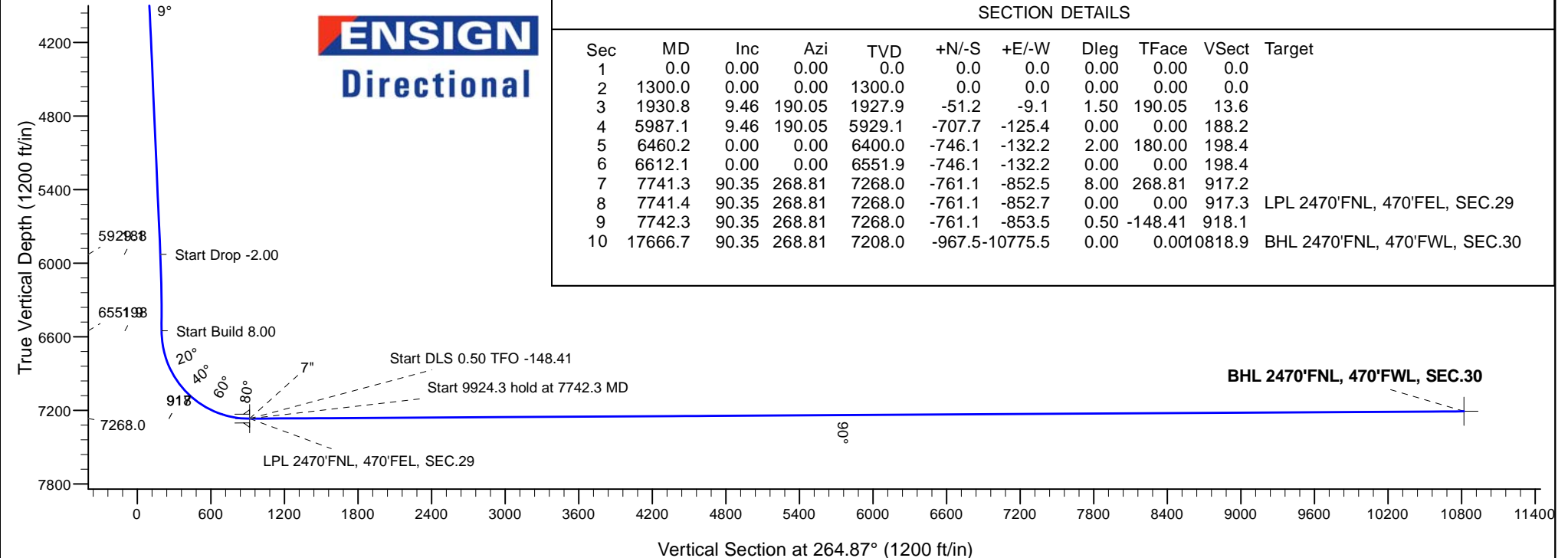
TVD	MD	Annotation
1300.0	1300.0	KOP - Start Build 1.50
5929.1	5987.1	Start Drop -2.00
6551.9	6612.1	Start Build 8.00
7268.0	7741.4	Start DLS 0.50 TFO -148.41
7268.0	7742.3	Start 9924.3 hold at 7742.3 MD
7208.0	17666.7	TD at 17666.7



ENSIGN
Directional

SECTION DETAILS

Sec	MD	Inc	Azi	TVD	+N/-S	+E/-W	Dleg	TFace	Vsect	Target
1	0.0	0.00	0.00	0.0	0.0	0.0	0.00	0.00	0.0	
2	1300.0	0.00	0.00	1300.0	0.0	0.0	0.00	0.00	0.0	
3	1930.8	9.46	190.05	1927.9	-51.2	-9.1	1.50	190.05	13.6	
4	5987.1	9.46	190.05	5929.1	-707.7	-125.4	0.00	0.00	188.2	
5	6460.2	0.00	0.00	6400.0	-746.1	-132.2	2.00	180.00	198.4	
6	6612.1	0.00	0.00	6551.9	-746.1	-132.2	0.00	0.00	198.4	
7	7741.3	90.35	268.81	7268.0	-761.1	-852.5	8.00	268.81	917.2	
8	7741.4	90.35	268.81	7268.0	-761.1	-852.7	0.00	0.00	917.3	LPL 2470'FNL, 470'FEL, SEC.29
9	7742.3	90.35	268.81	7268.0	-761.1	-853.5	0.50	-148.41	918.1	
10	17666.7	90.35	268.81	7208.0	-967.5	-10775.5	0.00	0.00	10818.9	BHL 2470'FNL, 470'FWL, SEC.30





Bayswater Exploration & Production, LLC

SEC.28-T7N-R66W

Thornton 28-H Pad Sec.28-T7N-R66W

Thornton L-29-30HN

Wellbore #1

Plan: Plan #3 (6-17-16)

Standard Planning Report

21 June, 2016



BAYSWATER
EXPLORATION & PRODUCTION, LLC

Database:	US_EDM	Local Co-ordinate Reference:	Well Thornton L-29-30HN
Company:	Bayswater Exploration & Production, LLC	TVD Reference:	WELL @ 4928.0ft (RKB - 23')
Project:	SEC.28-T7N-R66W	MD Reference:	WELL @ 4928.0ft (RKB - 23')
Site:	Thornton 28-H Pad Sec.28-T7N-R66W	North Reference:	True
Well:	Thornton L-29-30HN	Survey Calculation Method:	Minimum Curvature
Wellbore:	Wellbore #1		
Design:	Plan #3 (6-17-16)		

Project	SEC.28-T7N-R66W, Weld County, Colorado		
Map System:	US State Plane 1983	System Datum:	Mean Sea Level
Geo Datum:	North American Datum 1983		Using Well Reference Point
Map Zone:	Colorado Northern Zone		Using geodetic scale factor

Site	Thornton 28-H Pad Sec.28-T7N-R66W			
Site Position:		Northing:	1,443,581.10 usft	Latitude: 40.548871
From:	Lat/Long	Easting:	3,196,884.17 usft	Longitude: -104.791518
Position Uncertainty:	0.0 ft	Slot Radius:	13-3/16 "	Grid Convergence: 0.46 °

Well	Thornton L-29-30HN			
Well Position	+N/-S	-165.0 ft	Northing:	1,443,416.02 usft
	+E/-W	-5.8 ft	Easting:	3,196,879.65 usft
Position Uncertainty		0.0 ft	Wellhead Elevation:	0.0 ft
			Ground Level:	4,905.0 ft

Wellbore	Wellbore #1				
Magnetics	Model Name	Sample Date	Declination (°)	Dip Angle (°)	Field Strength (nT)
	IGRF2010	2/22/2016	8.26	67.00	52,711

Design	Plan #3 (6-17-16)			
Audit Notes:				
Version:	Phase:	PROTOTYPE	Tie On Depth:	0.0
Vertical Section:	Depth From (TVD)	+N/-S	+E/-W	Direction
	(ft)	(ft)	(ft)	(°)
	0.0	0.0	0.0	264.87

Plan Sections										
Measured Depth (ft)	Inclination (°)	Azimuth (°)	Vertical Depth (ft)	+N/-S (ft)	+E/-W (ft)	Dogleg Rate (°/100usft)	Build Rate (°/100usft)	Turn Rate (°/100usft)	TFO (°)	Target
0.0	0.00	0.00	0.0	0.0	0.0	0.00	0.00	0.00	0.00	
1,300.0	0.00	0.00	1,300.0	0.0	0.0	0.00	0.00	0.00	0.00	
1,930.8	9.46	190.05	1,927.9	-51.2	-9.1	1.50	1.50	0.00	190.05	
5,987.1	9.46	190.05	5,929.1	-707.7	-125.4	0.00	0.00	0.00	0.00	
6,460.2	0.00	0.00	6,400.0	-746.1	-132.2	2.00	-2.00	0.00	180.00	
6,612.1	0.00	0.00	6,551.9	-746.1	-132.2	0.00	0.00	0.00	0.00	
7,741.3	90.35	268.81	7,268.0	-761.1	-852.5	8.00	8.00	0.00	268.81	
7,741.4	90.35	268.81	7,268.0	-761.1	-852.7	0.00	0.00	0.00	0.00	LPL 2470'FNL, 470'F
7,742.3	90.35	268.81	7,268.0	-761.1	-853.5	0.50	-0.43	-0.26	-148.41	
17,666.7	90.35	268.81	7,208.0	-967.5	-10,775.5	0.00	0.00	0.00	0.00	BHL 2470'FNL, 470'F

Database:	US_EDM	Local Co-ordinate Reference:	Well Thornton L-29-30HN
Company:	Bayswater Exploration & Production, LLC	TVD Reference:	WELL @ 4928.0ft (RKB - 23')
Project:	SEC.28-T7N-R66W	MD Reference:	WELL @ 4928.0ft (RKB - 23')
Site:	Thornton 28-H Pad Sec.28-T7N-R66W	North Reference:	True
Well:	Thornton L-29-30HN	Survey Calculation Method:	Minimum Curvature
Wellbore:	Wellbore #1		
Design:	Plan #3 (6-17-16)		

Planned Survey									
Measured Depth (ft)	Inclination (°)	Azimuth (°)	Vertical Depth (ft)	+N/-S (ft)	+E/-W (ft)	Vertical Section (ft)	Dogleg Rate (°/100usft)	Build Rate (°/100usft)	Turn Rate (°/100usft)
0.0	0.00	0.00	0.0	0.0	0.0	0.0	0.00	0.00	0.00
1.0	0.00	0.00	1.0	0.0	0.0	0.0	0.00	0.00	0.00
SHL 1719'FNL, 355'FWL, SEC.28									
100.0	0.00	0.00	100.0	0.0	0.0	0.0	0.00	0.00	0.00
200.0	0.00	0.00	200.0	0.0	0.0	0.0	0.00	0.00	0.00
300.0	0.00	0.00	300.0	0.0	0.0	0.0	0.00	0.00	0.00
400.0	0.00	0.00	400.0	0.0	0.0	0.0	0.00	0.00	0.00
500.0	0.00	0.00	500.0	0.0	0.0	0.0	0.00	0.00	0.00
600.0	0.00	0.00	600.0	0.0	0.0	0.0	0.00	0.00	0.00
700.0	0.00	0.00	700.0	0.0	0.0	0.0	0.00	0.00	0.00
800.0	0.00	0.00	800.0	0.0	0.0	0.0	0.00	0.00	0.00
900.0	0.00	0.00	900.0	0.0	0.0	0.0	0.00	0.00	0.00
1,000.0	0.00	0.00	1,000.0	0.0	0.0	0.0	0.00	0.00	0.00
1,100.0	0.00	0.00	1,100.0	0.0	0.0	0.0	0.00	0.00	0.00
1,200.0	0.00	0.00	1,200.0	0.0	0.0	0.0	0.00	0.00	0.00
1,300.0	0.00	0.00	1,300.0	0.0	0.0	0.0	0.00	0.00	0.00
KOP - Start Build 1.50									
1,400.0	1.50	190.05	1,400.0	-1.3	-0.2	0.3	1.50	1.50	0.00
1,500.0	3.00	190.05	1,499.9	-5.2	-0.9	1.4	1.50	1.50	0.00
1,600.0	4.50	190.05	1,599.7	-11.6	-2.1	3.1	1.50	1.50	0.00
1,700.0	6.00	190.05	1,699.3	-20.6	-3.7	5.5	1.50	1.50	0.00
1,800.0	7.50	190.05	1,798.6	-32.2	-5.7	8.6	1.50	1.50	0.00
1,900.0	9.00	190.05	1,897.5	-46.3	-8.2	12.3	1.50	1.50	0.00
1,930.8	9.46	190.05	1,927.9	-51.2	-9.1	13.6	1.50	1.50	0.00
2,000.0	9.46	190.05	1,996.2	-62.4	-11.1	16.6	0.00	0.00	0.00
2,100.0	9.46	190.05	2,094.8	-78.6	-13.9	20.9	0.00	0.00	0.00
2,200.0	9.46	190.05	2,193.5	-94.7	-16.8	25.2	0.00	0.00	0.00
2,300.0	9.46	190.05	2,292.1	-110.9	-19.7	29.5	0.00	0.00	0.00
2,400.0	9.46	190.05	2,390.8	-127.1	-22.5	33.8	0.00	0.00	0.00
2,500.0	9.46	190.05	2,489.4	-143.3	-25.4	38.1	0.00	0.00	0.00
2,600.0	9.46	190.05	2,588.0	-159.5	-28.3	42.4	0.00	0.00	0.00
2,700.0	9.46	190.05	2,686.7	-175.7	-31.1	46.7	0.00	0.00	0.00
2,800.0	9.46	190.05	2,785.3	-191.9	-34.0	51.0	0.00	0.00	0.00
2,900.0	9.46	190.05	2,884.0	-208.0	-36.9	55.3	0.00	0.00	0.00
3,000.0	9.46	190.05	2,982.6	-224.2	-39.7	59.6	0.00	0.00	0.00
3,100.0	9.46	190.05	3,081.2	-240.4	-42.6	63.9	0.00	0.00	0.00
3,200.0	9.46	190.05	3,179.9	-256.6	-45.5	68.2	0.00	0.00	0.00
3,300.0	9.46	190.05	3,278.5	-272.8	-48.3	72.5	0.00	0.00	0.00
3,400.0	9.46	190.05	3,377.2	-289.0	-51.2	76.8	0.00	0.00	0.00
3,500.0	9.46	190.05	3,475.8	-305.2	-54.1	81.1	0.00	0.00	0.00
3,600.0	9.46	190.05	3,574.4	-321.3	-56.9	85.4	0.00	0.00	0.00
3,700.0	9.46	190.05	3,673.1	-337.5	-59.8	89.8	0.00	0.00	0.00
3,800.0	9.46	190.05	3,771.7	-353.7	-62.7	94.1	0.00	0.00	0.00
3,900.0	9.46	190.05	3,870.3	-369.9	-65.5	98.4	0.00	0.00	0.00
4,000.0	9.46	190.05	3,969.0	-386.1	-68.4	102.7	0.00	0.00	0.00
4,100.0	9.46	190.05	4,067.6	-402.3	-71.3	107.0	0.00	0.00	0.00
4,200.0	9.46	190.05	4,166.3	-418.5	-74.1	111.3	0.00	0.00	0.00
4,300.0	9.46	190.05	4,264.9	-434.6	-77.0	115.6	0.00	0.00	0.00
4,400.0	9.46	190.05	4,363.5	-450.8	-79.9	119.9	0.00	0.00	0.00
4,500.0	9.46	190.05	4,462.2	-467.0	-82.8	124.2	0.00	0.00	0.00
4,600.0	9.46	190.05	4,560.8	-483.2	-85.6	128.5	0.00	0.00	0.00
4,700.0	9.46	190.05	4,659.5	-499.4	-88.5	132.8	0.00	0.00	0.00
4,800.0	9.46	190.05	4,758.1	-515.6	-91.4	137.1	0.00	0.00	0.00
4,900.0	9.46	190.05	4,856.7	-531.8	-94.2	141.4	0.00	0.00	0.00

Database:	US_EDM	Local Co-ordinate Reference:	Well Thornton L-29-30HN
Company:	Bayswater Exploration & Production, LLC	TVD Reference:	WELL @ 4928.0ft (RKB - 23')
Project:	SEC.28-T7N-R66W	MD Reference:	WELL @ 4928.0ft (RKB - 23')
Site:	Thornton 28-H Pad Sec.28-T7N-R66W	North Reference:	True
Well:	Thornton L-29-30HN	Survey Calculation Method:	Minimum Curvature
Wellbore:	Wellbore #1		
Design:	Plan #3 (6-17-16)		

Planned Survey									
Measured Depth (ft)	Inclination (°)	Azimuth (°)	Vertical Depth (ft)	+N/-S (ft)	+E/-W (ft)	Vertical Section (ft)	Dogleg Rate (°/100usft)	Build Rate (°/100usft)	Turn Rate (°/100usft)
5,000.0	9.46	190.05	4,955.4	-548.0	-97.1	145.7	0.00	0.00	0.00
5,100.0	9.46	190.05	5,054.0	-564.1	-100.0	150.0	0.00	0.00	0.00
5,200.0	9.46	190.05	5,152.7	-580.3	-102.8	154.3	0.00	0.00	0.00
5,300.0	9.46	190.05	5,251.3	-596.5	-105.7	158.6	0.00	0.00	0.00
5,400.0	9.46	190.05	5,349.9	-612.7	-108.6	162.9	0.00	0.00	0.00
5,500.0	9.46	190.05	5,448.6	-628.9	-111.4	167.2	0.00	0.00	0.00
5,600.0	9.46	190.05	5,547.2	-645.1	-114.3	171.5	0.00	0.00	0.00
5,700.0	9.46	190.05	5,645.9	-661.3	-117.2	175.8	0.00	0.00	0.00
5,800.0	9.46	190.05	5,744.5	-677.4	-120.0	180.1	0.00	0.00	0.00
5,900.0	9.46	190.05	5,843.1	-693.6	-122.9	184.4	0.00	0.00	0.00
5,987.1	9.46	190.05	5,929.1	-707.7	-125.4	188.2	0.00	0.00	0.00
Start Drop -2.00									
6,000.0	9.20	190.05	5,941.8	-709.8	-125.8	188.7	2.00	-2.00	0.00
6,100.0	7.20	190.05	6,040.8	-723.8	-128.3	192.5	2.00	-2.00	0.00
6,200.0	5.20	190.05	6,140.2	-734.5	-130.1	195.3	2.00	-2.00	0.00
6,300.0	3.20	190.05	6,239.9	-741.7	-131.4	197.2	2.00	-2.00	0.00
6,400.0	1.20	190.05	6,339.8	-745.5	-132.1	198.2	2.00	-2.00	0.00
6,460.2	0.00	0.00	6,400.0	-746.1	-132.2	198.4	2.00	-2.00	0.00
6,500.0	0.00	0.00	6,439.8	-746.1	-132.2	198.4	0.00	0.00	0.00
6,600.0	0.00	0.00	6,539.8	-746.1	-132.2	198.4	0.00	0.00	0.00
6,612.1	0.00	0.00	6,551.9	-746.1	-132.2	198.4	0.00	0.00	0.00
Start Build 8.00									
6,700.0	7.03	268.81	6,639.6	-746.2	-137.6	203.8	8.00	8.00	0.00
6,800.0	15.03	268.81	6,737.7	-746.6	-156.7	222.8	8.00	8.00	0.00
6,900.0	23.04	268.81	6,832.1	-747.3	-189.3	255.4	8.00	8.00	0.00
7,000.0	31.04	268.81	6,921.1	-748.2	-234.7	300.7	8.00	8.00	0.00
7,100.0	39.04	268.81	7,002.9	-749.4	-292.1	357.9	8.00	8.00	0.00
7,200.0	47.04	268.81	7,076.0	-750.8	-360.2	425.9	8.00	8.00	0.00
7,300.0	55.04	268.81	7,138.8	-752.4	-437.9	503.4	8.00	8.00	0.00
7,400.0	63.04	268.81	7,190.2	-754.2	-523.6	588.9	8.00	8.00	0.00
7,500.0	71.04	268.81	7,229.2	-756.1	-615.6	680.7	8.00	8.00	0.00
7,600.0	79.04	268.81	7,255.0	-758.1	-712.1	777.0	8.00	8.00	0.00
7,700.0	87.04	268.81	7,267.1	-760.2	-811.2	876.0	8.00	8.00	0.00
7,741.3	90.35	268.81	7,268.0	-761.1	-852.5	917.2	8.00	8.00	0.00
7,741.4	90.35	268.81	7,268.0	-761.1	-852.7	917.3	0.00	0.00	0.00
Start DLS 0.50 TFO -148.41 - 7" - LPL 2470'FNL, 470'FEL, SEC.29									
7,742.3	90.35	268.81	7,268.0	-761.1	-853.5	918.1	0.50	-0.43	-0.26
Start 9924.3 hold at 7742.3 MD									
7,800.0	90.35	268.81	7,267.6	-762.3	-911.2	975.7	0.00	0.00	0.00
7,900.0	90.35	268.81	7,267.0	-764.4	-1,011.2	1,075.5	0.00	0.00	0.00
8,000.0	90.35	268.81	7,266.4	-766.4	-1,111.1	1,175.2	0.00	0.00	0.00
8,100.0	90.35	268.81	7,265.8	-768.5	-1,211.1	1,275.0	0.00	0.00	0.00
8,200.0	90.35	268.81	7,265.2	-770.6	-1,311.1	1,374.8	0.00	0.00	0.00
8,300.0	90.35	268.81	7,264.6	-772.7	-1,411.1	1,474.5	0.00	0.00	0.00
8,400.0	90.35	268.81	7,264.0	-774.8	-1,511.0	1,574.3	0.00	0.00	0.00
8,500.0	90.35	268.81	7,263.4	-776.8	-1,611.0	1,674.0	0.00	0.00	0.00
8,600.0	90.35	268.81	7,262.8	-778.9	-1,711.0	1,773.8	0.00	0.00	0.00
8,700.0	90.35	268.81	7,262.2	-781.0	-1,811.0	1,873.6	0.00	0.00	0.00
8,800.0	90.35	268.81	7,261.6	-783.1	-1,911.0	1,973.3	0.00	0.00	0.00
8,900.0	90.35	268.81	7,261.0	-785.1	-2,010.9	2,073.1	0.00	0.00	0.00
9,000.0	90.35	268.81	7,260.4	-787.2	-2,110.9	2,172.8	0.00	0.00	0.00
9,100.0	90.35	268.81	7,259.8	-789.3	-2,210.9	2,272.6	0.00	0.00	0.00
9,200.0	90.35	268.81	7,259.2	-791.4	-2,310.9	2,372.4	0.00	0.00	0.00

Database:	US_EDM	Local Co-ordinate Reference:	Well Thornton L-29-30HN
Company:	Bayswater Exploration & Production, LLC	TVD Reference:	WELL @ 4928.0ft (RKB - 23')
Project:	SEC.28-T7N-R66W	MD Reference:	WELL @ 4928.0ft (RKB - 23')
Site:	Thornton 28-H Pad Sec.28-T7N-R66W	North Reference:	True
Well:	Thornton L-29-30HN	Survey Calculation Method:	Minimum Curvature
Wellbore:	Wellbore #1		
Design:	Plan #3 (6-17-16)		

Planned Survey									
Measured Depth (ft)	Inclination (°)	Azimuth (°)	Vertical Depth (ft)	+N/-S (ft)	+E/-W (ft)	Vertical Section (ft)	Dogleg Rate (°/100usft)	Build Rate (°/100usft)	Turn Rate (°/100usft)
9,300.0	90.35	268.81	7,258.6	-793.5	-2,410.8	2,472.1	0.00	0.00	0.00
9,400.0	90.35	268.81	7,258.0	-795.5	-2,510.8	2,571.9	0.00	0.00	0.00
9,500.0	90.35	268.81	7,257.4	-797.6	-2,610.8	2,671.7	0.00	0.00	0.00
9,600.0	90.35	268.81	7,256.8	-799.7	-2,710.8	2,771.4	0.00	0.00	0.00
9,700.0	90.35	268.81	7,256.2	-801.8	-2,810.7	2,871.2	0.00	0.00	0.00
9,800.0	90.35	268.81	7,255.6	-803.9	-2,910.7	2,970.9	0.00	0.00	0.00
9,900.0	90.35	268.81	7,255.0	-805.9	-3,010.7	3,070.7	0.00	0.00	0.00
10,000.0	90.35	268.81	7,254.3	-808.0	-3,110.7	3,170.5	0.00	0.00	0.00
10,100.0	90.35	268.81	7,253.7	-810.1	-3,210.6	3,270.2	0.00	0.00	0.00
10,200.0	90.35	268.81	7,253.1	-812.2	-3,310.6	3,370.0	0.00	0.00	0.00
10,300.0	90.35	268.81	7,252.5	-814.3	-3,410.6	3,469.8	0.00	0.00	0.00
10,400.0	90.35	268.81	7,251.9	-816.3	-3,510.6	3,569.5	0.00	0.00	0.00
10,500.0	90.35	268.81	7,251.3	-818.4	-3,610.6	3,669.3	0.00	0.00	0.00
10,600.0	90.35	268.81	7,250.7	-820.5	-3,710.5	3,769.0	0.00	0.00	0.00
10,700.0	90.35	268.81	7,250.1	-822.6	-3,810.5	3,868.8	0.00	0.00	0.00
10,800.0	90.35	268.81	7,249.5	-824.7	-3,910.5	3,968.6	0.00	0.00	0.00
10,900.0	90.35	268.81	7,248.9	-826.7	-4,010.5	4,068.3	0.00	0.00	0.00
11,000.0	90.35	268.81	7,248.3	-828.8	-4,110.4	4,168.1	0.00	0.00	0.00
11,100.0	90.35	268.81	7,247.7	-830.9	-4,210.4	4,267.8	0.00	0.00	0.00
11,200.0	90.35	268.81	7,247.1	-833.0	-4,310.4	4,367.6	0.00	0.00	0.00
11,300.0	90.35	268.81	7,246.5	-835.1	-4,410.4	4,467.4	0.00	0.00	0.00
11,400.0	90.35	268.81	7,245.9	-837.1	-4,510.3	4,567.1	0.00	0.00	0.00
11,500.0	90.35	268.81	7,245.3	-839.2	-4,610.3	4,666.9	0.00	0.00	0.00
11,600.0	90.35	268.81	7,244.7	-841.3	-4,710.3	4,766.7	0.00	0.00	0.00
11,700.0	90.35	268.81	7,244.1	-843.4	-4,810.3	4,866.4	0.00	0.00	0.00
11,800.0	90.35	268.81	7,243.5	-845.5	-4,910.3	4,966.2	0.00	0.00	0.00
11,900.0	90.35	268.81	7,242.9	-847.5	-5,010.2	5,065.9	0.00	0.00	0.00
12,000.0	90.35	268.81	7,242.3	-849.6	-5,110.2	5,165.7	0.00	0.00	0.00
12,100.0	90.35	268.81	7,241.7	-851.7	-5,210.2	5,265.5	0.00	0.00	0.00
12,200.0	90.35	268.81	7,241.0	-853.8	-5,310.2	5,365.2	0.00	0.00	0.00
12,300.0	90.35	268.81	7,240.4	-855.9	-5,410.1	5,465.0	0.00	0.00	0.00
12,400.0	90.35	268.81	7,239.8	-857.9	-5,510.1	5,564.8	0.00	0.00	0.00
12,500.0	90.35	268.81	7,239.2	-860.0	-5,610.1	5,664.5	0.00	0.00	0.00
12,600.0	90.35	268.81	7,238.6	-862.1	-5,710.1	5,764.3	0.00	0.00	0.00
12,700.0	90.35	268.81	7,238.0	-864.2	-5,810.0	5,864.0	0.00	0.00	0.00
12,800.0	90.35	268.81	7,237.4	-866.3	-5,910.0	5,963.8	0.00	0.00	0.00
12,900.0	90.35	268.81	7,236.8	-868.3	-6,010.0	6,063.6	0.00	0.00	0.00
13,000.0	90.35	268.81	7,236.2	-870.4	-6,110.0	6,163.3	0.00	0.00	0.00
13,100.0	90.35	268.81	7,235.6	-872.5	-6,209.9	6,263.1	0.00	0.00	0.00
13,200.0	90.35	268.81	7,235.0	-874.6	-6,309.9	6,362.8	0.00	0.00	0.00
13,300.0	90.35	268.81	7,234.4	-876.6	-6,409.9	6,462.6	0.00	0.00	0.00
13,400.0	90.35	268.81	7,233.8	-878.7	-6,509.9	6,562.4	0.00	0.00	0.00
13,500.0	90.35	268.81	7,233.2	-880.8	-6,609.9	6,662.1	0.00	0.00	0.00
13,600.0	90.35	268.81	7,232.6	-882.9	-6,709.8	6,761.9	0.00	0.00	0.00
13,700.0	90.35	268.81	7,232.0	-885.0	-6,809.8	6,861.7	0.00	0.00	0.00
13,800.0	90.35	268.81	7,231.4	-887.0	-6,909.8	6,961.4	0.00	0.00	0.00
13,900.0	90.35	268.81	7,230.8	-889.1	-7,009.8	7,061.2	0.00	0.00	0.00
14,000.0	90.35	268.81	7,230.2	-891.2	-7,109.7	7,160.9	0.00	0.00	0.00
14,100.0	90.35	268.81	7,229.6	-893.3	-7,209.7	7,260.7	0.00	0.00	0.00
14,200.0	90.35	268.81	7,229.0	-895.4	-7,309.7	7,360.5	0.00	0.00	0.00
14,300.0	90.35	268.81	7,228.4	-897.4	-7,409.7	7,460.2	0.00	0.00	0.00
14,400.0	90.35	268.81	7,227.7	-899.5	-7,509.6	7,560.0	0.00	0.00	0.00
14,500.0	90.35	268.81	7,227.1	-901.6	-7,609.6	7,659.8	0.00	0.00	0.00
14,600.0	90.35	268.81	7,226.5	-903.7	-7,709.6	7,759.5	0.00	0.00	0.00

Database:	US_EDM	Local Co-ordinate Reference:	Well Thornton L-29-30HN
Company:	Bayswater Exploration & Production, LLC	TVD Reference:	WELL @ 4928.0ft (RKB - 23')
Project:	SEC.28-T7N-R66W	MD Reference:	WELL @ 4928.0ft (RKB - 23')
Site:	Thornton 28-H Pad Sec.28-T7N-R66W	North Reference:	True
Well:	Thornton L-29-30HN	Survey Calculation Method:	Minimum Curvature
Wellbore:	Wellbore #1		
Design:	Plan #3 (6-17-16)		

Planned Survey										
Measured Depth (ft)	Inclination (°)	Azimuth (°)	Vertical Depth (ft)	+N/-S (ft)	+E/-W (ft)	Vertical Section (ft)	Dogleg Rate (°/100usft)	Build Rate (°/100usft)	Turn Rate (°/100usft)	
14,700.0	90.35	268.81	7,225.9	-905.8	-7,809.6	7,859.3	0.00	0.00	0.00	
14,800.0	90.35	268.81	7,225.3	-907.8	-7,909.5	7,959.0	0.00	0.00	0.00	
14,900.0	90.35	268.81	7,224.7	-909.9	-8,009.5	8,058.8	0.00	0.00	0.00	
15,000.0	90.35	268.81	7,224.1	-912.0	-8,109.5	8,158.6	0.00	0.00	0.00	
15,100.0	90.35	268.81	7,223.5	-914.1	-8,209.5	8,258.3	0.00	0.00	0.00	
15,200.0	90.35	268.81	7,222.9	-916.2	-8,309.5	8,358.1	0.00	0.00	0.00	
15,300.0	90.35	268.81	7,222.3	-918.2	-8,409.4	8,457.9	0.00	0.00	0.00	
15,400.0	90.35	268.81	7,221.7	-920.3	-8,509.4	8,557.6	0.00	0.00	0.00	
15,500.0	90.35	268.81	7,221.1	-922.4	-8,609.4	8,657.4	0.00	0.00	0.00	
15,600.0	90.35	268.81	7,220.5	-924.5	-8,709.4	8,757.1	0.00	0.00	0.00	
15,700.0	90.35	268.81	7,219.9	-926.6	-8,809.3	8,856.9	0.00	0.00	0.00	
15,800.0	90.35	268.81	7,219.3	-928.6	-8,909.3	8,956.7	0.00	0.00	0.00	
15,900.0	90.35	268.81	7,218.7	-930.7	-9,009.3	9,056.4	0.00	0.00	0.00	
16,000.0	90.35	268.81	7,218.1	-932.8	-9,109.3	9,156.2	0.00	0.00	0.00	
16,100.0	90.35	268.81	7,217.5	-934.9	-9,209.2	9,255.9	0.00	0.00	0.00	
16,200.0	90.35	268.81	7,216.9	-937.0	-9,309.2	9,355.7	0.00	0.00	0.00	
16,300.0	90.35	268.81	7,216.3	-939.0	-9,409.2	9,455.5	0.00	0.00	0.00	
16,400.0	90.35	268.81	7,215.7	-941.1	-9,509.2	9,555.2	0.00	0.00	0.00	
16,500.0	90.35	268.81	7,215.1	-943.2	-9,609.1	9,655.0	0.00	0.00	0.00	
16,600.0	90.35	268.81	7,214.4	-945.3	-9,709.1	9,754.8	0.00	0.00	0.00	
16,700.0	90.35	268.81	7,213.8	-947.4	-9,809.1	9,854.5	0.00	0.00	0.00	
16,800.0	90.35	268.81	7,213.2	-949.4	-9,909.1	9,954.3	0.00	0.00	0.00	
16,900.0	90.35	268.81	7,212.6	-951.5	-10,009.1	10,054.0	0.00	0.00	0.00	
17,000.0	90.35	268.81	7,212.0	-953.6	-10,109.0	10,153.8	0.00	0.00	0.00	
17,100.0	90.35	268.81	7,211.4	-955.7	-10,209.0	10,253.6	0.00	0.00	0.00	
17,200.0	90.35	268.81	7,210.8	-957.8	-10,309.0	10,353.3	0.00	0.00	0.00	
17,300.0	90.35	268.81	7,210.2	-959.8	-10,409.0	10,453.1	0.00	0.00	0.00	
17,400.0	90.35	268.81	7,209.6	-961.9	-10,508.9	10,552.9	0.00	0.00	0.00	
17,500.0	90.35	268.81	7,209.0	-964.0	-10,608.9	10,652.6	0.00	0.00	0.00	
17,600.0	90.35	268.81	7,208.4	-966.1	-10,708.9	10,752.4	0.00	0.00	0.00	
17,666.7	90.35	268.81	7,208.0	-967.5	-10,775.5	10,818.9	0.00	0.00	0.00	
TD at 17666.7 - BHL 2470'FNL, 470'FWL, SEC.30										

Design Targets										
Target Name	Dip Angle (°)	Dip Dir. (°)	TVD (ft)	+N/-S (ft)	+E/-W (ft)	Northing (usft)	Easting (usft)	Latitude		
- hit/miss target										
- Shape								Longitude		
SHL 1719'FNL, 355'FWL - plan hits target center - Point	0.00	0.00	1.0	0.0	0.0	1,443,416.03	3,196,879.65	40.548418 -104.791539		
BHL 2470'FNL, 470'FWL - plan hits target center - Point	0.00	0.00	7,208.0	-967.5	-10,775.5	1,442,362.54	3,186,112.54	40.545756 -104.830311		
LPL 2470'FNL, 470'FEL, - plan hits target center - Point	0.00	0.00	7,268.0	-761.1	-852.7	1,442,648.20	3,196,033.13	40.546329 -104.794607		

Database:	US_EDM	Local Co-ordinate Reference:	Well Thornton L-29-30HN
Company:	Bayswater Exploration & Production, LLC	TVD Reference:	WELL @ 4928.0ft (RKB - 23')
Project:	SEC.28-T7N-R66W	MD Reference:	WELL @ 4928.0ft (RKB - 23')
Site:	Thornton 28-H Pad Sec.28-T7N-R66W	North Reference:	True
Well:	Thornton L-29-30HN	Survey Calculation Method:	Minimum Curvature
Wellbore:	Wellbore #1		
Design:	Plan #3 (6-17-16)		

Casing Points					
Measured Depth (ft)	Vertical Depth (ft)	Name	Casing Diameter (")	Hole Diameter (")	
7,741.4	7,268.0	7"	7	8-3/4	

Plan Annotations					
Measured Depth (ft)	Vertical Depth (ft)	Local Coordinates			
		+N/-S (ft)	+E/-W (ft)	Comment	
1,300.0	1,300.0	0.0	0.0	KOP - Start Build 1.50	
5,987.1	5,929.1	-707.7	-125.4	Start Drop -2.00	
6,612.1	6,551.9	-746.1	-132.2	Start Build 8.00	
7,741.4	7,268.0	-761.1	-852.6	Start DLS 0.50 TFO -148.41	
7,742.3	7,268.0	-761.1	-853.5	Start 9924.3 hold at 7742.3 MD	
17,666.7	7,208.0	-967.5	-10,775.5	TD at 17666.7	