

Bayswater Exploration & Production, LLC

Well Name: **Ward T-20-19HC**

Surface Location: Ward 20-M Pad Sec. 20-T6N-R66W

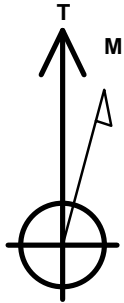
North American Datum 1983 , US State Plane 1983, Colorado Northern Zone

Ground Elevation: 4728.0

+N/-S +E/-W Northing Easting Latitude Longitude Slot
 0.0 0.0 1413852.11 3196665.93 40.467274 -104.793156
 RKB - 23' WELL @ 4751.0ft (RKB - 23')

DESIGN TARGET DETAILS

Name	TVD	+N/-S	+E/-W	Shape
SHL 319'FSL, 213'FEL, SEC.20	1.0	0.0	0.0	Point
BHL 967'FSL, 470'FWL, SEC.19	7080.0	325.4	-10478.8	Point
Boreline Vertex 976'FSL	7102.0	475.9	-7797.7	Point
Boreline Vertex 981'FSL	7114.0	553.6	-5108.7	Point
LPL 985'FSL, 470'FEL, SEC.20	7130.0	662.7	-257.6	Point



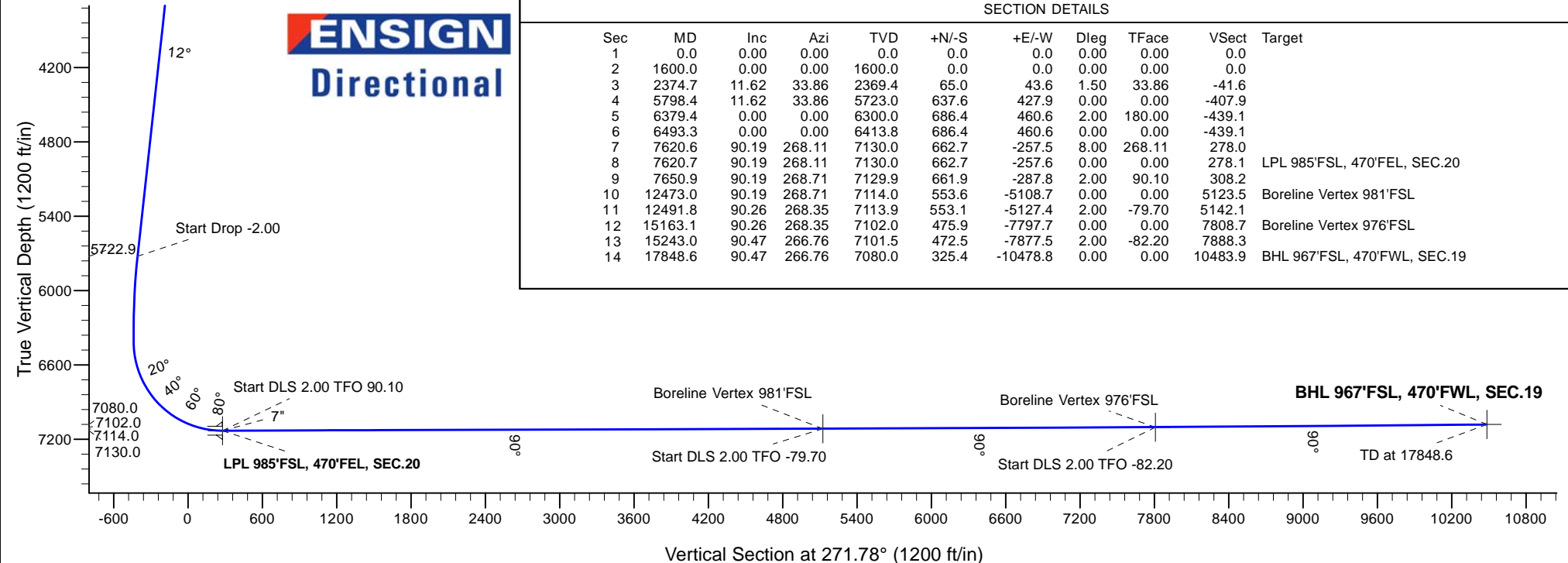
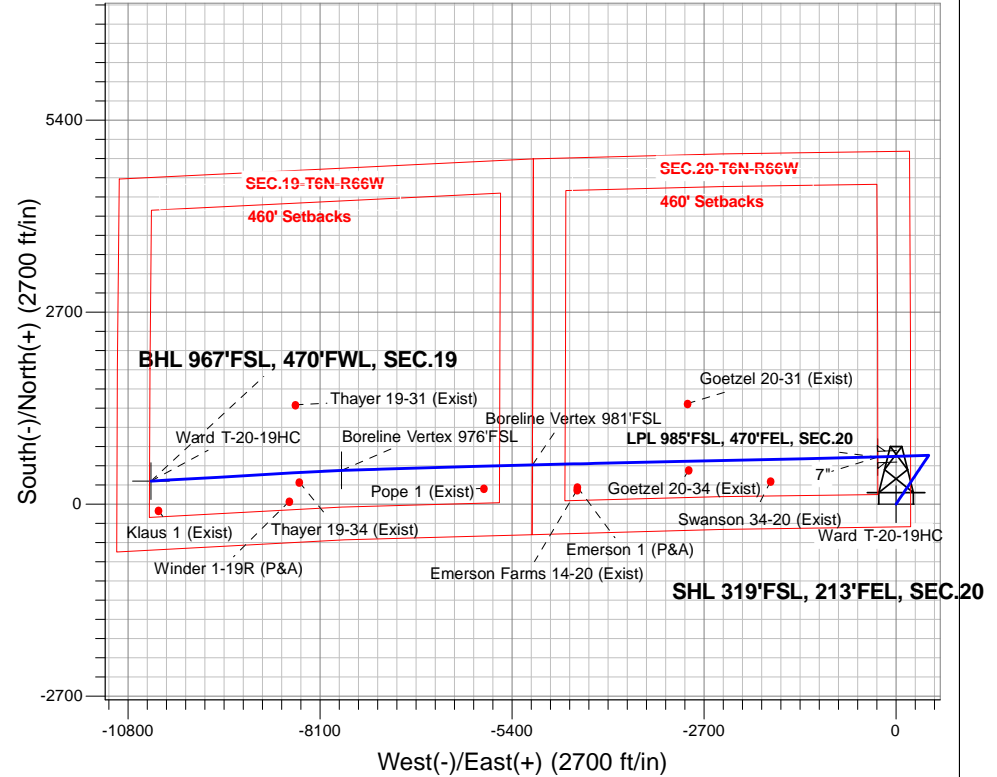
Azimuths to True North
 Magnetic North: 8.21°

Magnetic Field
 Strength: 52637.2snT
 Dip Angle: 66.93°
 Date: 6/16/2016
 Model: IGRF2010

Ward 20-M Pad Sec. 20-T6N-R66W
 Ward T-20-19HC
 Plan #2 (6-14-16)
 10:22, June 16 2016

ANNOTATIONS

TVD	MD	Annotation
1600.0	1600.0	KOP - Start Build 1.50
5723.0	5798.4	Start Drop -2.00
7130.0	7620.7	Start DLS 2.00 TFO 90.10
7114.0	12473.0	Start DLS 2.00 TFO -79.70
7102.0	15163.1	Start DLS 2.00 TFO -82.20
7080.0	17848.6	TD at 17848.6





Bayswater Exploration & Production, LLC

SEC.20-T6N-R66W

Ward 20-M Pad Sec. 20-T6N-R66W

Ward T-20-19HC

Wellbore #1

Plan: Plan #2 (6-14-16)

Standard Planning Report

16 June, 2016



BAYSWATER
EXPLORATION & PRODUCTION, LLC

Database:	US_EDM	Local Co-ordinate Reference:	Well Ward T-20-19HC
Company:	Bayswater Exploration & Production, LLC	TVD Reference:	WELL @ 4751.0ft (RKB - 23')
Project:	SEC.20-T6N-R66W	MD Reference:	WELL @ 4751.0ft (RKB - 23')
Site:	Ward 20-M Pad Sec. 20-T6N-R66W	North Reference:	True
Well:	Ward T-20-19HC	Survey Calculation Method:	Minimum Curvature
Wellbore:	Wellbore #1		
Design:	Plan #2 (6-14-16)		

Project	SEC.20-T6N-R66W, Weld County, Colorado		
Map System:	US State Plane 1983	System Datum:	Mean Sea Level
Geo Datum:	North American Datum 1983		Using Well Reference Point
Map Zone:	Colorado Northern Zone		Using geodetic scale factor

Site	Ward 20-M Pad Sec. 20-T6N-R66W			
Site Position:		Northing:	1,413,957.04 usft	Latitude: 40.467562
From:	Lat/Long	Easting:	3,196,665.10 usft	Longitude: -104.793156
Position Uncertainty:	0.0 ft	Slot Radius:	13-3/16 "	Grid Convergence: 0.46 °

Well	Ward T-20-19HC			
Well Position	+N/-S	-104.9 ft	Northing:	1,413,852.11 usft
	+E/-W	0.0 ft	Easting:	3,196,665.94 usft
Position Uncertainty	0.0 ft	Wellhead Elevation:	0.0 ft	Ground Level: 4,728.0 ft

Wellbore	Wellbore #1				
Magnetics	Model Name	Sample Date	Declination (°)	Dip Angle (°)	Field Strength (nT)
	IGRF2010	6/16/2016	8.21	66.93	52,637

Design	Plan #2 (6-14-16)			
Audit Notes:				
Version:	Phase:	PROTOTYPE	Tie On Depth:	0.0
Vertical Section:	Depth From (TVD) (ft)	+N/-S (ft)	+E/-W (ft)	Direction (°)
	0.0	0.0	0.0	271.78

Plan Sections										
Measured Depth (ft)	Inclination (°)	Azimuth (°)	Vertical Depth (ft)	+N/-S (ft)	+E/-W (ft)	Dogleg Rate (°/100usft)	Build Rate (°/100usft)	Turn Rate (°/100usft)	TFO (°)	Target
0.0	0.00	0.00	0.0	0.0	0.0	0.00	0.00	0.00	0.00	
1,600.0	0.00	0.00	1,600.0	0.0	0.0	0.00	0.00	0.00	0.00	
2,374.7	11.62	33.86	2,369.4	65.0	43.6	1.50	1.50	0.00	33.86	
5,798.4	11.62	33.86	5,723.0	637.6	427.9	0.00	0.00	0.00	0.00	
6,379.4	0.00	0.00	6,300.0	686.4	460.6	2.00	-2.00	0.00	180.00	
6,493.3	0.00	0.00	6,413.8	686.4	460.6	0.00	0.00	0.00	0.00	
7,620.6	90.19	268.11	7,130.0	662.7	-257.5	8.00	8.00	0.00	268.11	
7,620.7	90.19	268.11	7,130.0	662.7	-257.6	0.00	0.00	0.00	0.00	LPL 985'FSL, 470'FEI
7,650.9	90.19	268.71	7,129.9	661.9	-287.8	2.00	0.00	2.00	90.10	
12,473.0	90.19	268.71	7,114.0	553.6	-5,108.7	0.00	0.00	0.00	0.00	Boreline Vertex 981'F
12,491.8	90.26	268.35	7,113.9	553.1	-5,127.4	2.00	0.36	-1.97	-79.70	
15,163.1	90.26	268.35	7,102.0	475.9	-7,797.7	0.00	0.00	0.00	0.00	Boreline Vertex 976'F
15,243.0	90.47	266.76	7,101.5	472.5	-7,877.5	2.00	0.27	-1.98	-82.20	
17,848.6	90.47	266.76	7,080.0	325.4	-10,478.8	0.00	0.00	0.00	0.00	BHL 967'FSL, 470'FW

Database:	US_EDM	Local Co-ordinate Reference:	Well Ward T-20-19HC
Company:	Bayswater Exploration & Production, LLC	TVD Reference:	WELL @ 4751.0ft (RKB - 23')
Project:	SEC.20-T6N-R66W	MD Reference:	WELL @ 4751.0ft (RKB - 23')
Site:	Ward 20-M Pad Sec. 20-T6N-R66W	North Reference:	True
Well:	Ward T-20-19HC	Survey Calculation Method:	Minimum Curvature
Wellbore:	Wellbore #1		
Design:	Plan #2 (6-14-16)		

Planned Survey									
Measured Depth (ft)	Inclination (°)	Azimuth (°)	Vertical Depth (ft)	+N/-S (ft)	+E/-W (ft)	Vertical Section (ft)	Dogleg Rate (°/100usft)	Build Rate (°/100usft)	Turn Rate (°/100usft)
0.0	0.00	0.00	0.0	0.0	0.0	0.0	0.00	0.00	0.00
100.0	0.00	0.00	100.0	0.0	0.0	0.0	0.00	0.00	0.00
200.0	0.00	0.00	200.0	0.0	0.0	0.0	0.00	0.00	0.00
300.0	0.00	0.00	300.0	0.0	0.0	0.0	0.00	0.00	0.00
400.0	0.00	0.00	400.0	0.0	0.0	0.0	0.00	0.00	0.00
500.0	0.00	0.00	500.0	0.0	0.0	0.0	0.00	0.00	0.00
600.0	0.00	0.00	600.0	0.0	0.0	0.0	0.00	0.00	0.00
700.0	0.00	0.00	700.0	0.0	0.0	0.0	0.00	0.00	0.00
800.0	0.00	0.00	800.0	0.0	0.0	0.0	0.00	0.00	0.00
900.0	0.00	0.00	900.0	0.0	0.0	0.0	0.00	0.00	0.00
1,000.0	0.00	0.00	1,000.0	0.0	0.0	0.0	0.00	0.00	0.00
1,100.0	0.00	0.00	1,100.0	0.0	0.0	0.0	0.00	0.00	0.00
1,200.0	0.00	0.00	1,200.0	0.0	0.0	0.0	0.00	0.00	0.00
1,300.0	0.00	0.00	1,300.0	0.0	0.0	0.0	0.00	0.00	0.00
1,400.0	0.00	0.00	1,400.0	0.0	0.0	0.0	0.00	0.00	0.00
1,500.0	0.00	0.00	1,500.0	0.0	0.0	0.0	0.00	0.00	0.00
1,600.0	0.00	0.00	1,600.0	0.0	0.0	0.0	0.00	0.00	0.00
KOP - Start Build 1.50									
1,700.0	1.50	33.86	1,700.0	1.1	0.7	-0.7	1.50	1.50	0.00
1,800.0	3.00	33.86	1,799.9	4.3	2.9	-2.8	1.50	1.50	0.00
1,900.0	4.50	33.86	1,899.7	9.8	6.6	-6.3	1.50	1.50	0.00
2,000.0	6.00	33.86	1,999.3	17.4	11.7	-11.1	1.50	1.50	0.00
2,100.0	7.50	33.86	2,098.6	27.1	18.2	-17.4	1.50	1.50	0.00
2,200.0	9.00	33.86	2,197.5	39.0	26.2	-25.0	1.50	1.50	0.00
2,300.0	10.50	33.86	2,296.1	53.1	35.6	-34.0	1.50	1.50	0.00
2,374.7	11.62	33.86	2,369.4	65.0	43.6	-41.6	1.50	1.50	0.00
2,400.0	11.62	33.86	2,394.2	69.2	46.5	-44.3	0.00	0.00	0.00
2,500.0	11.62	33.86	2,492.1	86.0	57.7	-55.0	0.00	0.00	0.00
2,600.0	11.62	33.86	2,590.1	102.7	68.9	-65.7	0.00	0.00	0.00
2,700.0	11.62	33.86	2,688.0	119.4	80.1	-76.4	0.00	0.00	0.00
2,800.0	11.62	33.86	2,786.0	136.1	91.4	-87.1	0.00	0.00	0.00
2,900.0	11.62	33.86	2,883.9	152.9	102.6	-97.8	0.00	0.00	0.00
3,000.0	11.62	33.86	2,981.9	169.6	113.8	-108.5	0.00	0.00	0.00
3,100.0	11.62	33.86	3,079.8	186.3	125.0	-119.2	0.00	0.00	0.00
3,200.0	11.62	33.86	3,177.8	203.0	136.3	-129.9	0.00	0.00	0.00
3,300.0	11.62	33.86	3,275.7	219.8	147.5	-140.6	0.00	0.00	0.00
3,400.0	11.62	33.86	3,373.7	236.5	158.7	-151.3	0.00	0.00	0.00
3,500.0	11.62	33.86	3,471.6	253.2	169.9	-162.0	0.00	0.00	0.00
3,600.0	11.62	33.86	3,569.6	269.9	181.1	-172.7	0.00	0.00	0.00
3,700.0	11.62	33.86	3,667.5	286.7	192.4	-183.4	0.00	0.00	0.00
3,800.0	11.62	33.86	3,765.5	303.4	203.6	-194.1	0.00	0.00	0.00
3,900.0	11.62	33.86	3,863.4	320.1	214.8	-204.8	0.00	0.00	0.00
4,000.0	11.62	33.86	3,961.4	336.8	226.0	-215.5	0.00	0.00	0.00
4,100.0	11.62	33.86	4,059.3	353.6	237.3	-226.2	0.00	0.00	0.00
4,200.0	11.62	33.86	4,157.3	370.3	248.5	-236.9	0.00	0.00	0.00
4,300.0	11.62	33.86	4,255.2	387.0	259.7	-247.6	0.00	0.00	0.00
4,400.0	11.62	33.86	4,353.2	403.8	270.9	-258.3	0.00	0.00	0.00
4,500.0	11.62	33.86	4,451.1	420.5	282.2	-269.0	0.00	0.00	0.00
4,600.0	11.62	33.86	4,549.1	437.2	293.4	-279.7	0.00	0.00	0.00
4,700.0	11.62	33.86	4,647.0	453.9	304.6	-290.4	0.00	0.00	0.00
4,800.0	11.62	33.86	4,745.0	470.7	315.8	-301.1	0.00	0.00	0.00
4,900.0	11.62	33.86	4,842.9	487.4	327.0	-311.8	0.00	0.00	0.00
5,000.0	11.62	33.86	4,940.9	504.1	338.3	-322.5	0.00	0.00	0.00
5,100.0	11.62	33.86	5,038.8	520.8	349.5	-333.2	0.00	0.00	0.00

Database:	US_EDM	Local Co-ordinate Reference:	Well Ward T-20-19HC
Company:	Bayswater Exploration & Production, LLC	TVD Reference:	WELL @ 4751.0ft (RKB - 23')
Project:	SEC.20-T6N-R66W	MD Reference:	WELL @ 4751.0ft (RKB - 23')
Site:	Ward 20-M Pad Sec. 20-T6N-R66W	North Reference:	True
Well:	Ward T-20-19HC	Survey Calculation Method:	Minimum Curvature
Wellbore:	Wellbore #1		
Design:	Plan #2 (6-14-16)		

Planned Survey									
Measured Depth (ft)	Inclination (°)	Azimuth (°)	Vertical Depth (ft)	+N/-S (ft)	+E/-W (ft)	Vertical Section (ft)	Dogleg Rate (°/100usft)	Build Rate (°/100usft)	Turn Rate (°/100usft)
5,200.0	11.62	33.86	5,136.8	537.6	360.7	-343.9	0.00	0.00	0.00
5,300.0	11.62	33.86	5,234.7	554.3	371.9	-354.6	0.00	0.00	0.00
5,400.0	11.62	33.86	5,332.7	571.0	383.2	-365.3	0.00	0.00	0.00
5,500.0	11.62	33.86	5,430.6	587.7	394.4	-376.0	0.00	0.00	0.00
5,600.0	11.62	33.86	5,528.6	604.5	405.6	-386.7	0.00	0.00	0.00
5,700.0	11.62	33.86	5,626.5	621.2	416.8	-397.4	0.00	0.00	0.00
5,798.4	11.62	33.86	5,722.9	637.6	427.9	-407.9	0.00	0.00	0.00
Start Drop -2.00									
5,800.0	11.59	33.86	5,724.5	637.9	428.1	-408.1	1.95	-1.95	0.00
5,900.0	9.59	33.86	5,822.8	653.2	438.3	-417.8	2.00	-2.00	0.00
6,000.0	7.59	33.86	5,921.7	665.6	446.6	-425.7	2.00	-2.00	0.00
6,100.0	5.59	33.86	6,021.0	675.1	453.0	-431.8	2.00	-2.00	0.00
6,200.0	3.59	33.86	6,120.7	681.7	457.5	-436.1	2.00	-2.00	0.00
6,300.0	1.59	33.86	6,220.6	685.5	460.0	-438.5	2.00	-2.00	0.00
6,379.4	0.00	0.00	6,300.0	686.4	460.6	-439.1	2.00	-2.00	0.00
6,400.0	0.00	0.00	6,320.6	686.4	460.6	-439.1	0.00	0.00	0.00
6,493.3	0.00	0.00	6,413.8	686.4	460.6	-439.1	0.00	0.00	0.00
6,500.0	0.54	268.11	6,420.6	686.4	460.6	-439.0	8.00	8.00	0.00
6,600.0	8.54	268.11	6,520.2	686.1	452.7	-431.2	8.00	8.00	0.00
6,700.0	16.54	268.11	6,617.7	685.4	431.0	-409.5	8.00	8.00	0.00
6,800.0	24.54	268.11	6,711.3	684.3	396.0	-374.5	8.00	8.00	0.00
6,900.0	32.54	268.11	6,799.0	682.7	348.2	-326.9	8.00	8.00	0.00
7,000.0	40.54	268.11	6,879.3	680.7	288.8	-267.5	8.00	8.00	0.00
7,100.0	48.54	268.11	6,950.5	678.4	218.7	-197.6	8.00	8.00	0.00
7,200.0	56.54	268.11	7,011.3	675.8	139.5	-118.4	8.00	8.00	0.00
7,300.0	64.54	268.11	7,060.5	672.9	52.5	-31.6	8.00	8.00	0.00
7,400.0	72.54	268.11	7,097.0	669.9	-40.4	61.2	8.00	8.00	0.00
7,500.0	80.54	268.11	7,120.3	666.7	-137.5	158.2	8.00	8.00	0.00
7,600.0	88.54	268.11	7,129.8	663.4	-237.0	257.4	8.00	8.00	0.00
7,620.6	90.19	268.11	7,130.0	662.7	-257.5	278.0	8.00	8.00	0.00
7,620.7	90.19	268.11	7,130.0	662.7	-257.6	278.1	0.00	0.00	0.00
Start DLS 2.00 TFO 90.10									
7,650.9	90.19	268.71	7,129.9	661.9	-287.8	308.2	2.00	0.00	2.00
7,700.0	90.19	268.71	7,129.7	660.8	-336.9	357.3	0.00	0.00	0.00
7,800.0	90.19	268.71	7,129.4	658.5	-436.9	457.1	0.00	0.00	0.00
7,900.0	90.19	268.71	7,129.1	656.3	-536.9	557.0	0.00	0.00	0.00
8,000.0	90.19	268.71	7,128.7	654.0	-636.8	656.8	0.00	0.00	0.00
8,100.0	90.19	268.71	7,128.4	651.8	-736.8	756.7	0.00	0.00	0.00
8,200.0	90.19	268.71	7,128.1	649.5	-836.8	856.5	0.00	0.00	0.00
8,300.0	90.19	268.71	7,127.8	647.3	-936.8	956.4	0.00	0.00	0.00
8,400.0	90.19	268.71	7,127.4	645.0	-1,036.7	1,056.3	0.00	0.00	0.00
8,500.0	90.19	268.71	7,127.1	642.8	-1,136.7	1,156.1	0.00	0.00	0.00
8,600.0	90.19	268.71	7,126.8	640.5	-1,236.7	1,256.0	0.00	0.00	0.00
8,700.0	90.19	268.71	7,126.4	638.3	-1,336.7	1,355.8	0.00	0.00	0.00
8,800.0	90.19	268.71	7,126.1	636.1	-1,436.6	1,455.7	0.00	0.00	0.00
8,900.0	90.19	268.71	7,125.8	633.8	-1,536.6	1,555.5	0.00	0.00	0.00
9,000.0	90.19	268.71	7,125.5	631.6	-1,636.6	1,655.4	0.00	0.00	0.00
9,100.0	90.19	268.71	7,125.1	629.3	-1,736.6	1,755.2	0.00	0.00	0.00
9,200.0	90.19	268.71	7,124.8	627.1	-1,836.5	1,855.1	0.00	0.00	0.00
9,300.0	90.19	268.71	7,124.5	624.8	-1,936.5	1,955.0	0.00	0.00	0.00
9,400.0	90.19	268.71	7,124.1	622.6	-2,036.5	2,054.8	0.00	0.00	0.00
9,500.0	90.19	268.71	7,123.8	620.3	-2,136.5	2,154.7	0.00	0.00	0.00
9,600.0	90.19	268.71	7,123.5	618.1	-2,236.4	2,254.5	0.00	0.00	0.00
9,700.0	90.19	268.71	7,123.1	615.8	-2,336.4	2,354.4	0.00	0.00	0.00

Database:	US_EDM	Local Co-ordinate Reference:	Well Ward T-20-19HC
Company:	Bayswater Exploration & Production, LLC	TVD Reference:	WELL @ 4751.0ft (RKB - 23')
Project:	SEC.20-T6N-R66W	MD Reference:	WELL @ 4751.0ft (RKB - 23')
Site:	Ward 20-M Pad Sec. 20-T6N-R66W	North Reference:	True
Well:	Ward T-20-19HC	Survey Calculation Method:	Minimum Curvature
Wellbore:	Wellbore #1		
Design:	Plan #2 (6-14-16)		

Planned Survey									
Measured Depth (ft)	Inclination (°)	Azimuth (°)	Vertical Depth (ft)	+N/-S (ft)	+E/-W (ft)	Vertical Section (ft)	Dogleg Rate (°/100usft)	Build Rate (°/100usft)	Turn Rate (°/100usft)
9,800.0	90.19	268.71	7,122.8	613.6	-2,436.4	2,454.2	0.00	0.00	0.00
9,900.0	90.19	268.71	7,122.5	611.3	-2,536.3	2,554.1	0.00	0.00	0.00
10,000.0	90.19	268.71	7,122.2	609.1	-2,636.3	2,654.0	0.00	0.00	0.00
10,100.0	90.19	268.71	7,121.8	606.9	-2,736.3	2,753.8	0.00	0.00	0.00
10,200.0	90.19	268.71	7,121.5	604.6	-2,836.3	2,853.7	0.00	0.00	0.00
10,300.0	90.19	268.71	7,121.2	602.4	-2,936.2	2,953.5	0.00	0.00	0.00
10,400.0	90.19	268.71	7,120.8	600.1	-3,036.2	3,053.4	0.00	0.00	0.00
10,500.0	90.19	268.71	7,120.5	597.9	-3,136.2	3,153.2	0.00	0.00	0.00
10,600.0	90.19	268.71	7,120.2	595.6	-3,236.2	3,253.1	0.00	0.00	0.00
10,700.0	90.19	268.71	7,119.8	593.4	-3,336.1	3,353.0	0.00	0.00	0.00
10,800.0	90.19	268.71	7,119.5	591.1	-3,436.1	3,452.8	0.00	0.00	0.00
10,900.0	90.19	268.71	7,119.2	588.9	-3,536.1	3,552.7	0.00	0.00	0.00
11,000.0	90.19	268.71	7,118.9	586.6	-3,636.1	3,652.5	0.00	0.00	0.00
11,100.0	90.19	268.71	7,118.5	584.4	-3,736.0	3,752.4	0.00	0.00	0.00
11,200.0	90.19	268.71	7,118.2	582.2	-3,836.0	3,852.2	0.00	0.00	0.00
11,300.0	90.19	268.71	7,117.9	579.9	-3,936.0	3,952.1	0.00	0.00	0.00
11,400.0	90.19	268.71	7,117.5	577.7	-4,036.0	4,051.9	0.00	0.00	0.00
11,500.0	90.19	268.71	7,117.2	575.4	-4,135.9	4,151.8	0.00	0.00	0.00
11,600.0	90.19	268.71	7,116.9	573.2	-4,235.9	4,251.7	0.00	0.00	0.00
11,700.0	90.19	268.71	7,116.5	570.9	-4,335.9	4,351.5	0.00	0.00	0.00
11,800.0	90.19	268.71	7,116.2	568.7	-4,435.9	4,451.4	0.00	0.00	0.00
11,900.0	90.19	268.71	7,115.9	566.4	-4,535.8	4,551.2	0.00	0.00	0.00
12,000.0	90.19	268.71	7,115.6	564.2	-4,635.8	4,651.1	0.00	0.00	0.00
12,100.0	90.19	268.71	7,115.2	561.9	-4,735.8	4,750.9	0.00	0.00	0.00
12,200.0	90.19	268.71	7,114.9	559.7	-4,835.8	4,850.8	0.00	0.00	0.00
12,300.0	90.19	268.71	7,114.6	557.5	-4,935.7	4,950.7	0.00	0.00	0.00
12,400.0	90.19	268.71	7,114.2	555.2	-5,035.7	5,050.5	0.00	0.00	0.00
12,473.0	90.19	268.71	7,114.0	553.6	-5,108.7	5,123.4	0.00	0.00	0.00
Start DLS 2.00 TFO -79.70									
12,491.8	90.26	268.35	7,113.9	553.1	-5,127.4	5,142.1	1.99	0.36	-1.96
12,500.0	90.26	268.35	7,113.9	552.9	-5,135.7	5,150.4	0.00	0.00	0.00
12,600.0	90.26	268.35	7,113.4	550.0	-5,235.6	5,250.2	0.00	0.00	0.00
12,700.0	90.26	268.35	7,113.0	547.1	-5,335.6	5,350.0	0.00	0.00	0.00
12,800.0	90.26	268.35	7,112.6	544.2	-5,435.5	5,449.8	0.00	0.00	0.00
12,900.0	90.26	268.35	7,112.1	541.3	-5,535.5	5,549.6	0.00	0.00	0.00
13,000.0	90.26	268.35	7,111.7	538.4	-5,635.5	5,649.5	0.00	0.00	0.00
13,100.0	90.26	268.35	7,111.2	535.5	-5,735.4	5,749.3	0.00	0.00	0.00
13,200.0	90.26	268.35	7,110.8	532.6	-5,835.4	5,849.1	0.00	0.00	0.00
13,300.0	90.26	268.35	7,110.3	529.7	-5,935.3	5,948.9	0.00	0.00	0.00
13,400.0	90.26	268.35	7,109.9	526.9	-6,035.3	6,048.7	0.00	0.00	0.00
13,500.0	90.26	268.35	7,109.4	524.0	-6,135.2	6,148.6	0.00	0.00	0.00
13,600.0	90.26	268.35	7,109.0	521.1	-6,235.2	6,248.4	0.00	0.00	0.00
13,700.0	90.26	268.35	7,108.5	518.2	-6,335.2	6,348.2	0.00	0.00	0.00
13,800.0	90.26	268.35	7,108.1	515.3	-6,435.1	6,448.0	0.00	0.00	0.00
13,900.0	90.26	268.35	7,107.6	512.4	-6,535.1	6,547.8	0.00	0.00	0.00
14,000.0	90.26	268.35	7,107.2	509.5	-6,635.0	6,647.7	0.00	0.00	0.00
14,100.0	90.26	268.35	7,106.7	506.6	-6,735.0	6,747.5	0.00	0.00	0.00
14,200.0	90.26	268.35	7,106.3	503.8	-6,834.9	6,847.3	0.00	0.00	0.00
14,300.0	90.26	268.35	7,105.9	500.9	-6,934.9	6,947.1	0.00	0.00	0.00
14,400.0	90.26	268.35	7,105.4	498.0	-7,034.9	7,046.9	0.00	0.00	0.00
14,500.0	90.26	268.35	7,105.0	495.1	-7,134.8	7,146.8	0.00	0.00	0.00
14,600.0	90.26	268.35	7,104.5	492.2	-7,234.8	7,246.6	0.00	0.00	0.00
14,700.0	90.26	268.35	7,104.1	489.3	-7,334.7	7,346.4	0.00	0.00	0.00

Database:	US_EDM	Local Co-ordinate Reference:	Well Ward T-20-19HC
Company:	Bayswater Exploration & Production, LLC	TVD Reference:	WELL @ 4751.0ft (RKB - 23')
Project:	SEC.20-T6N-R66W	MD Reference:	WELL @ 4751.0ft (RKB - 23')
Site:	Ward 20-M Pad Sec. 20-T6N-R66W	North Reference:	True
Well:	Ward T-20-19HC	Survey Calculation Method:	Minimum Curvature
Wellbore:	Wellbore #1		
Design:	Plan #2 (6-14-16)		

Planned Survey									
Measured Depth (ft)	Inclination (°)	Azimuth (°)	Vertical Depth (ft)	+N/-S (ft)	+E/-W (ft)	Vertical Section (ft)	Dogleg Rate (°/100usft)	Build Rate (°/100usft)	Turn Rate (°/100usft)
14,800.0	90.26	268.35	7,103.6	486.4	-7,434.7	7,446.2	0.00	0.00	0.00
14,900.0	90.26	268.35	7,103.2	483.5	-7,534.7	7,546.0	0.00	0.00	0.00
15,000.0	90.26	268.35	7,102.7	480.7	-7,634.6	7,645.8	0.00	0.00	0.00
15,100.0	90.26	268.35	7,102.3	477.8	-7,734.6	7,745.7	0.00	0.00	0.00
15,163.1	90.26	268.35	7,102.0	475.9	-7,797.6	7,808.7	0.00	0.00	0.00
Start DLS 2.00 TFO -82.20									
15,200.0	90.36	267.61	7,101.8	474.6	-7,834.5	7,845.5	2.00	0.27	-1.98
15,243.0	90.47	266.76	7,101.5	472.5	-7,877.5	7,888.3	2.00	0.27	-1.98
15,300.0	90.47	266.76	7,101.0	469.3	-7,934.4	7,945.1	0.00	0.00	0.00
15,400.0	90.47	266.76	7,100.2	463.7	-8,034.2	8,044.7	0.00	0.00	0.00
15,500.0	90.47	266.76	7,099.4	458.0	-8,134.0	8,144.3	0.00	0.00	0.00
15,600.0	90.47	266.76	7,098.5	452.4	-8,233.9	8,244.0	0.00	0.00	0.00
15,700.0	90.47	266.76	7,097.7	446.7	-8,333.7	8,343.6	0.00	0.00	0.00
15,800.0	90.47	266.76	7,096.9	441.1	-8,433.6	8,443.2	0.00	0.00	0.00
15,900.0	90.47	266.76	7,096.1	435.4	-8,533.4	8,542.8	0.00	0.00	0.00
16,000.0	90.47	266.76	7,095.2	429.8	-8,633.2	8,642.4	0.00	0.00	0.00
16,100.0	90.47	266.76	7,094.4	424.1	-8,733.1	8,742.0	0.00	0.00	0.00
16,200.0	90.47	266.76	7,093.6	418.5	-8,832.9	8,841.6	0.00	0.00	0.00
16,300.0	90.47	266.76	7,092.8	412.8	-8,932.7	8,941.2	0.00	0.00	0.00
16,400.0	90.47	266.76	7,091.9	407.2	-9,032.6	9,040.9	0.00	0.00	0.00
16,500.0	90.47	266.76	7,091.1	401.5	-9,132.4	9,140.5	0.00	0.00	0.00
16,600.0	90.47	266.76	7,090.3	395.9	-9,232.2	9,240.1	0.00	0.00	0.00
16,700.0	90.47	266.76	7,089.5	390.3	-9,332.1	9,339.7	0.00	0.00	0.00
16,800.0	90.47	266.76	7,088.6	384.6	-9,431.9	9,439.3	0.00	0.00	0.00
16,900.0	90.47	266.76	7,087.8	379.0	-9,531.8	9,538.9	0.00	0.00	0.00
17,000.0	90.47	266.76	7,087.0	373.3	-9,631.6	9,638.5	0.00	0.00	0.00
17,100.0	90.47	266.76	7,086.2	367.7	-9,731.4	9,738.2	0.00	0.00	0.00
17,200.0	90.47	266.76	7,085.3	362.0	-9,831.3	9,837.8	0.00	0.00	0.00
17,300.0	90.47	266.76	7,084.5	356.4	-9,931.1	9,937.4	0.00	0.00	0.00
17,400.0	90.47	266.76	7,083.7	350.7	-10,030.9	10,037.0	0.00	0.00	0.00
17,500.0	90.47	266.76	7,082.9	345.1	-10,130.8	10,136.6	0.00	0.00	0.00
17,600.0	90.47	266.76	7,082.1	339.4	-10,230.6	10,236.2	0.00	0.00	0.00
17,700.0	90.47	266.76	7,081.2	333.8	-10,330.5	10,335.8	0.00	0.00	0.00
17,800.0	90.47	266.76	7,080.4	328.1	-10,430.3	10,435.5	0.00	0.00	0.00
17,848.6	90.47	266.76	7,080.0	325.4	-10,478.8	10,483.9	0.00	0.00	0.00
TD at 17848.6									

Database:	US_EDM	Local Co-ordinate Reference:	Well Ward T-20-19HC
Company:	Bayswater Exploration & Production, LLC	TVD Reference:	WELL @ 4751.0ft (RKB - 23')
Project:	SEC.20-T6N-R66W	MD Reference:	WELL @ 4751.0ft (RKB - 23')
Site:	Ward 20-M Pad Sec. 20-T6N-R66W	North Reference:	True
Well:	Ward T-20-19HC	Survey Calculation Method:	Minimum Curvature
Wellbore:	Wellbore #1		
Design:	Plan #2 (6-14-16)		

Design Targets									
Target Name - hit/miss target - Shape	Dip Angle (°)	Dip Dir. (°)	TVD (ft)	+N/-S (ft)	+E/-W (ft)	Northing (usft)	Easting (usft)	Latitude	Longitude
SHL 319'FSL, 213'FEL, : - plan hits target center - Point	0.00	0.00	1.0	0.0	0.0	1,413,852.12	3,196,665.94	40.467274	-104.793156
BHL 967'FSL, 470'FWL, - plan hits target center - Point	0.00	0.00	7,080.0	325.4	-10,478.8	1,414,093.95	3,186,185.24	40.468161	-104.830817
Boreline Vertex 976'FSL - plan hits target center - Point	0.00	0.00	7,102.0	475.9	-7,797.7	1,414,265.87	3,188,865.03	40.468577	-104.821181
Boreline Vertex 981'FSL - plan hits target center - Point	0.00	0.00	7,114.0	553.6	-5,108.7	1,414,364.92	3,191,553.15	40.468792	-104.811517
LPL 985'FSL, 470'FEL, : - plan hits target center - Point	0.00	0.00	7,130.0	662.7	-257.6	1,414,512.71	3,196,403.02	40.469093	-104.794082

Casing Points					
Measured Depth (ft)	Vertical Depth (ft)	Name		Casing Diameter (")	Hole Diameter (")
7,620.7	7,130.0	7"		7	8-3/4

Plan Annotations				
Measured Depth (ft)	Vertical Depth (ft)	Local Coordinates		Comment
		+N/-S (ft)	+E/-W (ft)	
1,600.0	1,600.0	0.0	0.0	KOP - Start Build 1.50
5,798.4	5,723.0	65.0	43.6	Start Drop -2.00
7,620.7	7,130.0	637.6	427.9	Start DLS 2.00 TFO 90.10
12,473.0	7,114.0	686.4	460.6	Start DLS 2.00 TFO -79.70
15,163.1	7,102.0	686.4	460.6	Start DLS 2.00 TFO -82.20
17,848.6	7,080.0	662.7	-257.6	TD at 17848.6