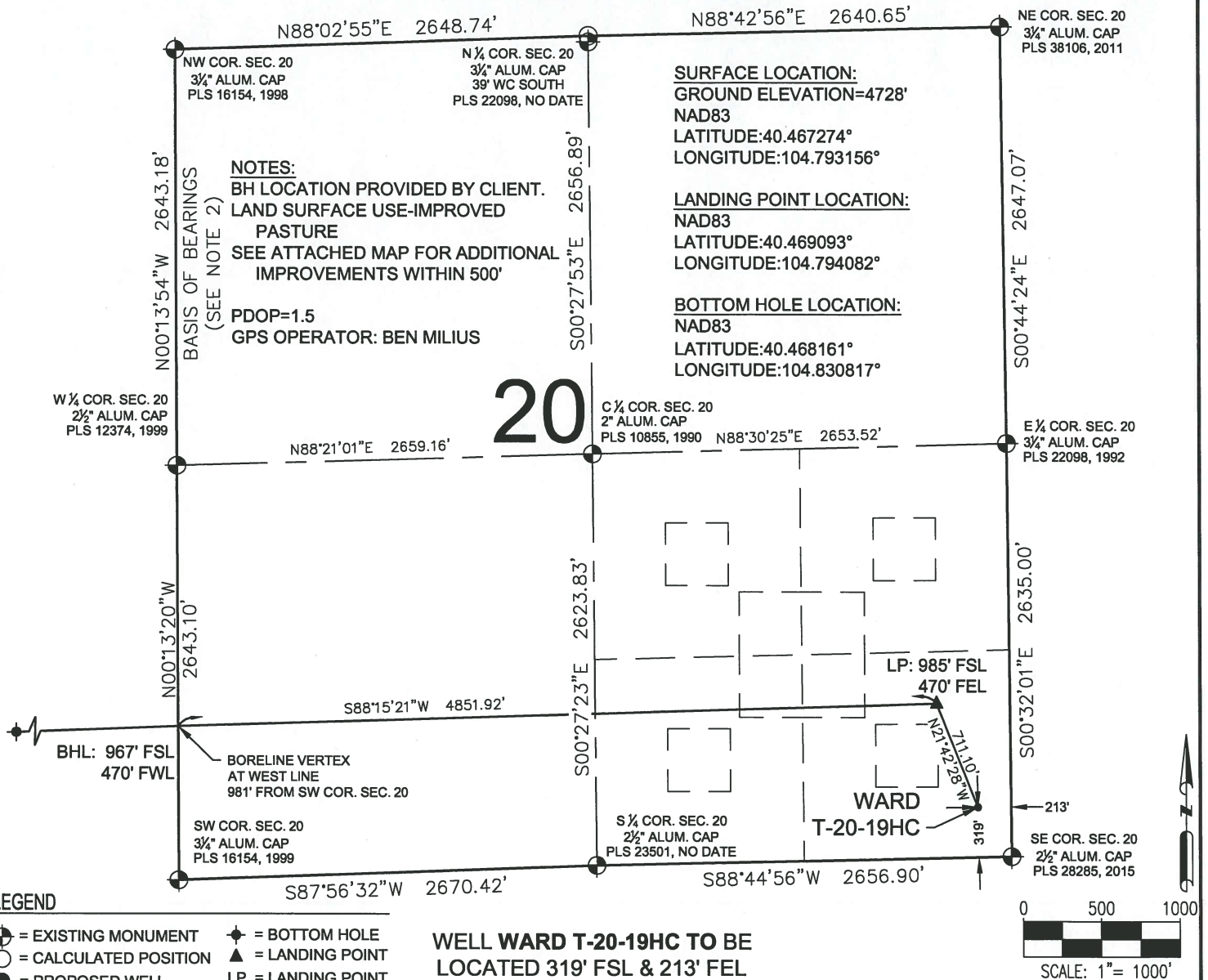




WARD T-20-19HC WELL LOCATION CERTIFICATE



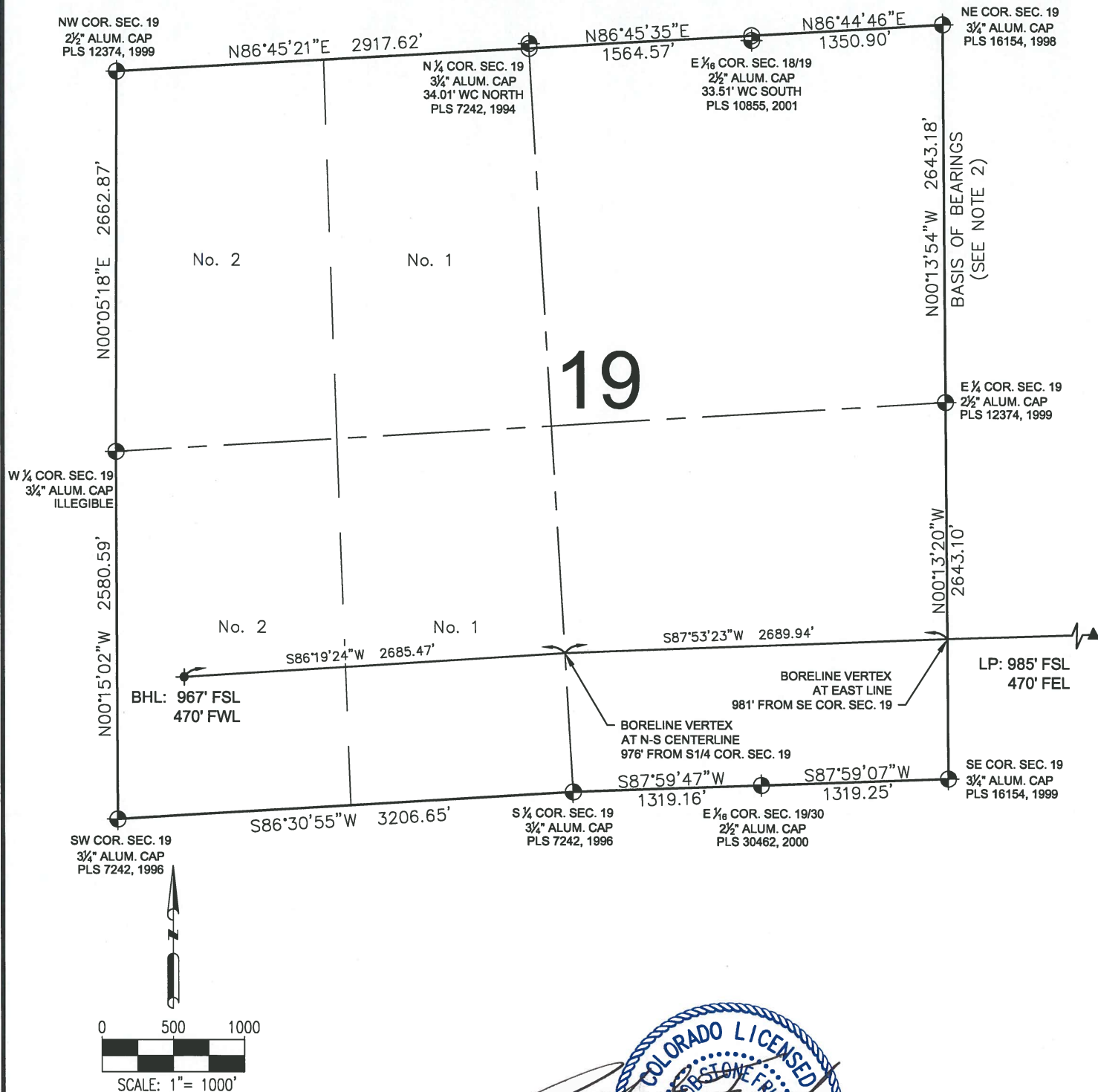
- NOTES:**
1. THIS FIELD SURVEY CONFORMS TO THE MINIMUM STANDARDS SET BY THE C.O.G.C.C., RULE NO. 215
 2. BEARINGS ARE BASED ON THE ASSUMPTION THAT THE WEST LINE OF THE NORTHWEST QUARTER OF SECTION 20, BEARS N00°13'54"W BETWEEN THE MONUMENTS SHOWN HEREON.
 3. GRID DISTANCES ARE SHOWN, AS GPS MEASURED IN THE FIELD, WITH TIES TO WELLS MEASURED PERPENDICULAR TO SECTION LINES. TO GET GROUND DISTANCES MULTIPLY THE SHOWN DISTANCE BY 1.000257471.
 4. ELEVATIONS SHOWN ARE NAVD 88, AS DERIVED BY GPS OBSERVATIONS.
 5. SECTION MONUMENTS RECOVERED ON 8/19/14, 6/9/15, AND 7/8/15. WELLS STAKED ON 7/8/15. REVISED WELL LOCATION STAKED ON 10/19/15.



SHEET 1 OF 2

PREPARED BY:  Petroleum Field Services, LLC 7535 Hilltop Circle Denver, CO 80221	FIELD DATE: 10-19-15 DRAWING DATE: 02-15-16 BY: KAD CHECKED BY: JLW	WELL NAME: WARD T-20-19HC SURFACE LOCATION: SE1/4 SE1/4 SEC. 20, T6N, R66W, 6TH P.M. WELD COUNTY, COLORADO	PREPARED FOR:  BAYSWATER EXPLORATION AND PRODUCTION, LLC
--	--	---	--

WARD T-20-19HC WELL LOCATION CERTIFICATE





LEGEND

- ⊕ = EXISTING MONUMENT ⊕ = BOTTOM HOLE
- = CALCULATED POSITION ▲ = LANDING POINT
- = PROPOSED WELL LP = LANDING POINT
- ◆ = EXISTING WELL BHL = BOTTOM HOLE

JACOB S. FRISCH, PLS 38149
 DATE: 02-16-16
 JOB NO: B14.BEP.0102
 FOR AND ON BEHALF OF P.F.S., LLC



SHEET 2 OF 2

PREPARED BY:  Petroleum Field Services, LLC 7535 Hilltop Circle Denver, CO 80221	FIELD DATE: 10-19-15 DRAWING DATE: 02-15-16 BY: KAD	WELL NAME: WARD T-20-19HC SURFACE LOCATION: SE1/4 SE1/4 SEC. 20, T6N, R66W, 6TH P.M. WELD COUNTY, COLORADO	PREPARED FOR:  BAYSWATER EXPLORATION AND PRODUCTION, LLC
	CHECKED BY: JLW		