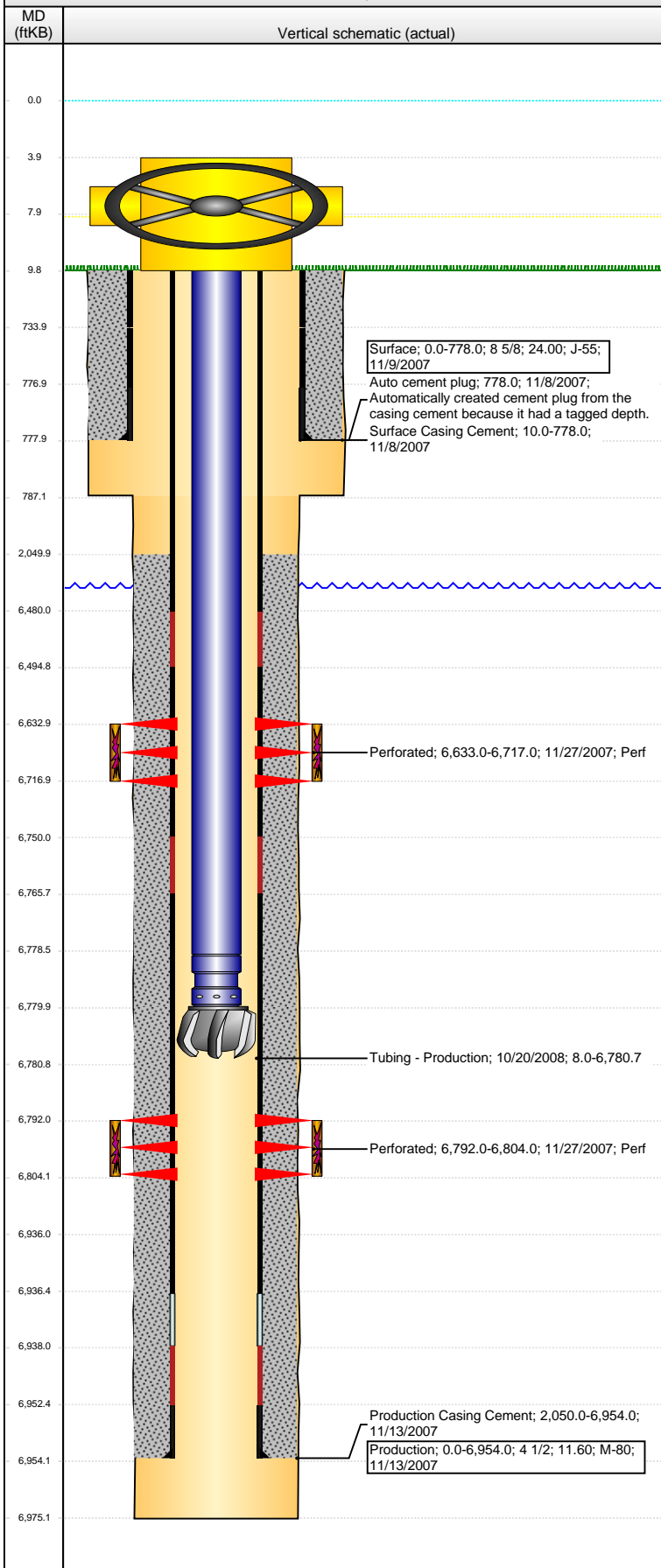


Well Name: LARSON A 25-03X

VERTICAL - ORIGINAL HOLE, 2/8/2016 2:47:27 PM



Well Header

API 05-123-26476	Business Unit DJ BASIN	District 15	Well Config VERTICAL
Original KB Elevation (ft) 4,647.00	KB - GL / MSL (ftKB) 10.00	Spud Date 11/7/2007	P & A Date
Comment			

Directions To Well

WCR 59 & 66, EAST 2/10, SOUTH 1/10, EAST 1/10 INTO

Congressional Location

Quarter 1	Quarter 2	Quarter 3	Quarter 4	Section	Township	Twnshp N...	Range	Rng E/W Dir
		NE	NW	25	6	N	64	W

Bottom Hole Location

North-South Distance (ft)	From N or S Line	East-West Distance (ft)	From E or W Line

Plug Back Total Depths

Date	Depth (ftKB)	Method	Com
11/12/2007	6,936.0	CASING TALLY	

Wellbore Sections

Section Des	Size (in)	Act Top, MD (ftKB)	Act Btm, MD (ftKB)
Surface	12 1/4	10.0	787.0
Production	7 7/8	787.0	6,975.0

Zone Statuses

Zone Name	Status Date	Status	Fluid Type	Job	Prod Method
CODELL	3/3/2008	PR		DRILLING/CO...	
NIOBRARA	3/3/2008	PR		DRILLING/CO...	

Casing Strings

Surface, 778.0ftKB						
Casing Description	Run Date	OD (in)	Wt/Len (l...	Grade	Top, MD (ft...	MD (ftKB)
Surface	11/9/2007	8 5/8	24.00	J-55	0.0	778.0

Production, 6,954.0ftKB

Casing Description	Run Date	OD (in)	Wt/Len (l...	Grade	Top, MD (ft...	MD (ftKB)
Production	11/13/2007	4 1/2	11.60	M-80	0.0	6,954.0

Cement

Description	Top Depth (ftKB)	Bottom Depth (ftKB)
Surface Casing Cement	10.0	778.0
Production Casing Cement	2,050.0	6,954.0

Tubing Strings

Tubing Description	Run Date	String...	ID (in)	Wt (lb/ft)	Grade	Len (ft)	Set De...
Tubing - Production	10/20/2008	2 3/8	1.995	4.70	J-55	6,772.71	

Tubing Components

Item Des	OD (in)	Wt (lb/ft)	Grade	Jts	Len (ft)	Btm (ftKB)	Btm (TVD) (ftKB)
Tubing	2 3/8	4.70	J-55	221	6,770.61	6,778.6	
Pump Seating Nipple	2 3/8			1	1.20	6,779.8	
Blade Bit	3 7/8			1	0.90	6,780.7	

Perforation Data

Zone	Bnch/St g	Entered Shot Total	Top (ftKB)	Btm (ftKB)	Date
NIOBRARA, ORIGINAL HOLE	B	48	6,633.00	6,717.00	11/27/2007
CODELL, ORIGINAL HOLE		48	6,792.00	6,804.00	11/27/2007

Stimulations & Treatments

Date	Zone	Primary Job Type
12/7/2007	CODELL, ORIGINAL HOLE	DRILLING/COMPLETION - ORIGINAL
Technical Result		Tech Result Details
		Tech Result Note
Comment		

Date	Zone	Primary Job Type
12/7/2007	NIOBRARA, ORIGINAL HOLE	DRILLING/COMPLETION - ORIGINAL
Technical Result		Tech Result Details
		Tech Result Note
Comment		

Other In Hole

Run Date	Des	OD (in)	Top (ftKB)	Btm (ftKB)

Well Name: LARSON A 25-03X

VERTICAL - ORIGINAL HOLE, 2/8/2016 2:47:30 PM

Logs

Date	Type	Top, MD (ftKB)	Btm, MD (ftKB)
11/13/2007	Compensated Density	2,700.0	6,948.0
11/13/2007	Induction	777.0	6,968.0
11/26/2007	Cement Bond	1,910.0	6,906.0
3/31/2014	GYRO	12.0	6,700.0

