

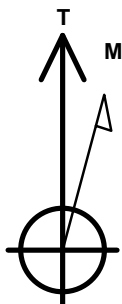
# Bayswater Exploration & Production, LLC

Well Name: **Ward U-20-19HN**

Surface Location: Ward 20-M Pad Sec. 20-T6N-R66W  
North American Datum 1983 , US State Plane 1983, Colorado Northern Zone  
Ground Elevation: 4727.0  
+N/-S +E/-W Northing Easting Latitude Longitude Slot  
0.0 10.0 19837.1 19666.05 40.467233 -104.793156  
RKB - 23' WELL @ 4750.0ft (RKB - 23')

## DESIGN TARGET DETAILS

Name	TVD	+N/-S	+E/-W	Shape
SHL 304'FSL, 213'FEL, SEC.20	1.0	0.0	0.0	Point
BHL 741'FSL, 470'FWL, SEC.19	6920.0	113.7	-10479.8	Point
Boreline Vertex 748'FSL	6942.0	263.2	-7786.6	Point
Boreline Vertex 752'FSL	6954.0	339.7	-5109.6	Point
LPL 755'FSL, 470'FEL, SEC.20	6970.0	447.7	-257.4	Point



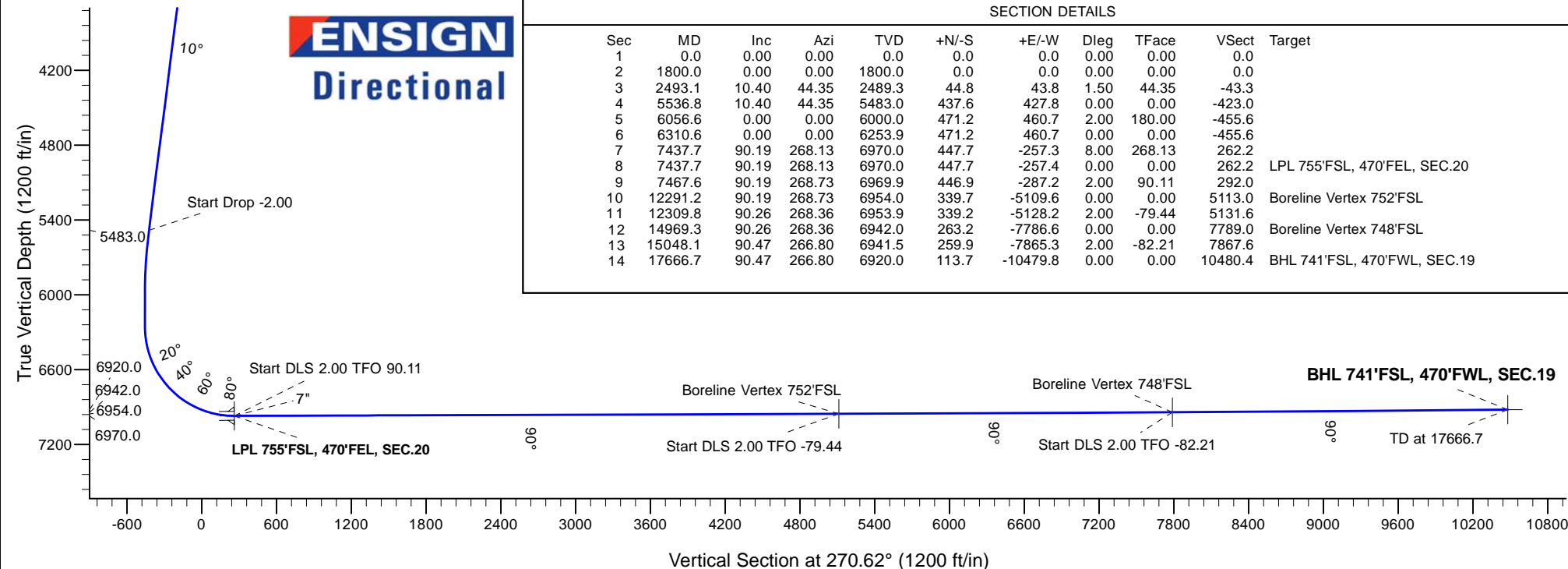
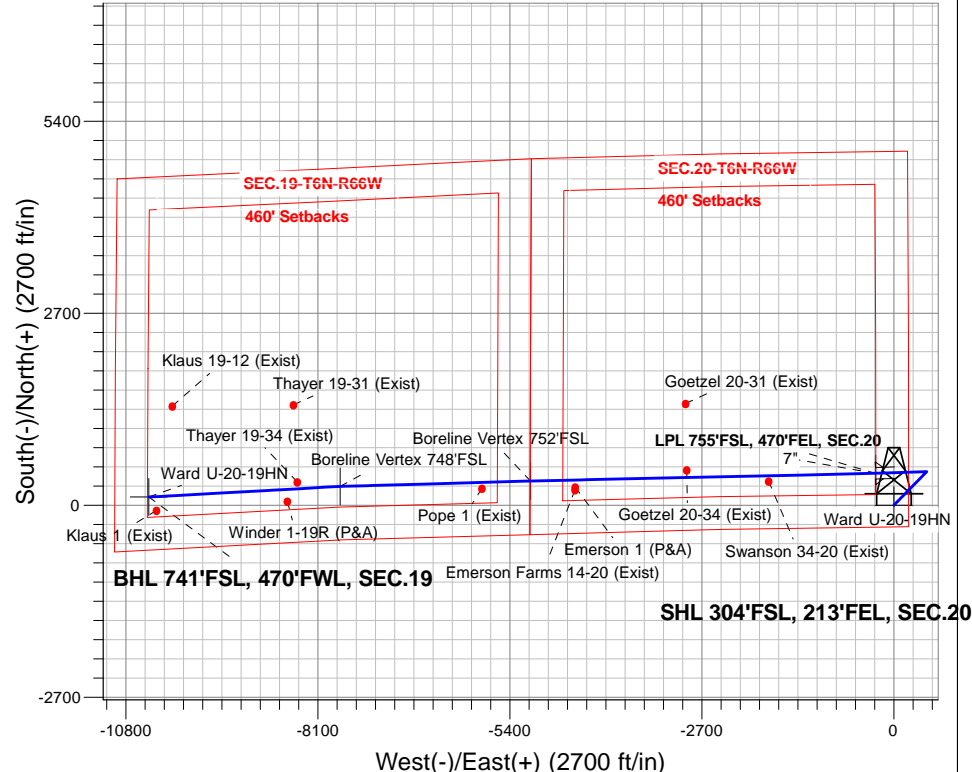
Azimuths to True North  
Magnetic North: 8.21°

Magnetic Field  
Strength: 52637.1snT  
Dip Angle: 66.93°  
Date: 6/16/2016  
Model: IGRF2010

Ward 20-M Pad Sec. 20-T6N-R66W  
Ward U-20-19HN  
Plan #2 (6-14-16)  
11:35, June 16 2016

## ANNOTATIONS

TVD	MD	Annotation
1800.0	1800.0	KOP - Start Build 1.50
5483.0	5536.8	Start Drop -2.00
6970.0	7437.7	Start DLS 2.00 TFO 90.11
6954.0	12291.2	Start DLS 2.00 TFO -79.44
6942.0	14969.3	Start DLS 2.00 TFO -82.21
6920.0	17666.7	TD at 17666.7





# **Bayswater Exploration & Production, LLC**

**SEC.20-T6N-R66W**

**Ward 20-M Pad Sec. 20-T6N-R66W**

**Ward U-20-19HN**

**Wellbore #1**

**Plan: Plan #2 (6-14-16)**

## **Standard Planning Report**

**16 June, 2016**



**BAYSWATER**  
**EXPLORATION & PRODUCTION, LLC**

<b>Database:</b>	US_EDM	<b>Local Co-ordinate Reference:</b>	Well Ward U-20-19HN
<b>Company:</b>	Bayswater Exploration & Production, LLC	<b>TVD Reference:</b>	WELL @ 4750.0ft (RKB - 23')
<b>Project:</b>	SEC.20-T6N-R66W	<b>MD Reference:</b>	WELL @ 4750.0ft (RKB - 23')
<b>Site:</b>	Ward 20-M Pad Sec. 20-T6N-R66W	<b>North Reference:</b>	True
<b>Well:</b>	Ward U-20-19HN	<b>Survey Calculation Method:</b>	Minimum Curvature
<b>Wellbore:</b>	Wellbore #1		
<b>Design:</b>	Plan #2 (6-14-16)		

<b>Project</b>	SEC.20-T6N-R66W, Weld County, Colorado		
<b>Map System:</b>	US State Plane 1983	<b>System Datum:</b>	Mean Sea Level
<b>Geo Datum:</b>	North American Datum 1983		Using Well Reference Point
<b>Map Zone:</b>	Colorado Northern Zone		Using geodetic scale factor

<b>Site</b>	Ward 20-M Pad Sec. 20-T6N-R66W			
<b>Site Position:</b>		<b>Northing:</b>	1,413,957.04 usft	<b>Latitude:</b> 40.467562
<b>From:</b>	Lat/Long	<b>Easting:</b>	3,196,665.10 usft	<b>Longitude:</b> -104.793156
<b>Position Uncertainty:</b>	0.0 ft	<b>Slot Radius:</b>	13-3/16 "	<b>Grid Convergence:</b> 0.46 °

<b>Well</b>	Ward U-20-19HN			
<b>Well Position</b>	<b>+N/-S</b>	-119.9 ft	<b>Northing:</b>	1,413,837.18 usft
	<b>+E/-W</b>	0.0 ft	<b>Easting:</b>	3,196,666.06 usft
<b>Position Uncertainty</b>		0.0 ft	<b>Wellhead Elevation:</b>	0.0 ft
			<b>Ground Level:</b>	4,727.0 ft

<b>Wellbore</b>	Wellbore #1				
<b>Magnetics</b>	<b>Model Name</b>	<b>Sample Date</b>	<b>Declination (°)</b>	<b>Dip Angle (°)</b>	<b>Field Strength (nT)</b>
	IGRF2010	6/16/2016	8.21	66.93	52,637

<b>Design</b>	Plan #2 (6-14-16)			
<b>Audit Notes:</b>				
<b>Version:</b>	<b>Phase:</b>	PROTOTYPE	<b>Tie On Depth:</b>	0.0
<b>Vertical Section:</b>	<b>Depth From (TVD) (ft)</b>	<b>+N/-S (ft)</b>	<b>+E/-W (ft)</b>	<b>Direction (°)</b>
	0.0	0.0	0.0	270.62

<b>Plan Sections</b>										
Measured Depth (ft)	Inclination (°)	Azimuth (°)	Vertical Depth (ft)	+N/-S (ft)	+E/-W (ft)	Dogleg Rate (°/100usft)	Build Rate (°/100usft)	Turn Rate (°/100usft)	TFO (°)	Target
0.0	0.00	0.00	0.0	0.0	0.0	0.00	0.00	0.00	0.00	
1,800.0	0.00	0.00	1,800.0	0.0	0.0	0.00	0.00	0.00	0.00	
2,493.1	10.40	44.35	2,489.3	44.8	43.8	1.50	1.50	0.00	44.35	
5,536.8	10.40	44.35	5,483.0	437.6	427.8	0.00	0.00	0.00	0.00	
6,056.6	0.00	0.00	6,000.0	471.2	460.7	2.00	-2.00	0.00	180.00	
6,310.6	0.00	0.00	6,253.9	471.2	460.7	0.00	0.00	0.00	0.00	
7,437.7	90.19	268.13	6,970.0	447.7	-257.3	8.00	8.00	0.00	268.13	
7,437.7	90.19	268.13	6,970.0	447.7	-257.4	0.00	0.00	0.00	0.00	LPL 755'FSL, 470'FEI
7,467.6	90.19	268.73	6,969.9	446.9	-287.2	2.00	0.00	2.00	90.11	
12,291.2	90.19	268.73	6,954.0	339.7	-5,109.6	0.00	0.00	0.00	0.00	Boreline Vertex 752'F
12,309.8	90.26	268.36	6,953.9	339.2	-5,128.2	2.00	0.37	-1.97	-79.44	
14,969.3	90.26	268.36	6,942.0	263.2	-7,786.6	0.00	0.00	0.00	0.00	Boreline Vertex 748'F
15,048.1	90.47	266.80	6,941.5	259.9	-7,865.3	2.00	0.27	-1.98	-82.21	
17,666.7	90.47	266.80	6,920.0	113.7	-10,479.8	0.00	0.00	0.00	0.00	BHL 741'FSL, 470'FW

Database:	US_EDM	Local Co-ordinate Reference:	Well Ward U-20-19HN
Company:	Bayswater Exploration & Production, LLC	TVD Reference:	WELL @ 4750.0ft (RKB - 23')
Project:	SEC.20-T6N-R66W	MD Reference:	WELL @ 4750.0ft (RKB - 23')
Site:	Ward 20-M Pad Sec. 20-T6N-R66W	North Reference:	True
Well:	Ward U-20-19HN	Survey Calculation Method:	Minimum Curvature
Wellbore:	Wellbore #1		
Design:	Plan #2 (6-14-16)		

Planned Survey									
Measured Depth (ft)	Inclination (°)	Azimuth (°)	Vertical Depth (ft)	+N/-S (ft)	+E/-W (ft)	Vertical Section (ft)	Dogleg Rate (°/100usft)	Build Rate (°/100usft)	Turn Rate (°/100usft)
0.0	0.00	0.00	0.0	0.0	0.0	0.0	0.00	0.00	0.00
100.0	0.00	0.00	100.0	0.0	0.0	0.0	0.00	0.00	0.00
200.0	0.00	0.00	200.0	0.0	0.0	0.0	0.00	0.00	0.00
300.0	0.00	0.00	300.0	0.0	0.0	0.0	0.00	0.00	0.00
400.0	0.00	0.00	400.0	0.0	0.0	0.0	0.00	0.00	0.00
500.0	0.00	0.00	500.0	0.0	0.0	0.0	0.00	0.00	0.00
600.0	0.00	0.00	600.0	0.0	0.0	0.0	0.00	0.00	0.00
700.0	0.00	0.00	700.0	0.0	0.0	0.0	0.00	0.00	0.00
800.0	0.00	0.00	800.0	0.0	0.0	0.0	0.00	0.00	0.00
900.0	0.00	0.00	900.0	0.0	0.0	0.0	0.00	0.00	0.00
1,000.0	0.00	0.00	1,000.0	0.0	0.0	0.0	0.00	0.00	0.00
1,100.0	0.00	0.00	1,100.0	0.0	0.0	0.0	0.00	0.00	0.00
1,200.0	0.00	0.00	1,200.0	0.0	0.0	0.0	0.00	0.00	0.00
1,300.0	0.00	0.00	1,300.0	0.0	0.0	0.0	0.00	0.00	0.00
1,400.0	0.00	0.00	1,400.0	0.0	0.0	0.0	0.00	0.00	0.00
1,500.0	0.00	0.00	1,500.0	0.0	0.0	0.0	0.00	0.00	0.00
1,600.0	0.00	0.00	1,600.0	0.0	0.0	0.0	0.00	0.00	0.00
1,700.0	0.00	0.00	1,700.0	0.0	0.0	0.0	0.00	0.00	0.00
1,800.0	0.00	0.00	1,800.0	0.0	0.0	0.0	0.00	0.00	0.00
KOP - Start Build 1.50									
1,900.0	1.50	44.35	1,900.0	0.9	0.9	-0.9	1.50	1.50	0.00
2,000.0	3.00	44.35	1,999.9	3.7	3.7	-3.6	1.50	1.50	0.00
2,100.0	4.50	44.35	2,099.7	8.4	8.2	-8.1	1.50	1.50	0.00
2,200.0	6.00	44.35	2,199.3	15.0	14.6	-14.5	1.50	1.50	0.00
2,300.0	7.50	44.35	2,298.6	23.4	22.8	-22.6	1.50	1.50	0.00
2,400.0	9.00	44.35	2,397.5	33.6	32.9	-32.5	1.50	1.50	0.00
2,493.1	10.40	44.35	2,489.3	44.8	43.8	-43.3	1.50	1.50	0.00
2,500.0	10.40	44.35	2,496.1	45.7	44.7	-44.2	0.00	0.00	0.00
2,600.0	10.40	44.35	2,594.4	58.6	57.3	-56.7	0.00	0.00	0.00
2,700.0	10.40	44.35	2,692.8	71.5	69.9	-69.2	0.00	0.00	0.00
2,800.0	10.40	44.35	2,791.2	84.4	82.6	-81.6	0.00	0.00	0.00
2,900.0	10.40	44.35	2,889.5	97.3	95.2	-94.1	0.00	0.00	0.00
3,000.0	10.40	44.35	2,987.9	110.2	107.8	-106.6	0.00	0.00	0.00
3,100.0	10.40	44.35	3,086.2	123.1	120.4	-119.1	0.00	0.00	0.00
3,200.0	10.40	44.35	3,184.6	136.1	133.0	-131.5	0.00	0.00	0.00
3,300.0	10.40	44.35	3,283.0	149.0	145.6	-144.0	0.00	0.00	0.00
3,400.0	10.40	44.35	3,381.3	161.9	158.3	-156.5	0.00	0.00	0.00
3,500.0	10.40	44.35	3,479.7	174.8	170.9	-169.0	0.00	0.00	0.00
3,600.0	10.40	44.35	3,578.0	187.7	183.5	-181.4	0.00	0.00	0.00
3,700.0	10.40	44.35	3,676.4	200.6	196.1	-193.9	0.00	0.00	0.00
3,800.0	10.40	44.35	3,774.7	213.5	208.7	-206.4	0.00	0.00	0.00
3,900.0	10.40	44.35	3,873.1	226.4	221.3	-218.9	0.00	0.00	0.00
4,000.0	10.40	44.35	3,971.5	239.3	233.9	-231.3	0.00	0.00	0.00
4,100.0	10.40	44.35	4,069.8	252.2	246.6	-243.8	0.00	0.00	0.00
4,200.0	10.40	44.35	4,168.2	265.1	259.2	-256.3	0.00	0.00	0.00
4,300.0	10.40	44.35	4,266.5	278.0	271.8	-268.8	0.00	0.00	0.00
4,400.0	10.40	44.35	4,364.9	290.9	284.4	-281.2	0.00	0.00	0.00
4,500.0	10.40	44.35	4,463.3	303.8	297.0	-293.7	0.00	0.00	0.00
4,600.0	10.40	44.35	4,561.6	316.7	309.6	-306.2	0.00	0.00	0.00
4,700.0	10.40	44.35	4,660.0	329.6	322.3	-318.7	0.00	0.00	0.00
4,800.0	10.40	44.35	4,758.3	342.5	334.9	-331.1	0.00	0.00	0.00
4,900.0	10.40	44.35	4,856.7	355.4	347.5	-343.6	0.00	0.00	0.00
5,000.0	10.40	44.35	4,955.0	368.3	360.1	-356.1	0.00	0.00	0.00
5,100.0	10.40	44.35	5,053.4	381.2	372.7	-368.6	0.00	0.00	0.00

Database:	US_EDM	Local Co-ordinate Reference:	Well Ward U-20-19HN
Company:	Bayswater Exploration & Production, LLC	TVD Reference:	WELL @ 4750.0ft (RKB - 23')
Project:	SEC.20-T6N-R66W	MD Reference:	WELL @ 4750.0ft (RKB - 23')
Site:	Ward 20-M Pad Sec. 20-T6N-R66W	North Reference:	True
Well:	Ward U-20-19HN	Survey Calculation Method:	Minimum Curvature
Wellbore:	Wellbore #1		
Design:	Plan #2 (6-14-16)		

Planned Survey									
Measured Depth (ft)	Inclination (°)	Azimuth (°)	Vertical Depth (ft)	+N/-S (ft)	+E/-W (ft)	Vertical Section (ft)	Dogleg Rate (°/100usft)	Build Rate (°/100usft)	Turn Rate (°/100usft)
5,200.0	10.40	44.35	5,151.8	394.1	385.3	-381.0	0.00	0.00	0.00
5,300.0	10.40	44.35	5,250.1	407.0	397.9	-393.5	0.00	0.00	0.00
5,400.0	10.40	44.35	5,348.5	419.9	410.6	-406.0	0.00	0.00	0.00
5,500.0	10.40	44.35	5,446.8	432.8	423.2	-418.5	0.00	0.00	0.00
5,536.8	10.40	44.35	5,483.0	437.6	427.8	-423.0	0.00	0.00	0.00
Start Drop -2.00									
5,600.0	9.13	44.35	5,545.3	445.2	435.3	-430.5	2.00	-2.00	0.00
5,700.0	7.13	44.35	5,644.3	455.3	445.2	-440.2	2.00	-2.00	0.00
5,800.0	5.13	44.35	5,743.7	463.0	452.7	-447.6	2.00	-2.00	0.00
5,900.0	3.13	44.35	5,843.5	468.1	457.7	-452.6	2.00	-2.00	0.00
6,000.0	1.13	44.35	5,943.4	470.8	460.3	-455.2	2.00	-2.00	0.00
6,056.6	0.00	0.00	6,000.0	471.2	460.7	-455.6	2.00	-2.00	0.00
6,100.0	0.00	0.00	6,043.4	471.2	460.7	-455.6	0.00	0.00	0.00
6,200.0	0.00	0.00	6,143.4	471.2	460.7	-455.6	0.00	0.00	0.00
6,300.0	0.00	0.00	6,243.4	471.2	460.7	-455.6	0.00	0.00	0.00
6,310.6	0.00	0.00	6,253.9	471.2	460.7	-455.6	0.00	0.00	0.00
6,400.0	7.16	268.13	6,343.2	471.0	455.1	-450.0	8.00	8.00	0.00
6,500.0	15.16	268.13	6,441.2	470.4	435.8	-430.7	8.00	8.00	0.00
6,600.0	23.16	268.13	6,535.6	469.3	403.0	-397.9	8.00	8.00	0.00
6,700.0	31.16	268.13	6,624.5	467.8	357.4	-352.3	8.00	8.00	0.00
6,800.0	39.16	268.13	6,706.2	465.9	299.9	-294.9	8.00	8.00	0.00
6,900.0	47.16	268.13	6,779.0	463.7	231.6	-226.6	8.00	8.00	0.00
7,000.0	55.17	268.13	6,841.7	461.2	153.8	-148.8	8.00	8.00	0.00
7,100.0	63.17	268.13	6,892.9	458.4	68.1	-63.1	8.00	8.00	0.00
7,200.0	71.17	268.13	6,931.7	455.4	-24.0	28.9	8.00	8.00	0.00
7,300.0	79.17	268.13	6,957.3	452.2	-120.5	125.4	8.00	8.00	0.00
7,400.0	87.17	268.13	6,969.1	449.0	-219.7	224.5	8.00	8.00	0.00
7,437.7	90.19	268.13	6,970.0	447.7	-257.3	262.2	8.00	8.00	0.00
Start DLS 2.00 TFO 90.11									
7,467.6	90.19	268.73	6,969.9	446.9	-287.2	292.0	2.00	0.00	2.00
7,500.0	90.19	268.73	6,969.8	446.2	-319.6	324.4	0.00	0.00	0.00
7,600.0	90.19	268.73	6,969.5	444.0	-419.6	424.4	0.00	0.00	0.00
7,700.0	90.19	268.73	6,969.1	441.8	-519.6	524.3	0.00	0.00	0.00
7,800.0	90.19	268.73	6,968.8	439.5	-619.5	624.3	0.00	0.00	0.00
7,900.0	90.19	268.73	6,968.5	437.3	-719.5	724.2	0.00	0.00	0.00
8,000.0	90.19	268.73	6,968.1	435.1	-819.5	824.2	0.00	0.00	0.00
8,100.0	90.19	268.73	6,967.8	432.9	-919.5	924.1	0.00	0.00	0.00
8,200.0	90.19	268.73	6,967.5	430.6	-1,019.4	1,024.0	0.00	0.00	0.00
8,300.0	90.19	268.73	6,967.2	428.4	-1,119.4	1,124.0	0.00	0.00	0.00
8,400.0	90.19	268.73	6,966.8	426.2	-1,219.4	1,223.9	0.00	0.00	0.00
8,500.0	90.19	268.73	6,966.5	424.0	-1,319.4	1,323.9	0.00	0.00	0.00
8,600.0	90.19	268.73	6,966.2	421.8	-1,419.3	1,423.8	0.00	0.00	0.00
8,700.0	90.19	268.73	6,965.8	419.5	-1,519.3	1,523.8	0.00	0.00	0.00
8,800.0	90.19	268.73	6,965.5	417.3	-1,619.3	1,623.7	0.00	0.00	0.00
8,900.0	90.19	268.73	6,965.2	415.1	-1,719.3	1,723.7	0.00	0.00	0.00
9,000.0	90.19	268.73	6,964.8	412.9	-1,819.2	1,823.6	0.00	0.00	0.00
9,100.0	90.19	268.73	6,964.5	410.6	-1,919.2	1,923.6	0.00	0.00	0.00
9,200.0	90.19	268.73	6,964.2	408.4	-2,019.2	2,023.5	0.00	0.00	0.00
9,300.0	90.19	268.73	6,963.9	406.2	-2,119.2	2,123.4	0.00	0.00	0.00
9,400.0	90.19	268.73	6,963.5	404.0	-2,219.1	2,223.4	0.00	0.00	0.00
9,500.0	90.19	268.73	6,963.2	401.8	-2,319.1	2,323.3	0.00	0.00	0.00
9,600.0	90.19	268.73	6,962.9	399.5	-2,419.1	2,423.3	0.00	0.00	0.00
9,700.0	90.19	268.73	6,962.5	397.3	-2,519.1	2,523.2	0.00	0.00	0.00
9,800.0	90.19	268.73	6,962.2	395.1	-2,619.0	2,623.2	0.00	0.00	0.00

Database:	US_EDM	Local Co-ordinate Reference:	Well Ward U-20-19HN
Company:	Bayswater Exploration & Production, LLC	TVD Reference:	WELL @ 4750.0ft (RKB - 23')
Project:	SEC.20-T6N-R66W	MD Reference:	WELL @ 4750.0ft (RKB - 23')
Site:	Ward 20-M Pad Sec. 20-T6N-R66W	North Reference:	True
Well:	Ward U-20-19HN	Survey Calculation Method:	Minimum Curvature
Wellbore:	Wellbore #1		
Design:	Plan #2 (6-14-16)		

Planned Survey									
Measured Depth (ft)	Inclination (°)	Azimuth (°)	Vertical Depth (ft)	+N/-S (ft)	+E/-W (ft)	Vertical Section (ft)	Dogleg Rate (°/100usft)	Build Rate (°/100usft)	Turn Rate (°/100usft)
9,900.0	90.19	268.73	6,961.9	392.9	-2,719.0	2,723.1	0.00	0.00	0.00
10,000.0	90.19	268.73	6,961.6	390.6	-2,819.0	2,823.1	0.00	0.00	0.00
10,100.0	90.19	268.73	6,961.2	388.4	-2,919.0	2,923.0	0.00	0.00	0.00
10,200.0	90.19	268.73	6,960.9	386.2	-3,018.9	3,022.9	0.00	0.00	0.00
10,300.0	90.19	268.73	6,960.6	384.0	-3,118.9	3,122.9	0.00	0.00	0.00
10,400.0	90.19	268.73	6,960.2	381.8	-3,218.9	3,222.8	0.00	0.00	0.00
10,500.0	90.19	268.73	6,959.9	379.5	-3,318.9	3,322.8	0.00	0.00	0.00
10,600.0	90.19	268.73	6,959.6	377.3	-3,418.8	3,422.7	0.00	0.00	0.00
10,700.0	90.19	268.73	6,959.2	375.1	-3,518.8	3,522.7	0.00	0.00	0.00
10,800.0	90.19	268.73	6,958.9	372.9	-3,618.8	3,622.6	0.00	0.00	0.00
10,900.0	90.19	268.73	6,958.6	370.6	-3,718.8	3,722.6	0.00	0.00	0.00
11,000.0	90.19	268.73	6,958.3	368.4	-3,818.7	3,822.5	0.00	0.00	0.00
11,100.0	90.19	268.73	6,957.9	366.2	-3,918.7	3,922.4	0.00	0.00	0.00
11,200.0	90.19	268.73	6,957.6	364.0	-4,018.7	4,022.4	0.00	0.00	0.00
11,300.0	90.19	268.73	6,957.3	361.7	-4,118.7	4,122.3	0.00	0.00	0.00
11,400.0	90.19	268.73	6,956.9	359.5	-4,218.6	4,222.3	0.00	0.00	0.00
11,500.0	90.19	268.73	6,956.6	357.3	-4,318.6	4,322.2	0.00	0.00	0.00
11,600.0	90.19	268.73	6,956.3	355.1	-4,418.6	4,422.2	0.00	0.00	0.00
11,700.0	90.19	268.73	6,955.9	352.9	-4,518.6	4,522.1	0.00	0.00	0.00
11,800.0	90.19	268.73	6,955.6	350.6	-4,618.5	4,622.1	0.00	0.00	0.00
11,900.0	90.19	268.73	6,955.3	348.4	-4,718.5	4,722.0	0.00	0.00	0.00
12,000.0	90.19	268.73	6,955.0	346.2	-4,818.5	4,821.9	0.00	0.00	0.00
12,100.0	90.19	268.73	6,954.6	344.0	-4,918.5	4,921.9	0.00	0.00	0.00
12,200.0	90.19	268.73	6,954.3	341.7	-5,018.4	5,021.8	0.00	0.00	0.00
12,291.2	90.19	268.73	6,954.0	339.7	-5,109.6	5,113.0	0.00	0.00	0.00
Start DLS 2.00 TFO -79.44									
12,300.0	90.22	268.55	6,954.0	339.5	-5,118.4	5,121.8	2.00	0.37	-1.96
12,309.8	90.26	268.36	6,953.9	339.2	-5,128.2	5,131.6	2.00	0.37	-1.97
12,400.0	90.26	268.36	6,953.5	336.7	-5,218.4	5,221.7	0.00	0.00	0.00
12,500.0	90.26	268.36	6,953.1	333.8	-5,318.3	5,321.6	0.00	0.00	0.00
12,600.0	90.26	268.36	6,952.6	330.9	-5,418.3	5,421.5	0.00	0.00	0.00
12,700.0	90.26	268.36	6,952.2	328.1	-5,518.2	5,521.5	0.00	0.00	0.00
12,800.0	90.26	268.36	6,951.7	325.2	-5,618.2	5,621.4	0.00	0.00	0.00
12,900.0	90.26	268.36	6,951.3	322.4	-5,718.2	5,721.3	0.00	0.00	0.00
13,000.0	90.26	268.36	6,950.8	319.5	-5,818.1	5,821.2	0.00	0.00	0.00
13,100.0	90.26	268.36	6,950.4	316.6	-5,918.1	5,921.2	0.00	0.00	0.00
13,200.0	90.26	268.36	6,949.9	313.8	-6,018.0	6,021.1	0.00	0.00	0.00
13,300.0	90.26	268.36	6,949.5	310.9	-6,118.0	6,121.0	0.00	0.00	0.00
13,400.0	90.26	268.36	6,949.0	308.1	-6,217.9	6,220.9	0.00	0.00	0.00
13,500.0	90.26	268.36	6,948.6	305.2	-6,317.9	6,320.8	0.00	0.00	0.00
13,600.0	90.26	268.36	6,948.1	302.3	-6,417.9	6,420.8	0.00	0.00	0.00
13,700.0	90.26	268.36	6,947.7	299.5	-6,517.8	6,520.7	0.00	0.00	0.00
13,800.0	90.26	268.36	6,947.2	296.6	-6,617.8	6,620.6	0.00	0.00	0.00
13,900.0	90.26	268.36	6,946.8	293.8	-6,717.7	6,720.5	0.00	0.00	0.00
14,000.0	90.26	268.36	6,946.3	290.9	-6,817.7	6,820.4	0.00	0.00	0.00
14,100.0	90.26	268.36	6,945.9	288.0	-6,917.6	6,920.4	0.00	0.00	0.00
14,200.0	90.26	268.36	6,945.5	285.2	-7,017.6	7,020.3	0.00	0.00	0.00
14,300.0	90.26	268.36	6,945.0	282.3	-7,117.6	7,120.2	0.00	0.00	0.00
14,400.0	90.26	268.36	6,944.6	279.5	-7,217.5	7,220.1	0.00	0.00	0.00
14,500.0	90.26	268.36	6,944.1	276.6	-7,317.5	7,320.1	0.00	0.00	0.00
14,600.0	90.26	268.36	6,943.7	273.7	-7,417.4	7,420.0	0.00	0.00	0.00
14,700.0	90.26	268.36	6,943.2	270.9	-7,517.4	7,519.9	0.00	0.00	0.00
14,800.0	90.26	268.36	6,942.8	268.0	-7,617.4	7,619.8	0.00	0.00	0.00

<b>Database:</b>	US_EDM	<b>Local Co-ordinate Reference:</b>	Well Ward U-20-19HN
<b>Company:</b>	Bayswater Exploration & Production, LLC	<b>TVD Reference:</b>	WELL @ 4750.0ft (RKB - 23')
<b>Project:</b>	SEC.20-T6N-R66W	<b>MD Reference:</b>	WELL @ 4750.0ft (RKB - 23')
<b>Site:</b>	Ward 20-M Pad Sec. 20-T6N-R66W	<b>North Reference:</b>	True
<b>Well:</b>	Ward U-20-19HN	<b>Survey Calculation Method:</b>	Minimum Curvature
<b>Wellbore:</b>	Wellbore #1		
<b>Design:</b>	Plan #2 (6-14-16)		

Planned Survey									
Measured Depth (ft)	Inclination (°)	Azimuth (°)	Vertical Depth (ft)	+N/-S (ft)	+E/-W (ft)	Vertical Section (ft)	Dogleg Rate (°/100usft)	Build Rate (°/100usft)	Turn Rate (°/100usft)
14,900.0	90.26	268.36	6,942.3	265.2	-7,717.3	7,719.7	0.00	0.00	0.00
14,969.3	90.26	268.36	6,942.0	263.2	-7,786.6	7,789.0	0.00	0.00	0.00
Start DLS 2.00 TFO -82.21									
15,000.0	90.34	267.75	6,941.8	262.1	-7,817.3	7,819.6	2.00	0.27	-1.98
15,048.1	90.47	266.80	6,941.5	259.9	-7,865.3	7,867.6	2.00	0.27	-1.98
15,100.0	90.47	266.80	6,941.1	257.0	-7,917.1	7,919.4	0.00	0.00	0.00
15,200.0	90.47	266.80	6,940.3	251.4	-8,017.0	8,019.2	0.00	0.00	0.00
15,300.0	90.47	266.80	6,939.4	245.8	-8,116.8	8,119.0	0.00	0.00	0.00
15,400.0	90.47	266.80	6,938.6	240.2	-8,216.6	8,218.8	0.00	0.00	0.00
15,500.0	90.47	266.80	6,937.8	234.6	-8,316.5	8,318.5	0.00	0.00	0.00
15,600.0	90.47	266.80	6,937.0	229.1	-8,416.3	8,418.3	0.00	0.00	0.00
15,700.0	90.47	266.80	6,936.1	223.5	-8,516.2	8,518.1	0.00	0.00	0.00
15,800.0	90.47	266.80	6,935.3	217.9	-8,616.0	8,617.9	0.00	0.00	0.00
15,900.0	90.47	266.80	6,934.5	212.3	-8,715.9	8,717.6	0.00	0.00	0.00
16,000.0	90.47	266.80	6,933.7	206.7	-8,815.7	8,817.4	0.00	0.00	0.00
16,100.0	90.47	266.80	6,932.9	201.2	-8,915.5	8,917.2	0.00	0.00	0.00
16,200.0	90.47	266.80	6,932.0	195.6	-9,015.4	9,017.0	0.00	0.00	0.00
16,300.0	90.47	266.80	6,931.2	190.0	-9,115.2	9,116.7	0.00	0.00	0.00
16,400.0	90.47	266.80	6,930.4	184.4	-9,215.1	9,216.5	0.00	0.00	0.00
16,500.0	90.47	266.80	6,929.6	178.8	-9,314.9	9,316.3	0.00	0.00	0.00
16,600.0	90.47	266.80	6,928.8	173.2	-9,414.7	9,416.1	0.00	0.00	0.00
16,700.0	90.47	266.80	6,927.9	167.7	-9,514.6	9,515.8	0.00	0.00	0.00
16,800.0	90.47	266.80	6,927.1	162.1	-9,614.4	9,615.6	0.00	0.00	0.00
16,900.0	90.47	266.80	6,926.3	156.5	-9,714.3	9,715.4	0.00	0.00	0.00
17,000.0	90.47	266.80	6,925.5	150.9	-9,814.1	9,815.2	0.00	0.00	0.00
17,100.0	90.47	266.80	6,924.7	145.3	-9,913.9	9,914.9	0.00	0.00	0.00
17,200.0	90.47	266.80	6,923.8	139.8	-10,013.8	10,014.7	0.00	0.00	0.00
17,300.0	90.47	266.80	6,923.0	134.2	-10,113.6	10,114.5	0.00	0.00	0.00
17,400.0	90.47	266.80	6,922.2	128.6	-10,213.5	10,214.3	0.00	0.00	0.00
17,500.0	90.47	266.80	6,921.4	123.0	-10,313.3	10,314.0	0.00	0.00	0.00
17,600.0	90.47	266.80	6,920.5	117.4	-10,413.1	10,413.8	0.00	0.00	0.00
17,666.7	90.47	266.80	6,920.0	113.7	-10,479.7	10,480.4	0.00	0.00	0.00
TD at 17666.7									



<b>Database:</b>	US_EDM	<b>Local Co-ordinate Reference:</b>	Well Ward U-20-19HN
<b>Company:</b>	Bayswater Exploration & Production, LLC	<b>TVD Reference:</b>	WELL @ 4750.0ft (RKB - 23')
<b>Project:</b>	SEC.20-T6N-R66W	<b>MD Reference:</b>	WELL @ 4750.0ft (RKB - 23')
<b>Site:</b>	Ward 20-M Pad Sec. 20-T6N-R66W	<b>North Reference:</b>	True
<b>Well:</b>	Ward U-20-19HN	<b>Survey Calculation Method:</b>	Minimum Curvature
<b>Wellbore:</b>	Wellbore #1		
<b>Design:</b>	Plan #2 (6-14-16)		

Design Targets									
Target Name - hit/miss target - Shape	Dip Angle (°)	Dip Dir. (°)	TVD (ft)	+N/-S (ft)	+E/-W (ft)	Northing (usft)	Easting (usft)	Latitude	Longitude
SHL 304'FSL, 213'FEL, : - plan hits target center - Point	0.00	0.00	1.0	0.0	0.0	1,413,837.19	3,196,666.06	40.467233	-104.793156
BHL 741'FSL, 470'FWL, - plan hits target center - Point	0.00	0.00	6,920.0	113.7	-10,479.8	1,413,867.35	3,186,186.12	40.467539	-104.830820
Boreline Vertex 748'FSL - plan hits target center - Point	0.00	0.00	6,942.0	263.2	-7,786.6	1,414,038.28	3,188,877.91	40.467952	-104.821141
Boreline Vertex 752'FSL - plan hits target center - Point	0.00	0.00	6,954.0	339.7	-5,109.6	1,414,136.14	3,191,554.09	40.468164	-104.811520
LPL 755'FSL, 470'FEL, : - plan hits target center - Point	0.00	0.00	6,970.0	447.7	-257.4	1,414,282.84	3,196,405.13	40.468462	-104.794081

Casing Points					
Measured Depth (ft)	Vertical Depth (ft)	Name		Casing Diameter (")	Hole Diameter (")
7,437.7	6,970.0	7"		7	8-3/4

Plan Annotations				
Measured Depth (ft)	Vertical Depth (ft)	Local Coordinates		Comment
		+N/-S (ft)	+E/-W (ft)	
1,800.0	1,800.0	0.0	0.0	KOP - Start Build 1.50
5,536.8	5,483.0	44.8	43.8	Start Drop -2.00
7,437.7	6,970.0	437.6	427.8	Start DLS 2.00 TFO 90.11
12,291.2	6,954.0	471.2	460.7	Start DLS 2.00 TFO -79.44
14,969.3	6,942.0	471.2	460.7	Start DLS 2.00 TFO -82.21
17,666.7	6,920.0	447.7	-257.4	TD at 17666.7