

### LAND SURVEYOR'S CERTIFICATION

LAMP, RYNEARSON & ASSOCIATES, INC., OF FT. COLLINS, COLORADO HAS, IN ACCORDANCE WITH A REQUEST FROM DUSTIN DYK FROM EXTRACTION OIL AND GAS, DETERMINED THE SURFACE LOCATION OF THE WELL DESIGNATED AS GP-JACKSON 5-17-13 TO BE 550' FROM THE NORTH LINE AND 1305' FROM THE EAST LINE OF SECTION 20, TOWNSHIP 5 NORTH, RANGE 65 WEST OF THE 6TH P.M., WELD COUNTY, COLORADO.



FRANK A. KOHL  
 COLORADO PLS 37067  
 DATE OF SURVEY: 8/19/2010 (SECTION CONTROL)  
 DATE OF SURVEY: 08/23/2013 (WELL LOCATION)

0 1000  
 SCALE: 1"= 1000'  
 U.S. SURVEY FEET

- LEGEND**
- ALIQUOT CORNER A.C. ALUMINUM CAP
  - ⊙ BOTTOM HOLE R.B. RANGE BOX
  - PROPOSED WELL



**LAMP RYNEARSON**  
 & ASSOCIATES

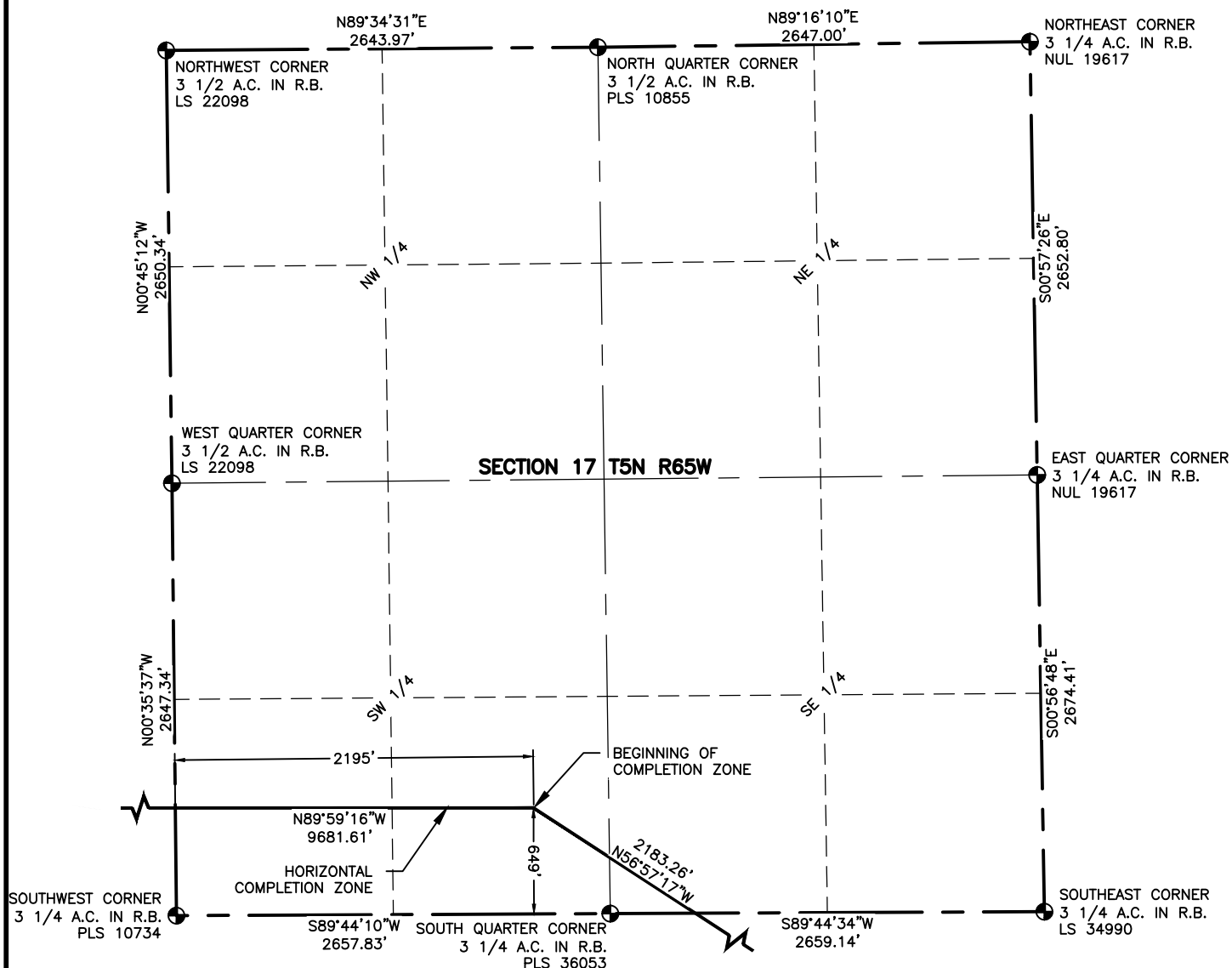
4715 Innovation Drive 970.226.0342 | P  
 Fort Collins, CO 80525 970.226.0879 | F  
 www.LRA-Inc.com

PROPOSED WELL LOCATION EXHIBIT  
 GP-JACKSON 5-17-13  
 1 OF 4

| DRAWN BY | DATE    | COGCC ID | PROJECT - TASK NUMBER | BOOK AND PAGE |
|----------|---------|----------|-----------------------|---------------|
| JMC      | 9/22/16 | 332837   | 0213001.01            | MR01/MR02     |

**SURFACE - LOCATION**  
 NE/4, NE/4, SEC20, T5N, R65W

PATH\FILENAME p:\\_engineering\0213001.01\DRAWINGS\EXHIBITS\WELL PLATS\0213001-01EXWPOG1.dwg



#### NOTES:

DISTANCES ARE MEASURED PERPENDICULAR TO NEAREST SECTION LINE AND ARE SHOWN ON THE SAME SIDE OF THE SECTION LINE WHERE THE WELL IS LOCATED.

THIS MAP DOES NOT REPRESENT A MONUMENTED BOUNDARY SURVEY.

SIXTEENTH CORNER LOCATIONS ARE COMPUTED, UNLESS OTHERWISE NOTED.

#### LEGEND

- ALIQUOT CORNER
- ⊙ BOTTOM HOLE
- A.C. ALUMINUM CAP
- R.B. RANGE BOX



0 1000

SCALE: 1"= 1000'  
U.S. SURVEY FEET



4715 Innovation Drive 970.226.0342 | P  
Fort Collins, CO 80525 970.226.0879 | F  
www.LRA-Inc.com

PROPOSED WELL LOCATION EXHIBIT  
GP-JACKSON 5-17-13  
2 OF 4

**DRAWN BY**  
JMC  
**PATH\FILENAME**

**DATE**  
9/22/16

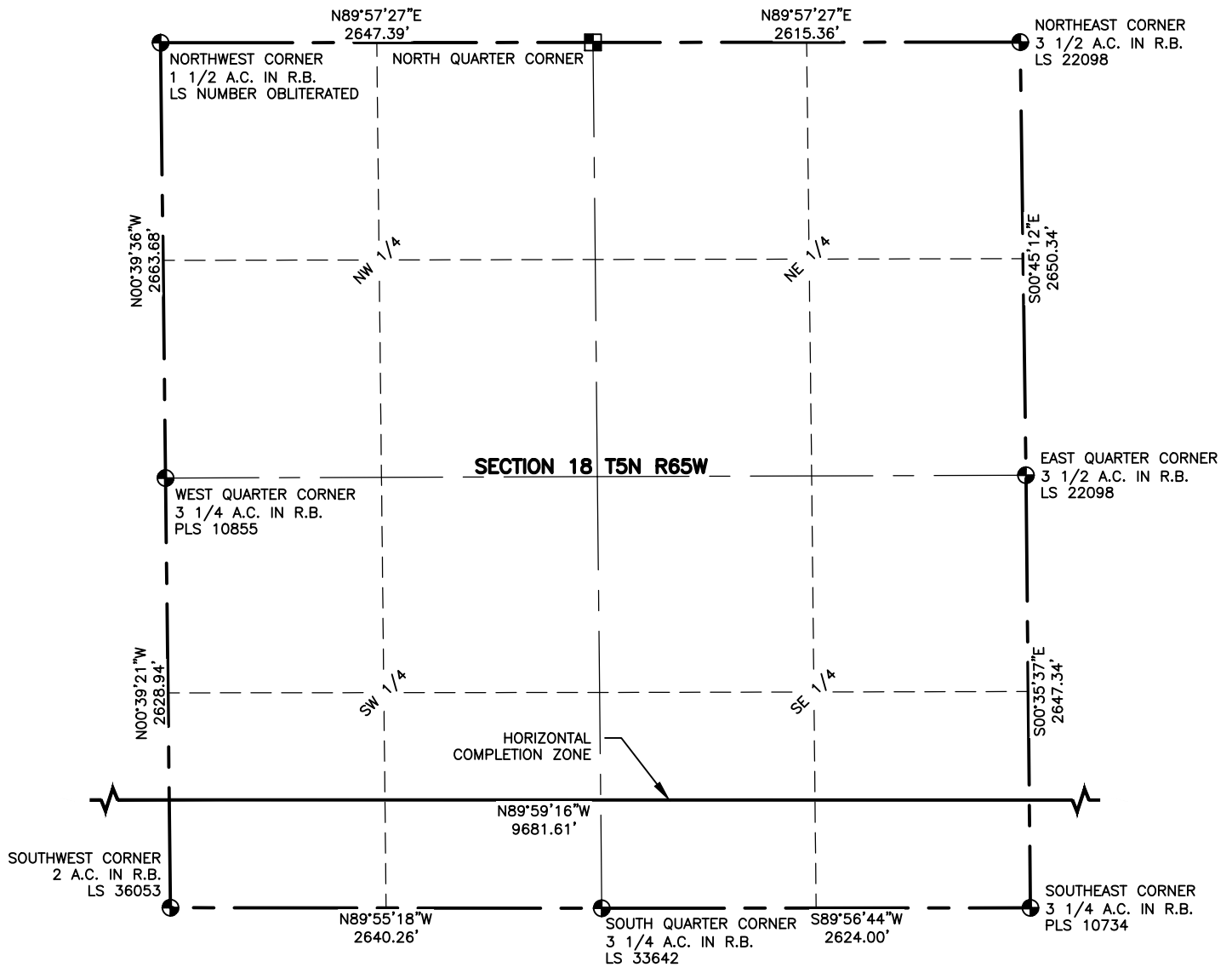
**COGCC ID**  
332837

**PROJECT - TASK NUMBER**  
0213001.01

**BOOK AND PAGE**  
MR01/MR02

**SURFACE - LOCATION**  
NE/4,NE/4, SEC20, T5N, R65W

p:\\_engineering\0213001.01\DRAWINGS\EXHIBITS\WELL PLATS\0213001-01EXWPG2.dwg

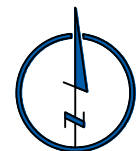


#### NOTES:

- DISTANCES ARE MEASURED PERPENDICULAR TO NEAREST SECTION LINE AND ARE SHOWN ON THE SAME SIDE OF THE SECTION LINE WHERE THE WELL IS LOCATED.
- THIS MAP DOES NOT REPRESENT A MONUMENTED BOUNDARY SURVEY.
- SIXTEENTH CORNER LOCATIONS ARE COMPUTED, UNLESS OTHERWISE NOTED.

#### LEGEND

- ALIQUOT CORNER
- BOTTOM HOLE
- COMPUTED ALIQUOT CORNER FROM GLO RECORDS
- A.C. ALUMINUM CAP
- R.B. RANGE BOX



SCALE: 1"= 1000'  
U.S. SURVEY FEET



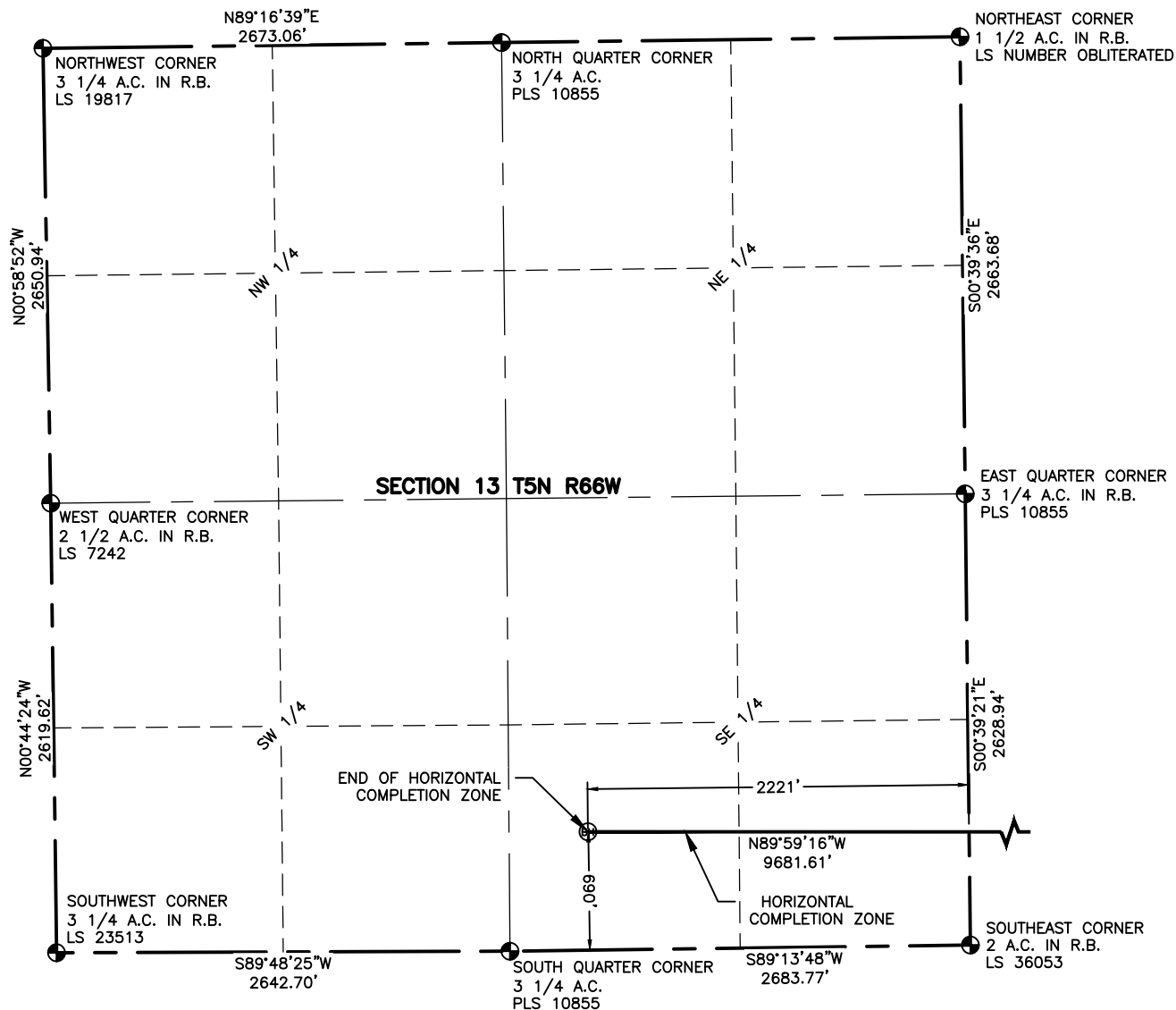
4715 Innovation Drive 970.226.0342 | P  
Fort Collins, CO 80525 970.226.0879 | F  
[www.LRA-Inc.com](http://www.LRA-Inc.com)

PROPOSED WELL LOCATION EXHIBIT  
GP-JACKSON 5-17-13  
3 OF

| DRAWN BY | DATE    | COGCC ID | PROJECT - TASK NUMBER | BOOK AND PAGE |
|----------|---------|----------|-----------------------|---------------|
| JMC      | 9/22/16 | 332837   | 0213001.01            | MR01/MR02     |

**SURFACE - LOCATION**  
NE/4, NE/4, SEC20, T5N, R65W

PATH\FILENAME p:\\_engineering\0213001.01\DRAWINGS\EXHIBITS\WELL PLATS\0213001-01EXWPG3.dwg



#### NOTES:

- DISTANCES ARE MEASURED PERPENDICULAR TO NEAREST SECTION LINE AND ARE SHOWN ON THE SAME SIDE OF THE SECTION LINE WHERE THE WELL IS LOCATED.
- THIS MAP DOES NOT REPRESENT A MONUMENTED BOUNDARY SURVEY. SIXTEENTH CORNER LOCATIONS ARE COMPUTED, UNLESS OTHERWISE NOTED.
- BOTTOM HOLE LOCATIONS AND HORIZONTAL COMPLETION ZONE PROVIDED BY OTHERS.

#### LEGEND

- ALIQUOT CORNER
- BOTTOM HOLE
- A.C. ALUMINUM CAP
- R.B. RANGE BOX



0 1000  
SCALE: 1"= 1000'  
U.S. SURVEY FEET



**LAMP RYNEARSON**  
& ASSOCIATES

4715 Innovation Drive 970.226.0342 | P  
Fort Collins, CO 80525 970.226.0879 | F  
www.LRA-Inc.com

PROPOSED WELL LOCATION EXHIBIT  
GP-JACKSON 5-17-13  
4 OF 4

DRAWN BY  
JMC  
PATH\FILENAME

DATE  
9/22/16

COGCC ID  
332837

PROJECT - TASK NUMBER  
0213001.01

BOOK AND PAGE  
MR01/MR02

SURFACE - LOCATION  
NE/4,NE/4, SEC20, T5N, R65W

p:\\_engineering\0213001.01\DRAWINGS\EXHIBITS\WELL PLATS\0213001-01EXWP0G4.dwg