

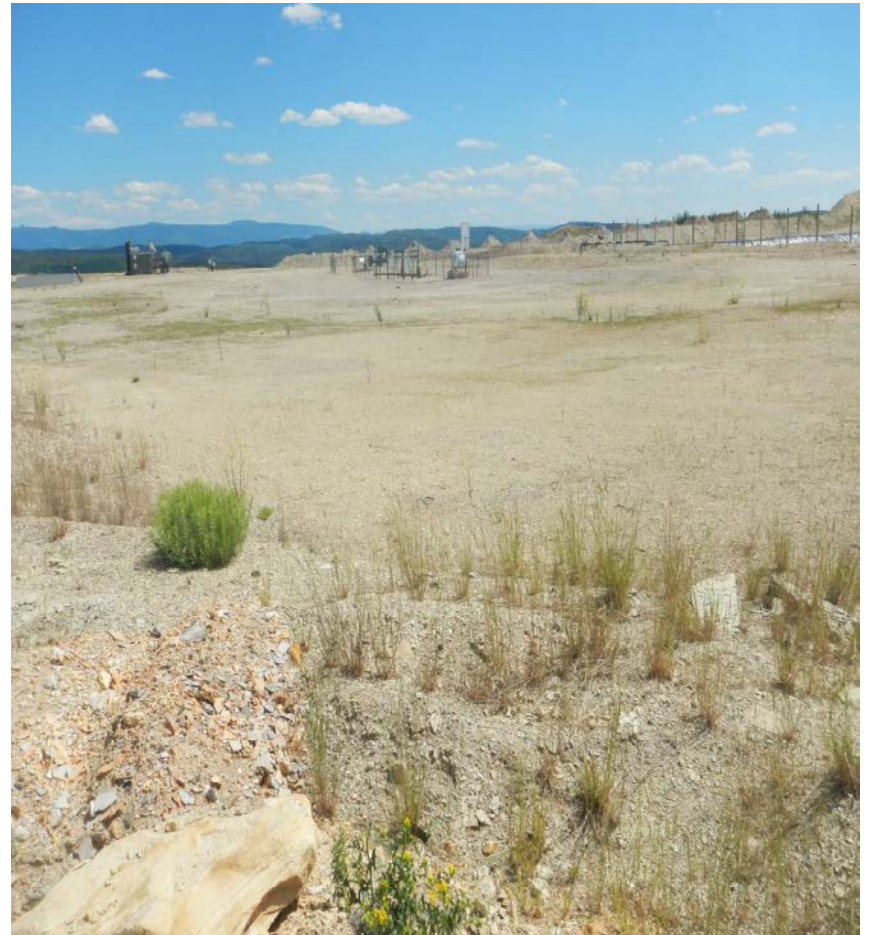


**Photo#1: Location Signs**

**Photo#2: Overview of location from Entry to West**



**Photo#3: Overview of Location to East**





**Photo#4: View of Location disturbance from adjacent Pad to SW**



July 7, 2016

Inspection Photos: LINN Loc#335568

**Photo#5: Aerial View of Location**



July 7, 2016

Inspection Photos: LINN Loc#335568





**Photo#6: Large Thumb of Rocky Material extends SW out of Location. Fill Material / Pit or Land Farm excavation Material? Where From & What?**

July 7, 2016

Inspection Photos: LINN Loc#335568

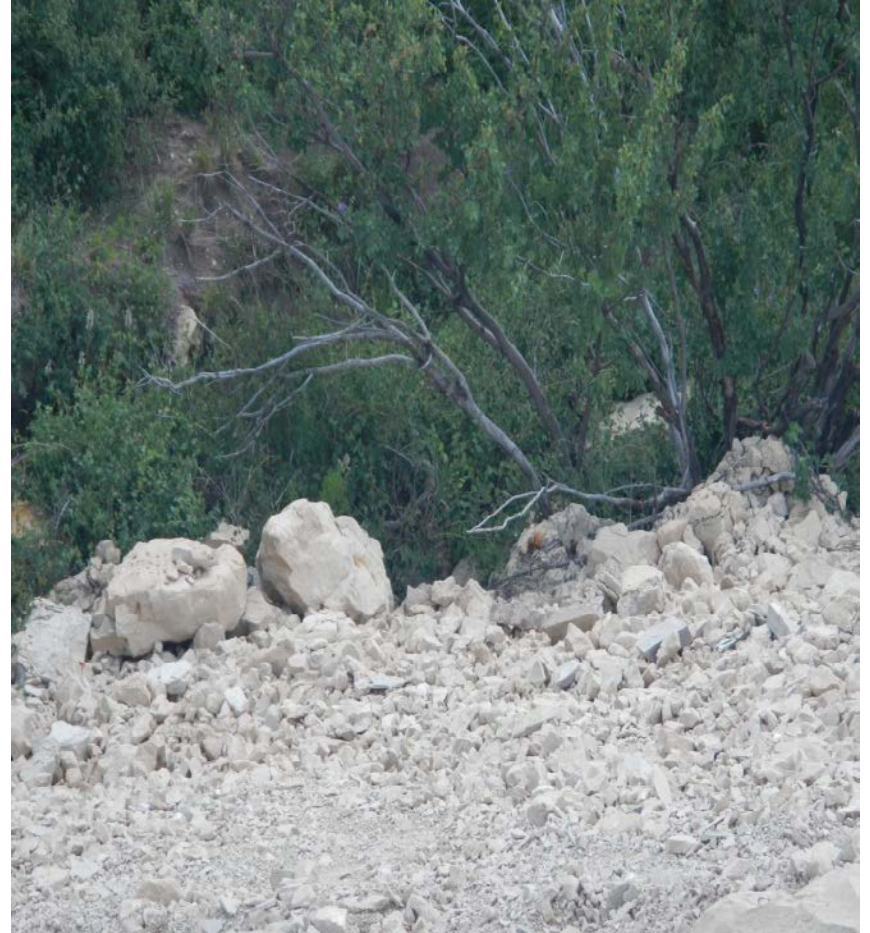


**Photo#7:**

**Rocky, loose Fill Slope Material migrating, rattling down to overwhelm Native vegetation and SW BMPs**



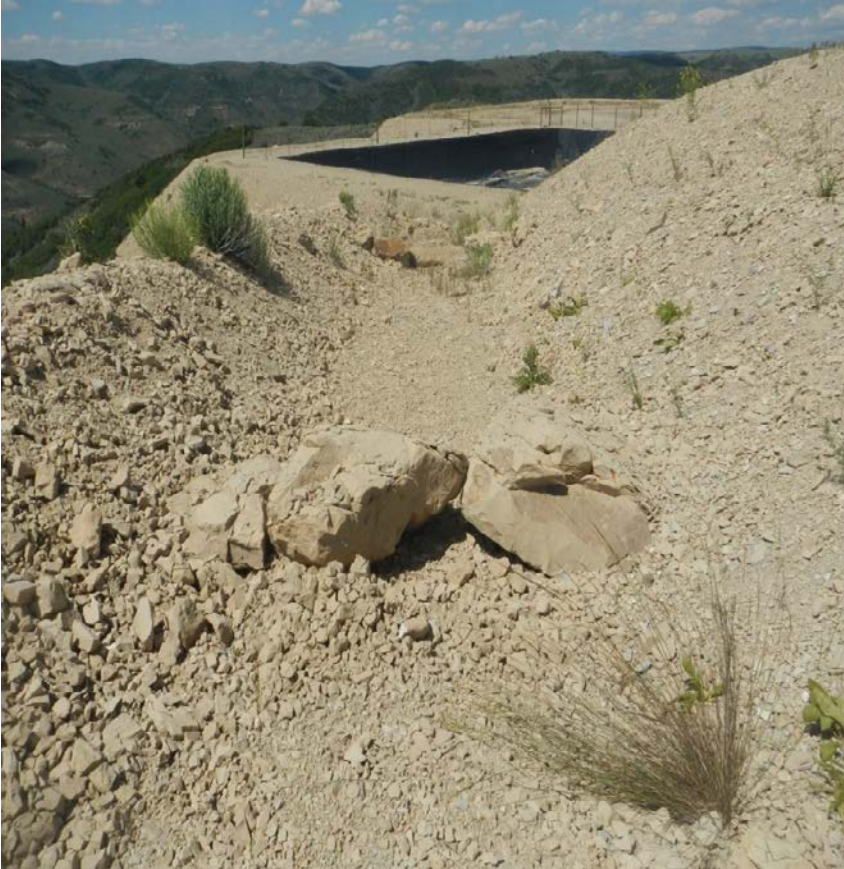
**Photo8:**



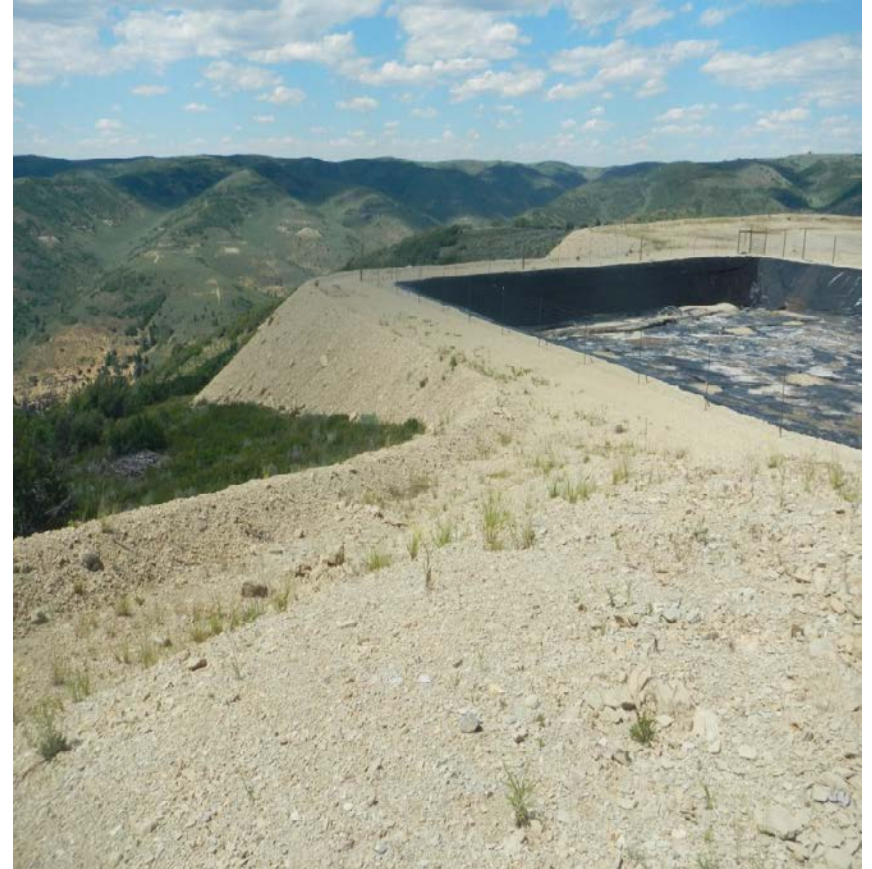


**Photo#9:**

**Berms, Slopes, Ditches are not Stabilized or adequately revegetating.**



**Photo10:**

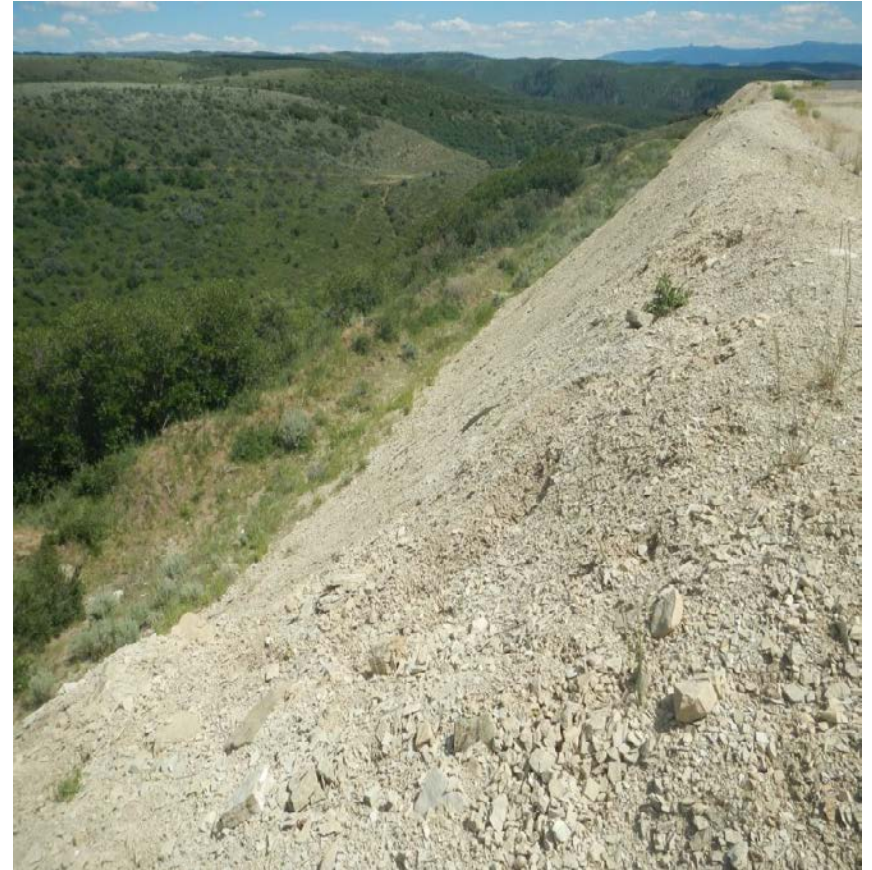




**Photo#11:**

**Berms, Slopes, Benches are not Stabilized or adequately revegetating.**

**Photo12:**

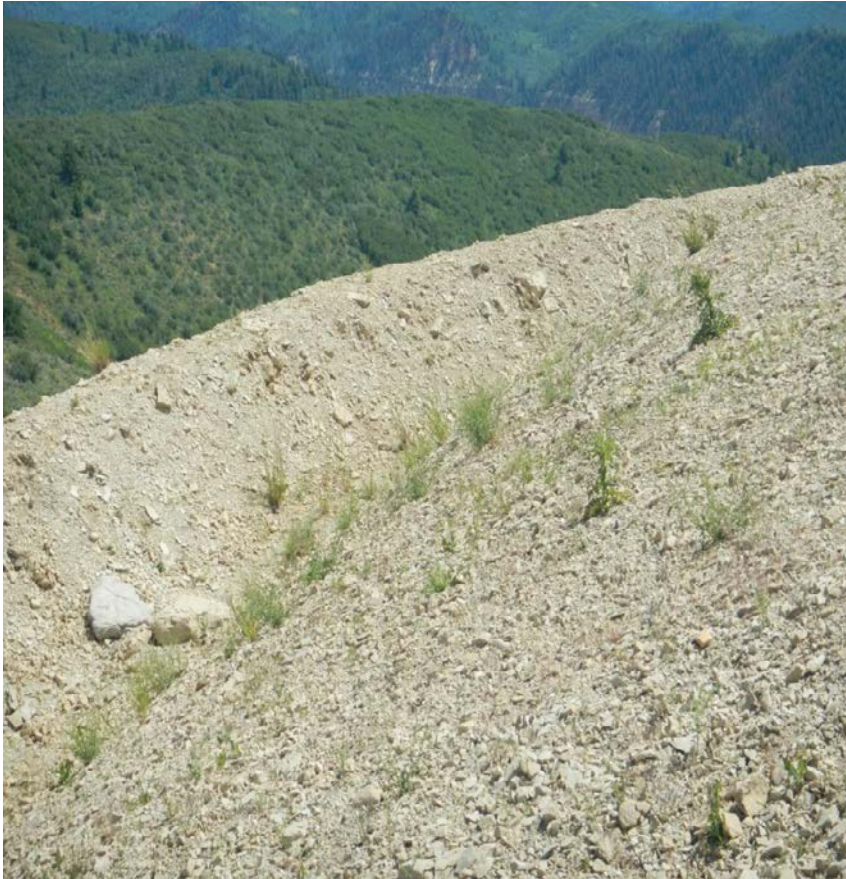




**Photo#13:**

**Photo14:**

**Berm running along top of Thumb; view at point of Thumb at SW end.**





**Photo#15:**

**Photo16:**

**View of Well Corral, 3 PR Wells and Two Conductors Set.**





**Photo#17:**



**Photo18:**

**Views of Pit Located at West side of Location.**





**Photo#19:**



**Photo20:**

**Views of Pit Located at West side of Location.**





**Photo#21:**

**Looking back at Land Farming Site  
as advancing up Thumb**



**Photo22:**

**View SW from outside Berm of Land Farming Site to Thumb.**



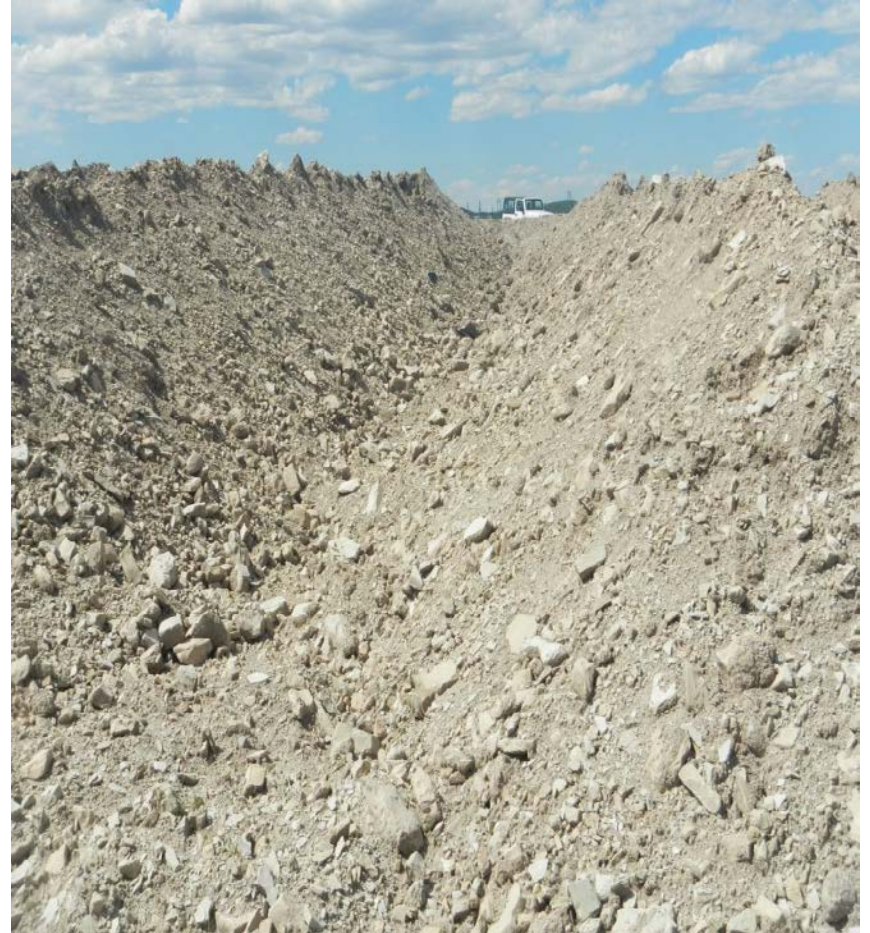


**Photo#23:**



**Photo24:**

**Views of Land Farming Windrows.**





**Photo#25:**

**Bermed Material at North side of Location.**



**Photo26:**

**Unknown Stock piles of Material**

**Material piled adjacent to Land Farming Site.**

