



July 13, 2016

Mr. Matthew Lepore, Director
Colorado Oil & Gas Conservation Commission
1120 Lincoln Street, Ste. 801
Denver, Colorado 80203

RE: Rule 318.A.e.
GP-Hillside 1-17-13
GP-Hillside 2-20-24
GP-Hillside 3-20-24
GP-Hillside C1-20-24

Surface Location: NENE, Section 20, Township 5 North, Range 65 West, Weld County, CO

Dear Mr. Lepore,

Extraction Oil and Gas is planning to drill the captioned horizontal wells in accordance with the provision of COGCC Rule 318A.e.

The proposed wellbore spacing unit consists of:

- Section 13-5N-66W: S/2SE/4
- Section 24-5N-66W: N/2NE/4
- Section 18-5N-65W: S/2S/2
- Section 19-5N-65W: N/2N/2
- Section 17-5N-65W: S/2SW/4
- Section 20-5N-65W: N/2NW/4

The spacing unit is a 640-acre wellbore spacing unit for the Niobrara and Codell formations.

Extraction Oil and Gas hereby certifies to the Director that all Owners within the proposed spacing unit above were notified and 30 days have passed without objection.

If you have any questions or issues regarding this permit, please contact Alyssa Andrews at (720) 481-2379.

Sincerely,

Alyssa Andrews
Regulatory Analyst
Extraction Oil & Gas, LLC

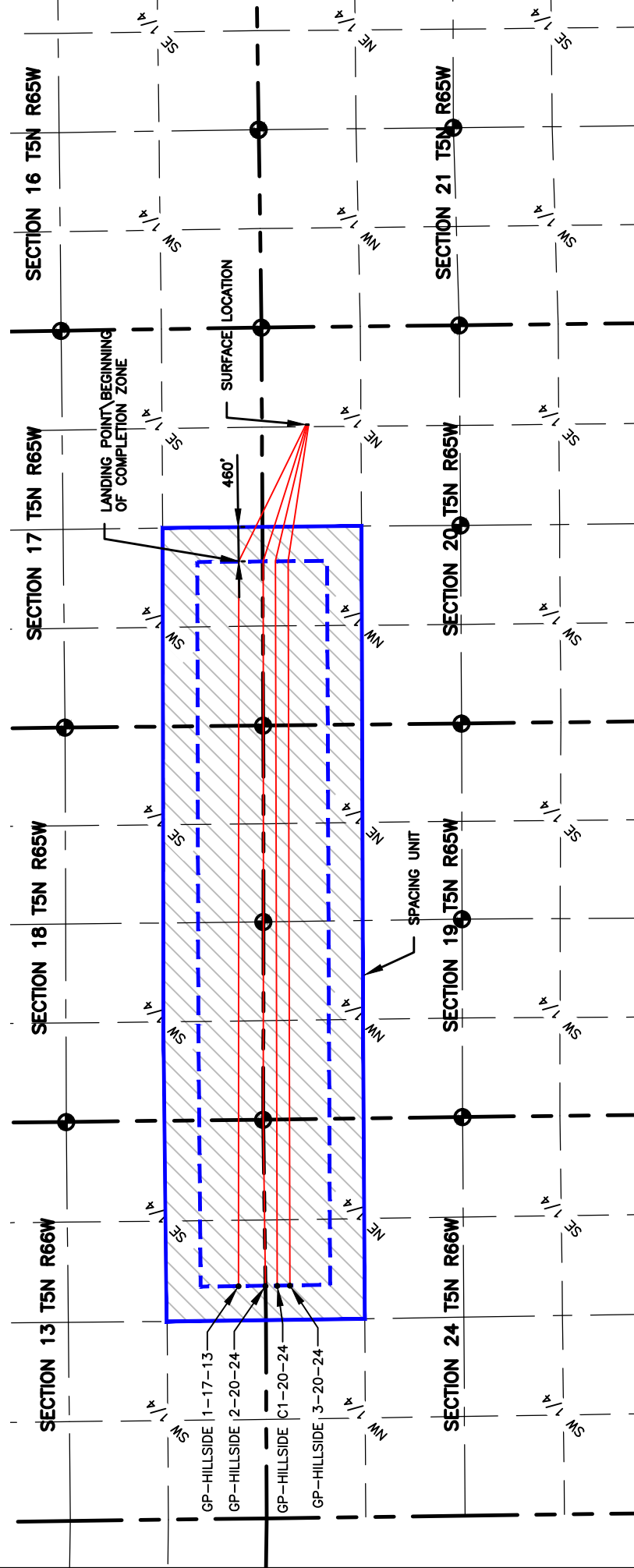
NAME: HILLSIDE

SPACING UNIT: S/2 SE/4 SEC 13, N/2 NE/4 SEC 24, T5N, 66W, S/2 S/2 SEC 18, N/2 N/2 SEC 19, S/2 SW/4 SEC 17, N/2 NW/4 SEC 20, T5N, 65W UNIT ACREAGE: 640



0 2000
SCALE: 1" = 2000'
U.S. SURVEY FEET

WELL NAME	SURFACE LOCATION				LANDING POINT\BEGIN HORIZONTAL COMPLETION ZONE				BOTTOM HOLE\END HORIZONTAL COMPLETION ZONE				COMPLETION ZONE BEARING	COMPLETION ZONE LENGTH
	DIST.	DIR.	DIST.	DIR.	DIST.	DIR.	DIST.	DIR.	DIST.	DIR.	DIST.	DIR.		
GP-HILLSIDE 1-17-13	586'	FNL	1305'	FEL	319'	FSL	2197'	FWL	360'	FSL	2222'	FEL	N89°59'16"W	9683.80'
GP-HILLSIDE 2-20-24	598'	FNL	1305'	FEL	0'	FNL	2198'	FWL	0'	FNL	2224'	FEL	S89°44'10"W S89°56'44"W N89°55'18"W S89°13'48"W	2197.89' 2624.00' 2640.26' 2223.77'
GP-HILLSIDE C1-20-24	610'	FNL	1305'	FEL	173'	FNL	2198'	FWL	158'	FNL	2223'	FEL	S89°51'39"W	9685.47'
GP-HILLSIDE 3-20-24	622'	FNL	1305'	FEL	342'	FNL	2198'	FWL	326'	FNL	2223'	FEL	S89.51.39W	9685.06'



4715 Innovation Drive
Fort Collins, CO 80525
www.LRA-Inc.com

PLANNED SPACING UNIT EXHIBIT
GREELEY DIRECTIONAL
HILLSIDE SPACING UNIT

LEGEND

- ALLOT CORNER
- BOTTOM HOLE
- COMPUTED ALLOT CORNER FROM MONUMENT ACCESSORIES
- COMPUTED FROM GLO RECORDS
- SECTION LINE
- SIXTEENTH LINE
- QUARTER SECTION LINE

DATE: 9/22/16
DRAWN BY: JMC
PATH/FILENAME: P:\engineering\0213001.01\DRAWINGS\EXHIBITS\Planned Spacing Unit\0213001.01\0213001.01.dwg

PROJECT - TASK NUMBER: 0213001.01
BOOK AND PAGE: MR01/MR02

SURFACE - LOCATION: NE/4,NE/4, SEC20, T5N, R65W