

**NOBLE ENERGY INC.**  
CENTENNIAL 32-33  
SWNE 33-5N-63W  
1880' FNL & 1950' FEL  
WELD COUNTY, CO  
Wattenberg  
**CURRENT WELLBORE SCHEMATIC**  
with PROPOSED P&A  
7/25/2016

API: 05-123-21239  
COGCC #

GL Elev: 4530'  
KB Elev: 4542'

Spud Date: 12/26/2002

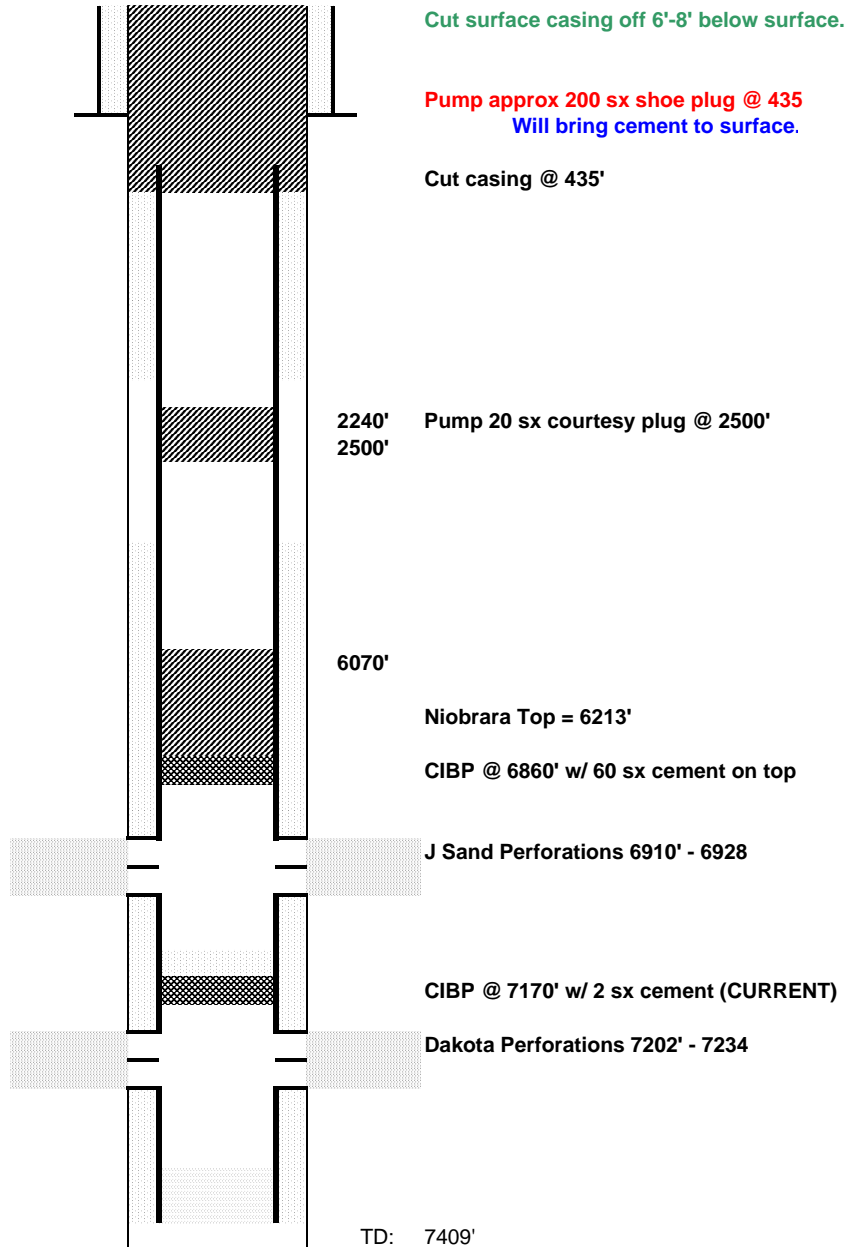
**Surface Casing :**  
8 5/8" 24#, J-55 @ 401'  
Cement: 340 sx  
TOC: Surface

FH Depth= 101'  
Deepest Water Well = 119'

**Remedial Cement (10/17/2014)**  
From 440' to 2030'

**TOC @ 5857'**

**Production Casing :**  
4 1/2" 11.6#, N-80 @ 7365  
Cement: 240 sx  
TD: 1/2/2003



Cut surface casing off 6'-8' below surface.

Pump approx 200 sx shoe plug @ 435  
Will bring cement to surface.

Cut casing @ 435'

2240' Pump 20 sx courtesy plug @ 2500'  
2500'

6070'  
Niobrara Top = 6213'  
CIBP @ 6860' w/ 60 sx cement on top

J Sand Perforations 6910' - 6928

CIBP @ 7170' w/ 2 sx cement (CURRENT)

Dakota Perforations 7202' - 7234

TD: 7409'