

WELL LOCATION DATA:
 LATITUDE: 40.39025°N
 LONGITUDE: 104.68251°W
 ELEVATION: 4672'
 PDOP: 1.6
 OPERATOR: C HOLMES
 SURFACE USE: INDUSTRIAL
 PROPOSED GROUND ELEVATION: 4673.0'

NEAREST CULTURAL ITEMS:
 PROPERTY LINE: 215'
 BUILDING: 1459'
 BUILDING UNIT: 602'
 HIGH OCCUPANCY BUILDING UNIT: 4417'
 DESIGNATED OUTSIDE ACTIVITY AREA: 5280'+
 PUBLIC ROAD: 309'
 ABOVE GROUND UTILITY: 401'
 RAILROAD: 416'

- NOTES:**
- DISTANCES ARE MEASURED PERPENDICULAR TO NEAREST SECTION LINE AND ARE SHOWN ON THE SAME SIDE OF THE SECTION LINE WHERE THE WELL IS LOCATED.
 - THIS MAP DOES NOT REPRESENT A MONUMENTED BOUNDARY SURVEY. SIXTEENTH CORNER LOCATIONS ARE COMPUTED, UNLESS OTHERWISE NOTED.
 - BOTTOM HOLE LOCATIONS AND HORIZONTAL COMPLETION ZONE PROVIDED BY OTHERS.

BASIS OF BEARING:
 THE NORTH LINE OF THE NORTHEAST QUARTER OF SECTION 20-T5N-R65W BEARS N89°44'34"E BETWEEN THE NORTH QUARTER CORNER OF SECTION 20 MONUMENTED WITH 3 1/4" A.C. IN R.B STAMPED "PLS 36053" AND THE NORTHEAST CORNER OF SECTION 20 MONUMENTED WITH A 3 1/4" A.C. IN R.B STAMPED "LS 34990" BASED ON THE COLORADO NORTH 0501 STATE PLANE COORDINATE SYSTEM.

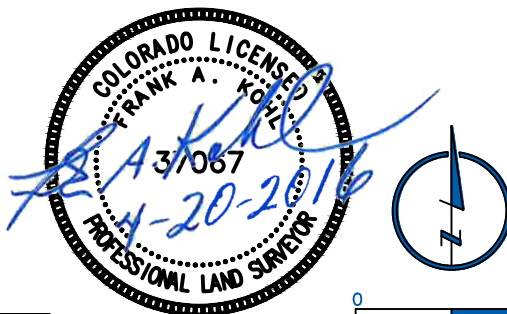
ELEVATIONS ARE BASED ON NAVD 88, AS OBSERVED FROM GPS OBSERVATIONS

LEGEND

- ALIQUOT CORNER A.C. ALUMINUM CAP
- ⊙ BOTTOM HOLE R.B. RANGE BOX
- PROPOSED WELL

LAND SURVEYOR'S CERTIFICATION

LAMP, RYNEARSON & ASSOCIATES, INC., OF FT. COLLINS, COLORADO HAS, IN ACCORDANCE WITH A REQUEST FROM DUSTIN DYK FROM EXTRACTION OIL AND GAS, DETERMINED THE SURFACE LOCATION OF THE WELL DESIGNATED AS GP-HILLSIDE 1-17-13 TO BE 586' FROM THE NORTH LINE AND 1305' FROM THE EAST LINE OF SECTION 20, TOWNSHIP 5 NORTH, RANGE 65 WEST OF THE 6TH P.M., WELD COUNTY, COLORADO.



0 1000
 SCALE: 1" = 1000'
 U.S. SURVEY FEET

FRANK A. KOHL
 COLORADO PLS 37067
 DATE OF SURVEY: 8/19/2010 (SECTION CONTROL)
 DATE OF SURVEY: 08/23/2013 (WELL LOCATION)



LAMP RYNEARSON
 & ASSOCIATES

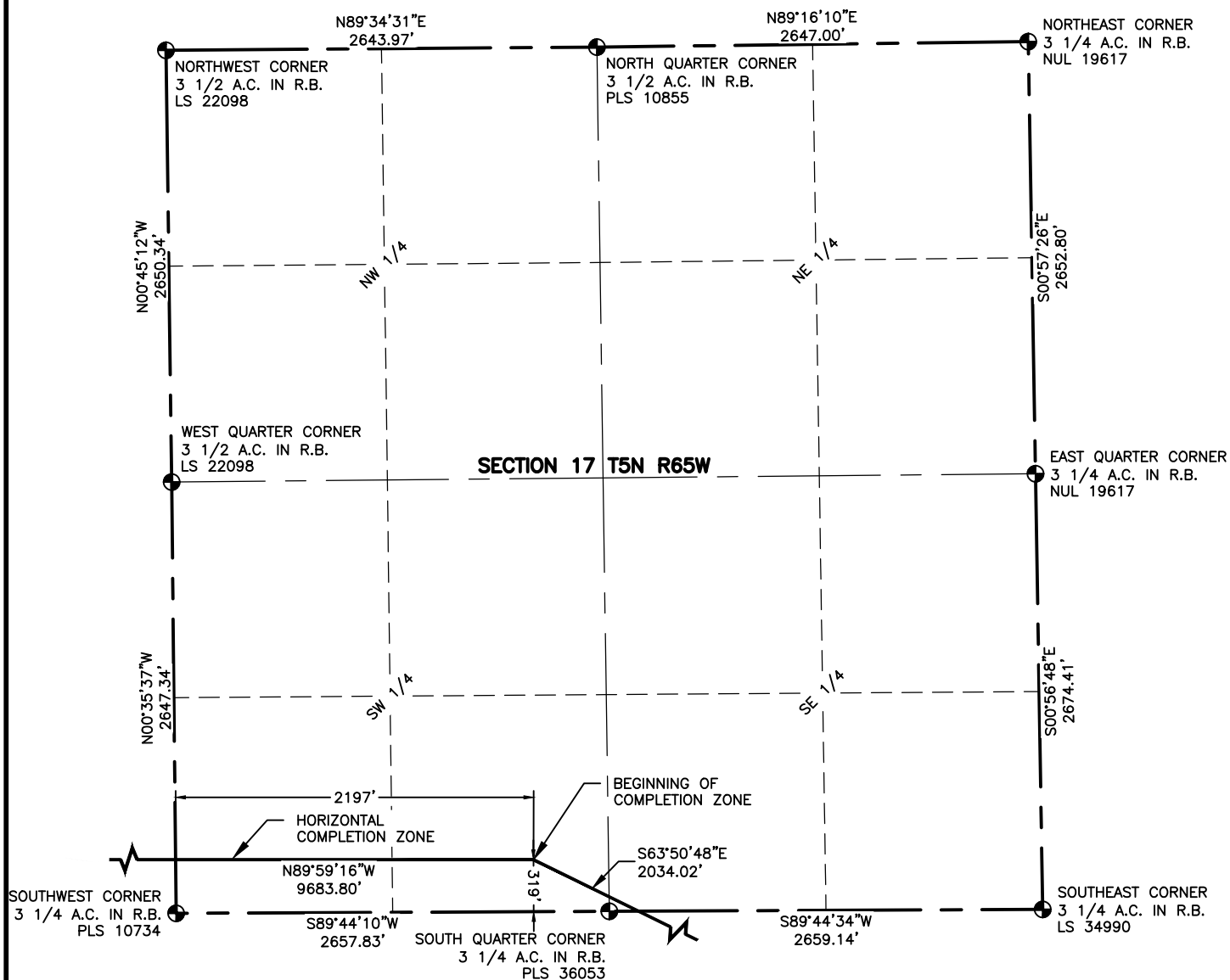
4715 Innovation Drive 970.226.0342 | P
 Fort Collins, CO 80525 970.226.0879 | F
 www.LRA-Inc.com

PROPOSED WELL LOCATION EXHIBIT
 GP-HILLSIDE 1-17-13
 1 OF 4

DRAWN BY JMC	DATE 9/22/16	COGCC ID 332837	PROJECT - TASK NUMBER 0213001.01	BOOK AND PAGE MR01/MR02
------------------------	------------------------	---------------------------	--	-----------------------------------

SURFACE - LOCATION
 NE/4, NE/4, SEC20, T5N, R65W

PATH\FILENAME p:_engineering\0213001.01\DRAWINGS\EXHIBITS\WELL PLATS\0213001-01EXWPOH1.dwg



NOTES:

DISTANCES ARE MEASURED PERPENDICULAR TO NEAREST SECTION LINE AND ARE SHOWN ON THE SAME SIDE OF THE SECTION LINE WHERE THE WELL IS LOCATED.

THIS MAP DOES NOT REPRESENT A MONUMENTED BOUNDARY SURVEY.

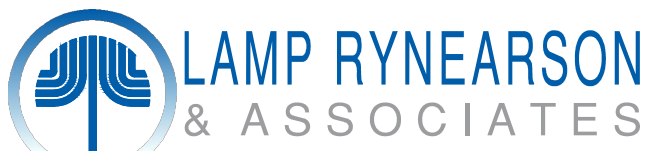
SIXTEENTH CORNER LOCATIONS ARE COMPUTED, UNLESS OTHERWISE NOTED.

LEGEND

- ALIQUOT CORNER
- ⊙ BOTTOM HOLE
- A.C. ALUMINUM CAP
- R.B. RANGE BOX



SCALE: 1"= 1000'
U.S. SURVEY FEET



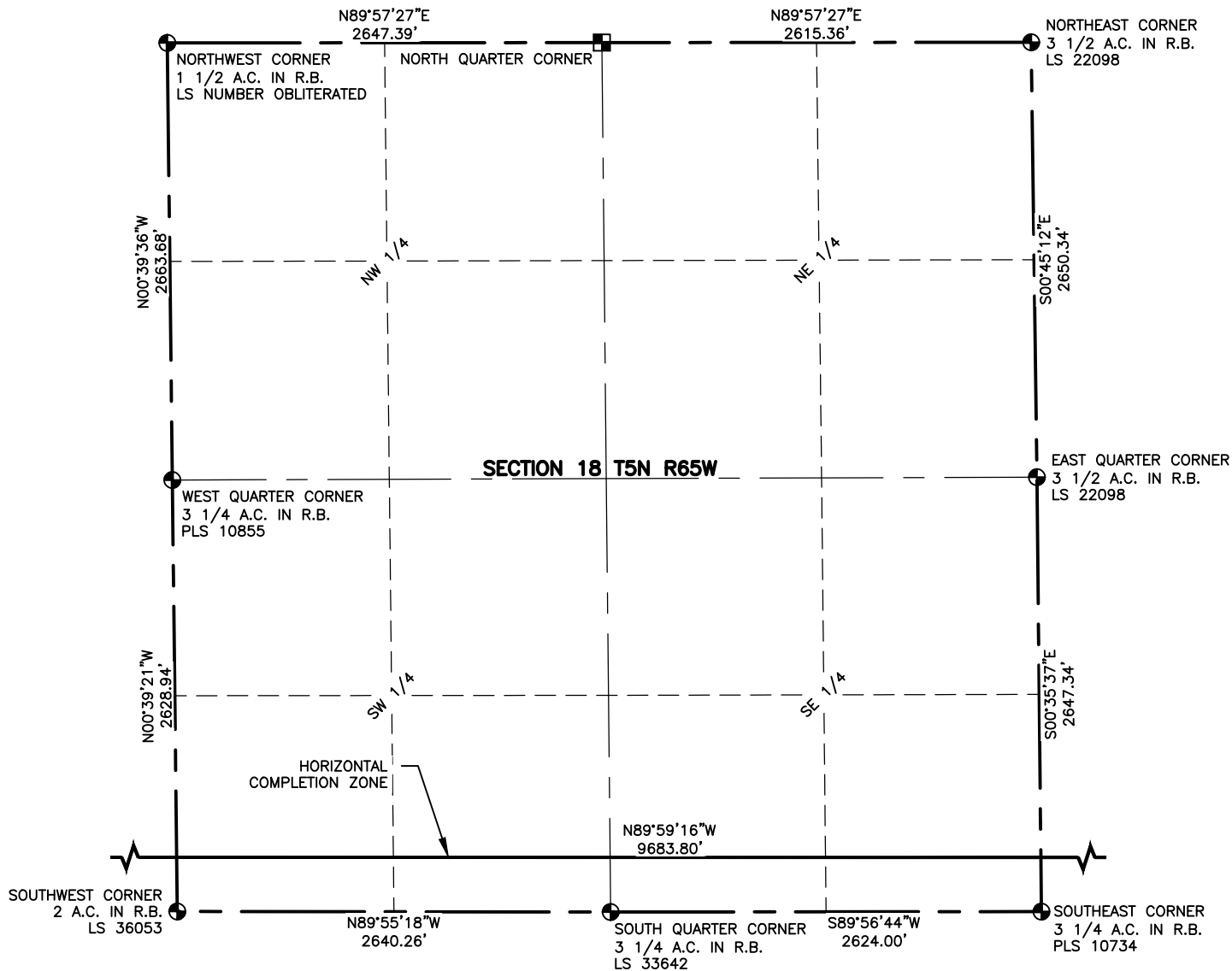
4715 Innovation Drive 970.226.0342 | P
Fort Collins, CO 80525 970.226.0879 | F
www.LRA-Inc.com

PROPOSED WELL LOCATION EXHIBIT
GP-HILLSIDE 1-17-13
2 OF 4

DRAWN BY	DATE	COGCC ID	PROJECT - TASK NUMBER	BOOK AND PAGE
JMC	9/22/16	332837	0213001.01	MR01/MR02

SURFACE - LOCATION
NE/4,NE/4, SEC20, T5N, R65W

PATH\FILENAME p:_engineering\0213001.01\DRAWINGS\EXHIBITS\WELL PLATS\0213001-01EXWP0H2.dwg



NOTES:

- DISTANCES ARE MEASURED PERPENDICULAR TO NEAREST SECTION LINE AND ARE SHOWN ON THE SAME SIDE OF THE SECTION LINE WHERE THE WELL IS LOCATED.
- THIS MAP DOES NOT REPRESENT A MONUMENTED BOUNDARY SURVEY.
- SIXTEENTH CORNER LOCATIONS ARE COMPUTED, UNLESS OTHERWISE NOTED.

LEGEND

- ALIQUOT CORNER
- BOTTOM HOLE
- COMPUTED ALIQUOT CORNER FROM GLO RECORDS
- A.C. ALUMINUM CAP
- R.B. RANGE BOX



0 1000
SCALE: 1"= 1000'
U.S. SURVEY FEET



LAMP RYNEARSON
& ASSOCIATES

4715 Innovation Drive 970.226.0342 | P
Fort Collins, CO 80525 970.226.0879 | F
www.LRA-Inc.com

PROPOSED WELL LOCATION EXHIBIT
GP-HILLSIDE 1-17-13
3 OF 4

DRAWN BY
JMC
PATH\FILENAME

DATE
9/22/16

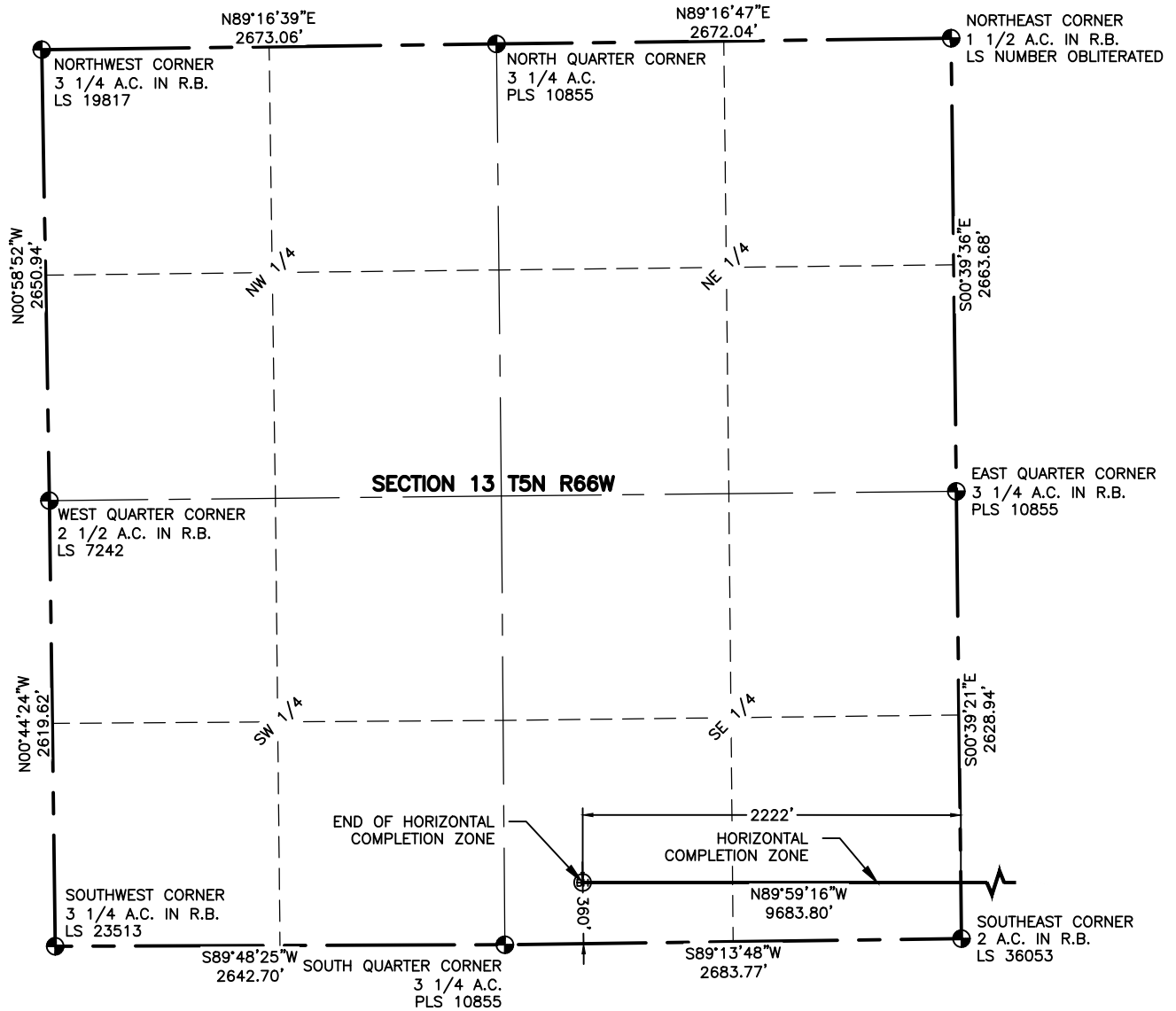
COGCC ID
332837

PROJECT - TASK NUMBER
0213001.01

BOOK AND PAGE
MR01/MR02

SURFACE - LOCATION
NE/4, NE/4, SEC20, T5N, R65W

p:_engineering\0213001.01\DRAWINGS\EXHIBITS\WELL PLATS\0213001-01EXWP0H3.dwg

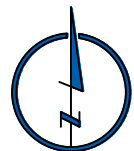


NOTES:

- DISTANCES ARE MEASURED PERPENDICULAR TO NEAREST SECTION LINE AND ARE SHOWN ON THE SAME SIDE OF THE SECTION LINE WHERE THE WELL IS LOCATED.
- THIS MAP DOES NOT REPRESENT A MONUMENTED BOUNDARY SURVEY. SIXTEENTH CORNER LOCATIONS ARE COMPUTED, UNLESS OTHERWISE NOTED.
- BOTTOM HOLE LOCATIONS AND HORIZONTAL COMPLETION ZONE PROVIDED BY OTHERS.

LEGEND

- ALIQUOT CORNER
- BOTTOM HOLE
- A.C. ALUMINUM CAP
- R.B. RANGE BOX



0 1000

SCALE: 1"= 1000'
U.S. SURVEY FEET



LAMP RYNEARSON
& ASSOCIATES

4715 Innovation Drive 970.226.0342 | P
Fort Collins, CO 80525 970.226.0879 | F
www.LRA-Inc.com

PROPOSED WELL LOCATION EXHIBIT
GP-HILLSIDE 1-17-13
4 OF 4

DRAWN BY
JMC
PATH\FILENAME

DATE
9/22/16

COGCC ID
332837

PROJECT - TASK NUMBER
0213001.01

BOOK AND PAGE
MR01/MR02

SURFACE - LOCATION
NE/4,NE/4, SEC20, T5N, R65W

p:_engineering\0213001.01\DRAWINGS\EXHIBITS\WELL PLATS\0213001-01EXWP0H4.dwg