

1801 Broadway  
Suite 500  
Denver, Colorado 80202



Allison Linz  
Regulatory Technician  
Tel: 303.398.0355  
E-mail:  
regulatorypermitting@gwogco.com

June 7, 2016

Colorado Oil and Gas Conservation Commission  
1120 Lincoln Street, Suite 801  
Denver, Colorado 80203

RE: **Proposed Wellbore Spacing Unit**  
Marcus LD 11-369HN  
Niobrara New Drill

SESE Section 34  
Township 1N, Range 67W, 6th P.M.  
Weld County, Colorado

Dear Director:

Great Western Operating Company, LLC is planning to drill the above captioned well in accordance with the provisions of COGCC Rule 318A.e.

Great Western proposed wellbore spacing unit consists of:

- **1S-67W-Sec 11:W2E2,E2W2**
- **1S-67W-Sec 2: W2E2,E2W2**
- **640 Acres**

The 30 day notification time period has passed and we have not received any objections to such well locations or proposed spacing unit, therefore Great Western hereby requests the Director to approve the above mentioned well. Great Western Operating Company, LLC respectfully requests that the COGCC review the enclosed map illustrating the proposed wellbore spacing unit.

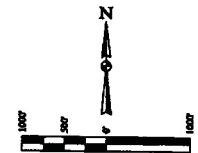
Respectfully,

*Allison Linz*

Allison Linz  
Regulatory Technician  
Great Western Operating Company, LLC

**LEGEND:**

- NO SYMBOL
- - PROPOSED WELLHEAD.
- ◇ - ENTRY POINT.
- - TARGET BOTTOM HOLE.
- ▲ - SECTION CORNERS LOCATED. (MAG 83)
- △ - SECTION CORNERS RE-ESTABLISHED.  
(Not Set on Ground.) (MAG 83)

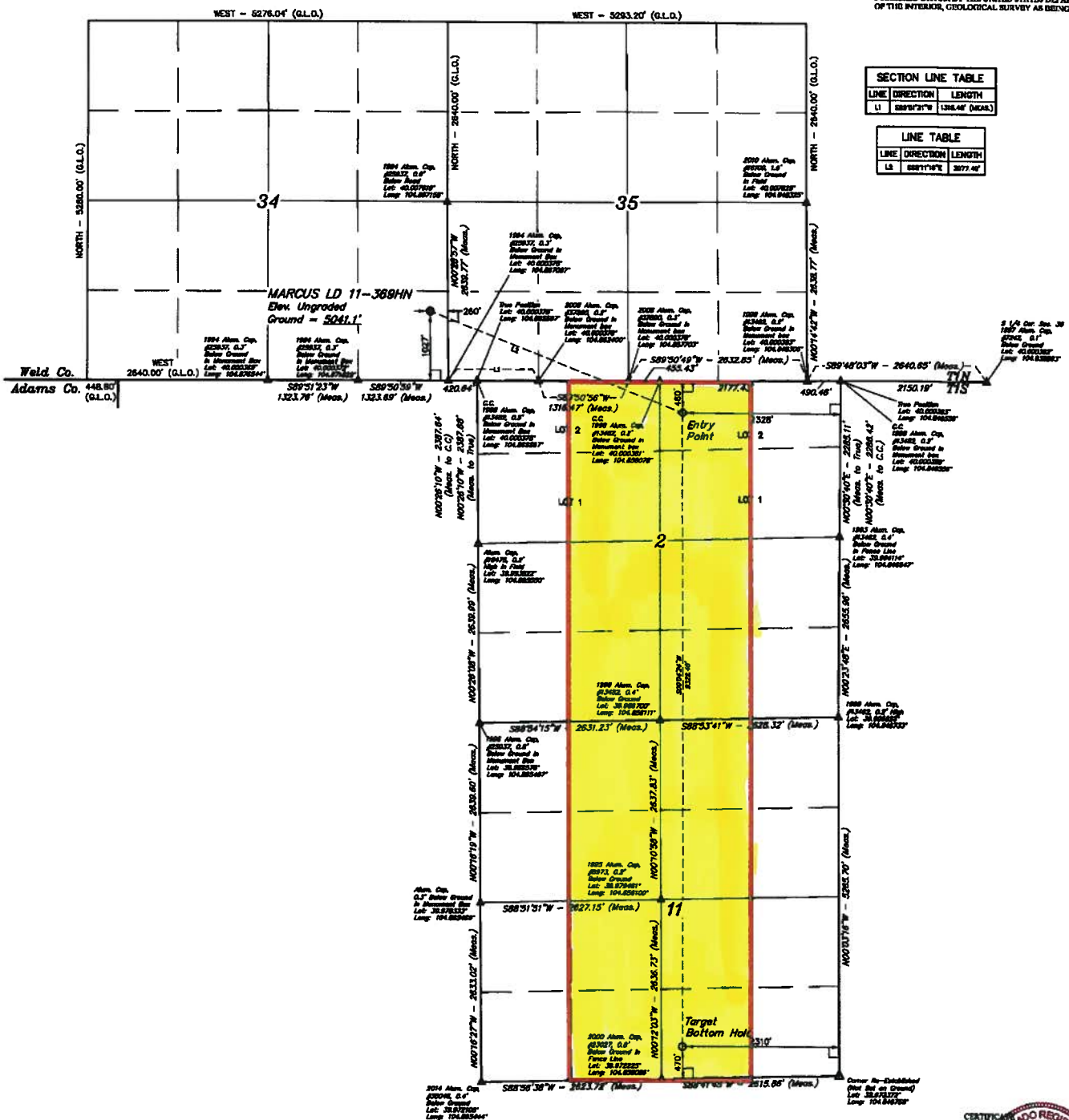


**BASIS OF HEARINGS**  
BASIS OF HEARINGS IS A U.P.A. OBSERVATION

BENCHMARK JR 53 5026 LOCATED IN THE SW 1/4 SE 1/4  
OF SECTION 18, T1N, R6W, 6th P.M., TAKEN FROM 1988  
PUBLISHED DATUM BY THE UNITED STATES DEPARTMENT  
OF THE INTERIOR, GEOLOGICAL SURVEY AS BEING 5026 FEET.

SECTION LINE TABLE		
LINE	DIRECTION	LENGTH
L1	S89°51'21"W	1,326.46' (MKAS)

LINE TABLE		
LINE	DIRECTION	LENGTH
L2	S89°11'18"E	3077.40'

[illegible]

REV: 1    04-19-16    C.C. (NAME, ET & GIL CHANLEY)

**GREAT WESTERN OPERATING COMPANY**

MARCUS LD 11-369HN  
SE 1/4 SE 1/4, SECTION 34, T1N, R67W, 6th P.M.  
WELD COUNTY, COLORADO

FDOP-1.2



**URLS, LLC**  
Corporate Office • 25 South 200 East  
Vernal, UT 84078 • (435) 789-1017

MAN 51 (MANGROVE LOCATION)	MAN 52 (MANGROVE LOCATION)	MAN 53 (MANGROVE LOCATION)
LATITUDE = 39.29472° (10.97553)	LATITUDE = 39.29565° (10.99617)	LATITUDE = 40.00113° (10.83194)
LONGITUDE = 104.91317° (10.45996)	LONGITUDE = 104.91735° (10.45953)	LONGITUDE = 104.92294° (10.46255)
MAN 57 (MANGROVE LOCATION)	MAN 58 (MANGROVE LOCATION)	MAN 59 (MANGROVE LOCATION)
LATITUDE = 39.29544° (10.97550)	LATITUDE = 39.29540° (10.99613)	LATITUDE = 40.00113° (10.83191)
LONGITUDE = 104.91160° (10.45967)	LONGITUDE = 104.91515° (10.45957)	LONGITUDE = 104.92030° (10.46257)

### WELL LOCATION PLAN