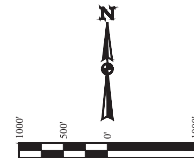


LEGEND:  
— 90° SYMBOL  
● PROPOSED WELLHEAD  
○ ENTRY POINT  
○ TARGET BOTTOM HOLE  
▲ SECTION CORNERS LOCATED. (NAD 83)  
△ SECTION CORNERS RE-ESTABLISHED.  
(Not Set on Ground.) (NAD 83)

T1N, R67W, 6th P.M.

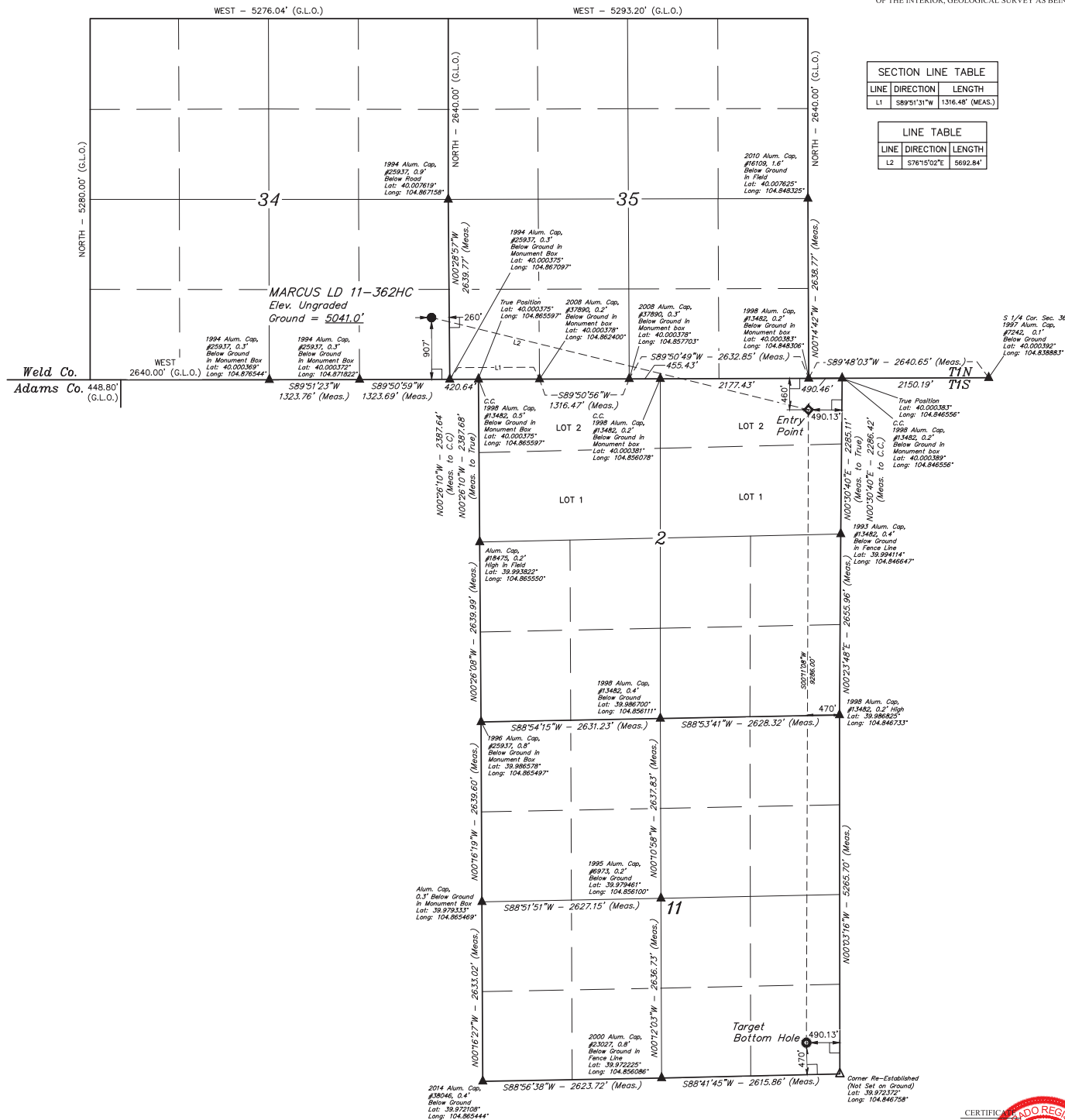


BASIS OF BEARINGS  
BASIS OF ELEVATION

BENCHMARK JR 53 5026 LOCATED IN THE SW 1/4 SE 1/4  
OF SECTION 18, T1N, R68W, 6th P.M., TAKEN FROM 1988  
PUBLISHED DATUM BY THE UNITED STATES DEPARTMENT  
OF THE INTERIOR, GEOLOGICAL SURVEY AS BEING 5028 FEET.

SECTION LINE TABLE		
LINE	DIRECTION	LENGTH
L1	S89°51'31"W	1316.48' (MEAS.)

LINE TABLE		
LINE	DIRECTION	LENGTH
L2	S76°15'02"E	5692.84'



CERTIFICATE OF REGISTRATION  
THIS IS TO CERTIFY THAT THE ABOVE NAMED SURVEYOR HAS BEEN  
NOTES OF ACTUAL SURVEYS MADE BY HIMSELF OR UNDER HIS SUPERVISION  
AND THAT THE SAME ARE TRUE AND CORRECT TO THE BEST OF HIS KNOWLEDGE AND BELIEF.  
REGISTERED LAND SURVEYOR  
RENEWAL NO. 28261  
STATE OF COLORADO  
JANUARY 16, 2016

REV: 3 04-19-16 C.C. (NAME, EP & BHL CHANGE)  
GREAT WESTERN OPERATING COMPANY

MARCUS LD 11-362HC  
SE 1/4 SE 1/4, SECTION 34, T1N, R67W, 6th P.M.  
WELD COUNTY, COLORADO

UELS, LLC  
Corporate Office \* 85 South 200 East  
Vernal, UT 84078 \* (435) 789-1017



SURVEYED BY: JARED CHRISTOPHER, J.C. DATE: 11-20-14  
DRAWN BY: J.W. DATE DRAWN: 12-01-14  
SCALE: 1" = 1000'

WELL LOCATION PLAT

NAD 83 (TARGET BOTTOM HOLE)	NAD 83 (ENTRY POINT)	NAD 83 (SURFACE LOCATION)
LATITUDE = 39°58'25.09" (39.973636)	LATITUDE = 39°59'56.83" (39.999119)	LATITUDE = 40°00'10.32" (40.002867)
LONGITUDE = 104°50'54.61" (104.848503)	LONGITUDE = 104°50'53.71" (104.848253)	LONGITUDE = 104°52'04.97" (104.868047)
NAD 27 (TARGET BOTTOM HOLE)	NAD 27 (ENTRY POINT)	NAD 27 (SURFACE LOCATION)
LATITUDE = 39°58'25.15" (39.973633)	LATITUDE = 39°59'56.80" (39.999136)	LATITUDE = 40°00'10.37" (40.002881)
LONGITUDE = 104°50'52.71" (104.847975)	LONGITUDE = 104°50'51.80" (104.847722)	LONGITUDE = 104°52'03.06" (104.867317)