

1801 Broadway
Suite 500
Denver, Colorado 80202



Allison Linz
Regulatory Technician
Tel: 303.398.0355
E-mail:
regulatorypermitting@gwogco.com

June 7, 2016

Colorado Oil and Gas Conservation Commission
1120 Lincoln Street, Suite 801
Denver, Colorado 80203

RE: **Proposed Wellbore Spacing Unit**
Marcus LD 11-372HN
Niobrara New Drill

SESE Section 34
Township 1N, Range 67W, 6th P.M.
Weld County, Colorado

Dear Director:

Great Western Operating Company, LLC is planning to drill the above captioned well in accordance with the provisions of COGCC Rule 318A.e.

Great Western proposed wellbore spacing unit consists of:

- **1S-67W-Sec 11:W2E2,E2W2**
- **1S-67W-Sec 2: W2E2,E2W2**
- **640 Acres**

The 30 day notification time period has passed and we have not received any objections to such well locations or proposed spacing unit, therefore Great Western hereby requests the Director to approve the above mentioned well. Great Western Operating Company, LLC respectfully requests that the COGCC review the enclosed map illustrating the proposed wellbore spacing unit.

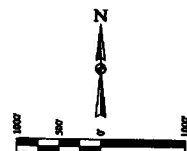
Respectfully,

Allison Linz

Allison Linz
Regulatory Technician
Great Western Operating Company, LLC

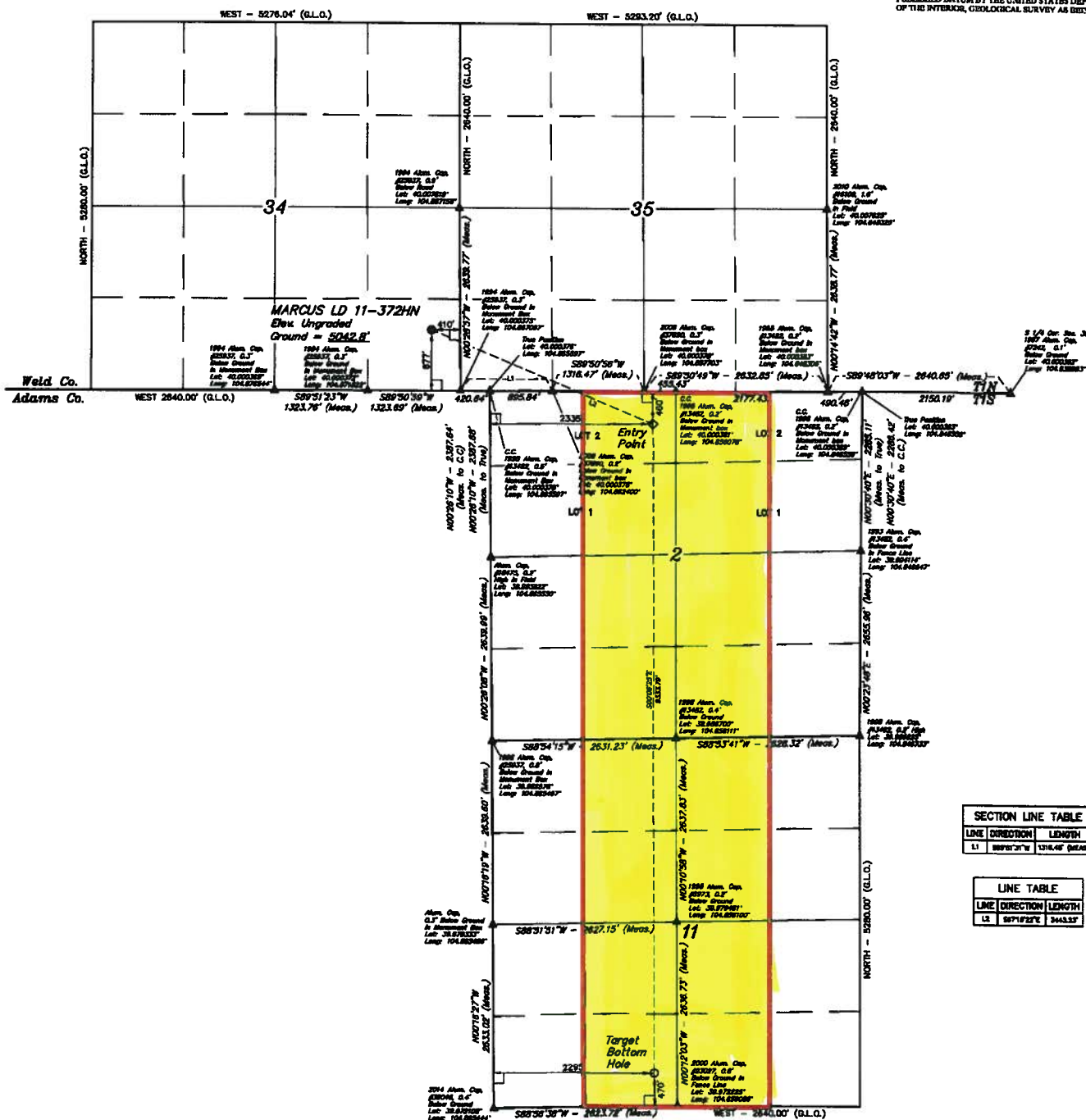
T1N, R67W, 6th P.M.

- LEGEND:**
- 80' DIAMETER
 - PROPOSED WELLHEAD
 - ENTRY POINT
 - TARGET BOTTOM HOLE
 - ▲ SECTION CORNERS LOCATED



BASE OF BEARINGS
BASE OF BEARINGS IS A G.P.S. OBSERVATION

BASE OF ELEVATION
BENCHMARK R. 55 5025 LOCATED IN THE SW 1/4 SE 1/4 OF SECTION 14, T1N, R67W, 6th P.M., TAKEN FROM 1988 PUBLISHED DATUM BY THE UNITED STATES DEPARTMENT OF THE INTERIOR, GEOLOGICAL SURVEY AS BEING 5025 FEET.



SECTION LINE TABLE	
LINE DIRECTION	LENGTH
L1 88°10'31"W	1316.48' (MEAS.)

LINE TABLE	
LINE DIRECTION	LENGTH
L2 89°17'22"E	3443.33'

THIS IS TO CERTIFY THAT THE SURVEY WAS MADE IN ACCORDANCE WITH THE RULES AND REGULATIONS OF THE STATE OF UTAH, AND THAT THE SAME ARE TRUE AND CORRECT TO THE BEST OF MY KNOWLEDGE AND BELIEF.



GREAT WESTERN OIL & GAS COMPANY
MARCUS LD 11-372HN
SE 1/4 SE 1/4, SECTION 34, T1N, R67W, 6th P.M.
WELD COUNTY, COLORADO

FDOP - 13



UTKL, LLC
Corporate Office: 425 South 200 East
Vernal, UT 84078 • (435) 788-1027

SURVEYED BY: JAMES C. HARRIS, J.C.		DATE: 11-30-14	
DRAWN BY: J.W.		DATE DRAWN: 12-01-14	
SCALE: 1" = 100'		REVISOR: 12-15-14	
WELL LOCATION PLAT			