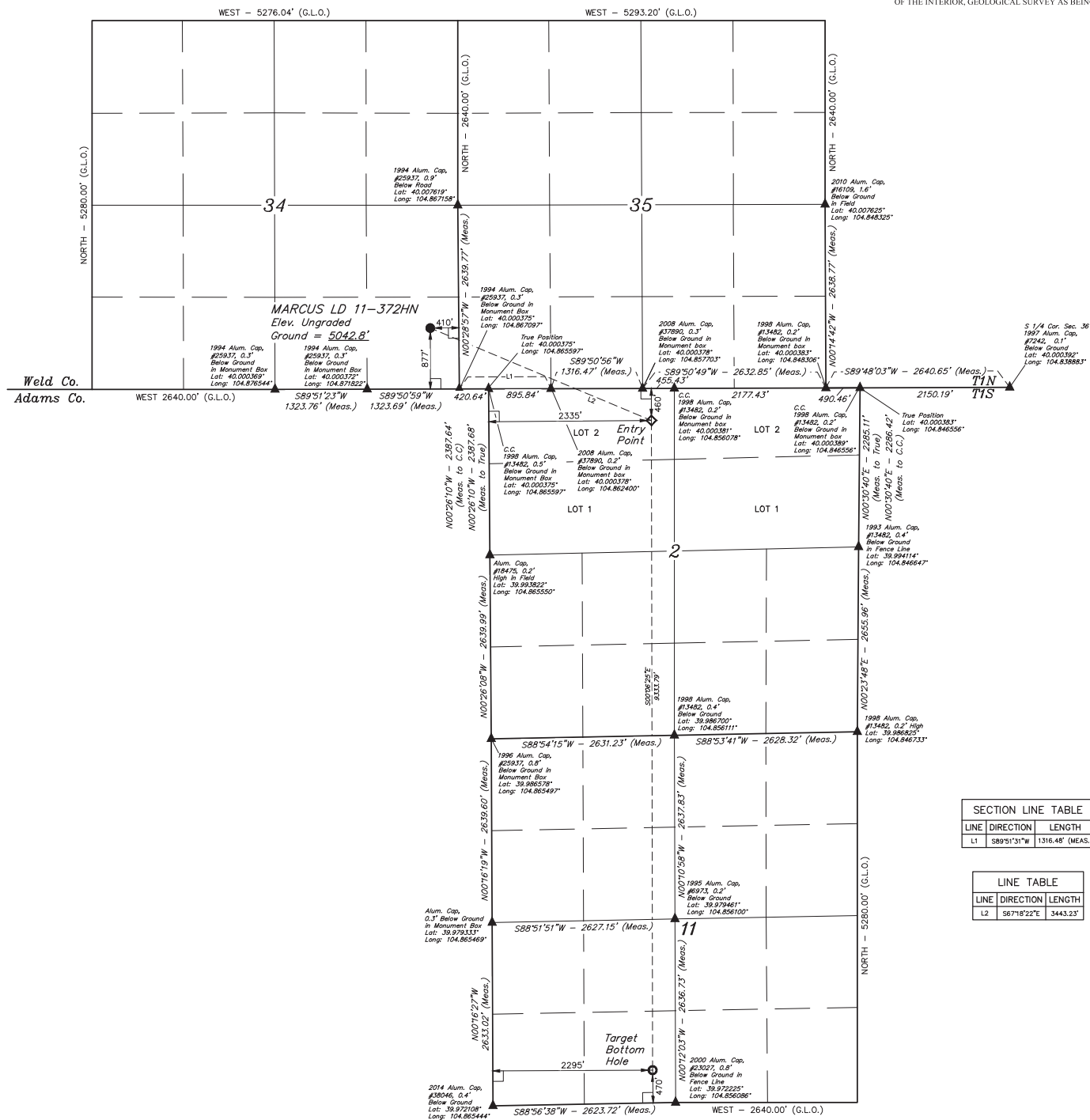


 = 90° SYMBOL  
 = PROPOSED WELLHEAD.  
 = ENTRY POINT.  
 = TARGET BOTTOM HOLE.  
 = SECTION CORNERS  
 LOCATED.

## BASIS OF BEARINGS

BENCHMARK JR 53 5026 LOCATED IN THE SW 1/4 SE 1/4  
OF SECTION 18, T1N, R68W, 6th P.M., TAKEN FROM 1988  
PUBLISHED DATUM BY THE UNITED STATES DEPARTMENT  
OF THE INTERIOR, GEOLOGICAL SURVEY AS BEING 5028 FEET.



SECTION LINE TABLE		
LINE	DIRECTION	LENGTH
L1	S89°51'31"W	1316.48' (MEAS.

LINE TABLE		
LINE	DIRECTION	LENGTH
L2	S67°18'22"E	3443.23

**CERTIFICATE**

THIS IS TO CERTIFY THAT THE ABOVE PLAN WAS PREPARED FROM THE  
NOTES OF ACTUAL SURVEYS MADE BY ME OR UNDER MY SUPERVISION  
AND THAT THE SAME ARE TRUE AND CORRECT TO THE BEST OF MY  
KNOWLEDGE AND BELIEF.

**GREAT WESTERN OIL & GAS COMPANY**  
MARCUS LD 11-372HN  
SE 1/4 SE 1/4, SECTION 34, T1N, R67W, 6th P.M.  
WELD COUNTY, COLORADO

**UELS, LLC**  
Corporate Office \* 85 South 200 East  
Vernal, UT 84078 \* (435) 789-1017

PDOP = 1.3

**UINTAH**

SURVEYED BY: JARED CHRISTOPHER, J.C.	DATE: 11-20-14
DRAWN BY: J.W.	DATE DRAWN: 12-01-14
SCALE: 1" = 1000'	REVISED: 12-15-14

**WELL LOCATION PLAT**

NAD 83 (TARGET BOTTOM HOLE)	NAD 83 (ENTRY POINT)	NAD 83 (SURFACE LOCATION)
LATITUDE = 39°58'24.60" (39.973500)	LATITUDE = 39°59'56.82" (39.999117)	LATITUDE = 40°00'10.07" (40.002781)
LONGITUDE = 104°51'26.15" (104.857264)	LONGITUDE = 104°51'26.12" (104.857256)	LONGITUDE = 104°52'06.39" (104.868581)
NAD 27 (TARGET BOTTOM HOLE)	NAD 27 (ENTRY POINT)	NAD 27 (SURFACE LOCATION)
LATITUDE = 39°58'24.66" (39.973517)	LATITUDE = 39°59'56.88" (39.999133)	LATITUDE = 40°00'10.07" (40.002797)
LONGITUDE = 104°51'24.24" (104.856733)	LONGITUDE = 104°51'24.21" (104.856725)	LONGITUDE = 104°52'04.98" (104.868050)