

1801 Broadway  
Suite 500  
Denver, Colorado 80202



Allison Linz  
Regulatory Technician  
Tel: 303.398.0355  
E-mail:  
regulatorypermitting@gwogco.com

June 7, 2016

Colorado Oil and Gas Conservation Commission  
1120 Lincoln Street, Suite 801  
Denver, Colorado 80203

RE: **Proposed Wellbore Spacing Unit**  
Marcus LD 11-371HN  
Niobrara New Drill

SESE Section 34  
Township 1N, Range 67W, 6th P.M.  
Weld County, Colorado

Dear Director:

Great Western Operating Company, LLC is planning to drill the above captioned well in accordance with the provisions of COGCC Rule 318A.e.

Great Western proposed wellbore spacing unit consists of:

- **1S-67W-Sec 11:W2E2,E2W2**
- **1S-67W-Sec 2: W2E2,E2W2**
- **640 Acres**

The 30 day notification time period has passed and we have not received any objections to such well locations or proposed spacing unit, therefore Great Western hereby requests the Director to approve the above mentioned well. Great Western Operating Company, LLC respectfully requests that the COGCC review the enclosed map illustrating the proposed wellbore spacing unit.

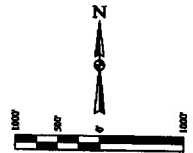
Respectfully,

*Allison Linz*

Allison Linz  
Regulatory Technician  
Great Western Operating Company, LLC

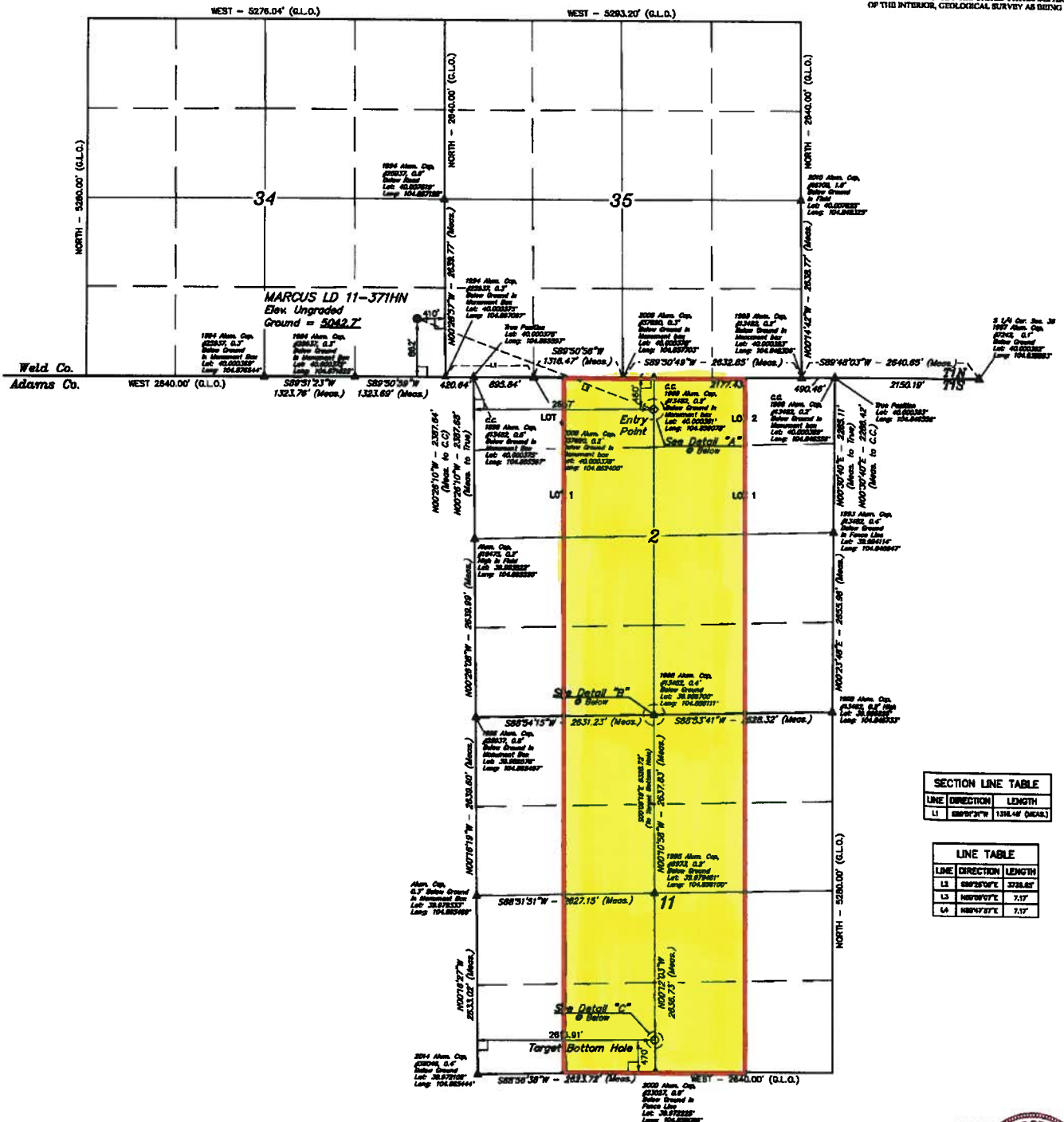
T1N, R67W, 6th P.M.

- LEGEND:**
- 8" SYMBOL
  - PROPOSED WELLHEAD
  - ENTRY POINT
  - TARGET BOTTOM HOLE
  - ▲ SECTION CORNERS LOCATED



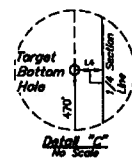
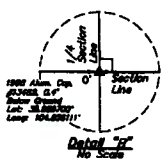
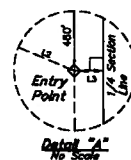
**BASE OF BEARING**  
BASE OF ELEVATION

BRANCH MARK JR. S. 5355 LOCATED IN THE SW 1/4 SEC 14 OF SECTION 18, T1N, R67W, 6th P.M., TAKEN FROM 1988 PUBLISHED DATUM BY THE UNITED STATES DEPARTMENT OF THE INTERIOR, GEOLOGICAL SURVEY AS BEING 5028 FEET.



SECTION LINE TABLE		
LINE	DIRECTION	LENGTH
L1	S89°12'30"W	138.44' (MEAS.)

LINE TABLE		
LINE	DIRECTION	LENGTH
L2	S89°25'07"E	3728.67'
L3	N89°10'07"E	7.17'
L4	N89°17'37"E	7.17'



THIS IS TO CERTIFY THAT THE ABOVE INFORMATION WAS OBTAINED FROM THE RECORDS OF THE LAND SURVEYOR OF THE STATE OF COLORADO, AND THAT THE SAME ARE TRUE AND CORRECT TO THE BEST OF HIS KNOWLEDGE AND BELIEF.

**GREAT WESTERN OIL & GAS COMPANY**  
MARCUS LD 11-371HN  
SE 1/4 SE 1/4, SECTION 14, T1N, R67W, 6th P.M.  
WELD COUNTY, COLORADO

**UNLS, LLC**  
Corporate Office • 85 South 280 East  
Vernal, UT 84078 • (435) 789-1017

**UNLS**  
Surveyed by: JABRO CHINTORRIS, J.C. DATE: 11-26-14  
DRAWN BY: J.W. DATE: 12-01-14  
SCALE: 1" = 1000' REVISION: 10-05-05

**WELL LOCATION PLAT**

POINT	POINT	POINT
POINT 1: 39°54'00" (39.900000)	POINT 2: 39°54'00" (39.900000)	POINT 3: 39°54'00" (39.900000)
POINT 4: 39°54'00" (39.900000)	POINT 5: 39°54'00" (39.900000)	POINT 6: 39°54'00" (39.900000)
POINT 7: 39°54'00" (39.900000)	POINT 8: 39°54'00" (39.900000)	POINT 9: 39°54'00" (39.900000)
POINT 10: 39°54'00" (39.900000)	POINT 11: 39°54'00" (39.900000)	POINT 12: 39°54'00" (39.900000)